

CHECK 548B/548T

BRONZE SPRING CHECK VALVE

RATING

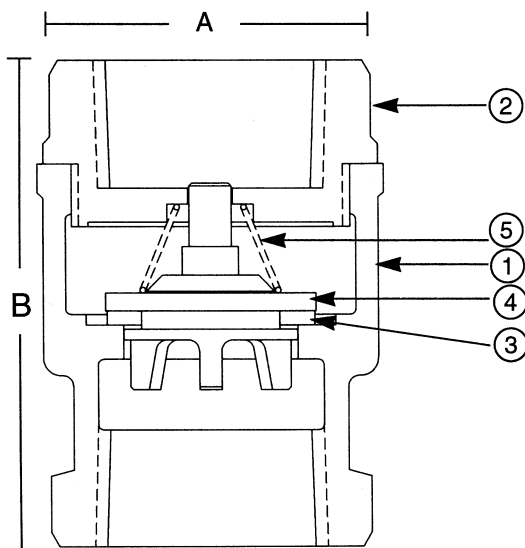
- 250 PSI NON-SHOCK COLD WATER, OIL OR GAS

FEATURES

- BRONZE BODY
- THREADED ENDS
- BRONZE SPRING
- BUNA DISC RING
- BRONZE DISC HOLDER
- 100% FACTORY TESTED
- SILENT CLOSING
(minimizes water hammer)

MATERIAL SPECIFICATION

NO.	PART	MATERIAL	SPECIFICATION
1	Body	Cast Bronze	ASTM B584, C84400
2	Tail Piece	Cast Bronze	ASTM B584, C84400
3	Disc	Buna/TFE	
4	Disc Holder	Cast Bronze	ASTM B584, C85700
5	Spring	Bronze	ASTM B103, C52100



DIMENSIONS - INCHES / MILLIMETERS

Units	Size	A	B	Weight
Inches	3/8	1 7/32	1 31/32	
MM	9.53	30.96	50.01	
Inches	1/2	1 7/32	2 3/32	.44
MM	12.70	30.96	53.19	
Inches	3/4	1 1/2	2 5/16	.57
MM	19.05	38.10	58.75	
Inches	1	1 29/32	2 21/32	.89
MM	25.40	48.41	67.46	
Inches	1 1/4	2 5/32	3 3/32	1.28
MM	31.75	54.76	78.59	
Inches	1 1/2	2 19/32	3 5/16	1.72
MM	38.10	65.89	84.15	
Inches	2	3 1/8	3 25/32	2.58
MM	50.80	79.38	96.04	

INNOVATION IN EVERY VALVE



MILWAUKEE VALVE

The information presented on this sheet is correct at the time of publication. Milwaukee Valve reserves the right to change design, and/or material specifications without notice. For the most current information access www.milwaukeevalve.com

www.milwaukeevalve.com