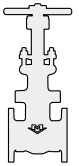


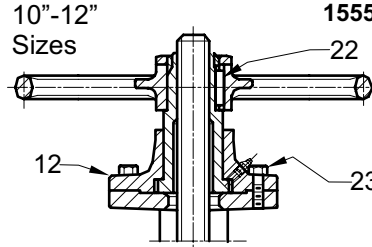
GATE CLASS 150

2" - 12"

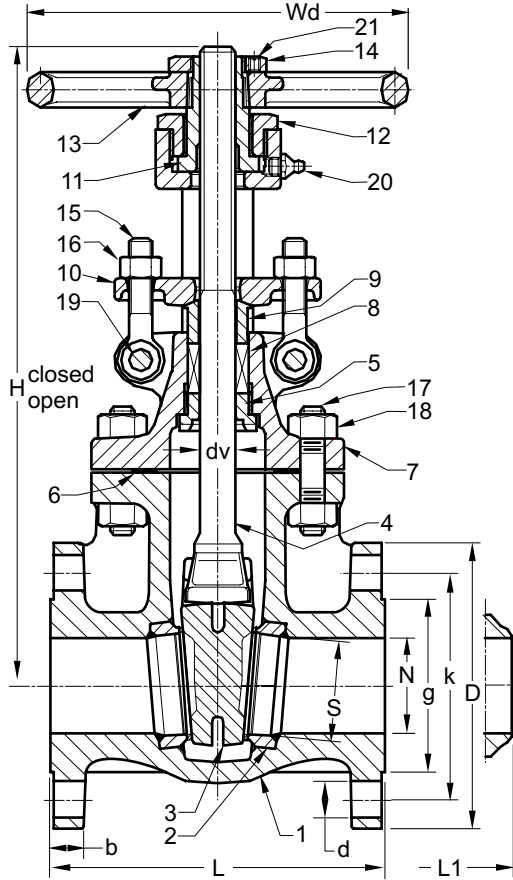


Specifications	
Design	API 600, ASME B 16.34
P-T Rating	ASME B 16.34
Face to Face	ASME B 16.10
Connection	ASME B 16.5, 16.25
Test & Inspection	API 598, RP 591

1550CB2 FLANGED ENDS
1555CB2 BUTT WELD ENDS



2"-8" Sizes



Key	Part	ASTM Material Specification
Unless otherwise specified		
1	Body	A 216 Gr WCB
2	Seat Ring / Facing	A 105 / Co-Cr-W Face A 216 Gr WCB / Co-Cr-W Face
3	Wedge	2"- 6" A 182 Gr F6a 8"- 12" A 216 Gr WCB/13% Cr Face
4	Stem	A 182 Gr F6a
5	Backseat Bushing	A 276 Type 410
6	Gasket	Flex Graphite w/ SS Core
7	Bonnet	A 216 Gr WCB
8	Packing	Graphoil w/ Braided Rings
9	Gland	A 182 Gr F6a
10	Gland Flange	A 105
11	Yoke Nut	A 439 Type D2
12	Yoke Bushing 2"- 8" Yoke Cap 10"-12"	A 536 Gr 65-45-12 A 216 Gr WCB
13	Handwheel	A 47 Gr 32510
14	Handwheel Nut	A 47 Gr 32510
15	Gland Eyebolt	Carbon Steel
16	Gland Eyebolt Nut	A 307 Gr B
17	Body Bonnet Stud	A 193 Gr B7
18	Body Bonnet Stud Nut	A 194 Gr 2H
19	Gland Eyebolt Pin	Carbon Steel
20	Grease Fitting	Carbon Steel
21	Set Screw	Carbon Steel
22	Key	Carbon Steel
23	Bolt	Carbon Steel

Size	Port		Line Flange				Height			Line Flange Bolts		Turns to Open	Hand-wheel Wd	Weight Approx.			
	Dia.	Dia.	Dia.	Thickness (min.)	Bolt Circle Dia.	Hole Dia.	Raised Face Dia.	Face to Face	BW	Open	Closed				Stem	Quantity	Size
	N	S	D	b	k	d	g	L	L1	H	H				dv	INCHES (metric)	INCHES (mm)
2	2.00	2.11	6.00	0.62	4.75	0.75	3.62	7.00	8.50	16.29	13.58	0.75	4	5/8	11.0	8.00	46
	50.8	53.6	152.4	15.7	120.7	19.1	91.9	177.8	215.9	413.8	344.9	19.1	M16	M16	203.2	203.2	21
2-1/2	2.50	2.58	7.00	0.69	5.50	0.75	4.12	7.50	9.50	17.32	14.17	0.75	4	5/8	12.6	8.00	62
	63.5	65.5	177.8	17.5	139.7	19.1	104.6	190.5	241.3	439.9	359.9	19.1	M16	M16	203.2	203.2	28
3	3.00	3.07	7.50	0.75	6.00	0.75	5.00	8.00	11.13	19.68	16.14	0.88	4	5/8	12.4	9.00	77
	76.2	78.0	190.5	19.1	152.4	19.1	127.0	203.2	282.7	499.9	410.0	22.2	M16	M16	228.6	228.6	35
4	4.00	4.09	9.00	0.94	7.50	0.75	6.19	9.00	12.00	24.76	19.84	1.00	8	5/8	14.8	10.00	117
	101.6	103.9	228.6	23.9	190.5	19.1	157.2	228.6	304.8	628.9	503.9	25.4	M16	M16	254.0	254.0	53
5	5.00	5.10	10.00	0.94	8.46	0.87	7.31	10.00	15.00	28.38	22.64	1.13	8	3/4	22.2	14.00	143
	127.0	129.5	254.0	23.9	215.0	22.0	185.7	254.0	381.0	720.8	575.0	28.6	M20	M20	355.6	355.6	65
6	6.00	6.15	11.00	1.00	9.50	0.88	8.50	10.50	15.88	32.80	25.90	1.25	8	3/4	13.6	10.50	207
	152.4	156.2	279.4	25.4	241.3	22.4	215.9	266.7	403.4	833.1	657.9	31.8	M20	M20	266.7	266.7	94
8	8.00	8.15	13.50	1.12	11.75	0.88	10.62	11.50	16.50	40.74	32.44	1.38	8	3/4	16.5	16.00	348
	203.2	207.0	342.9	28.4	298.5	22.4	269.7	292.1	419.1	1034.8	824.0	34.9	M20	M20	406.4	406.4	158
10	10.00	10.20	16.00	1.19	14.25	1.00	12.75	13.00	18.00	50.11	38.78	1.50	12	7/8	22.8	18.00	524
	254.0	259.1	406.4	30.2	362.0	25.4	323.9	330.2	457.2	1272.8	985.0	38.1	M22	M22	457.2	457.2	238
12	12.00	12.24	19.00	1.25	17.00	1.00	15.00	14.00	19.75	58.66	45.31	1.63	12	7/8	26.8	20.00	761
	304.8	310.9	482.6	31.8	431.8	25.4	381.0	355.6	501.7	1490.0	1150.9	41.3	M22	M22	508.0	508.0	346

The information presented on this sheet is correct at the time of publication. Milwaukee Valve reserves the right to change design, and/or material specifications without notice. For the most current information access www.milwaukeevalve.com.



MILWAUKEE VALVE