

# CHECK 1548T

## BRASS SPRING CHECK VALVE

### RATING

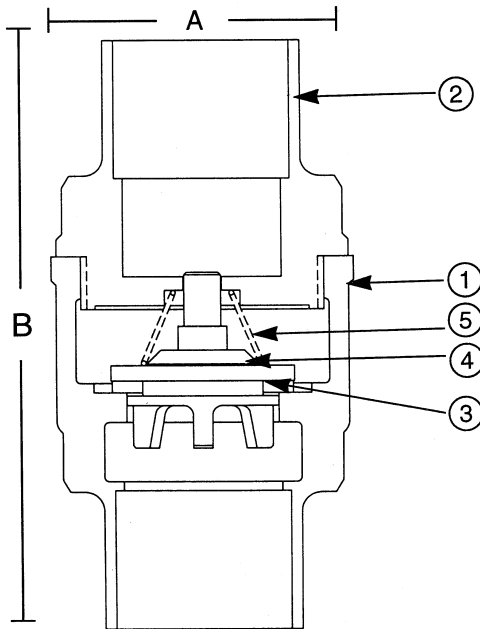
- 250 PSI NON-SHOCK COLD WATER, OIL OR GAS

### FEATURES

- BRONZE BODY
- SOLDERED ENDS
- BRONZE SPRING
- BUNA DISC RING
- BRONZE DISC HOLDER
- 100% FACTORY TESTED
- SILENT CLOSING (minimizes water hammer)

### MATERIAL SPECIFICATION

NO.	PART	MATERIAL	SPECIFICATION
1	Body	Cast Bronze	ASTM B 584, C84400
2	Tail Piece	Cast Bronze	ASTM B 584, C84400
3	Disc	TFE	
4	Disc Holder	Cast Bronze	ASTM B 584, C85700
5	Spring	Bronze	ASTM B 103, C52100



### DIMENSIONS - INCHES / MILLIMETERS

Units	Size	A	B	C	Weight
Inches	3/8	1 7/32	2 5/32	1 31/32	
MM	9.53	30.96	54.76	50.01	
Inches	1/2	1 7/32	2 13/32	2 3/32	.45
MM	12.70	30.96	61.11	53.19	
Inches	3/4	1 1/2	3 13/16	2 5/16	.62
MM	19.05	38.10	96.85	58.75	
Inches	1	1 29/32	3 17/32	2 21/32	.97
MM	25.40	48.41	89.69	67.46	
Inches	1 1/4	2 5/32	4 7/8	3 3/32	1.42
MM	31.75	54.76	123.83	78.59	
Inches	1 1/2	2 19/32	4 7/32	3 5/16	1.84
MM	38.10	65.89	107.16	84.15	
Inches	2	3 1/8	5 3/32	3 25/32	2.75
MM	50.80	79.38	129.39	96.04	

**INNOVATION** IN EVERY VALVE



**MILWAUKEE VALVE**

The information presented on this sheet is correct at the time of publication. Milwaukee Valve reserves the right to change design, and/or material specifications without notice. For the most current information access [www.milwaukeevalve.com](http://www.milwaukeevalve.com)

[www.milwaukeevalve.com](http://www.milwaukeevalve.com)