

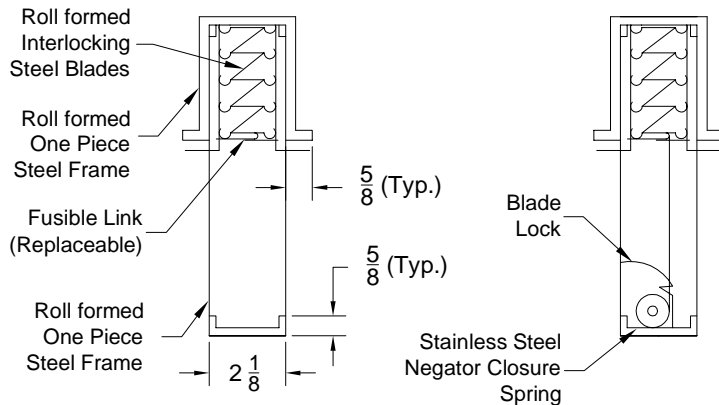
Tag:
Series : FD

METAL*LAIRE®
Submittal No: FD-B

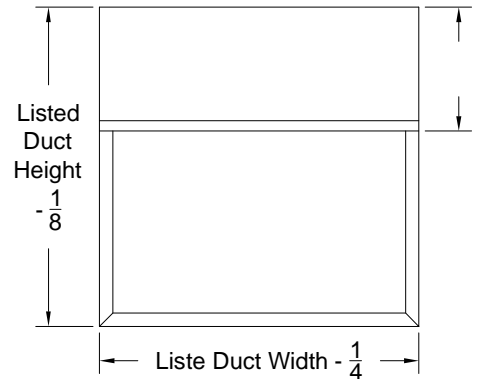
**Fire Dampers - Type B
Galvanized Steel**

Options: FD-11-BV Thin Line 2" Frame - Blades out of Air Stream - Vertical Application
FD-11-BH Thin Line 2" Frame - Blades out of Air Stream - Horizontal Application
FD-12-BV Standard 4 1/4" Frame - Blades out of Air Stream - Vertical Application
FD-12-BH Standard 4 1/4" Frame - Blades out of Air Stream - Horizontal Application

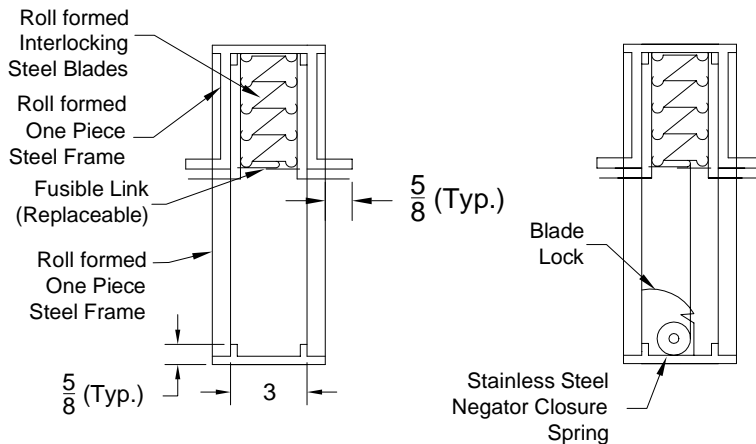
Model: FD-11-B (Horizontal or Vertical Application)



Face View (Both Models)



Model: FD-12-B (Horizontal or Vertical Application)



Models: FD-11-BV and FD-11-BH

* Add to the listed Duct Height for Damper Height

Up to and including 7" Duct Height + 2"
Over 7" through 12" Duct Height + 3"
Over 12" through 17" Duct Height + 4"
Over 17" through 24" Duct Height + 5"
Over 24" through 29" Duct Height + 6"

Models: FD-12 BV and FD-12-BH

* Add to the listed Duct Height for Damper Height

Up to and including 5" Duct Height + 1"
Over 5" through 16" Duct Height + 2"
Over 16" through 23" Duct Height + 3"
Over 23" through 34" Duct Height + 4"
Over 34" through 45" Duct Height + 5"
Over 45" through 53" Duct Height + 6"

**Note: Supplied Only On Units With Duct Height
Of 11 Inches And Less**

Models FD 11 BV FD 11 BH	Single Unit Size	Multiple Section Size
	Duct Width x Height	Duct Width x Height
Min. Section	4 x 4	N/A
Max. Section	41 x 29	N/A
Max. Duct Size	41 x 29	N/A

Models FD 12 BV FD 12 BH	Single Unit Size	Multiple Section Size
	Duct Width x Height	Duct Width x Height
Min. Section	4 x 3	4 x 3
Max. Section	60 x 53	60 x 53
Max. Duct Size	60 x 53	120 x 53

1. Available Finishes	2. Available Options	3. Construction Details
Standard Finish: <input type="checkbox"/> Galvanized Steel.	(Factory Mounted) <input type="checkbox"/> Optional Fusible Links. <input type="checkbox"/> Model FDS Fire Damper Sleeves.	<ul style="list-style-type: none">Standard Fusible Link is 165°.Larger Sizes are not available for Model FD-11.For Model FD-12 multiple units can be made to fit duct sizes larger than listed.

Notes: (☐ check if provided)

Dimensions are in inches

Cad File Number: FD-B-96

Date: 03/25/2003

Submittal No. FD-B

Page: 1 of 1