

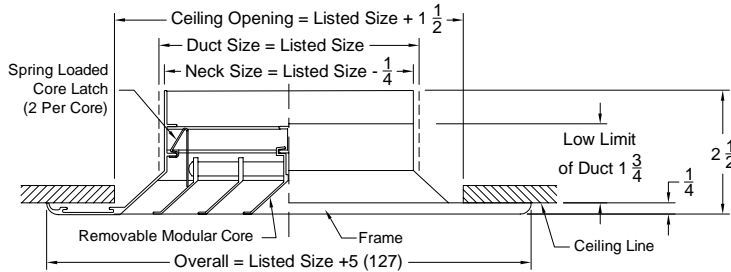
Tag:
Series : **9000**

METAL*AIRE®
Submittal No: 9000

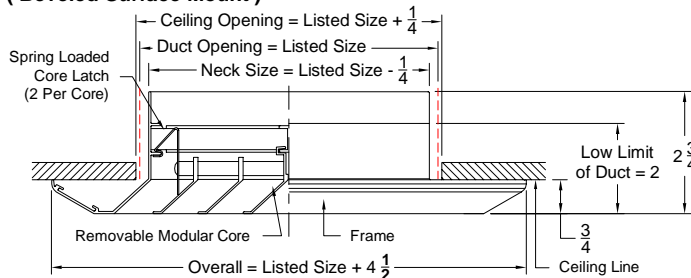
Square / Rectangular Modular Core Diffusers
Extruded Aluminum - 1, 2, 3 or 4 Cores

Models: **9000-1** Surface Mount
 9000-2 Beveled Surface Mount
 9000-6 Lay in T-Bar
 9000-6P Lay in T-Bar Panel

Model 9000-1 (Surface Mount)

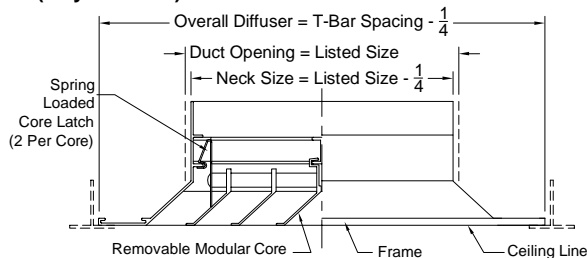


Model 9000-2 (Beveled Surface Mount)



Note For 9000-1 and 9000-2 Models:
Diffuser Listed Neck Sizes - In even multiples of core sizes. Minimum square listed neck size is 4 x 4. Maximum square listed neck size is 36 x 36. Minimum Rectangular listed Sizes 8 x 4. Maximum rectangular listed neck size is 36 x 24.

Model 9000-6 (Lay in T-Bar)

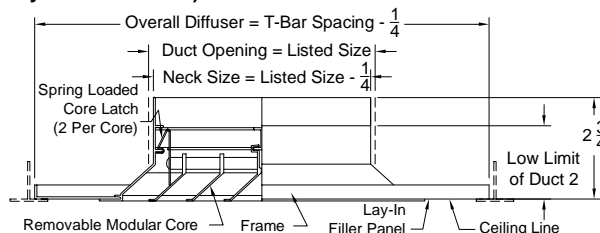


Note For 9000-6 Model:
Diffuser Listed Neck Sizes - In even multiples of core sizes. Neck Dimensions must be 8 x 8, 20 x 8 or 20 x 20 and 4 inches less than T-Bar grid size. For other neck sizes, use model 9000-6P.

Neck Sizes Available For Models: 9000-6 and 9000-6D (with Damper)

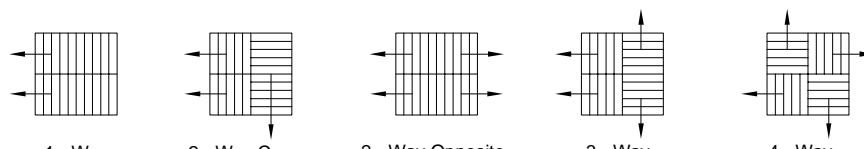
T-Bar Spacing	Listed Neck Size	Overall Diffuser	No. Cores
12 x 12	8 x 8	11 3/4 x 11 3/4	4
24 x 12	20 x 8	23 3/4 x 23 3/4	10
24 x 24	20 x 20	23 3/4 x 23 3/4	4

Model 9000-6P (Lay in T-Bar Panel)



Note For 9000-6P Model:
Diffuser Listed Neck Sizes - In even multiples of core sizes. Minimum square listed neck sizes 4 x 4. Maximum square listed neck size is 36 x 36. Minimum Rectangular listed size is 8 x 4. Maximum rectangular listed neck size is 36 x 24. Listed neck size must be at least 4" less than T-Bar module.

Filed Adjustable Air Deflection Patterns
Obtained By Removing and Rearranging Modular Cores in Frames.



Notes: (☐ check if provided)

Dimensions are in inches

Cad File Number: 9000-p1-18

Date: 03/25/2003

Submittal No. 9000

Page: 1 of 2

Submittal Number 9000

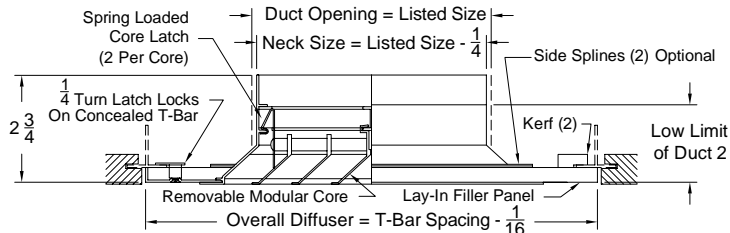
Tag:
Series : 9000

METAL*LAIRE®
Submittal No: 9000

Square / Rectangular Modular Core Diffusers
Extruded Aluminum - 1, 2, 3 or 4 Cores

Models: 9000-7 Concealed T-Bar
9000-8 Tegular T-Bar
9000-9 24 x 24 Donn (USG) Ceiling Grid
Options: OBDR Opposed Blade Damper

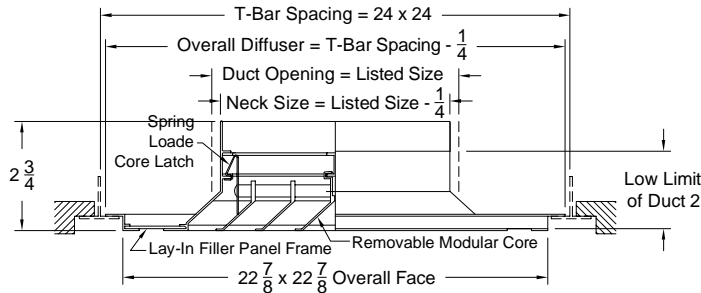
Model 9000-7 (Concealed T-Bar)



Note For 9000-7 Model:

Diffuser Listed Neck Sizes - In even multiples of core sizes. Minimum square listed neck size is 4 x 4. Maximum square listed neck size is 36 x 36. Minimum Rectangular listed Sizes 8 x 4. Maximum rectangular listed neck size is 36 x 24. Maximum Diffuser Listed Neck size must be at least 6" less than T-Bar module.

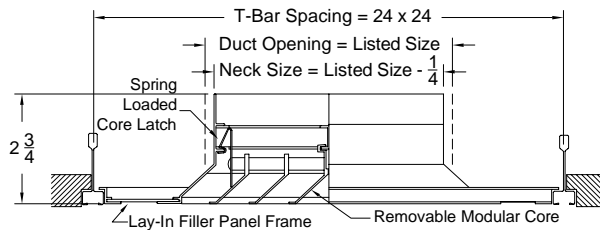
Model 9000-8 (Tegular T-Bar)



Note For 9000-8 and 9000-9 Models:

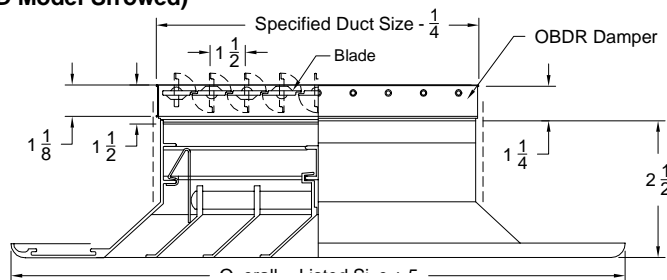
Diffuser listed neck sizes even multiples of core sizes square or rectangular at least below table. Model 9000-8 maximum diffuser listed size must be at least 6" less than T-Bar Module.

Model 9000-9 (24 x 24 Donn Ceiling Grid)



4 x 4	6 x 18	10 x 15
4 x 8	7 x 7	11 x 11
4 x 12	7 x 14	12 x 12
5 x 5	8 x 8	12 x 16
5 x 10	8 x 16	14 x 14
5 x 15	9 x 9	15 x 15
6 x 6	9 x 18	16 x 16
6 x 12	10 x 10	18 x 18

Option: OBDR Damper (9000-1D Model Showed)



1. Available Finishes	2. Available Accessories	3. Construction Details
<input type="checkbox"/> Standard Finish: 01 White Optional Finish (no extra charge): <input type="checkbox"/> 02 Aluminum paint. Optional Finishes (additional charge): <input type="checkbox"/> 03 Black. <input type="checkbox"/> 28 Custom Color.	(Shipped Unattached) <input type="checkbox"/> OBDR Rollformed Opposed Blade Damper. <input type="checkbox"/> L9 Rectangular Equalizing Grid. <input type="checkbox"/> TR DEEP Square to Round Transition.	<ul style="list-style-type: none">Sizes are only as listed.

Notes: (☐ check if provided)

Dimensions are in inches

Cad File Number: 9000-p2-18

Date: 03/25/2003

Submittal No. 9000

Page: 2 of 2