

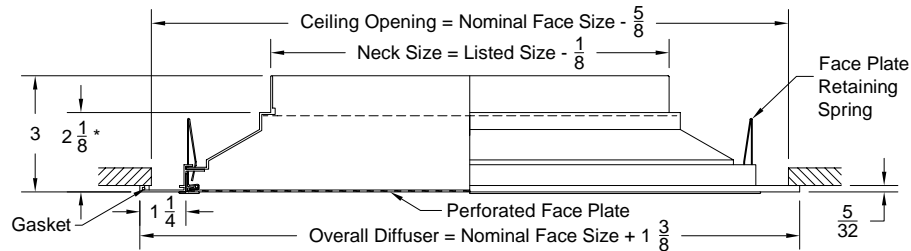
**Tag:**  
**Series :**                **7000R**

**METAL\*LAIRE®**  
**Submittal No:**        **7000-R**

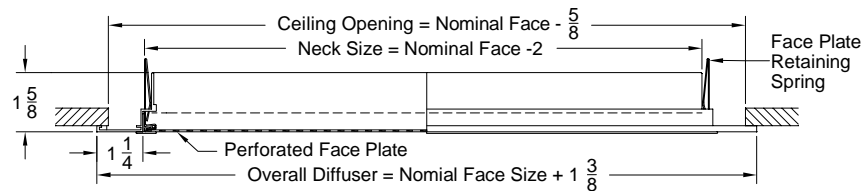
**Perforated Return Diffusers**  
**Extruded Aluminum Frame**

**Models:**    **7000-R1**        Surface Mount - 8x8 / 21x21 and 24x24 / 48x24 Face Size  
               **7000-R1\***        Surface Mount - Low Profile ( 2" Under )  
               **7000-R6**        Lay in T-Bar - All Sizes Except 24x24  
               **7000-R6\***        Lay in T-Bar - Only 24x24 Grid Size  
               **7000-R7**        Concealed Spline 12x12 / 24x24 Grid Size

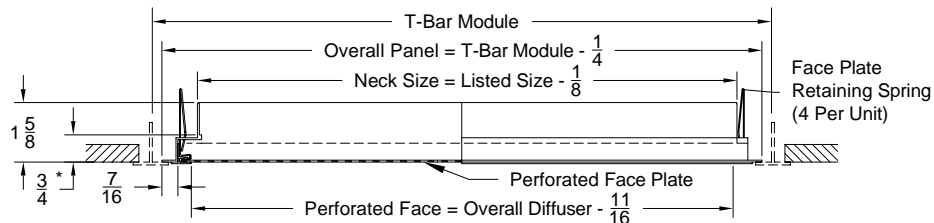
**Model: 7000R-1 ( Surface Mount - Flat Border )**



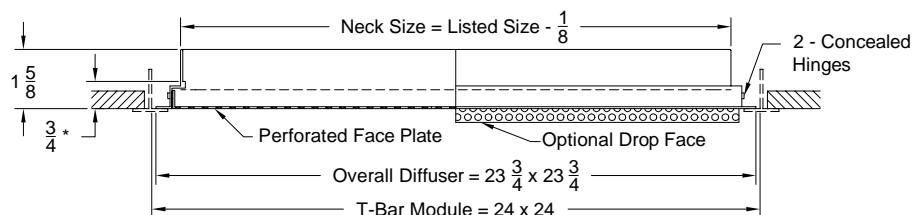
**Model: 7000R-1 \* ( Surface Mount - Low Profile )**



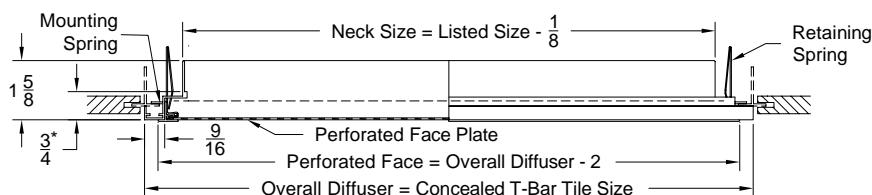
**Model: 7000R-6 ( Lay in T-Bar All sizes except 24 x 24 )**



**Model: 7000R-6 \* ( Lay in T-Bar - 24x24 Grid Size Only )**



**Model: 7000R-7 ( Concealed Spline )**



Max. Listed Size For  
Each Tile Size Shown.

Tile Size	Listed Size
12 x 12	10 x 10
24 x 12	22 x 10
24 x 24	22 x 22

Smaller Listed Sizes Are  
Available For Each Tile Size

\* Distance To Bottom Of Duct Should Be Maintained as Closely As Possible

Dimensions are in inches

**Tag:**  
**Series :** 7000R

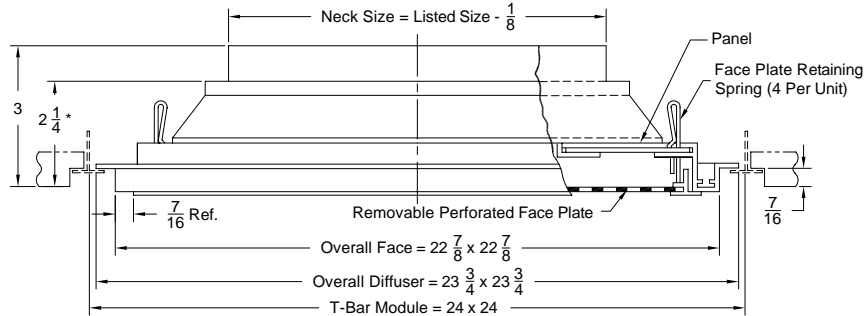
**METAL\*LAIRE®**  
**Submittal No:** 7000-R

**Perforated Return Diffusers  
Extruded Aluminum Frame**

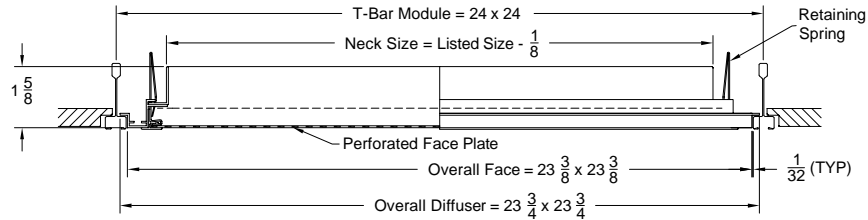
**Models:** 7000-R8 Tegular T-Bar  
7000-R9 Donn Fineline (USG) Ceiling Grid

**Option:** D7 Opposed Blade Damper

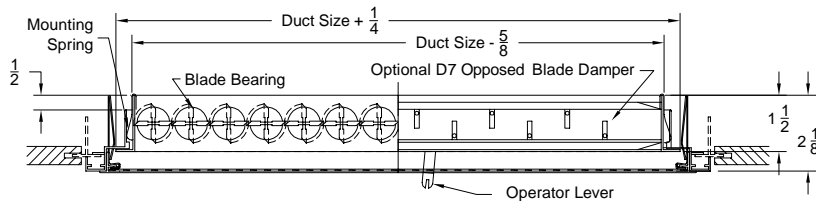
**Model: 7000-R8 ( Tegular T-Bar )**



**Model: 7000-R9 ( Donn Fineline Ceiling Grid - Low Profile )**

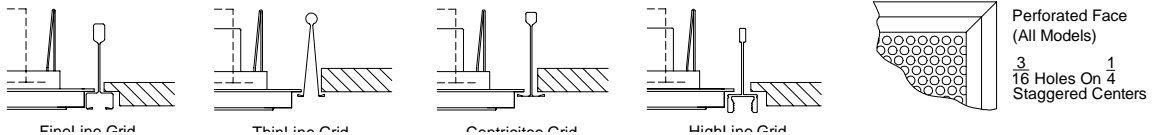


**Option: D7 Opposed Blade Damper ( Showed Model 7000-R7 D7 - Low Profile )**



\* Distance To Bottom Of Duct Should Be Maintained As Closely As Possible

**Option: Ceiling Grid For 7000-R9 Model**



1. Available Finishes	2. Available Accessories	3. Construction Details
<b>Standard Finish:</b> <input type="checkbox"/> 01 White. <b>Optional Finish (no extra charge):</b> <input type="checkbox"/> 02 Aluminum. <b>Optional Finishes (additional charge):</b> <input type="checkbox"/> 03 Black. <input type="checkbox"/> 22 (BBP) Black Back pan/ white face & border. <input type="checkbox"/> 28 Custom Color.	(Accessories are shipped unattached) <b>Square Neck :</b> <input type="checkbox"/> D7 Opposed Blade Damper <input type="checkbox"/> TR Square to Round Transition. <b>Round Neck :</b> <input type="checkbox"/> BDS Butterfly Damper. <input type="checkbox"/> RSD Radial Shutter Damper. <b>Replacement Parts:</b> <input type="checkbox"/> Replacement Face Plates.	<ul style="list-style-type: none"> <li>Available only in sizes listed in Table.</li> </ul>

Notes: ( ☐ check if provided )

Dimensions are in inches

Cad File Number: 7000-R-p2-21	Date: 03/25/2003	Submittal No. 7000-R	Page: 2 of 2
-------------------------------	------------------	----------------------	--------------