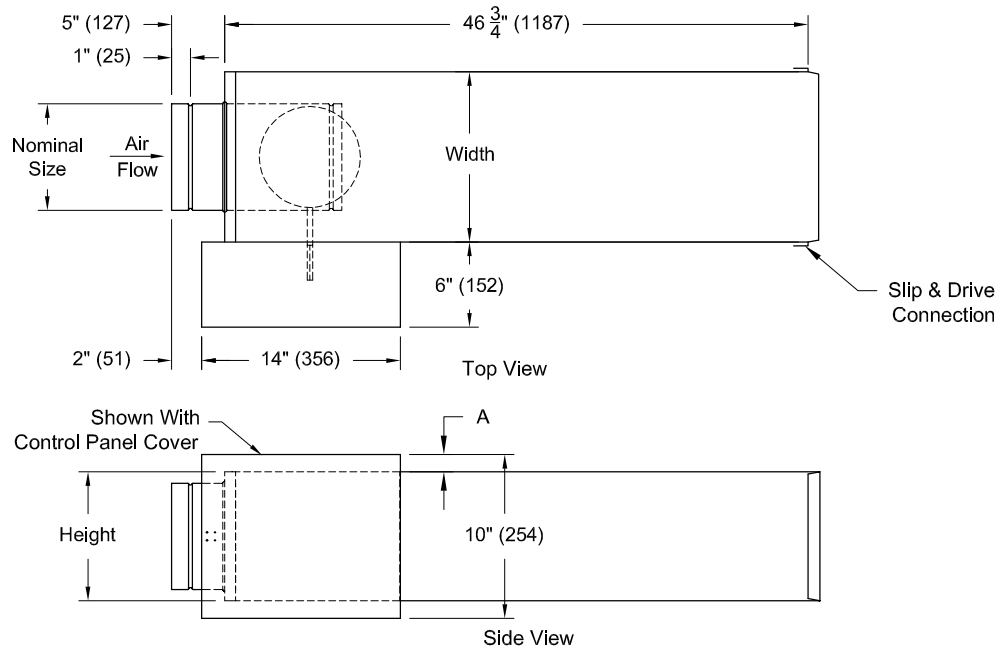


Tag:  
Series : TL500

**METAL\*AIRE®**  
Submittal No: TL500-SA

**Single Duct Air Terminal With  
Integral Sound Attenuator**

Models: TL506      6" Inlet  
          TL508      8" Inlet  
          TL510      10" Inlet



UNITS are manufactured with 20GA (1.0mm) Galvanized Steel Inlet Valve Assembly.

INSULATION: ☐ 1.5#/FT<sup>3</sup> (24 Kg/m<sup>3</sup>) Dual Density, (4# Skin) (64 Kg/m<sup>3</sup>) Coated Fiberglass, All Exposed Edges Sealed  
☐ 3#/FT<sup>3</sup> (48 Kg/m<sup>3</sup>) Reinforced Foil Covered, Fiberglass. No Exposed Edges.

☐ Engineered Polymer Closed Cell Foam (No Fiberglass)

All Insulations Meet NFPA 90A and UL 181 for Erosion, Mold Growth, and 25/50 Flame Spread/Smoke Density Ratings, All Insulations are 1/2"

Model Number	Nominal Size	Height	Width	Dim. A	Unit Weight	
					Lbs	Kg
TL506	6" Dia. (152)	8" (203)	12" (305)	2" (51)	24	(11)
TL508	8" Dia. (203)	10" (254)	12" (305)	1" (25)	28	(13)
TL510	10" Dia.(254)	12" 1/2 (318)	14" (356)	-	34	(15)

Notes: ( ☐ check if provided)

1. Available Finishes	2. Construction Details	3. Construction Details (cont.)
<input type="checkbox"/> Reinforced foil covered fiberglass, no exposed edges <input type="checkbox"/> Engineered polymer close cell form <input type="checkbox"/> Metal line <input type="checkbox"/> Control panel covered <input type="checkbox"/> Flanged discharge	<ul style="list-style-type: none"><li>• Units are manufactured with 22-gauge casing and 20-gauge inlet valve assembly</li><li>• All insulations meet NFPA 90A and UL 181</li><li>• Standard insulation dual density, coated fiberglass, all exposed edges sealed</li><li>• Slip and drive connections discharge standard</li></ul>	<ul style="list-style-type: none"><li>• All insulation 1/2" (12.7 mm)</li></ul>

Submittal No. TL500-SA

Date: 06/16/2004

Dimensions are in inches

Page: 1 of 1