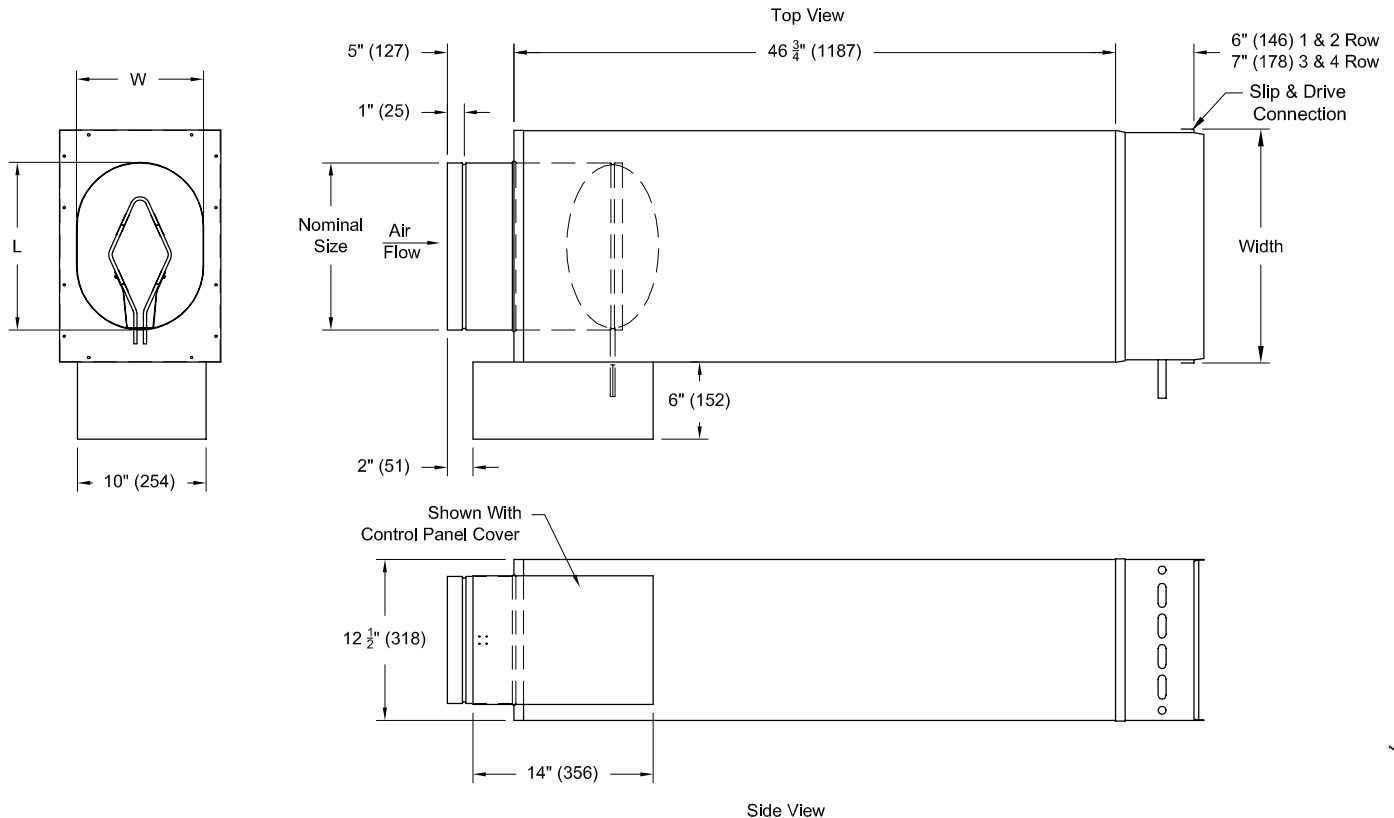


Tag:  
Series : TL500

**METAL\*AIRE®**  
Submittal No: TL500-O-HW-SA

**Single Duct Air Terminal Low Profile With  
Hot Water Coils and Integral Sound Attenuator**

Model: TL512 12" Oval Inlet  
TL514 14" Oval Inlet  
TL516 16" Oval Inlet



UNITS are manufactured with 20GA (1.0mm) Galvanized Steel Inlet Valve Assembly.  
INSULATION: ☐ 1.5 #/ft<sup>3</sup> (24 Kg/m<sup>3</sup>) Dual Density, (4# Skin) (64 Kg/m<sup>3</sup>) Coated Fiberglass, All Exposed Edges Sealed  
☐ 3 #/ft<sup>3</sup> (48 Kg/m<sup>3</sup>) Reinforced Foil Covered, Fiberglass. No Exposed Edges.  
☐ Engineered Polymer Closed Cell Foam (No Fiberglass)  
All Insulations Meet NFPA 90A and UL 181 for Erosion, Mold Growth, and 25/50 Flame Spread/Smoke Density Ratings, All Insulations are 1/2"

Model Number	Nominal Size	Dim. W x L	CFM Range	Width	Unit Weight with			
					1R HW Coil	2R HW Coil	3R HW Coil	4R HW Coil
TL512	12 (Oval) (300)	10 (254) x 13 (330)	0-2200 (0-1.04)	18 (460)	31 lbs (14 kg)	34 lbs (15 kg)	40 lbs (18 kg)	43 lbs (19 kg)
TL514	14 (Oval) (350)	10 (254) x 16.25 (413)	0-3000 (0-1.42)	24 (610)	34 lbs (15 kg)	39 lbs (17 kg)	48 lbs (21 kg)	53 lbs (24 kg)
TL516	16 (Oval) (400)	10 (254) x 19.38 (492)	0-4000 (0-1.89)	28 (710)	42 lbs (19 kg)	48 lbs (21 kg)	54 lbs (25 kg)	59 lbs (26 kg)

Notes: (☐ check if provided)

1. Available Options	1. Available Options	2. Standard Construction Details
<input type="checkbox"/> 1" Fiberglass <input type="checkbox"/> 1/2" Foil Lined Fiberglass <input type="checkbox"/> 1" Foil Lined Fiberglass <input type="checkbox"/> 1" Thermopure <input type="checkbox"/> 1/2" Thermopure	<input type="checkbox"/> Engineered Polymer Foam <input type="checkbox"/> Slip & Drive Discharge Adapter <input type="checkbox"/> 20-Gauge Casing <input type="checkbox"/> Access Door <input type="checkbox"/> Metal Liner	<ul style="list-style-type: none"><li>• 1/2" Fiberglass</li><li>• Flush Discharge for Flanged Duct Connection</li><li>• Units are manufactured with 22-gauge casing and 20-gauge inlet valve assembly</li><li>• All insulations meet NFPA 90A and UL 181</li></ul>