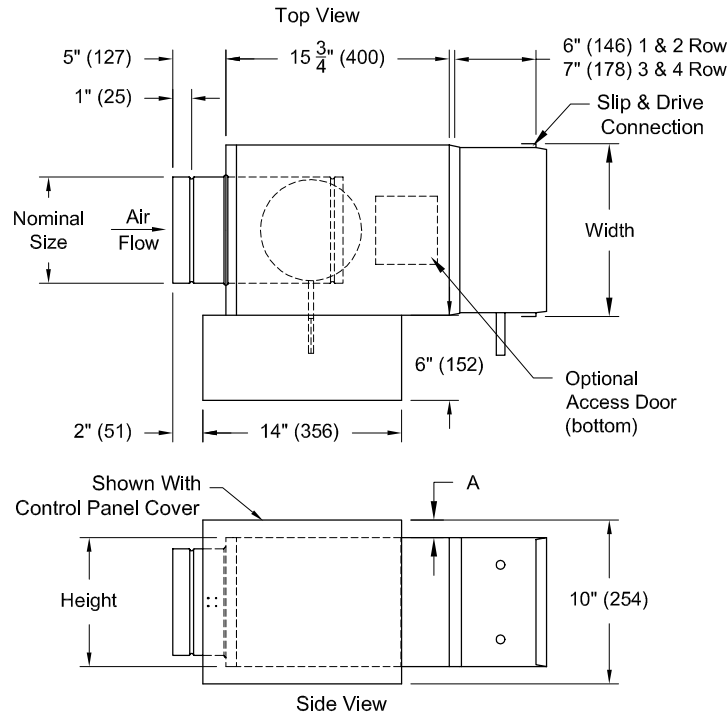


Tag:
Series : TL500

METAL*AIRE®
Submittal No: TL500-HW

**Single Duct Air Terminal With
Hot Water Coil**

Models: TL506 6" Inlet
 TL508 8" Inlet
 TL510 10" Inlet



UNITS are manufactured with 20GA (1.0mm) Galvanized Steel Inlet Valve Assembly.
INSULATION: ☐ 1.5#/FT³ (24 Kg/m³) Dual Density, (4# Skin) (64 Kg/m³) Coated Fiberglass, All Exposed Edges Sealed
☐ 3#/FT³ (48 Kg/m³) Reinforced Foil Covered, Fiberglass. No Exposed Edges.
☐ Engineered Polymer Closed Cell Foam (No Fiberglass)
All Insulations Meet NFPA 90A and UL 181 for Erosion, Mold Growth, and 25/50 Flame Spread/Smoke Density Ratings, All Insulations are 1/2"

Model Number	Nominal Size	Height	Width	Dim. A	Unit Weight with			
	In. (mm)	In. (mm)	In. (mm)	In. (mm)	1R HW Coil	2R HW Coil	3R HW Coil	4R HW Coil
TL506	6 Dia. (152)	8 (203)	12 (305)	2 (51)	29 lbs (13 kg)	30 lbs (14 kg)	33 lbs (15 kg)	35 lbs (16 kg)
TL508	8 Dia. (203)	10 (254)	12 (305)	1 (25)	33 lbs (15 kg)	35 lbs (16 kg)	39 lbs (18 kg)	41 lbs (19 kg)
TL510	10 Dia. (254)	12 1/2 (318)	14 (356)	-	40 lbs (18 kg)	43 lbs (20 kg)	48 lbs (22 kg)	51 lbs (23 kg)

Notes: (☐ check if provided)

1. Available Finishes	2. Construction Details	3. Construction Details (cont.)
<input type="checkbox"/> Reinforced foil covered fiberglass, no exposed edges <input type="checkbox"/> Engineered polymer closed cell form <input type="checkbox"/> Metal line <input type="checkbox"/> Control panel covered <input type="checkbox"/> Flanged discharge	<ul style="list-style-type: none">Units are manufactured with 22-gauge casing and 20-gauge inlet valve assemblyAll insulations meet NFPA 90A and UL 181Standard insulation dual density, coated fiberglass, all exposed edges sealedSlip and drive connections discharge standard	<ul style="list-style-type: none">All insulation 1/2" (12.7 mm)

Submittal No. TH500-HW

Date: 06/16/2004

Dimensions are in inches

Page: 1 of 1