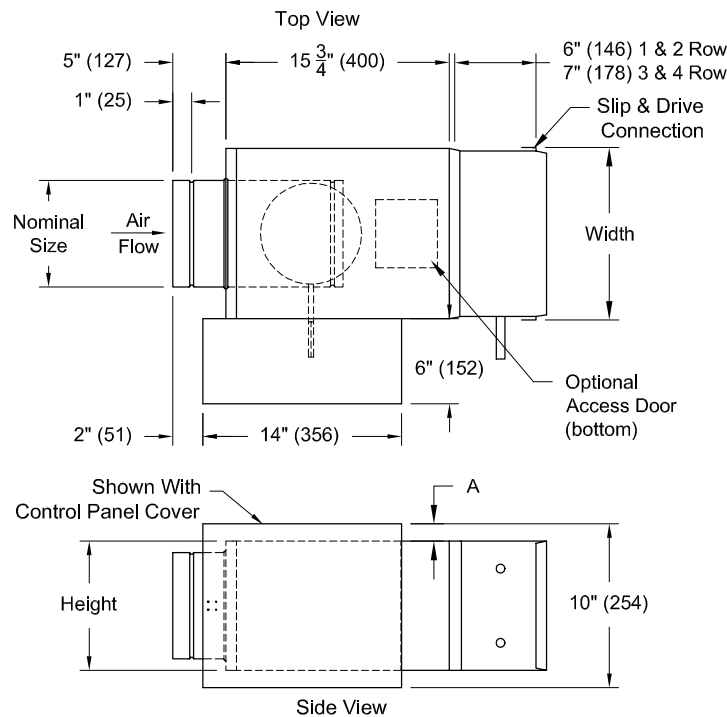


Tag:
Series : TH500

METAL*AIRE®
Submittal No: TH500-HW

**Single Duct Air Terminal With
Hot Water Coil**

Models: TH506 6" Inlet
TH508 8" Inlet
TH510 10" Inlet
TH512 12" Inlet
TH514 14" Inlet
TH516 16" Inlet



UNITS are manufactured with 20GA (1.0mm) Galvanized Steel Inlet Valve Assembly.

INSULATION: ☐ 1.5#/FT³ (24 Kg/m³) Dual Density, (4# Skin) (64 Kg/m³) Coated Fiberglass, All Exposed Edges Sealed

☐ 3#/FT³ (48 Kg/m³) Reinforced Foil Covered, Fiberglass. No Exposed Edges.

☐ Engineered Polymer Closed Cell Foam (No Fiberglass)

All Insulations Meet NFPA 90A and UL 181 for Erosion, Mold Growth, and 25/50 Flame Spread/Smoke Density Ratings, All Insulations are 1/2"

Model Number	Nominal Size In. (mm)	Height In. (mm)	Width In. (mm)	Dim. A In. (mm)	Unit Weight with			
					1R HW Coil	2R HW Coil	3R HW Coil	4R HW Coil
TH506	6 Dia. (152)	8 (203)	12 (305)	2 (51)	16.7 (7.6)	17.7 (8)	21.2 (9.6)	22.5 (10.2)
TH508	8 Dia. (203)	10 (254)	12 (305)	1 (25)	20 (9.1)	21.6 (9.8)	26 (11.8)	27.7 (12.6)
TH510	10 Dia. (254)	12 1/2 (318)	14 (356)	-	24.3 (11)	26.6 (12)	32.4 (14.7)	24.8 (15.8)
TH512	12 Dia. (305)	15 (381)	16 (406)	-	31 (14.1)	34.3 (15.6)	40.1 (18.2)	43.4 (19.7)
TH514	14 Dia. (356)	17 1/2 (445)	20 (508)	-	34.1 (15.5)	38.9 (17.7)	48 (21.8)	52.8 (10.2)
TH516	16 Dia. (406)	18 (457)	24 (610)	-	42.3 (19.2)	48 (21.8)	53.7 (24.3)	59.4 (26.9)

Notes: (☐ check if provided)

1. Available Finishes	2. Construction Details	3. Construction Details (cont.)
<input type="checkbox"/> Reinforced foil covered fiberglass, no exposed edges <input type="checkbox"/> Engineered polymer closed cell form <input type="checkbox"/> Metal line <input type="checkbox"/> Control panel covered <input type="checkbox"/> Flanged discharge	<ul style="list-style-type: none">Units are manufactured with 22-gauge casing and 20-gauge inlet valve assemblyAll insulations meet NFPA 90A and UL 181Standard insulation dual density, coated fiberglass, all exposed edges sealedSlip and drive connections discharge standard	<ul style="list-style-type: none">All insulation 1/2" (12.7 mm)

Submittal No. TH500-HW

Date: 06/16/2004

Dimensions are in inches

Page: 1 of 1