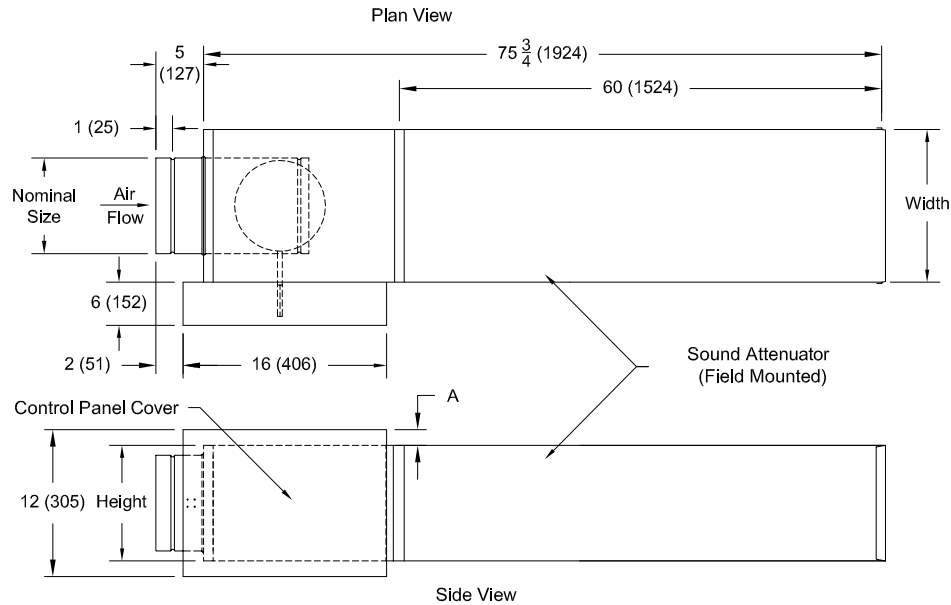


**Series TH500**Single Duct Air Terminal with  
60" Sound Attenuator

<b>Models</b>	<b>TH506</b>	6" Inlet
	<b>TH508</b>	8" Inlet
	<b>TH510</b>	10" Inlet
	<b>TH512</b>	12" Inlet
	<b>TH514</b>	14" Inlet
	<b>TH516</b>	16" Inlet
	<b>TH520</b>	16" x 20" Rect. Inlet
	<b>TH524</b>	16" x 24" Rect. Inlet

Tag:

**METAL\*AIRE®**  
**Submittal**

UNITS are manufactured with 20GA (1.0mm) Galvanized Steel Inlet Valve Assembly.

INSULATION: ☐ 1.5#/FT<sup>3</sup> (24 Kg/m<sup>3</sup>) Dual Density, (4# Skin) (64 Kg/m<sup>3</sup>) Coated Fiberglass, All Exposed Edges Sealed☐ 3#/FT<sup>3</sup> (48 Kg/m<sup>3</sup>) Reinforced Foil Covered, Fiberglass. No Exposed Edges.☐ Engineered Polymer Closed Cell Foam (No Fiberglass)

All Insulations Meet NFPA 90A and UL 181 for Erosion, Mold Growth, and 25/50 Flame Spread/Smoke Density Ratings, All Insulations are 1/2"

Model Number	Nominal Size In. (mm)	Height In. (mm)	Width In. (mm)	Dim "A" In. (mm)
TH506	6 Dia. (152)	8 (203)	12 (305)	2 (51)
TH508	8 Dia. (203)	10 (254)	12 (305)	1 (25)
TH510	10 Dia. (254)	12 1/2 (318)	14 (356)	-
TH512	12 Dia. (305)	15 (381)	16 (406)	-
TH514	14 Dia. (356)	17 1/2 (445)	20 (508)	-
TH516	16 Dia. (406)	18 (457)	24 (610)	-
TH520	16" x 20" Rect.	20 (508)	30 (762)	-
TH524	16" x 24" Rect.	20 (508)	38 (965)	-

Notes: ( ☐ check if provided)

1. Options	2. Construction Details	3. Construction Details (cont.)
<input type="checkbox"/> Reinforced foil covered fiberglass, no exposed edges, <input type="checkbox"/> Engineered polymer closed cell foam <input type="checkbox"/> Control panel covered <input type="checkbox"/> Flanged discharge <input type="checkbox"/>	<ul style="list-style-type: none"><li>• Units are manufactured with 22 gauge casing and 20 gauge inlet valve assembly,</li><li>• All insulations meet NFPA 90A and UL 181,</li><li>• Standard insulation dual density, coated fiberglass, all exposed edges sealed,</li><li>• Slip and drive connections discharge standard</li></ul>	<ul style="list-style-type: none"><li>• All insulation 1/2" ( 12.7 mm )</li><li>•</li><li>•</li><li>•</li><li>•</li><li>•</li></ul>

Dimensions are in inches

Job Name: \_\_\_\_\_

Architect: \_\_\_\_\_

Location: \_\_\_\_\_

Engineer: \_\_\_\_\_

Submitted By: \_\_\_\_\_

Contractor: \_\_\_\_\_

Cad File Number: TH500-60-SA

Date: 09/06/2002 Submittal No. TH500-60-SA

Page: 1 of 1

Submittal Number TH500-60-SA