

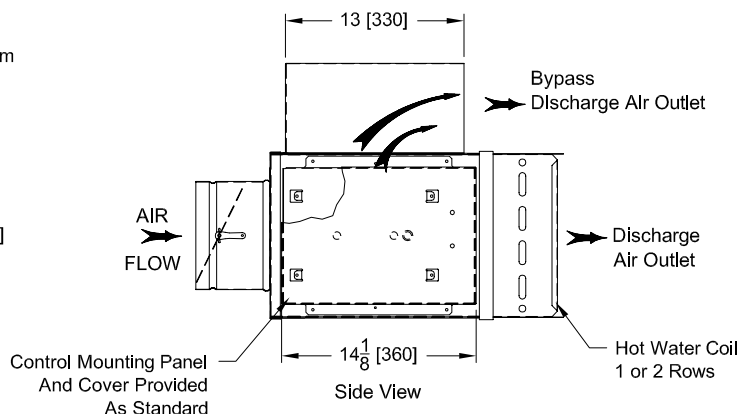
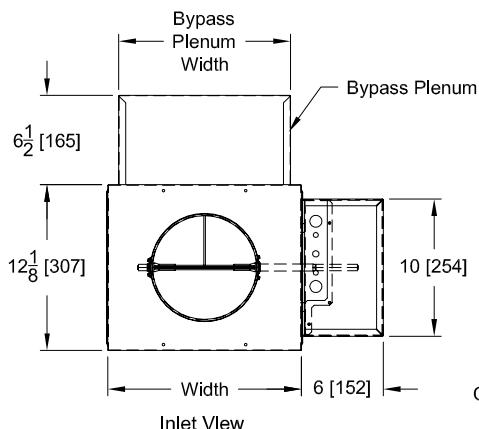
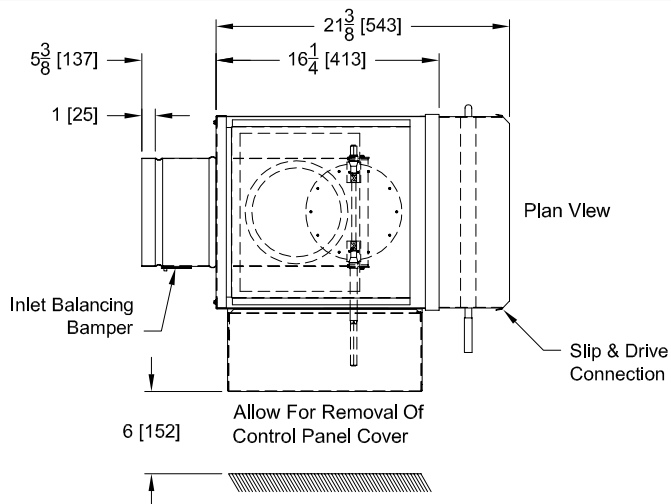
Tag:
Series : BP500

METAL*AIRE®
Submittal No: BP500-HW

**Single Duct Air Terminal Bypass
With Hot Water Coil**

Models: BP506 6" Inlet
BP508 8" Inlet
BP510 10" Inlet
BP512 12" Oval Inlet
BP514 14" Oval Inlet
BP516 16" Oval Inlet

Model Number	Nominal Size	CFM Range	Width	Bypass Plenum Width
BP506	6 (Round) (152)	0-600	12 (305)	10 1/2 (267)
BP508	8 (Round) (203)	0-1000	14 (356)	12 1/2 (318)
BP510	10(Round) (254)	0-1600	16 (406)	14 1/2 (368)
BP512	12 (Oval) (305)	0-2200	18 (457)	16 1/2 (419)
BP514	14 (Oval) (356)	0-3000	24 (610)	22 1/2 (572)
BP516	16 (Oval) (406)	0-4000	28 (711)	26 1/2 (673)



UNITS are manufactured with 20GA (1.0mm) Galvanized Steel Inlet Valve Assembly.
INSULATION: ☐ 1.5#/FT³ (24 Kg/m³) Dual Density, (4# Skin) (64 Kg/m³) Coated Fiberglass, All Exposed Edges Sealed
☐ 3#/FT³ (48 Kg/m³) Reinforced Foil Covered, Fiberglass. No Exposed Edges.
☐ Engineered Polymer Closed Cell Foam (No Fiberglass)
All Insulations Meet NFPA 90A and UL 181 for Erosion, Mold Growth, and 25/50 Flame Spread/Smoke Density Ratings, All Insulations are 1" R=4.2

Notes: (☐ check if provided)

1. Available Finishes	2. Construction Details	3. Construction Details (cont.)
<input type="checkbox"/> Reinforced foil covered fiberglass, no exposed edges <input type="checkbox"/> Engineered polymer closed cell form <input type="checkbox"/> Metal line <input type="checkbox"/> Control panel covered <input type="checkbox"/> Flanged discharge	<ul style="list-style-type: none">Units are manufactured with 22-gauge casing and 20-gauge inlet valve assemblyAll insulations meet NFPA 90A and UL 181Standard insulation dual density, coated fiberglass, all exposed edges sealedSlip and drive connections discharge standard	<ul style="list-style-type: none">All insulation 1" (25 mm)

Submittal No. BP500-HW

Date: 10/07/2004

Dimensions are in inches

Page: 1 of 1