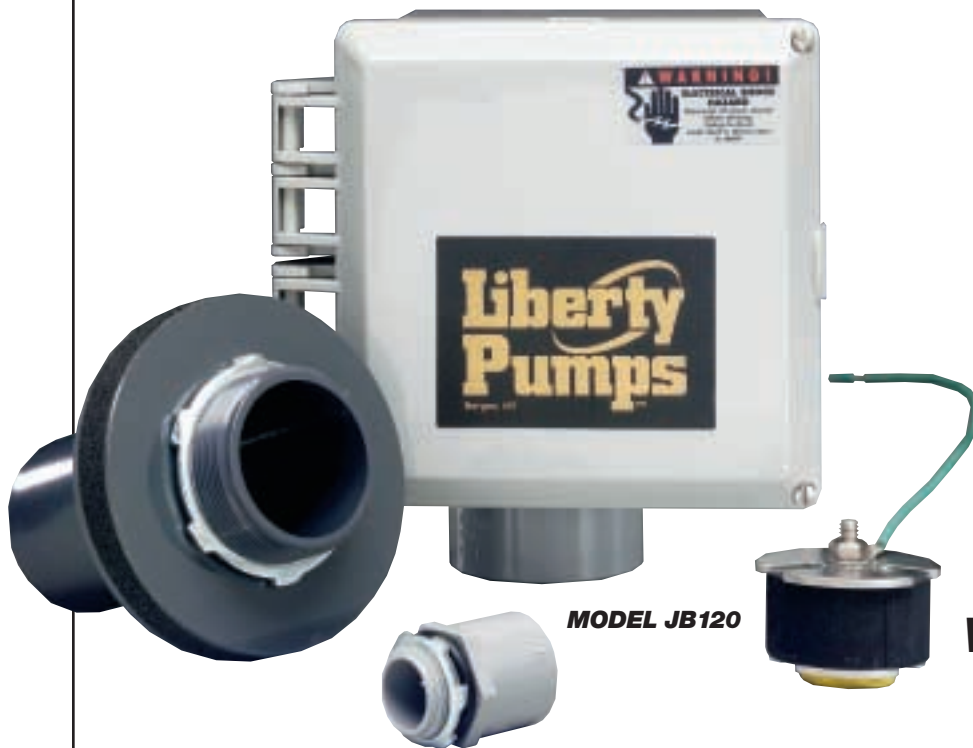


Liberty Pumps™



NEW!
MODEL
JB120
MODEL
JB230
Pump Station
Junction Box
Provides Easy
Wiring Connection
for Pump Stations



The JB120 and JB230 provide an easy and convenient way to connect all wiring necessary in a pump station application.

The JB-Series includes a receptacle (120V or 230V) that accepts a Piggy-back plug from the pump. An easy-to-use terminal strip is also included for connection of an alarm system.



JB120 and JB230

Pump Station Junction Box

All Models Feature:

- NEMA 4x enclosure with hinged door
- Separate alarm and pump control circuit
- Receptacle for pump and pump circuit (120V or 230V)
- Riser extension coupling and washers
- Custom engineered liquid-tight cable seal
- Electrical conduit hub
- Strain relief for pump and float cords provided by cord seal
- Terminal strip for use with alarm system
- Separate alarm and pump control circuitry provided by terminal strip
- Entire control system (panel and switches) is UL Listed to meet and/or exceed industry safety standards

- Dual safety certification for the United States and Canada

Specifications

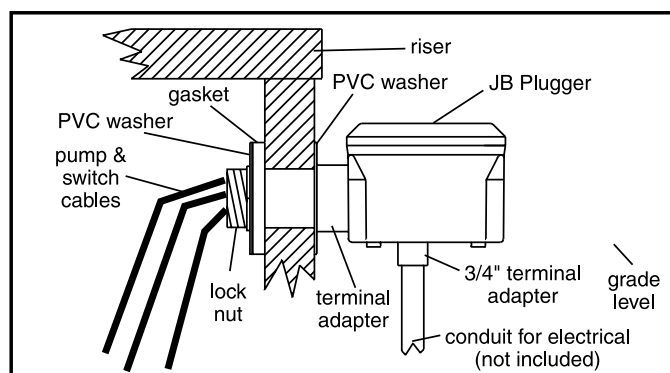
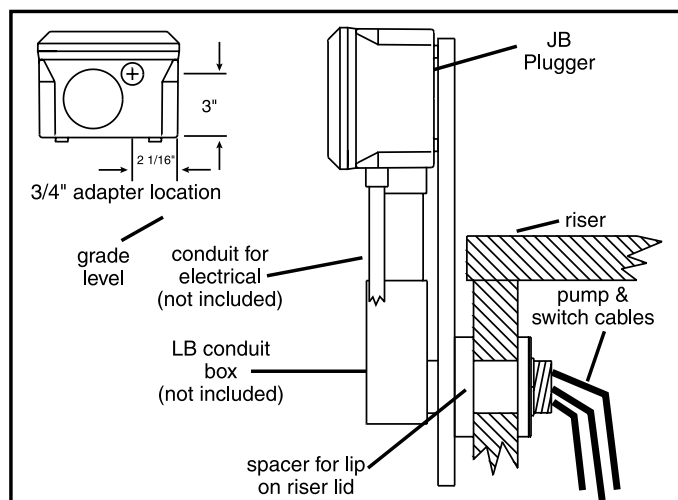
Model	Voltage
JB120	120V
JB230	230V

Enclosure: 6 x 6 x 4 inch (15.24 x 15.24 x 10.16cm), NEMA 4x weatherproof thermoplastic

Receptacle: 120 VAC-NEMA type 5-15;
230 VAC NEMA type 6-15

Cord Seal: Liquid-tight cord seal with strain relief

Typical Installations:



Specifications are subject to change without notice.