

NEW GENERATION HIGH LOW SYSTEM

TM-420A-_____

- Large Type TM Thermostatic water mixing valve, adjustable high temperature limit stop*, inlet checkstops, wall support, outlet ball valve
- Small Type TM Thermostatic water mixing valve, adjustable high temperature limit stop*, inlet checkstops, outlet ball valve
- 3/4 " inlets, 1" outlet (19mm X 25mm)
- 1 GPM (3.7 l/min) minimum flow capacity
- Inlet manifold piping
- Locking temperature regulator
- Factory assembled and tested
- Select piping finish below

Valve assembly is ASSE 1017 listed



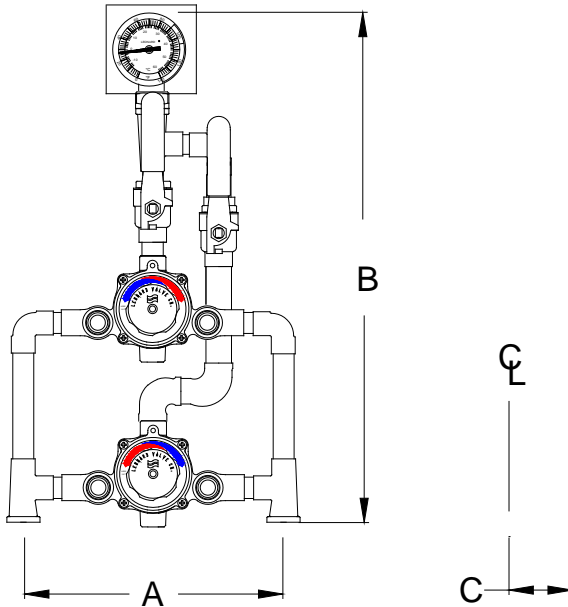
Valve assembly is CUPC listed



OPTIONS

- ___ SUFFIX RF - Rough bronze finish
- ___ SUFFIX CP - Chrome plated
- ___ SUFFIX DT - Color-coded dial thermometer (0 to 140°, -10 to 60°C)
- ___ SUFFIX 37C - Separate (loose) color-coded dial thermometer (0 to 140°, -10 to 60°C)
- ___ SUFFIX IT - Inlet Thermometers
- ___ SUFFIX TC - Test connection, additional DT option must also must be selected, see reverse.

Note: Leonard Valve Company reserves the right of product, or design modifications without notice or obligation.



A=11" +/- 1/2" B=21-3/4" C=1-1/2"
(Shown with option DT)

MINIMUM FLOW (GPM) (l/min)	SYSTEM PRESSURE DROP (PSIG)										PSI
	5	10	15	20	25	30	35	40	45	50	
	.3	.7	.97	1.4	1.7	2.1	2.4	2.8	3.1	3.4	BAR
1.0 (3.8)	12 45	18 68	22 83	26 98	30 114	33 125	36 136	39 148	42 159	44 167	GPM l/min

NOTE: Flowrates will vary depending on existing field conditions. Leonard Valve Company always recommends using CASPAK® sizing software for proper valve sizing and model number applications.

CAUTION! All thermostatic water mixing valves have limitations. They will NOT provide the desired accuracy outside of their flow capacity range. Consult the Flow Capacity Chart and DO NOT OVERSIZE. Minimum flow must be no less than as indicated.

***NOTE:** A limit stop, set for 120°F (49°C), is simply a mechanical setting to prevent excessive handle rotation. If incoming water is hotter than 150°F (65.5°C), the temperature of the factory test, the valve when turned to full HOT may deliver water in excess of 120°F and the limit stop MUST BE RESET BY THE INSTALLER

Engineer's Approval

Job # _____

Arch/Eng. _____

Contractor _____

Note: The models shown represent Leonard Products which are believed to be equivalent in type and function to items specified. Leonard Valve Company is not responsible for errors or omissions due to differences in interpretations of information provided.



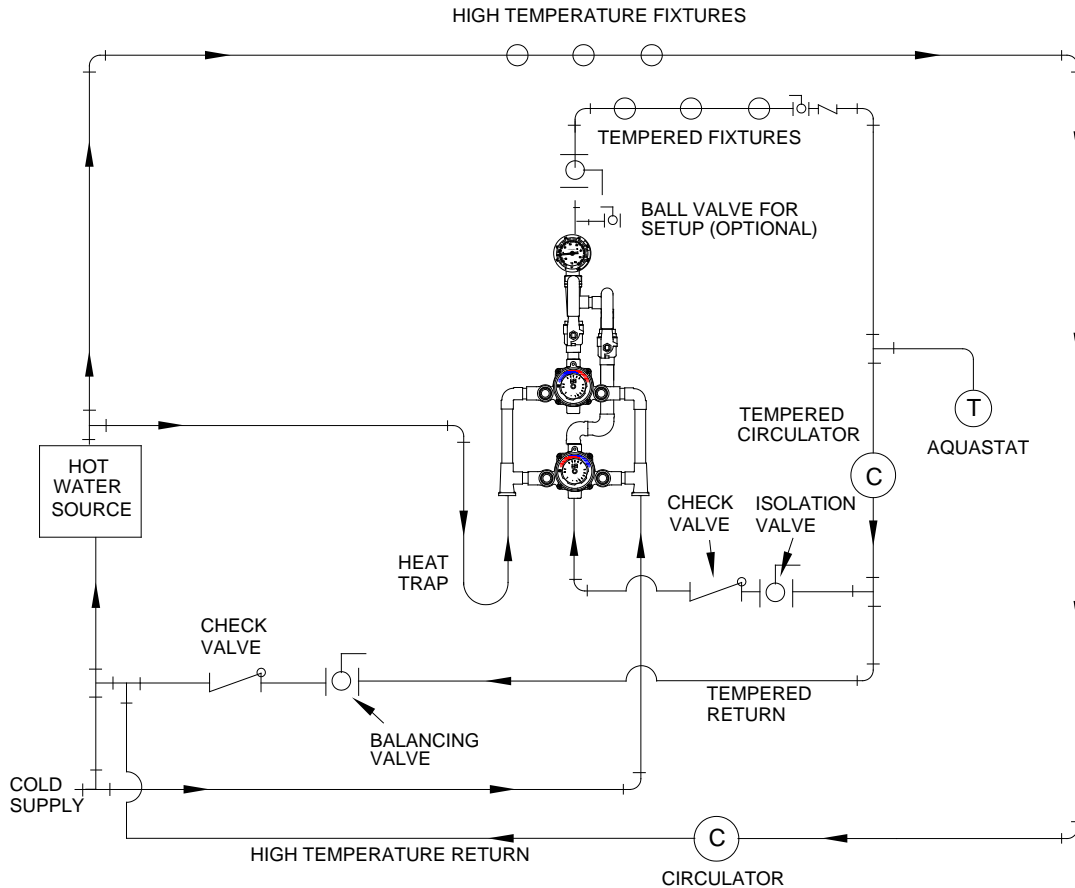
1360 Elmwood Avenue, Cranston, RI 02910 USA

Phone: 401.461.1200 Fax: 401.941.5310

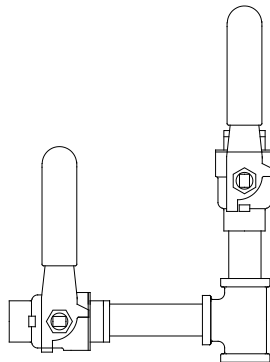
Email: info@leonardvalve.com

Web Site: <http://www.leonardvalve.com>

PIPING METHOD #2, only for systems circulating 8 GPM or less. See Methods #4 or #5 for higher circulated flow rates.



(OPTIONAL) TEST CONNECTION, Line size tee, with ball valves.



1360 Elmwood Avenue, Cranston, RI 02910 USA

Phone: 401.461.1200 Fax: 401.941.5310

Email: info@leonardvalve.com

Web Site: <http://www.leonardvalve.com>