

# THERMOSTATIC MIXING VALVE

## MODEL 170

### THERMOSTATIC POINT OF USE MIXING VALVE

**MODEL 3/8" inlets, 3/8" outlet, compression  
connections**

#### MATERIALS:

- Bronze body
- Locked temperature adjustment cap (vandal resistant)
- Copper encapsulated thermostat assembly with polymer thermoplastic shuttle
- Stainless steel springs
- Buna-N O'rings
- Integral check valves on hot and cold inlets
- Compression fittings on inlets and outlet

#### PRESSURE-TEMPERATURE:

- Minimum Flow: 0.5 GPM (1.9 l/min)
- Maximum Pressure: 125 PSI (8.6 BAR)
- Maximum Hot Water temperature: 200°F (93°C)
- Approach Temperature 5°F (2.8°C) above set point.
- Temperature adjustment range, 90-140°F (32-60°C) \*\*

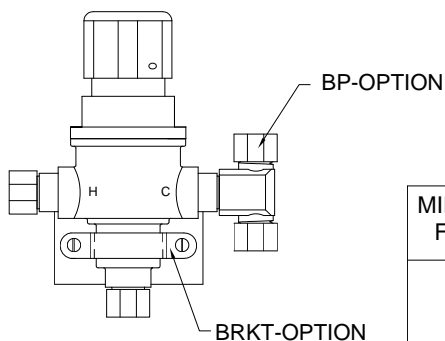
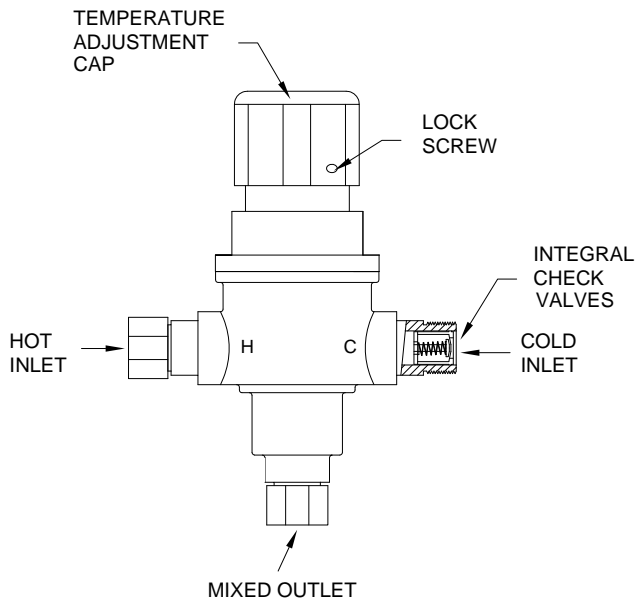
#### OPTION: (Furnished separately)

\_\_\_ BP- Cold water By-Pass  
\_\_\_ BRKT- Mounting Bracket

ASSE 1070 Certified



**\*\*NOTE:** For temperatures outside of this valve's stated range, please see our line of bi-metal valves.

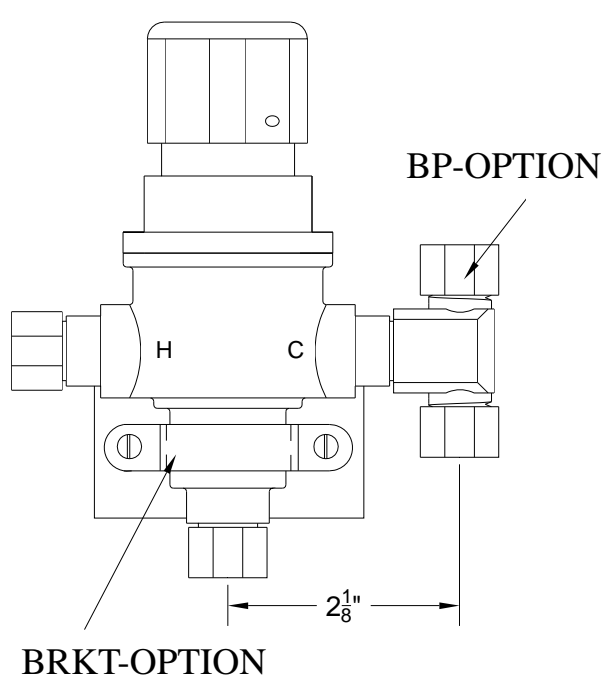
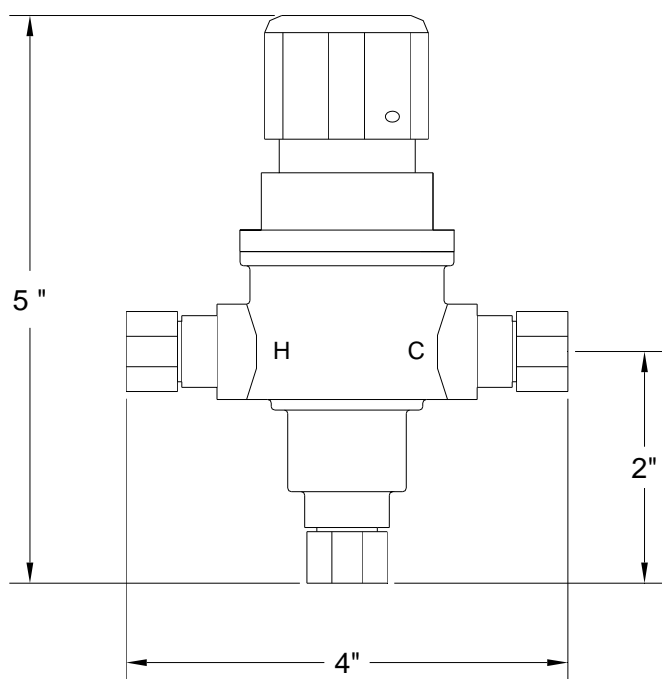


MINIMUM FLOW	PRESSURE DROP						PSI
	5	10	20	30	40	50	
0.5	.35	.70	1.4	2.1	2.8	3.4	BAR
1.9	1.7	2.3	3.0	3.6	4.4	5.0	GPM
	6.4	8.7	11.4	14	17	19	l/min

<b>Engineer's Approval</b>	Job # _____
	Arch/Eng. _____
	Contractor _____

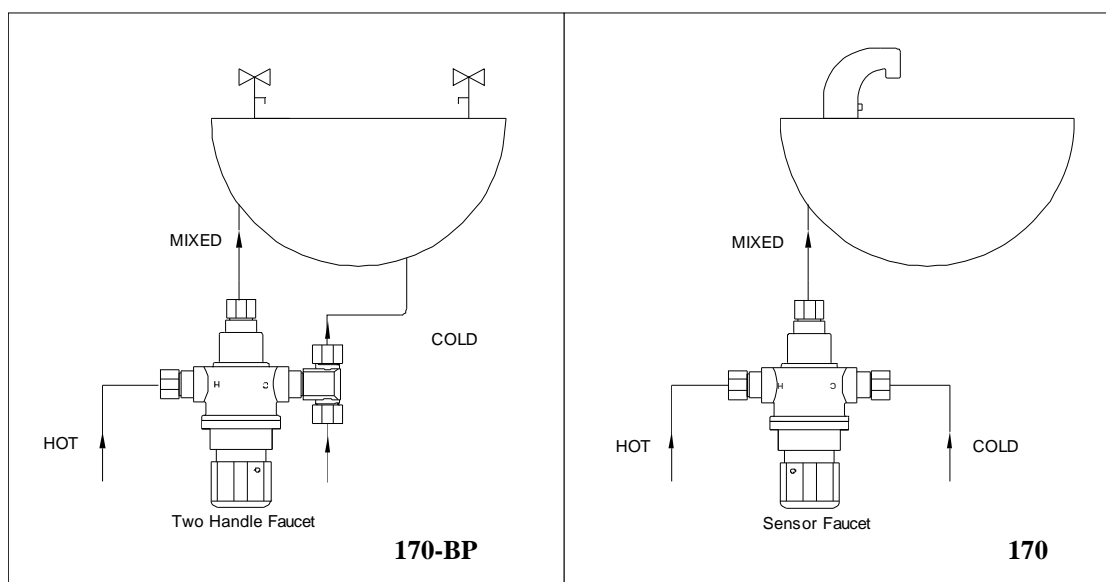


1360 Elmwood Avenue, Cranston, RI 02910 USA  
Phone: 401.461.1200 Fax: 401.941.5310  
Email: [info@leonardvalve.com](mailto:info@leonardvalve.com)  
Web Site: <http://www.leonardvalve.com>



### APPLICATION

The Model 170 is a high performance Temperature Actuated Mixing Valve used to supply single outlets. Can be used to supply one sensor faucet or one two handle manual faucet.



Note: Leonard Valve Company reserves the right of product, or design modifications without notice or obligation.



1360 Elmwood Avenue, Cranston, RI 02910 USA

Phone: 401.461.1200 Fax: 401.941.5310

Email: [info@leonardvalve.com](mailto:info@leonardvalve.com)

Web Site: <http://www.leonardvalve.com>