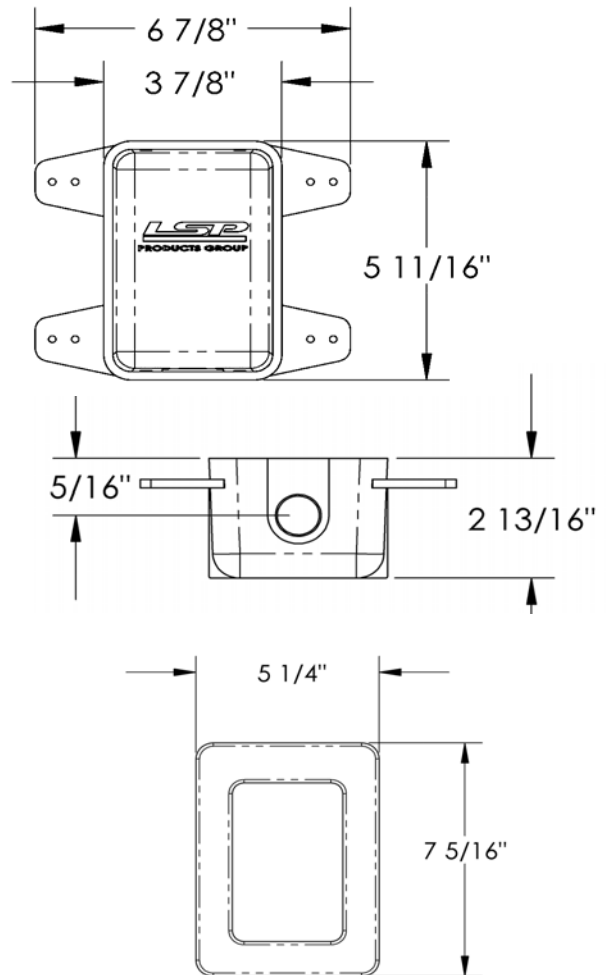


DESIGN FEATURES

- Rounded corners and compact size.
- 1hr and 2hr fire rated.
- Deep faceplate accepts up to two sheets of 5/8" drywall.
- 1/4" thick intumescent pad for fire protection.
- Box constructed of fire resistant PVC
- Mounts on side of stud.
- EZ-Turn Quarter Ball Valve - Durable brass resists cracking/corrosion and allows for fingertip control of water flow.
- Valve has long lasting o-rings and Teflon seats.

COMPLIANCES/LISTINGS

- Warnock Hersey listed 1hr and 2hr:
ASTM E814
CAN/ULC S115
IAPMO/UPC Certified
- Valve also meets or exceeds:
ASME A112.18.1
NSF Standard 61



3689 Arrowhead Drive, Carson City, NV 89706
Phone (800) 854-3215 Fax (800) 243-1777
E-mail sales@lspproducts.com Website www.lspproducts.com

Content matter is subject to change at any time. It is the user's responsibility to ensure the most updated revisions are obtained.
SP/S-2051 (10-08) Rev 2

Product Submittal	
Job Name	
Date	
Part Number	Quantity
Architect	
Contractor	

FIRESTOP *MINI ICEMAKER / GAS BOX* Specification Sheet

PART NUMBER	DESCRIPTION	MASTER CTN QTY
FIRESTOP ICEMAKER BOX		
Without Valve		
OBFS-8000		10/12
With MIP Valve		
OBFS-8010	1/2" MIP x 1/4" Comp	10/12
OBFS-8110	1/2" MIP x 1/4" Comp with Hammer Arrestor	10/12
With CPVC Valve		
OBFS-8020	1/2" CPVC x 1/4" Comp	10/12
OBFS-8120	1/2" CPVC x 1/4" Comp with Hammer Arrestor	10/12
With PEX Valve		
OBFS-8030	1/2" PEX x 1/4" Comp	10/12
OBFS-8031	3/8" PEX X 1/4" Comp	10/12
OBFS-8032	3/8" PEX X 3/8" Comp	10/12
OBFS-8130	1/2" PEX x 1/4" Comp with Hammer Arrestor	10/12
OBFS-8131	3/8" PEX X 1/4" Comp with Hammer Arrestor	10/12
OBFS-8132	3/8" PEX X 3/8" Comp with Hammer Arrestor	10/12
With Wirsbo ProPEX Valve		
OBFS-8040	1/2" Wirsbo x 1/4" Comp	10/12
OBFS-8140	1/2" Wirsbo x 1/4" Comp with Hammer Arrestor	10/12
With Rehau Valve		
OBFS-8050	1/2" Rehau x 1/4" Comp	10/12
OBFS-8051	3/8" Rehau x 1/4" Comp	10/12
OBFS-8052	3/8" Rehau x 3/8" Comp	10/12
OBFS-8150	1/2" Rehau x 1/4" Comp with Hammer Arrestor	10/12
OBFS-8151	3/8" Rehau x 1/4" Comp with Hammer Arrestor	10/12
OBFS-8152	3/8" Rehau x 3/8" Comp with Hammer Arrestor	10/12
FIRESTOP GAS BOX		
GSFS-101	1/2" Valve	10
GSFS-201	3/4" Valve	10
FOR CORRUGATED STAINLESS STEEL TUBING (CSST)		
GSFS-101-FX	1/2" Valve	10
GSFS-201-FX	3/4" Valve	10

* Add a "-T" to the end of any part number for Track Pack (face plates packaged separately)

All boxes are assembled



3689 Arrowhead Drive, Carson City, NV 89706

Phone (800) 854-3215 Fax (800) 243-1777

E-mail sales@lspproducts.com Website www.lspproducts.com

Content matter is subject to change at any time. It is the user's responsibility to ensure the most updated revisions are obtained.

SP/S-2051 (10-08) Rev 2