



JAY R. SMITH MFG. CO.
 DIVISION OF SMITH INDUSTRIES, INC.
 POST OFFICE BOX 3237
 MONTGOMERY, ALABAMA 36109-0237 (USA)
 TEL: 334-277-8520 FAX: 334-272-7396 www.jrsmith.com



MEMBER OF:

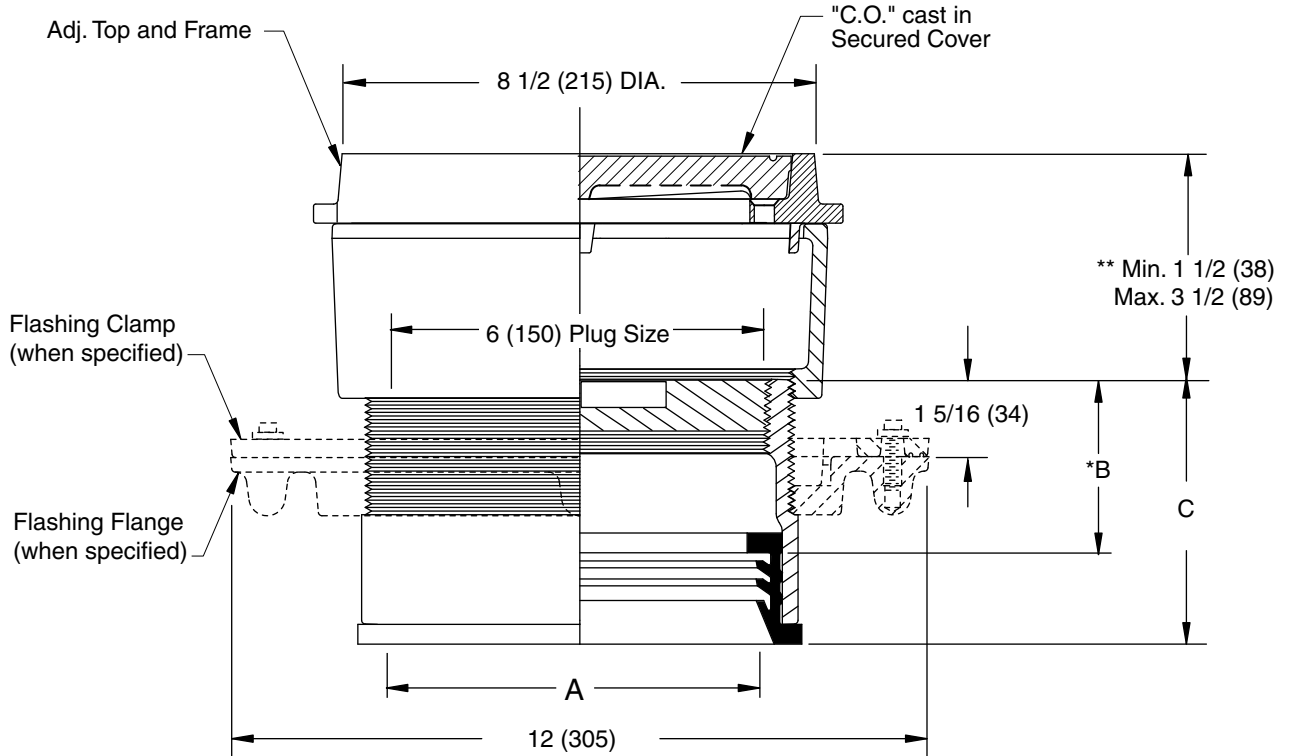


LOCATION

FLOOR CLEANOUTS WITH "TWIS-TO-FLOOR®" ADJUSTABLE TOPS FOR UNFINISHED AREAS

ROUND EXTRA HEAVY DUTY CAST IRON TOP

FUNCTION: Used in floors and areas where appearance of Cast Iron is satisfactory. Will withstand heavy load traffic.



SPEEDI-SET OUTLET ▲

"A" (Pipe Size) = 06(150) & 08(200)

| A SIZE | B | C |
|-----------|------------|--------------|
| 06(150) | *3(76) | 4 9/16(117) |
| 08(200) | *3 1/4(83) | 4 13/16(121) |

▲ Available in "L" Service Weight, "LXH" Extra Heavy or "LPVC" PVC or ABS. "LPVC" applicable to 06(150) Pipe Size only.

* This Dimension to Internal Stop of Speedi-Set Gasket.

** When Flange-F is specified Min. 1 1/2 (38) becomes 2 (51)

"TWIS-TO-FLOOR®" ADJUSTMENT

SPEEDI-SET OUTLET ▲

☐ Fig. 4233L.....Taper Thread - Bronze Plug

REGULARLY FURNISHED:

Duco Cast Iron Cleanout with Taper Thread Bronze Plug and Round Adjustable Scoriated Secured Cast Iron Top.

VARIATIONS:

- ☐ Flashing Flange -F
- ☐ Flange with Flashing Clamp -F-C
- ☐ Vandal Proof Top -U

OPTIONAL MATERIALS:

- ☐ Galvanized Cast Iron -G
- ☐ Ductile Iron Cover-M

NOTE: Dimensions shown in parentheses are in millimeters.

DRAWING NUMBER
S4231BS

SIZE
A

SCALE:
NONE

DATE:
5-5-06

APPROVED BY:
CEL

CHECKED BY:
CL

DRAWN BY:
RN

FIGURE
NUMBER
4233

WE CAN ASSUME NO RESPONSIBILITY FOR USE OF SUPERSEDED OR VOID DATA

| REV. | DATE | DESCRIPTION | BY | CKD. BY |
|------|------|-------------|----|---------|
| | | | | |

| WEIGHT POUNDS | VOLUME CUBIC FEET |
|------------------|----------------------|
| | |

| FIGURE NUMBER |
|---------------|
| 4233 |