

JCM 410 Large Diameter and Non-Standard Contour Pipe Repair Sleeve

The JCM 410 Repair Sleeve repairs large pipe in systems which require high working pressure capability. Engineered specifically for the internal pressure forces involved with large diameter pipe and its working characteristics. The JCM 410 Sleeve is available in pipe sizes up through 120" and larger and provides several design options for the specific application.

Minimal Pipe Excavation - the 410 sleeve requires limited pipe exposure around the damaged area. Full section joint exposure is eliminated.

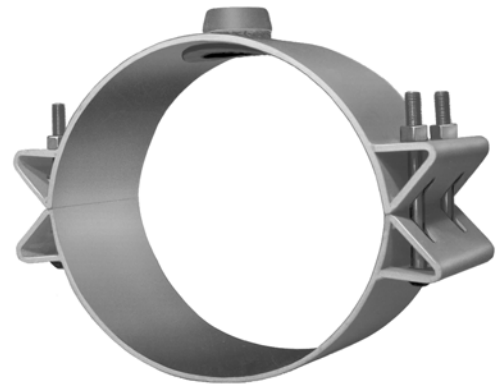
Reinforcement Pipe Wall - strong and lightweight steel directly reinforces the pipe wall on the circumference of the pipe.

Heavy Duty Design - large fitting components, spacious bolt holes and heavy hardware combine to make installations in less than ideal environments easy and fast. The 410 especially lends itself for easy underwater and low visibility applications.

Maximum Gasket Sealing - heavy duty bolts and material provides high levels of bolt torque which is transferred directly to gasket sealing compression. Higher bolt torques maintain greater working pressures.

Low Profile Stance - the hydro-mechanical lip gasket is trapped both internally and externally in a recessed groove that provides a low profile stance on the pipe eliminating the chance of gasket displacement or "blow-out" in high pressure applications.

Availability - The JCM 410 Repair Sleeve is available from JCM on both an emergency and a contingency basis. Timely delivery and installation prevents extensive pipe damage, content loss and environmental violations.



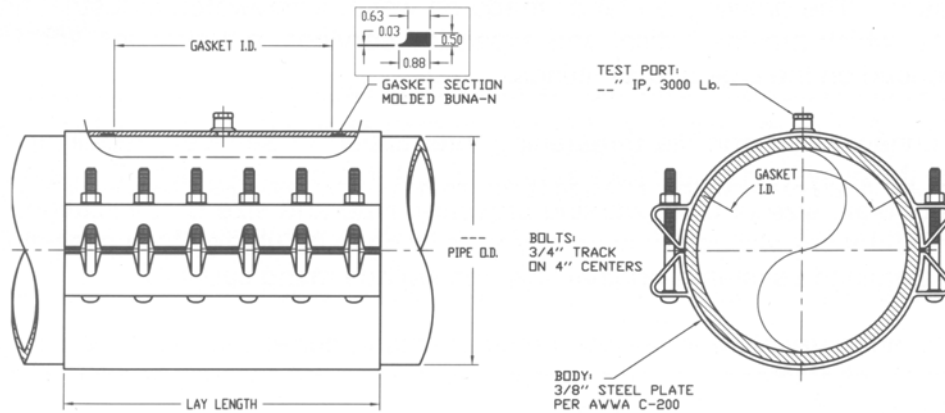
JCM 410 Large Diameter Repair Sleeve Offers Application Specific Options

The JCM 410 Repair Sleeve is recommended for applications on large diameter pipe, high working pressure systems and critical service applications. The 410 provides a variety of fabrication options for consideration such as space limitations, environment and service requirements. These special fabrication options include:

- Laying Length
- Pipe Range
- Gasket
- Coating
- Body Material
- Damaged area accommodation
- Hardware

JCM 410 Large Diameter and Non-Standard Contour Pipe Repair Sleeve

JCM provides various options for the JCM 410 Large Diameter Pipe Repair Sleeve. For special engineered fittings, contact the JCM Technical Services Sales Team and provide the application parameters. JCM will provide recommendations for the application and custom design the fitting to accommodate those parameters.



JCM 410 Large Diameter Repair Sleeve - Standard Design

HOW TO ORDER

For pricing and engineering, the following information must be furnished:

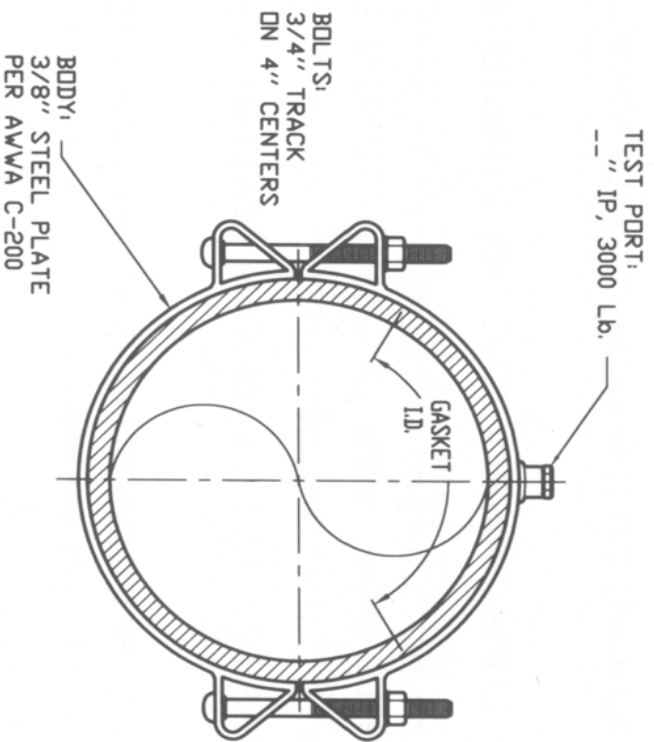
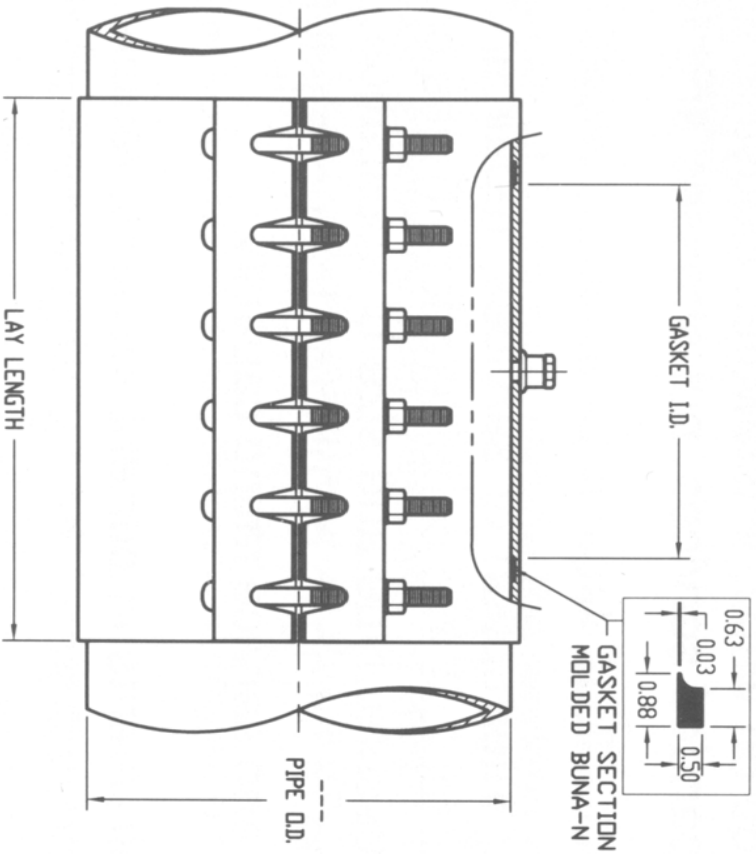
Type of Pipe	Dimension of Damaged Area
Pipe Outside Diameter	Space Limitations
Line Content	Coating Requirements
Line Working Pressure	Optional Material Requirements

JCM 410 Fabricated Repair Sleeve - Standard Fitting Typical Specification

Repair fittings shall be the high strength type fabricated of ASTM 283 Grade C Steel or ASTM A-36, which conforms to and reinforces the pipe. Sleeve shall be minimum 8" wide and be sized to fit and reinforce the pipe circumference. Sleeve repair area shall have a minimum 3/4" wide Buna-N gasket recessed in a machined groove. Repair fitting shall have a 3/4" outlet for venting and test purposes. Repair fitting shall be furnished with a corrosion resistant shop coat primer with high strength, low alloy corrosion resistant bolts and nuts (AWWA C-111, ANSI 21.11). Repair Sleeves shall be ANSI/NSF Standard 61 Certified.

JCM 410 Fabricated Repair Sleeve - Material Specifications

- BODY:** ASTM 283 Grade C or ASTM A-36 Steel. Option - All Stainless Steel Fabrication
- BOLTS:** Corrosion resistance, high strength, low alloy AWWA C-111, ANSI 21.11. Optional Stainless Steel.
- GASKET:** Compounded for use with water, salt solutions, mild acids and bases.
- COATING:** Heavy coat of corrosion resistant shop coat primer which is an excellent base for bitumastic coal tar or similar field coatings. Optional Fusion Epoxy Coating available.



JCM Industries, Inc.
 P. O. Box 1220
 Nash, TX 75569-1220
 Phone 800-527-8482 or 903-832-2581
 Technical and Engineered Sales

JCM 410 Fabricated Repair Sleeve