

FIBERGLASS, LARGE - Hot Box ®



We categorize our enclosures intended for BF installations of 3" through 10" as large fiberglass enclosures. There are two choices in the large fiberglass category: DESIGNER Series™ Modular fiberglass and DESIGNER Series™ LOW PROFILE Series™ fiberglass flip-top. Insulation is spray-applied polyisocyanurate foam (structural unicellular insulation) – 1 ½" thick to provide a minimum R value of 8. All insulated HOT BOX® products are designed to protect to -30 F when installed with heat.

- All DESIGNER Series™ enclosures feature designer inlays for strength and appearance + gas spring lid supports.
- DESIGNER Series™ Modular fiberglass enclosures feature front and rear access doors mounted on "lift-off" hinges that are lockable from the inside.
- All Hot Box ® products are priced and furnished with heat (unless specified otherwise, in which case they become a LOK BOX™).
- DESIGNER Series™ Low Profile enclosures are also available without insulation. See chart below for details.



Typical DESIGNER Series™



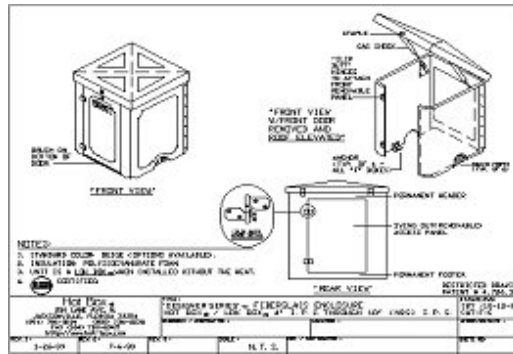
HB10FEM DESIGNER Series™



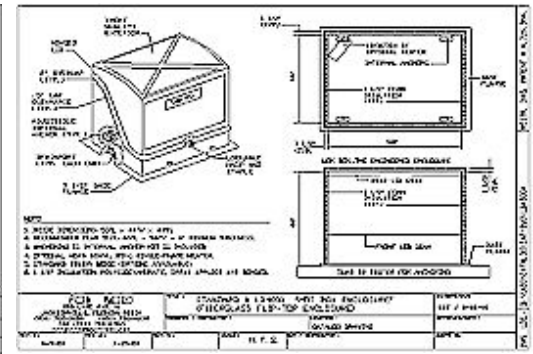
LOW PROFILE Series™



LOW PROFILE Series™



Designer Series Lok Box



LOW PROFILE Series™

HOT BOX® - DESIGNER Series™ • LOW PROFILE Series™ • Insulated Flip-Top Fiberglass Enclosures • ASSE 1060 Certified

Unit No.	Heat	Inside Dimensions	Pad Size	Approx. Shipping Wt.
HB3000	1000W	45"L x 35"W x 35"H	57 x 47	150lbs.
HB4000	1000W	53"L x 44"W x 44"H	65 x 56	300lbs.

HOT BOX® - DESIGNER Series™ • LOW PROFILE Series™ • Non-Insulated Flip-Top Fiberglass Enclosures

Unit No.	Approximate Inside Dimensions	Pad Size	Approx. Shipping Wt.
LBN13000	48"L x 38"W x 36.5"H	57 x 47	135lbs.
LBN14000	56"L x 47"W x 45.5"H	65 x 56	270lbs.

HOT BOX® • DESIGNER Series™ • Modular Fiberglass Enclosures • ASSE 1060 Certified

HB4FEM	1000W	41"L x 41"W x 45"H	53 x 53	210lbs.
HB6FEM	1500W	47"L x 47"W x 49"H	57 x 57	240lbs.
HB8FEM	1500W	53"L x 53"W x 56"H	63 x 63	300lbs.
HB10FEM	2000W	62"L x 54"W x 56"H	62 x 54	390lbs.

HOT BOX® "THE ENGINEERED ENCLOSURE"®

250 Lane Ave. N., Jacksonville, Florida 32254-2815

Phone (904) 786-0204 - Toll Free (800) 736-0238

Fax (904) 783-6965

US Patent Nos. 33,523 & DES 412,366