


Position	Count	Description	Unit price
	1	<p>UP 15-18 B5/LC</p>  <p>Product photo could vary from the actual product</p> <p>Product No.: 59896211</p> <p>The pump is of the canned rotor type, i.e. pump and motor form an integral unit without shaft seal and with only two gaskets for sealing. The bearings are lubricated by the pumped liquid. The pump is characterized by:</p> <ul style="list-style-type: none"> * Ceramic shaft and radial bearings. * Carbon axial bearing. * Stainless steel rotor can and bearing plate. * Corrosion-resistant impeller, Composite, PES. * Bronzepump housing. <p>The motor is a 1-phase motor. No additional motor protection is required.</p> <p>Liquid:</p> <p>Liquid temperature range: 35.6 .. 230 °F Liquid temp: 158 °F Density: 61.01 lb/ft³</p> <p>Technical:</p> <p>Approvals on nameplate: UL, CSA</p> <p>Materials:</p> <p>Pump housing: Bronze DIN W.-Nr. 2.1176.01</p> <p>Impeller: Composite, PES</p> <p>Installation:</p> <p>Maximum ambient temperature: 104 °F Ambient max at 176°F liquid: 176 °F Maximum operating pressure: 145 psi Flange standard: USA Sweat Type of connection: Bronze Sweat Pipe connection: 1/2" Sweat Pressure stage: 10 Port-to-port length: 5 in</p> <p>Electrical data:</p> <p>Number of poles: 2</p>	On request



Company name: Mountain States Supply

Created by: -

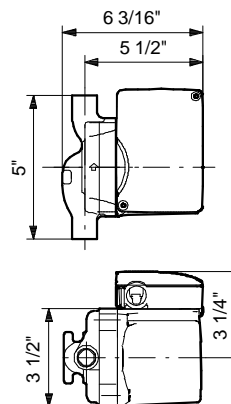
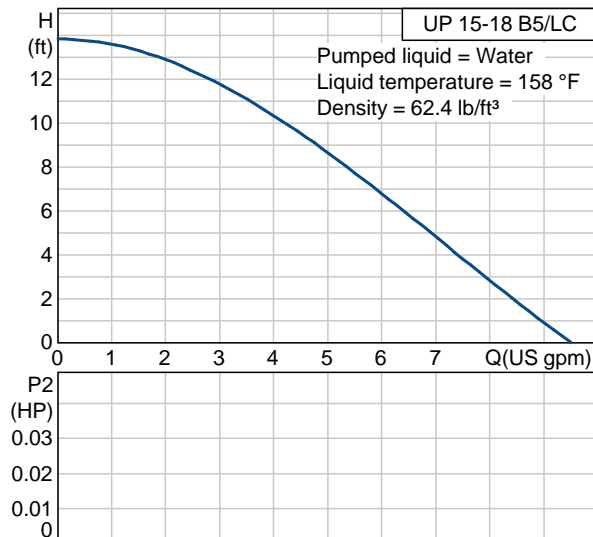
Phone: -

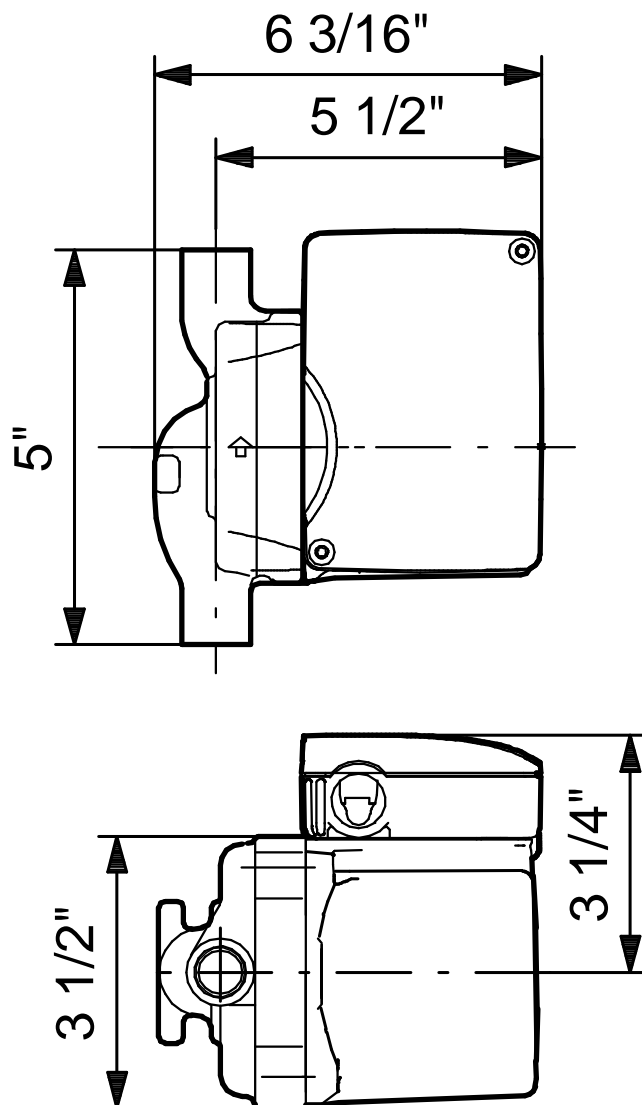
Fax: -

Date: -

Position	Count	Description	Unit price
		Max. power input: 85 W Rated power - P2: 0.04 HP Main frequency: 60 Hz Rated voltage: 1 x 115 V Current in speed 3: 0.74 A Capacitor size - run: 10 µF/180 V Insulation class (IEC 85): F Others: Gross weight: 6.5 lb	

Description	Value
Product name:	UP 15-18 B5/LC
Product No.:	59896211
EAN:	5700392936363
Technical:	
Speed Number:	1
Max flow:	14.5 US gpm
Head max:	13.8 ft
Approvals on nameplate:	UL, CSA
Materials:	
Pump housing:	Bronze
Impeller:	DIN W.-Nr. 2.1176.01 Composite, PES
Installation:	
Maximum ambient temperature:	104 °F
Ambient max at 176°F liquid:	176 °F
Maximum operating pressure:	145 psi
Flange standard:	USA Sweat
Type of connection:	Bronze Sweat
Pipe connection:	1/2" Sweat
Pressure stage:	10
Port-to-port length:	5 in
Liquid:	
Liquid temperature range:	35.6 .. 230 °F
Liquid temp:	158 °F
Density:	61.01 lb/ft³
Electrical data:	
Number of poles:	2
Max. power input:	85 W
Rated power - P2:	0.04 HP
Main frequency:	60 Hz
Rated voltage:	1 x 115 V
Current in speed 3:	0.74 A
Capacitor size - run:	10 µF/180 V
Insulation class (IEC 85):	F
Motor protection:	CONTACT
Thermal protec:	internal
Controls:	
Pos term box:	9H
Others:	
Gross weight:	6.5 lb



59896211 UP 15-18 B5/LC 60 Hz

Note! All units are in [mm] unless others are stated.

Disclaimer: This simplified dimensional drawing does not show all details.