



# Griffin Pipe Products Co.

## Technical Data Sheet No. 101

ONE OF THE **Amsted**  
INDUSTRIES

4/1/95

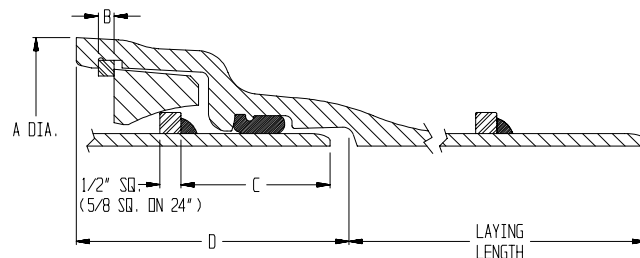
## Restrained Joint Ductile Iron Pipe

### SNAP-LOK™

#### Specifications

Pipe shall be ductile iron manufactured in accordance with the requirements of ANSI/AWWA C151/A21.51. Push-on joints for such pipe shall be in accordance with ANSI/AWWA C111/A21.11. Pipe shall be Griffin SNAP-LOK or equal. Pipe thickness shall be designed in accordance with ANSI/AWWA C150/A21.50 and shall be based on laying conditions and internal pressures as specified in the project plans.

Fittings shall be ductile iron and in accordance with applicable requirements of either ANSI/AWWA C153/A21.53 or ANSI/AWWA C110/A21.10 and shall utilize Griffin BOLT-LOK Pipe spigots for restraint when required.



#### Dimensions and Weights

Size	A Dia.	B	C	D	Laying Lgth.*	Defl. Angl	Add'l† Weight
4	11.44	.375	3.500	6.51	19'11"	4°	32
6	13.97	.375	4.000	7.19	19'10"	4°	47
8	16.44	.500	4.125	7.25	19'10"	4°	75
10	18.75	.500	4.250	7.50	19'10"	4°	88
12	20.96	.500	5.250	8.88	19'9"	3°	113
14	23.22	.500	5.250	8.95	19'8"	3°	134
16	25.72	.625	5.375	9.07	19'8"	3°	158
18	27.85	.625	6.000	9.88	19'7"	3°	216
20	32.54	.625	6.250	10.58	19'6"	3°	303

Dimensions in Inches

\* SNAP-LOK and either SNAP-LOK, BOLT-LOK or plain spigot end.

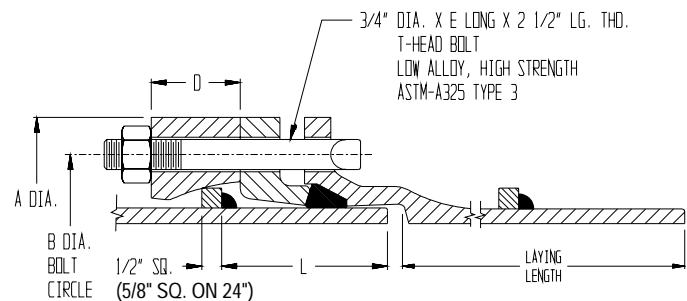
† Additional weight including accessories over class 56 pipe. Lighter classes will be slightly heavier.

SNAP-LOK™ and BOLT-LOK™ are trademarks of Griffin Pipe Products Co.

### BOLT-LOK™

Restrained joints for pipe and fittings shall be designed for a working pressure of 350 psi in sizes 4" through 14" and a minimum of 250 psi for sizes 16" through 24". Joint shall be capable of being deflected, after assembly, 4° in 4" through 12" sizes and 2° in 14" through 24" sizes.

Pipe and fittings shall have cement mortar lining and seal coating, where applicable, in accordance with ANSI/AWWA C104/A21.4.



Size	A Dia.	B Dia.	D	Bolt Lgth E	No. of Bolt	L	Laying Lgth.**	Defl. Angle	Add'l‡ Weight
4	9.38	7.50	2.00	6	4	3.75	18'0"	4°	36
6	11.38	9.50	2.00	6	6	4.00	20'0"	4°	49
8	13.63	11.75	2.25	6	6	4.00	20'0"	4°	69
10	15.88	14.00	2.25	6	8	4.00	20'0"	4°	86
12	18.19	16.25	2.50	7	8	4.00	20'0"	4°	107
14	20.50	18.75	2.50	7	10	5.25	20'0"	3°	134
16	22.75	21.00	2.63	7	12	5.25	20'0"	3°	163
18	25.75	23.25	2.63	7	12	5.50	20'0"	2½°	187
20	28.25	25.50	2.88	8	14	5.75	20'0"	2½°	245
24	32.50	30.00	3.00	8	16	5.75	20'0"	2°	302

Dimensions in Inches

\*\* MJ socket and either SNAP-LOK or plain spigot end.

‡ Additional weight of accessories over MJ pipe. The BOLT-LOK system is used primarily to provide restraint at fittings and appurtenances.

#### Plants and Regional Sales Offices:

Council Bluffs, Iowa 51501  
2601 Ninth Avenue  
712/325-5131 Fax 712/325-5139

Florence, New Jersey 08518  
1100 West Front Street  
609/499-1400 1-800-272-2006  
Fax 609/499-4868

Lynchburg, Virginia 24505  
Adams St. - Upper Basin, Box 740  
804/522-4742 Fax 804/522-4739