



VITREOUS CHINA

URINAL  
27-750

LAVATORIES

TOILETS

BIDETS / URINALS

CAST IRON



## CLINTON™ "Space Saver" Siphon Jet/Top Spud Wall Hung

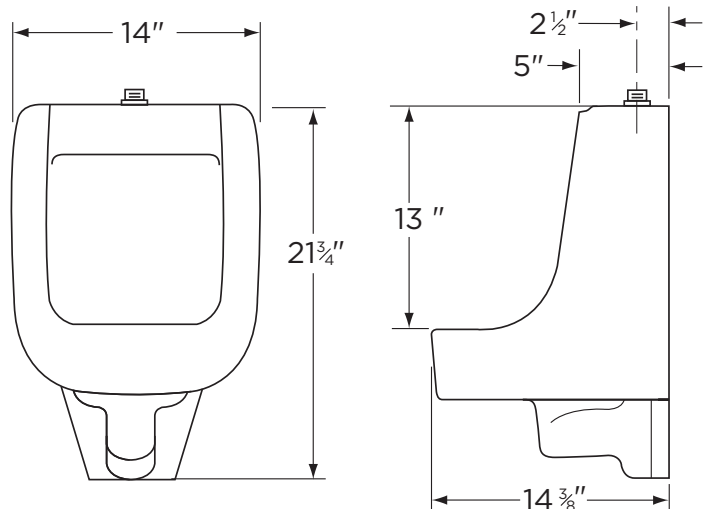
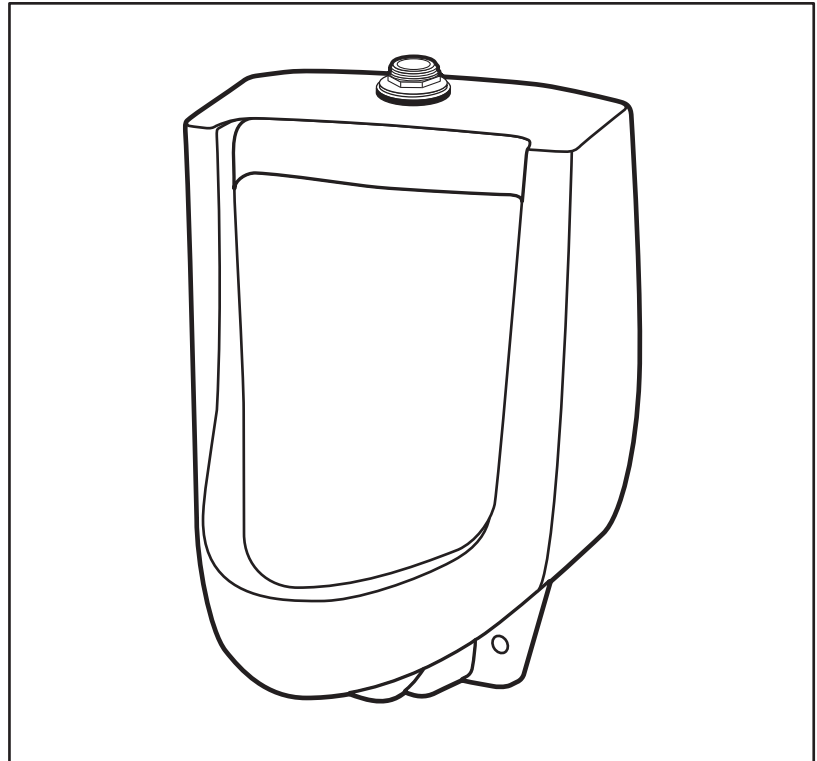


### Features:

- Low Consumption 1.0 gpf (3.8 Lpf)
- Minimum Wall Space
- Dual Hangers
- For Exposed Flushometer (top spud)  
1" x 3/4" Inlet
- 2" S.P.S. Female Outlet Connection  
Supplied
- ADA Compliant

### Dimensions:

Height ..... 21 3/4"  
Width ..... 14"  
Depth ..... 14 3/8"  
Inlet ..... 3/4"  
Outlet ..... 2"  
Shipping Weight ..... 41 lbs



RECOMMENDED STATIC WATER  
PRESSURE FOR PLUMBING  
FIXTURES IS 20 - 80 PSI STATIC  
PER ANSI STANDARDS A112.19.2  
APPENDIX B

THIS FIXTURE QUALIFIES ACCORDING  
TO ASME TEST PROCEDURES AS A  
LOW CONSUMPTION URINAL WITH  
AN AVERAGE CONSUMPTION PER  
FLUSH OF 1.0 gpf (3.8 Lpf) OR LESS.



[www.gerberonline.com](http://www.gerberonline.com)

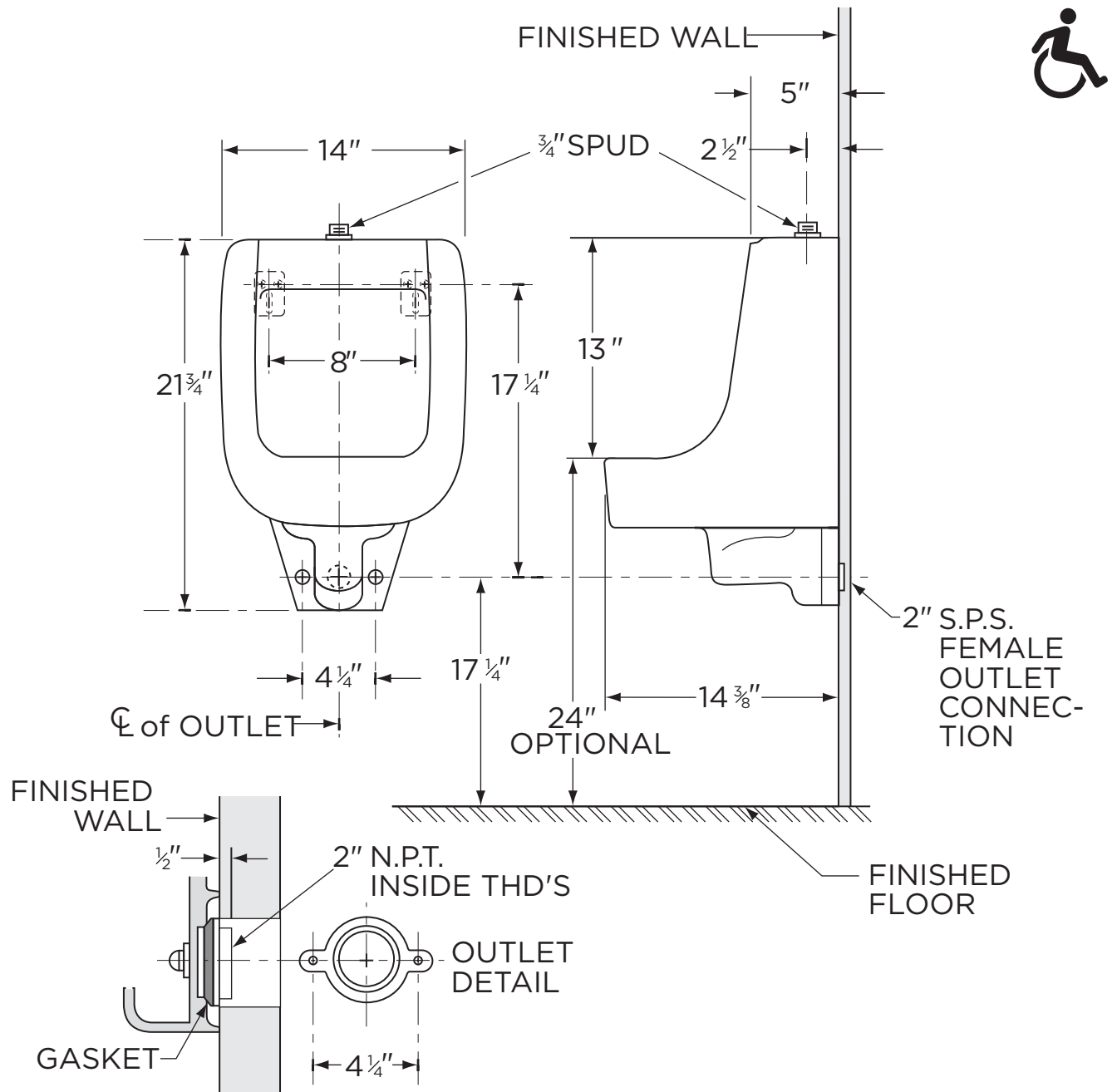
Job Name	
Date	
Model Specified	
Quantity	
Customer	
Contractor	
Architect/engineer	



CLINTON™

27-750

# Low Consumption Siphon Jet Top Spud Wall Hung Urinal



## NOTES:

All dimensions are in inches. Use flush valve MFR'S recommended rough-in.

Recommended static water pressure for plumbing fixtures is 20-80 psi static per ANSI standards A112.19.2 Appendix B.

Illustrations may not be drawn to scale.

## PLUMBERS NOTE:

Provide suitable reinforcement for all wall supports.

## IMPORTANT:

Dimensions of fixtures are nominal and may vary within the range of tolerances established by ASME Standard A 112.19.2.

THIS FIXTURE QUALIFIES ACCORDING TO ASME TEST PROCEDURES AS A LOW CONSUMPTION URINAL WITH AN AVERAGE CONSUMPTION OF 1.0 gpf (3.8 Lpf) OR LESS.