



GERBER

VITREOUS CHINA
URINAL
HE-27-731

LAVATORIES

TOILETS

BIDETS / URINALS

CAST IRON



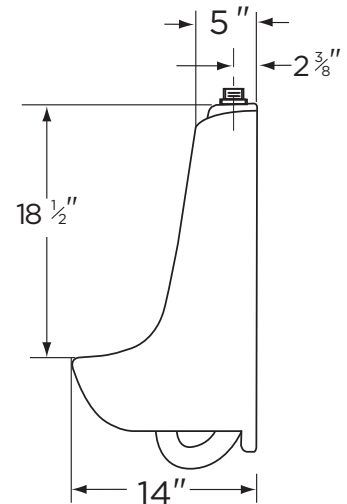
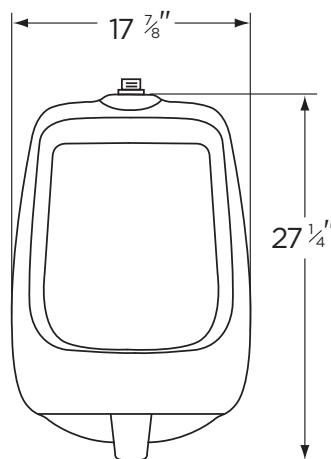
NORTH POINT™ PINT Top Spud Urinal (Half Stall)

Features:

- High Efficiency Pint Urinal 0.125 gpf (0.5 Lpf)
- Half Stall Size
- Flushing Rim
- Washout Flush Action
- Elongated Rim (14" from finished wall)
- 3/4" Inlet Top Spud for Exposed Flushometer
- Outlet Connection Threaded 2" Inside (NPTF)
- Dual Wall Hangers
- ADA compliant

Dimensions:

Height27 1/8"
Width17 7/8"
Depth14"
Inlet..... 3/4"
Outlet.....2"
Shipping Weight57 lbs



RECOMMENDED STATIC WATER
PRESSURE FOR PLUMBING
FIXTURES IS 20 - 80 PSI STATIC

THIS FIXTURE QUALIFIES ACCORDING
TO ASME TEST PROCEDURES AS A
HIGH EFFICIENCY URINAL WITH AN
AVERAGE CONSUMPTION OF 0.5 gpf
(1.9 Lpf) OR LESS.

HIGH EFFICIENCY URINAL
HEU

www.gerberonline.com

Job Name	
Date	
Model Specified	
Quantity	
Customer	
Contractor	
Architect/engineer	

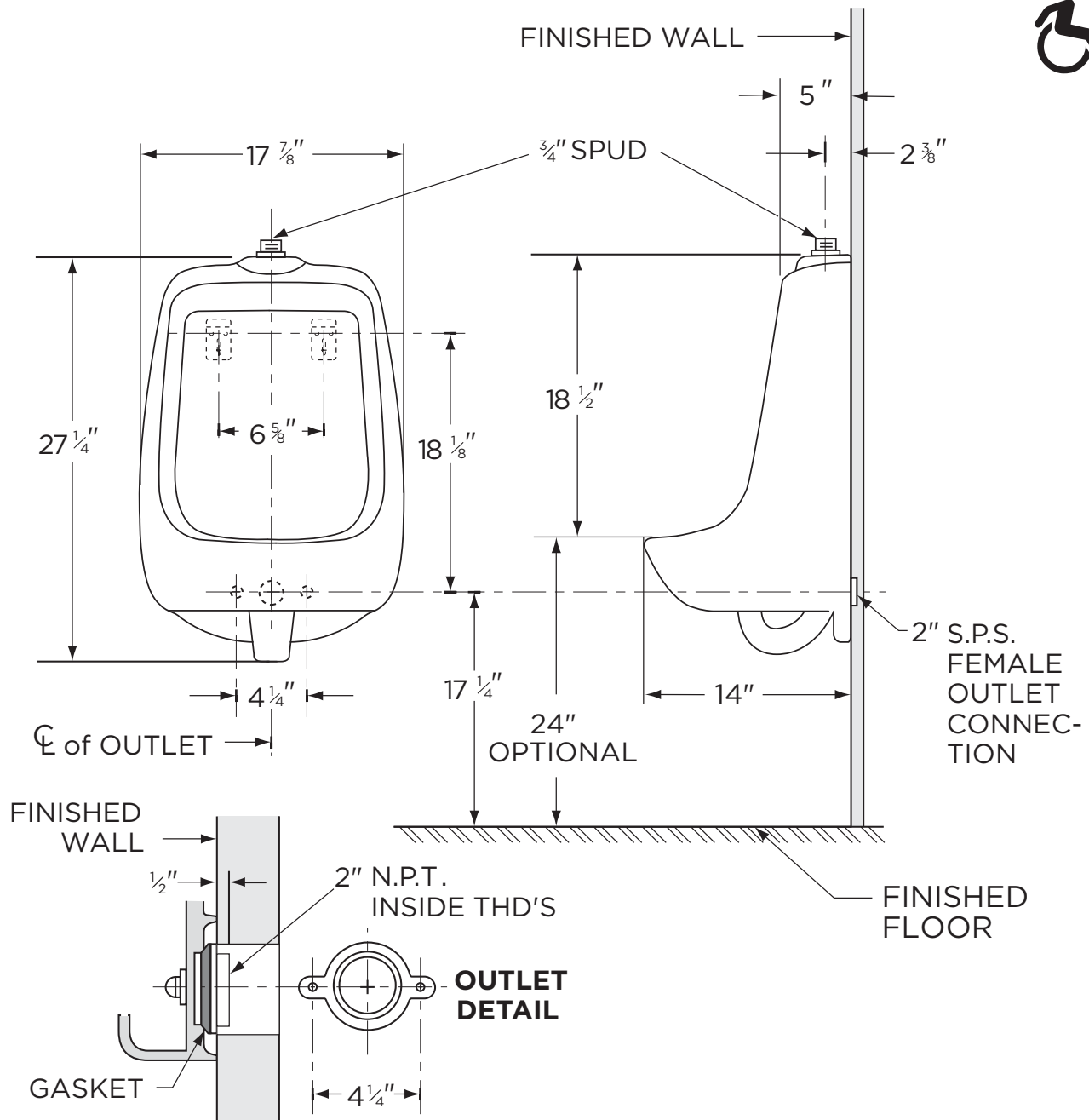


GERBER

0.125 gpf (0.5 Lpf) North Point™

HE-27-731

High Efficiency Top Spud Urinal



NOTES:

All dimensions are in inches.
Illustrations may not be drawn to scale.
Urinal will comply with the Americans with Disabilities Act when installed per the requirements of the Accessibility Guidelines, Section 605 Urinal of the Act.

IMPORTANT:

Dimensions of fixtures are nominal and may vary within the range of tolerances established by ASME Standard A 112.19.2.