



GERBER

VITREOUS CHINA

Urinal

HE-27-730

LAVATORIES

TOILETS

BIDETS / URINALS

CAST IRON



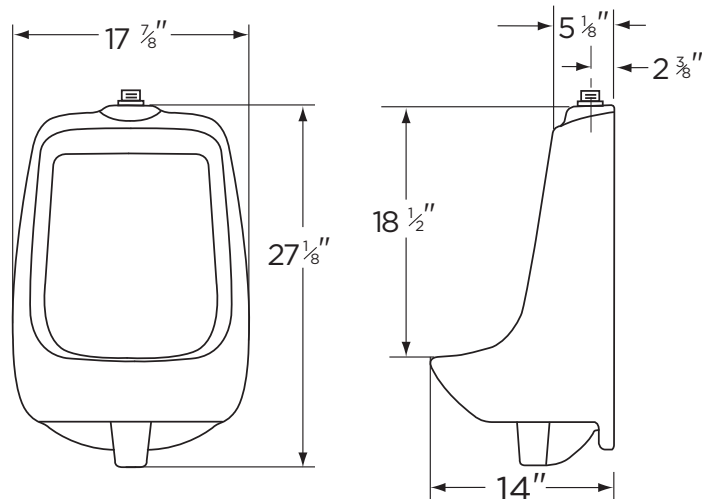
North Point™ Top Spud Urinal

Features:

- High Efficiency Urinal 0.5 gpf (1.9 Lpf)
- Half Stall Size
- Flushing Rim
- Washout Flush Action
- Elongated Rim (14" from finished wall)
- 3/4" Inlet Top Spud for Exposed Flushometer
- Outlet Connection Threaded 2" Inside (NPTF)
- Dual Wall Hangers
- ADA compliant

Dimensions:

Height 27 1/8"
 Width 17 7/8"
 Depth 14"
 Inlet 3/4"
 Outlet 2"
 Shipping Weight 52 lbs



RECOMMENDED STATIC WATER
 PRESSURE FOR PLUMBING
 FIXTURES IS 20 - 80 PSI STATIC
 PER ANSI STANDARDS A112.19.2
 APPENDIX B

THIS FIXTURE QUALIFIES
 ACCORDING TO ASME TEST
 PROCEDURES AS A HIGH-
 EFFICIENCY URINAL WITH AN
 AVERAGE CONSUMPTION OF 0.5
 gpf (1.9 Lpf) OR LESS.

HIGH EFFICIENCY URINAL
HEU



www.gerberonline.com

Job Name	
Date	
Model Specified	
Quantity	
Customer	
Contractor	
Architect/engineer	

