



# GERBER

VITREOUS CHINA

Urinal

**27-730**

LAVATORIES

TOILETS

BIDETS / URINALS

CAST IRON



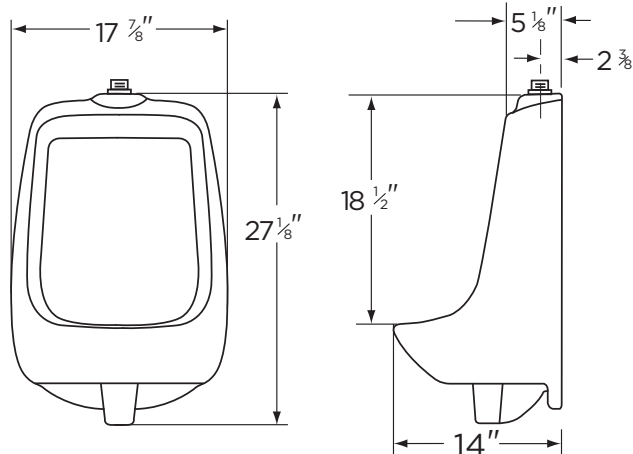
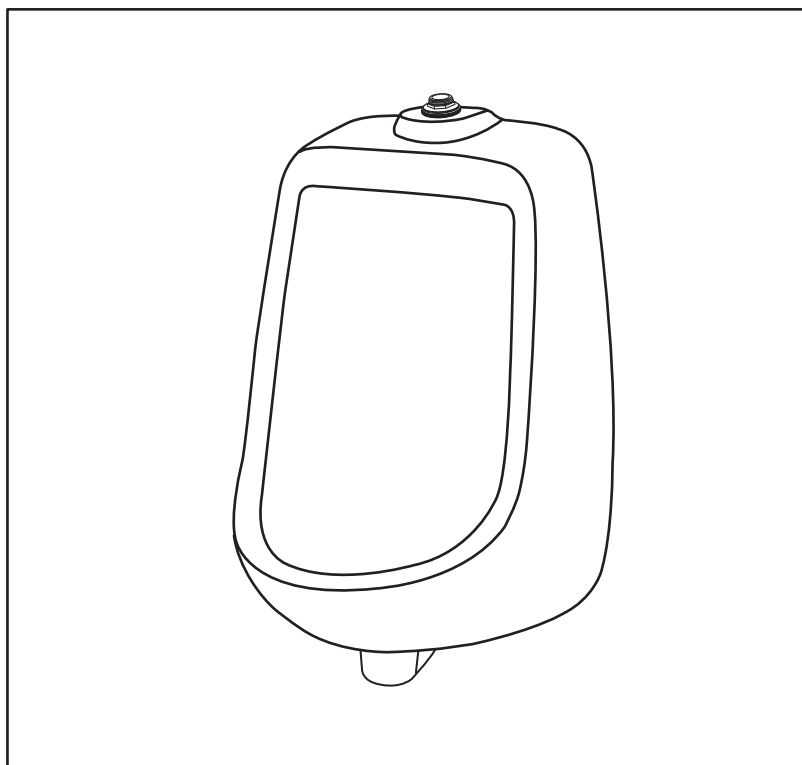
## North Point™ Top Spud Urinal

### Features:

- Low Consumption 1.0 gpf (3.8 Lpf)
- Half Stall Size
- Flushing Rim
- Washout Flush Action
- Elongated Rim (14" from finished wall)
- 3/4" Inlet Top Spud for Exposed Flushometer
- Outlet Connection Threaded 2" Inside (NPTF)
- Dual Wall Hangers
- ADA compliant

### Dimensions:

Height ..... 27 1/8"  
Width ..... 17 7/8"  
Depth ..... 14"  
Inlet ..... 3/4"  
Outlet ..... 2"  
Shipping Weight ..... 52 lbs



RECOMMENDED STATIC WATER PRESSURE FOR PLUMBING FIXTURES IS 20 - 80 PSI STATIC PER ANSI STANDARDS A112.19.2 APPENDIX B

THIS FIXTURE QUALIFIES ACCORDING TO ASME TEST PROCEDURES AS A LOW CONSUMPTION URINAL WITH AN AVERAGE CONSUMPTION OF 1.0 gpf (3.8 Lpf) OR LESS.



[www.gerberonline.com](http://www.gerberonline.com)

Job Name	
Date	
Model Specified	
Quantity	
Customer	
Contractor	
Architect/engineer	

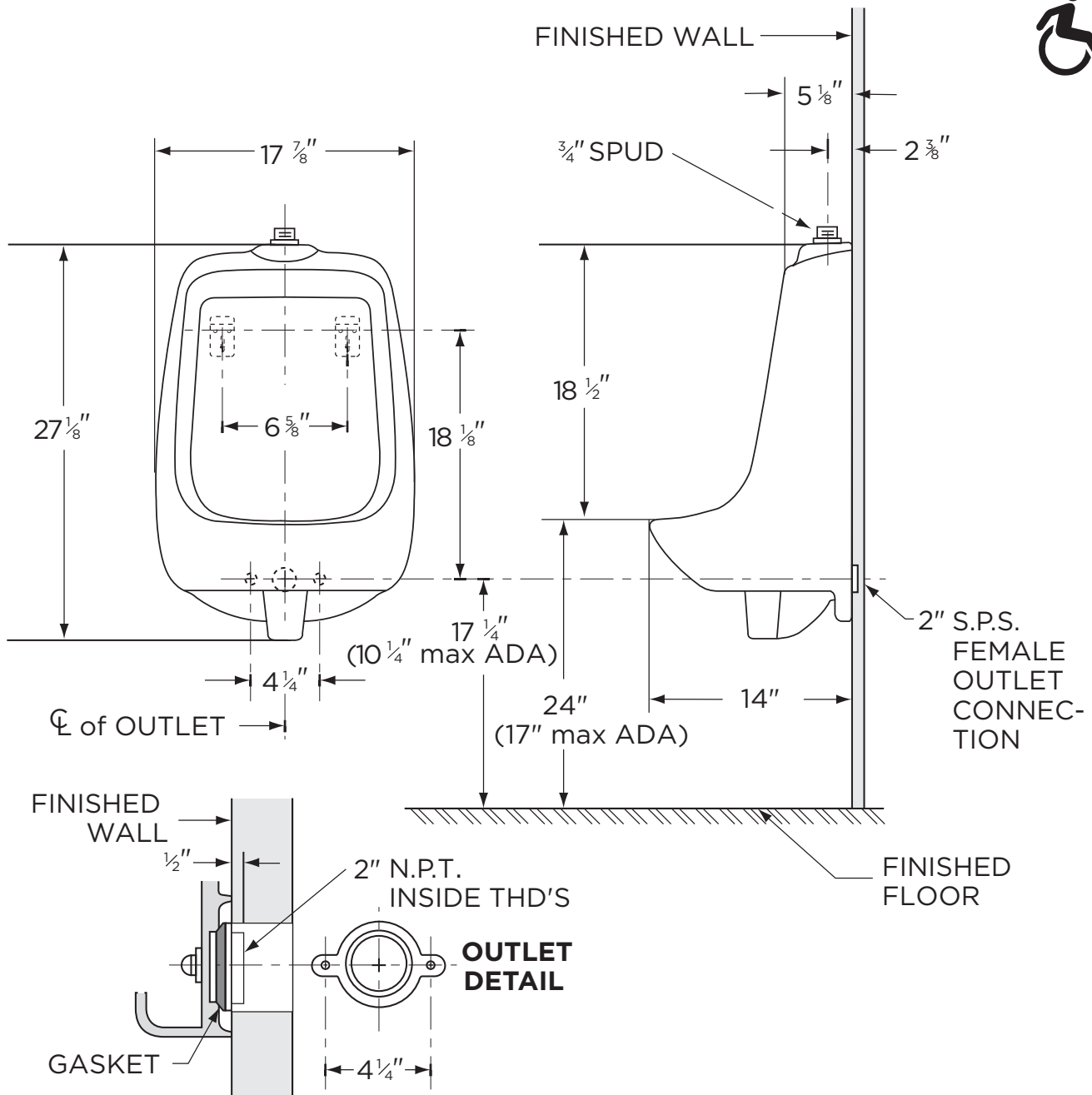


# GERBER

North Point™

27-730

Low Consumption 1.0 gpf (3.8 Lpf) Top Spud Urinal



**NOTES:**

All dimensions are in inches. Use flush valve MFR'S recommended rough-in.

Recommended static water pressure for plumbing fixtures is 20-80 psi static per ANSI standards A112.19.2 Appendix B.

Illustrations may not be drawn to scale.

**PLUMBERS NOTE:**

Provide suitable reinforcement for all wall supports.

**IMPORTANT:**

Dimensions of fixtures are nominal and may vary within the range of tolerances established by ASME Standard A 112.19.2. THIS FIXTURE QUALIFIES ACCORDING TO ASME TEST PROCEDURES AS A LOW CONSUMPTION URINAL WITH AN AVERAGE CONSUMPTION OF 1.0 gpf (3.8 Lpf) OR LESS.