



Tub/Shower Fitting

**Features:**

- Traditional styling
- Shower at 2.5 gpm @ 80 psi
- Chrome and Brushed Nickel finishes
- Fit on Gerber *PLUS*™ washerless valves GS-315 series and washerless valves GS-303, GS-305
- Combination IPS / sweat connections
- Single function showerhead
- Back to back capability
- Diverter tub spout in thread/slip combination
- Fully ADA compliant
- Limited Lifetime Warranty

Standards & Certifications:

- ASME A112.18.1M
- ANSI A117.1
- IAPMO/cUPC
- Mass Code

Catalog Numbers:

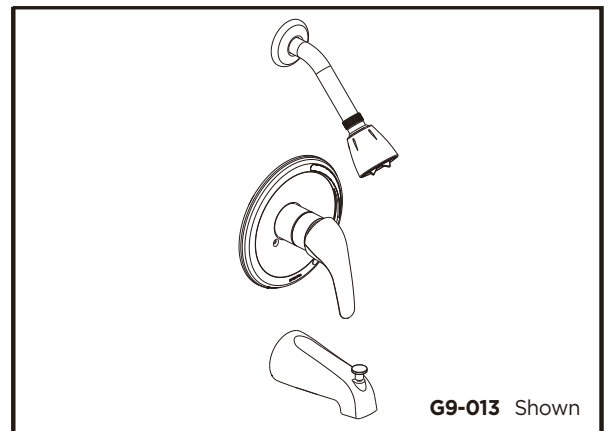
- G9-010** Single Handle and Flange Trim Kit, Chrome
G9-010-BN Single Handle and Flange Trim Kit, Brushed Nickel
G9-010-LP Single Handle and Flange Trim Kit, Loop Handle, Chrome
G9-012 Shower Only Trim Kit, Chrome
G9-012-BN Shower only trim kit, Brushed Nickel
G9-012-LP Shower only trim kit, Loop Handle, Chrome
G9-013 Tub/Shower Trim Kit, Chrome
G9-013-BN Tub/Shower Trim Kit, Brushed Nickel
G9-013-LP Tub/Shower Trim Kit, Loop Handle, Chrome

Prefixes Available:

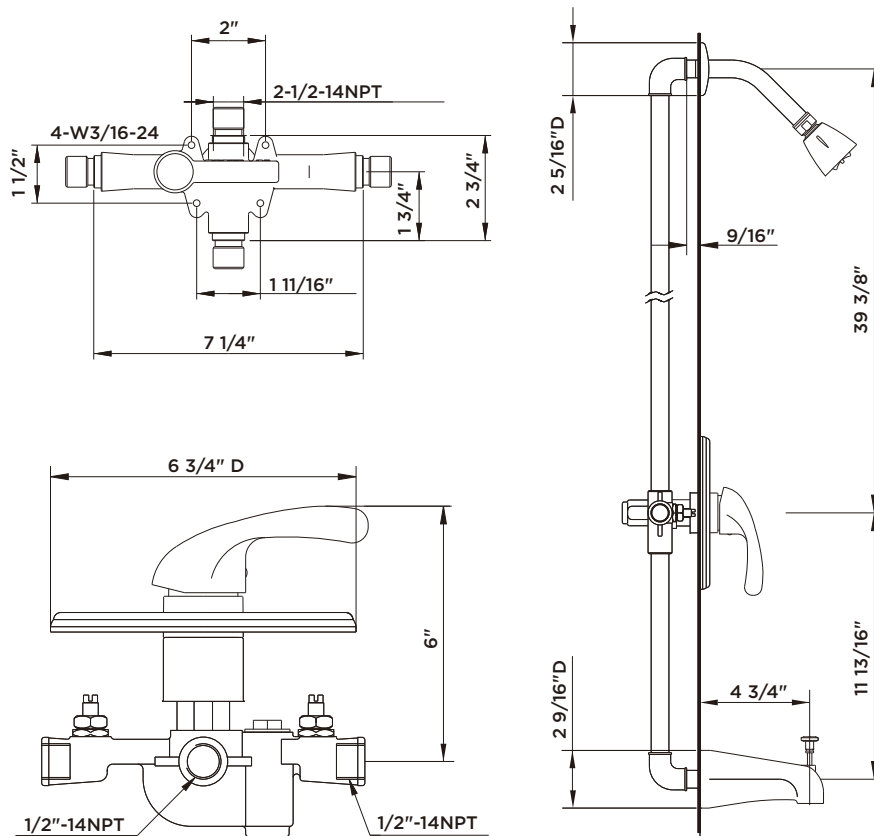
None

Suffixes Available:

None

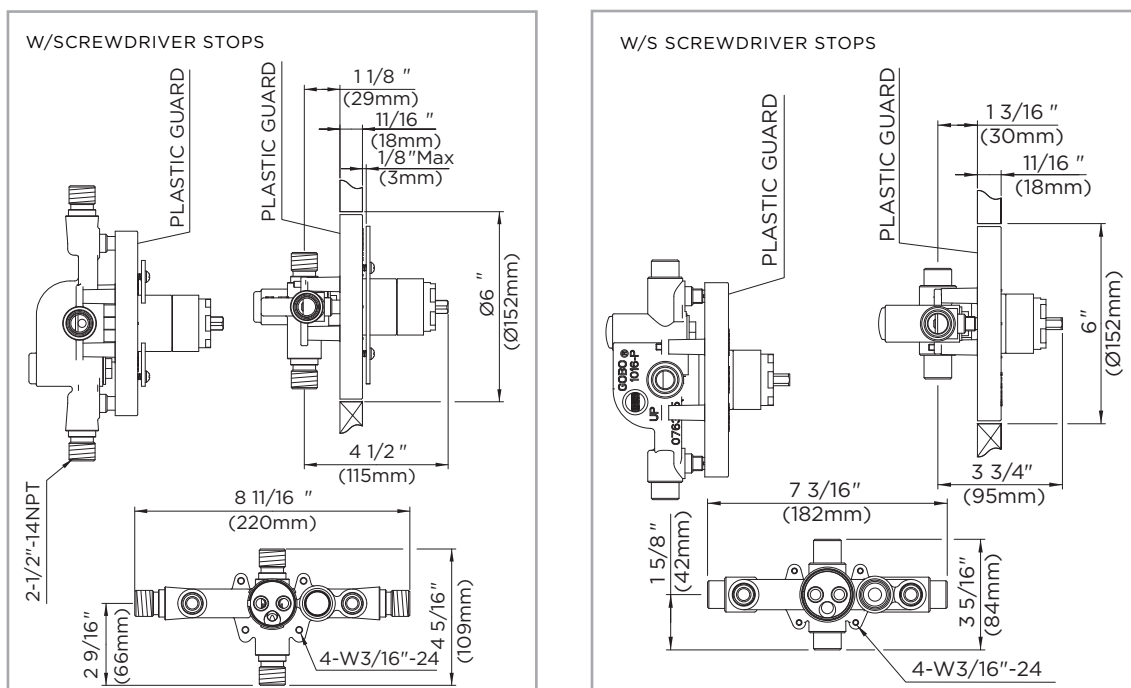


Job Name	
Date	
Model Specified	
Quantity	
Customer	
Contractor	
Architect/engineer	



SINGLE HANDLE PRESSURE BALANCE TUB & SHOWER VALVES

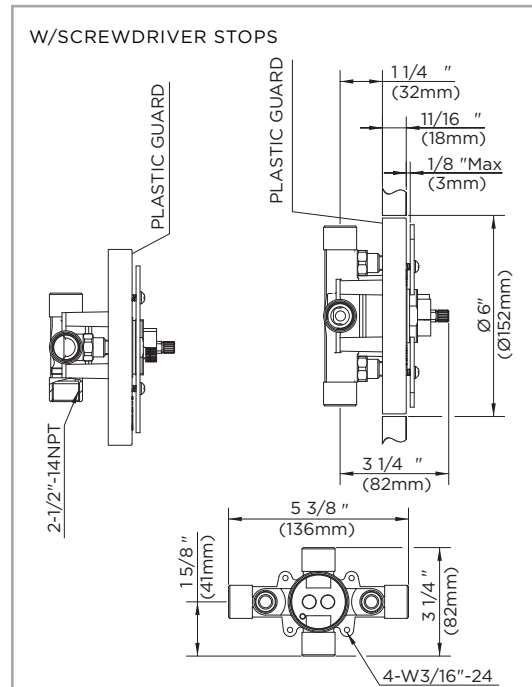
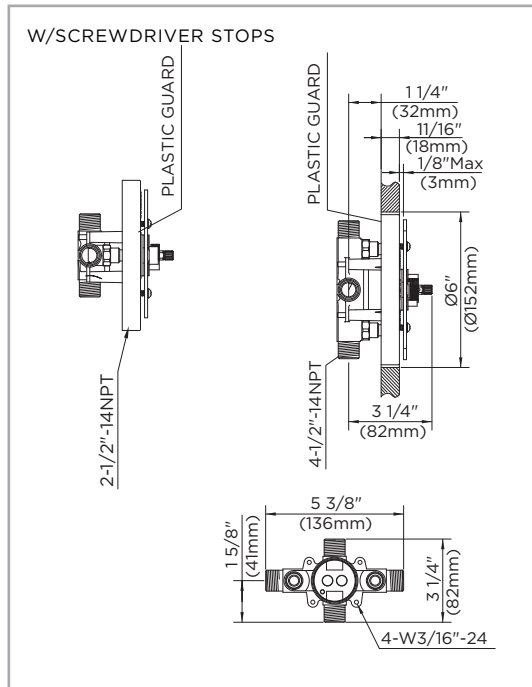
Critical Dimensions : Rough-in valve GS-303 (w/stops) & GS-305 (w/stops)





GERBER PLUS VALVES

Critical Dimensions : Rough-in valve GS-315 (PK) (w/stops) & GS-313-PK (w/stops)



Critical Dimensions : Rough-in valve GS-314-PK (w/stops) & GS-317-PK (w/stops)

