



VITREOUS CHINA

TOILET
25-733

LAVATORIES

TOILETS

BIDETS / URINALS

CAST IRON



NORTH POINT™ 1.28 **ErgoHeight™ Elongated Spud Bowl**

10" Rough-in

Features:

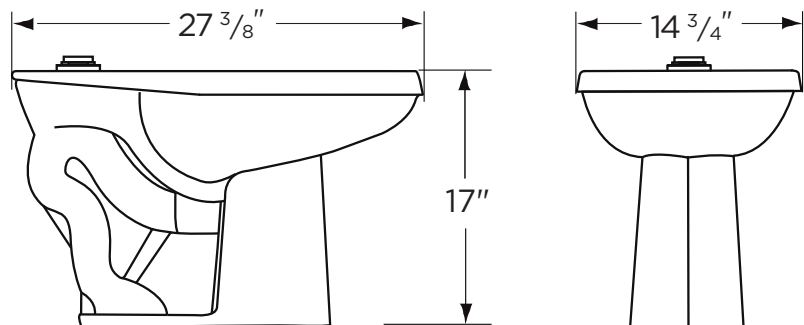
- 1.28 gpf/4.8 Lpf high efficiency floor mount bowl
- Elongated ErgoHeight™ bowl
- Top Spud
- Siphon Jet
- 1 1/2" spud for flushometer valve



Seat not included

Dimensions:

Height..... 17 "
Width..... 14 3/4 "
Depth..... 27 3/8 "
Rough-in..... 10 "
Water Surface from Rim 5 1/2 "
Trapway (min)..... 2 "
Water Surface 10 " x 8 7/8 "
Water Seal 2 1/4 "
Shipping Weight 47 lbs



THIS FIXTURE QUALIFIES
ACCORDING TO ASME TEST
PROCEDURES AS A HIGH
EFFICIENCY WATER CLOSET WITH
AN AVERAGE CONSUMPTION OF
1.28 gpf (4.8 Lpf) OR LESS.

www.gerberonline.com

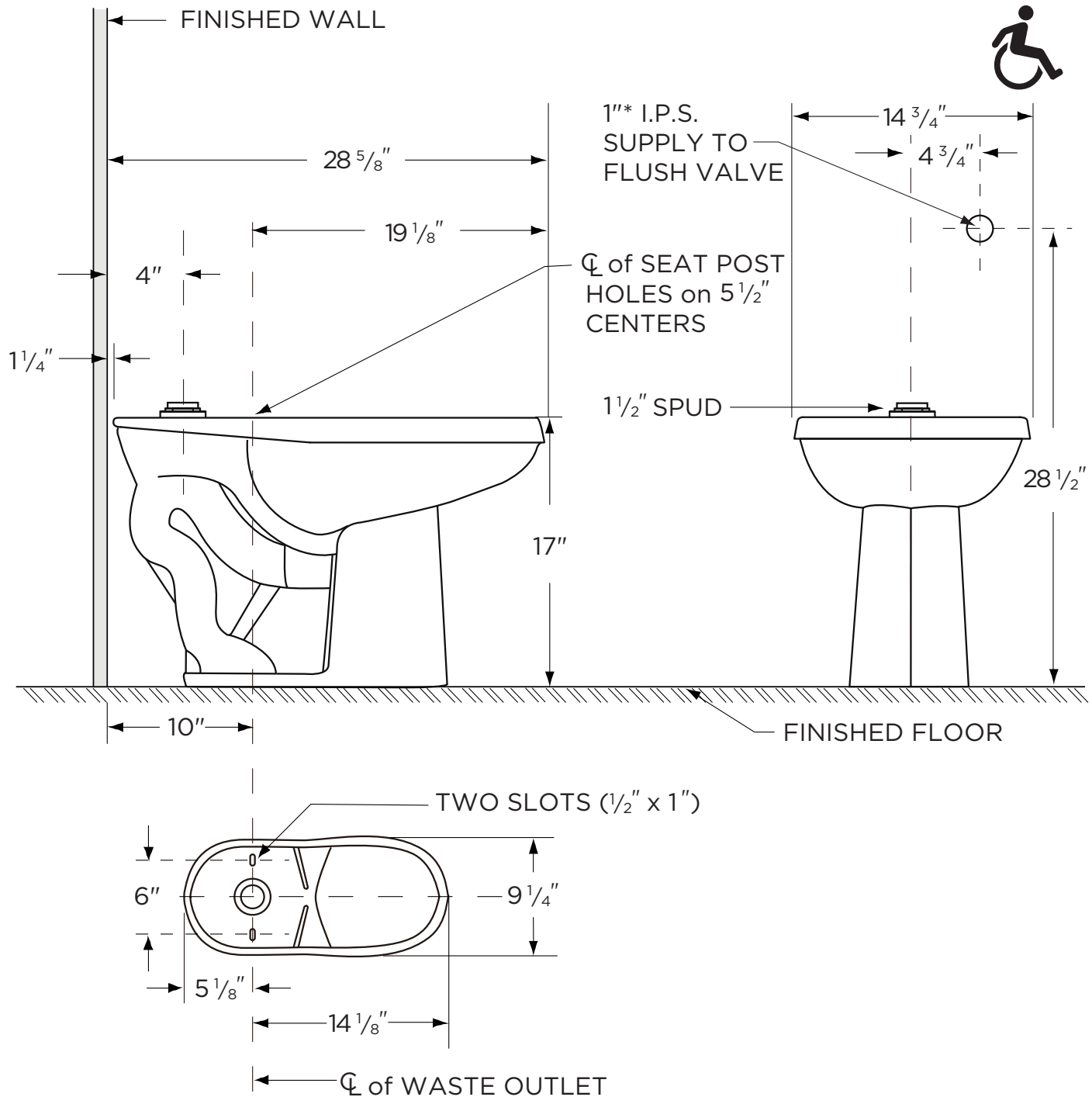
Job Name	
Date	
Model Specified	
Quantity	
Customer	
Contractor	
Architect/engineer	



1.28 gpf (4.8 Lpf) North Point™ 1.28 SPUD BOWL

25-733

ErgoHeight™ Elongated Spud Bowl



NOTES:

All dimensions are in inches.

Illustrations may not be drawn to scale.

*Use flush valve manufacturer's recommended rough-in

IMPORTANT:

Dimensions of fixtures are nominal and may vary within the range of tolerances established by ASME Standard A 112.19.2.

THIS FIXTURE QUALIFIES ACCORDING TO ASME TEST PROCEDURES AS A HIGH EFFICIENCY WATER CLOSET WITH AN AVERAGE CONSUMPTION OF 1.28 gpf (4.8 Lpf) OR LESS.