



VITREOUS CHINA

TOILET
25-730

LAVATORIES

TOILETS

BIDETS / URINALS

CAST IRON



COMMERCIAL 17" High, Elongated Top Spud Bowl

10" Rough-in

Features:

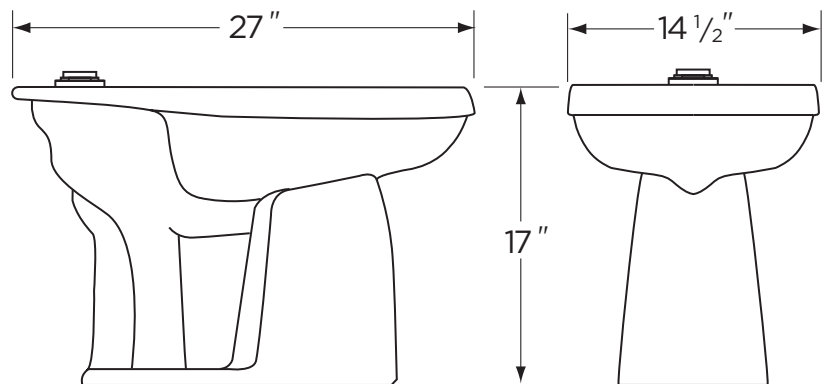
- Low Consumption 1.6 gpf (6.0 Lpf)
- Elongated Bowl
- Siphon Jet
- Large Trapway
- Quiet Refill
- 1 1/2" Spud For Flushometer Valve
- ADA compliant

Dimensions:

Height 17"
Width 14 1/2"
Depth 27"
Rough-in 10"
Water Surface from Rim 4 5/8"
Trapway (min) 2"
Water Surface 12" x 10"
Water Seal 3"
Shipping Weight 50 lbs



Seat not included



RECOMMENDED STATIC WATER
PRESSURE FOR PLUMBING
FIXTURES IS 20 - 80 PSI STATIC
PER ANSI STANDARDS A112.19.2M
APPENDIX B.

THIS FIXTURE QUALIFIES
ACCORDING TO ASME TEST
PROCEDURES AS A LOW
CONSUMPTION WATER CLOSET
WITH AN AVERAGE CONSUMPTION
OF 1.6 gpf (6 Lpf) OR LESS.



www.gerberonline.com

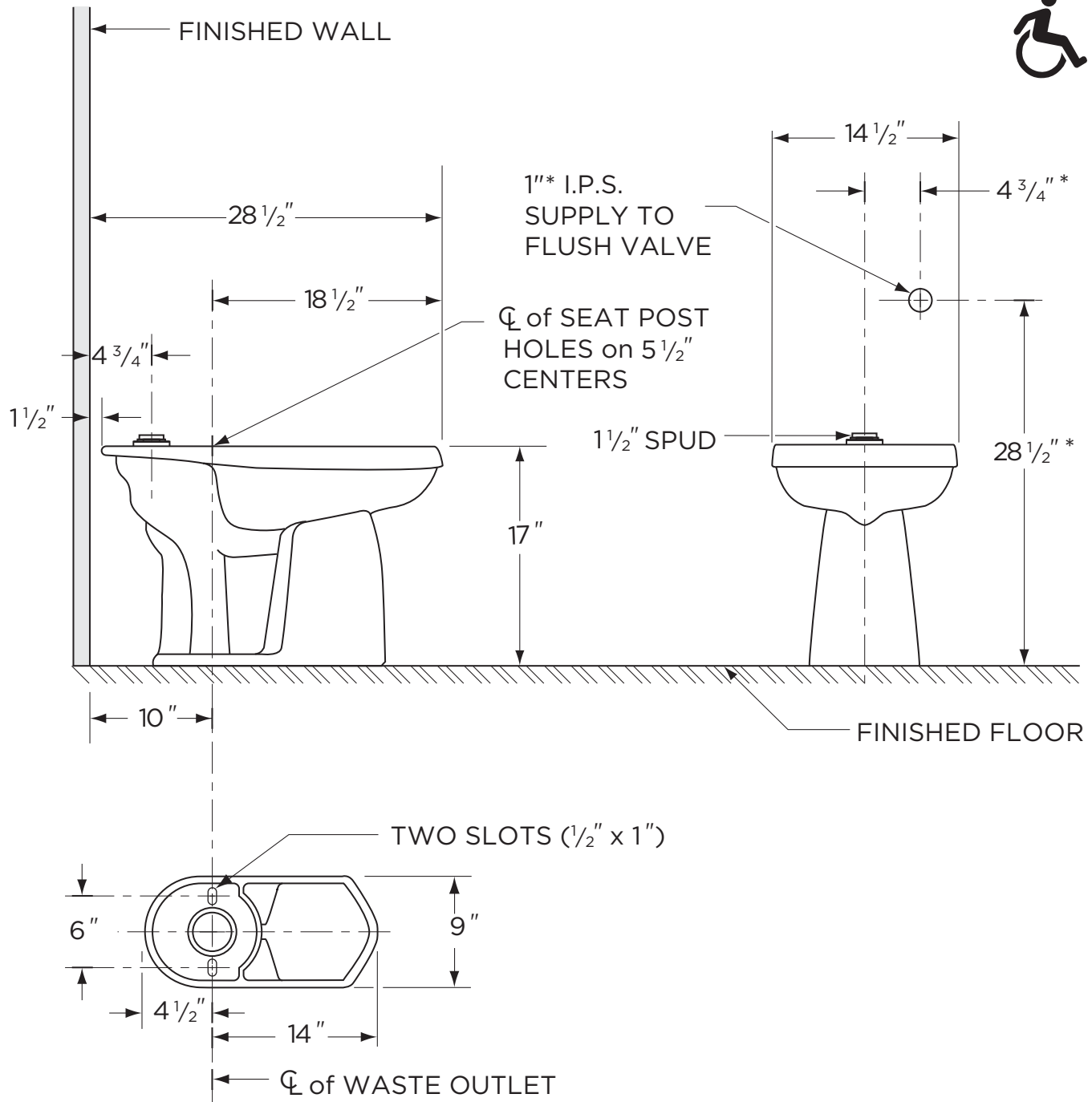
Job Name	
Date	
Model Specified	
Quantity	
Customer	
Contractor	
Architect/engineer	



1.6 gpf (6 Lpf) LOW CONSUMPTION COMMERCIAL BOWL

25-730

17" High Elongated Siphon Jet/Top Spud Bowl
10" Rough-in



NOTES:

All dimensions are in inches.

*Use flush valve manufacturer's recommended rough-in.

Illustrations may not be drawn to scale.

IMPORTANT:

Dimensions of fixtures are nominal and may vary within the range of tolerances established by ASME Standard A 112.19.2.

THIS FIXTURE QUALIFIES ACCORDING TO ASME TEST PROCEDURES AS A LOW CONSUMPTION WATER CLOSET WITH AN AVERAGE CONSUMPTION OF 1.6 gpf (6 Lpf) OR LESS.