



VITREOUS CHINA

TOILET
25-030 / 25-031

LAVATORIES

TOILETS

BIDETS / URINALS

CAST IRON



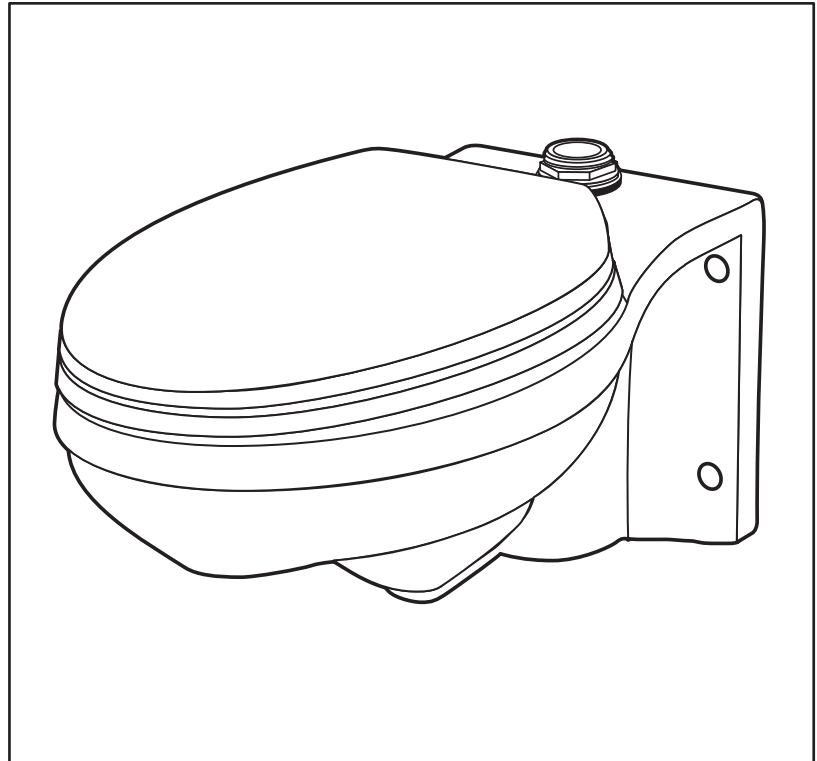
COMMERCIAL Wall Hung, Elongated Top Spud Bowl

Features:

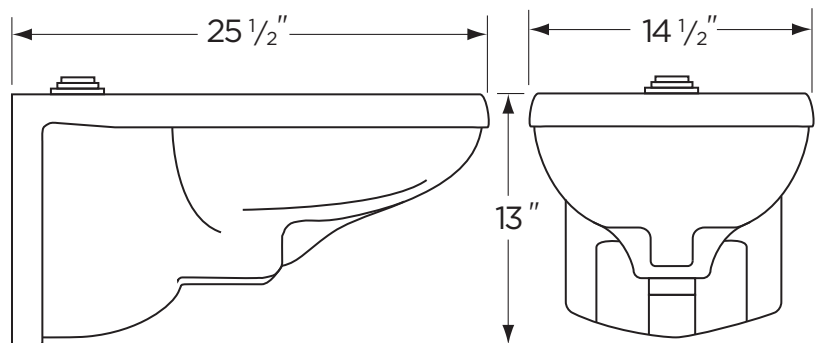
- 25-030 - Less Bedpan Lugs
- 25-031 - With Bedpan Lugs
- Low Consumption 1.6 gpf (6.0 Lpf)
- Wall Hung Unit
- Elongated Bowl
- Wall Waste Outlet
- 1 1/2" Spud for Flushometer Valve
- Siphon Jet
- ADA Compliant

Dimensions:

Height 13"
Width 14 1/2"
Depth 25 1/2"
Rough-in 5 1/4"
(For Handicapped & Elderly
Installation Rough-in is 7 1/4")
Water Surface from Rim 5"
Trapway (min) 2"
Water Surface 12" x 10"
Water Seal 2 1/2"
Shipping Weight 50 lbs



Seat not included



RECOMMENDED STATIC WATER
PRESSURE FOR PLUMBING
FIXTURES IS 20 - 80 PSI STATIC
PER ANSI STANDARDS A112.19.2M
APPENDIX B.

THIS FIXTURE QUALIFIES
ACCORDING TO ASME TEST
PROCEDURES AS A LOW
CONSUMPTION WATER CLOSET
WITH AN AVERAGE CONSUMPTION
OF 1.6 gpf (6 Lpf) OR LESS.



www.gerberonline.com

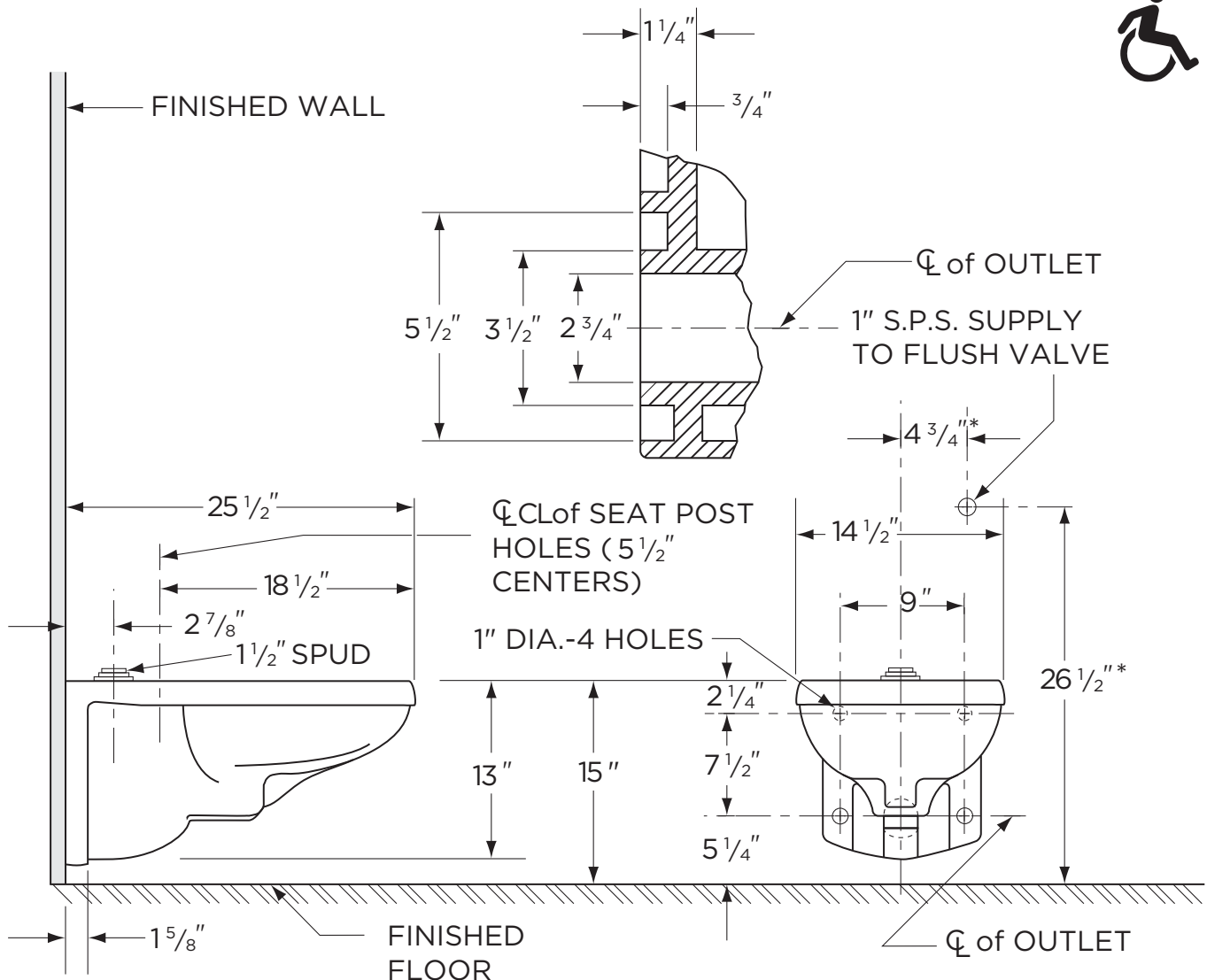
Job Name	
Date	
Model Specified	
Quantity	
Customer	
Contractor	
Architect/engineer	



1.6 gpf (6 Lpf) LOW CONSUMPTION COMMERCIAL BOWL

25-030 / 25-031

Wall Hung, Elongated Siphon Jet / Top Spud Bowl



NOTES:

All dimensions are in inches.

*These measurements may vary. Use flush valve manufacturer's recommended rough-in and consult local code requirements. Suggest 1/16" clearance between face of wall and back of bowl.

Carrier fitting as required to be furnished by others. Flush valve not included and must be ordered separately.

Illustrations may not be drawn to scale.

PLUMBERS NOTE:

Provide suitable reinforcement for all wall supports. Rough height 15" may vary with architects requirements. For Handicapped and Elderly installation rough height will be 17".

IMPORTANT:

Dimensions of fixtures are nominal and may vary within the range of tolerances established by ASME Standard A 112.19.2.

THIS FIXTURE QUALIFIES ACCORDING TO ASME TEST PROCEDURES AS A LOW CONSUMPTION WATER CLOSET WITH AN AVERAGE CONSUMPTION OF 1.6 gpf (6 Lpf) OR LESS.