

# Section AA

5/2001

# Ford Service Saddles and Tapping Sleeves



**The Ford Meter Box Co., Inc.** 775 Manchester Avenue, P.O. Box 443, Wabash, Indiana, USA 46992-0443  
Telephone: 219/563-3171 FAX: 1-800-826-3487 Overseas FAX: 219/563-0167 <http://www.fordmeterbox.com>

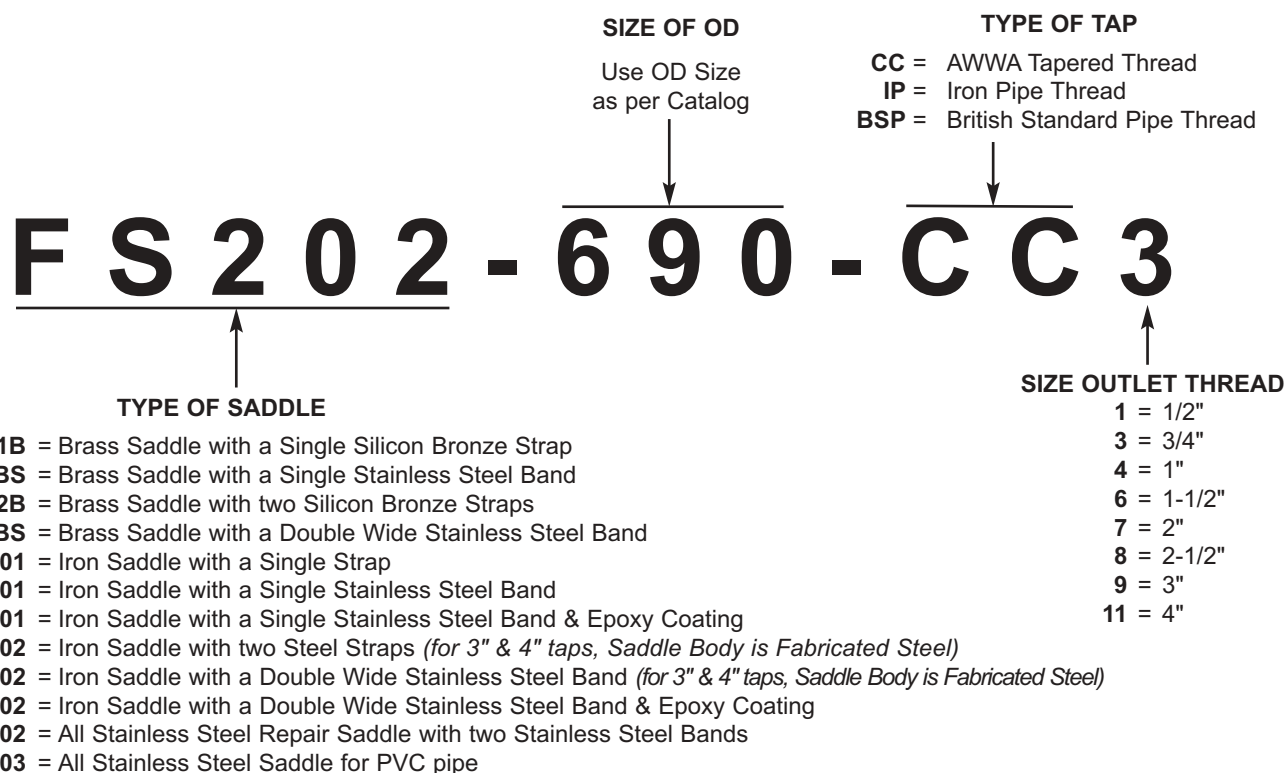
# Contents

|   | Page           | Recommended Product Application |              |                      |    |
|---|----------------|---------------------------------|--------------|----------------------|----|
|   |                | *Steel Size<br>PVC              | *C900<br>PVC | Cast/Ductile<br>Iron | AC |
| <b>Product Numbering System</b> .....               | 2 & 3          |                                 |              |                      |    |
| <b>Brass Saddle Specifications</b> .....            | 10, 12, 14, 16 |                                 |              |                      |    |
| S70, S71 .....                                      | 11             | X                               |              |                      |    |
| S90, S91 .....                                      | 13             |                                 | X            |                      |    |
| S902, S912 .....                                    | 13             |                                 | X            |                      |    |
| 101B, 202B .....                                    | 15             |                                 |              | X                    | X  |
| 101BS, 202BS .....                                  | 17             |                                 | X            |                      |    |
| <b>Iron Saddle Specifications</b> .....             | 18             |                                 |              |                      |    |
| F101, F202 .....                                    | 19, 20         |                                 |              | X                    | X  |
| FS101, FS202 .....                                  | 19, 20, 21     | *X                              | *X           | X                    | X  |
| FC101, FC202 .....                                  | 19, 20, 21     | *X                              | *X           | X                    | X  |
| <b>Fabricated Steel Saddle Specifications</b> ..... | 22             |                                 |              |                      |    |
| F202 .....  | 23             |                                 |              | X                    | X  |
| FS202 .....   | 23             | *X                              | *X           | X                    | X  |
| <b>Repair Saddles</b> .....                         |                |                                 |              |                      |    |
| FRS202 .....  | 25             |                                 | X            | X                    | X  |
| <b>Stainless Steel Saddles</b> .....                |                |                                 |              |                      |    |
| FS303 .....   | 24             | X                               | X            |                      |    |
| <b>† Tapping Sleeve Specifications</b> .....        | 4, 6, 8        |                                 |              |                      |    |
| FAST .....  | 5              | X                               | X            | X                    | X  |
| FTSS .....  | 7              | X                               | X            | X                    | X  |
| FTS .....   | 9              | X                               | X            | X                    | X  |
| FTSC .....  | 9              | X                               | X            | X                    | X  |
| <b>O.D. Chart</b> .....                             | 26             |                                 |              |                      |    |
| <b>Warranty</b> .....                               | 28             |                                 |              |                      |    |

\* All FS101, FC101, FS202 and FC202 Saddles recommended for C900 or steel size PVC require sizes specific to the pipe O.D.

† See Catalog Section N for Style FWS Ford Steel Weld-On Tapping Sleeves.

## Ford Brass Saddle and Iron Service Saddle Numbering System



## Ford All Brass Saddle for PVC Pipe Numbering System

### TYPE OF SADDLE

S = Brass Saddle

### TYPE OUTLET THREAD

0 = Tapped AWWA

1 = Tapped Iron Pipe

**S**

**7**

**0**

**-**

**20**

**3**

### TYPE OF MAIN TO BE TAPPED

7 = PVC Main - Steel O.D.

9 = PVC Main - Cast Iron O.D.

### SIZE PVC MAIN

20 = 2"

25 = 2-1/2"

30 = 3"

40 = 4"

50 = 5"

60 = 6"

80 = 8"

100 = 10"

120 = 12"

### SIZE OUTLET THREAD

1 = 1/2"

3 = 3/4"

4 = 1"

5 = 1-1/4"

6 = 1-1/2"

7 = 2"

Note: S902 and S912 styles are 4", 6" and 8" two-piece bolted saddles. These saddles follow the same numbering system except the "2" distinguishes these saddles from the hinged saddles of the same size.

## Ford Tapping Sleeve Numbering System

### TYPE OF TAPPING SLEEVE

**FAST** = All Stainless Steel Tapping Sleeve

**FTSS** = All Stainless Steel Tapping Sleeve with Removable Bolts

**FTS** = Standard Steel Tapping Sleeve

**FTSC** = Epoxy Coated Steel Tapping Sleeve with Stainless Steel Bolts

### OPTIONS

**A** = Optional Carbon Steel Flange on FAST & FTSS

**-SH** = Optional Stainless Steel Nuts and Bolts on FTS

**FAST**

**-**

**970**

**-4A**

### SIZE OF OD

Use OD Size as per  
Catalog

### FLANGE SIZE

#### CODE

4 = 4"

6 = 6"

8 = 8"

10 = 10"

12 = 12"

16 = 16"

# Information

Ford Service Saddles are used to install corporation stops on virtually all types of water main pipe including Iron, PVC, and Asbestos-Cement. Saddles constructed of ductile iron, brass, or stainless steel are available in all the popular sizes and for most metric sized pipe. All saddles feature 3/4" through 2" tapped outlets manufactured to ANSI/AWWA C800 or British Standard Pipe threads, as required.

Ductile Iron Saddles are available with either single or double electro-galvanized steel straps or with optional stainless steel bands. Brass Saddles are cast of 85-5-5-5 water works brass. The popular S70-S90 Series features a hinged design and the 101B-202B Series incorporates silicon bronze straps or optional stainless steel bands.

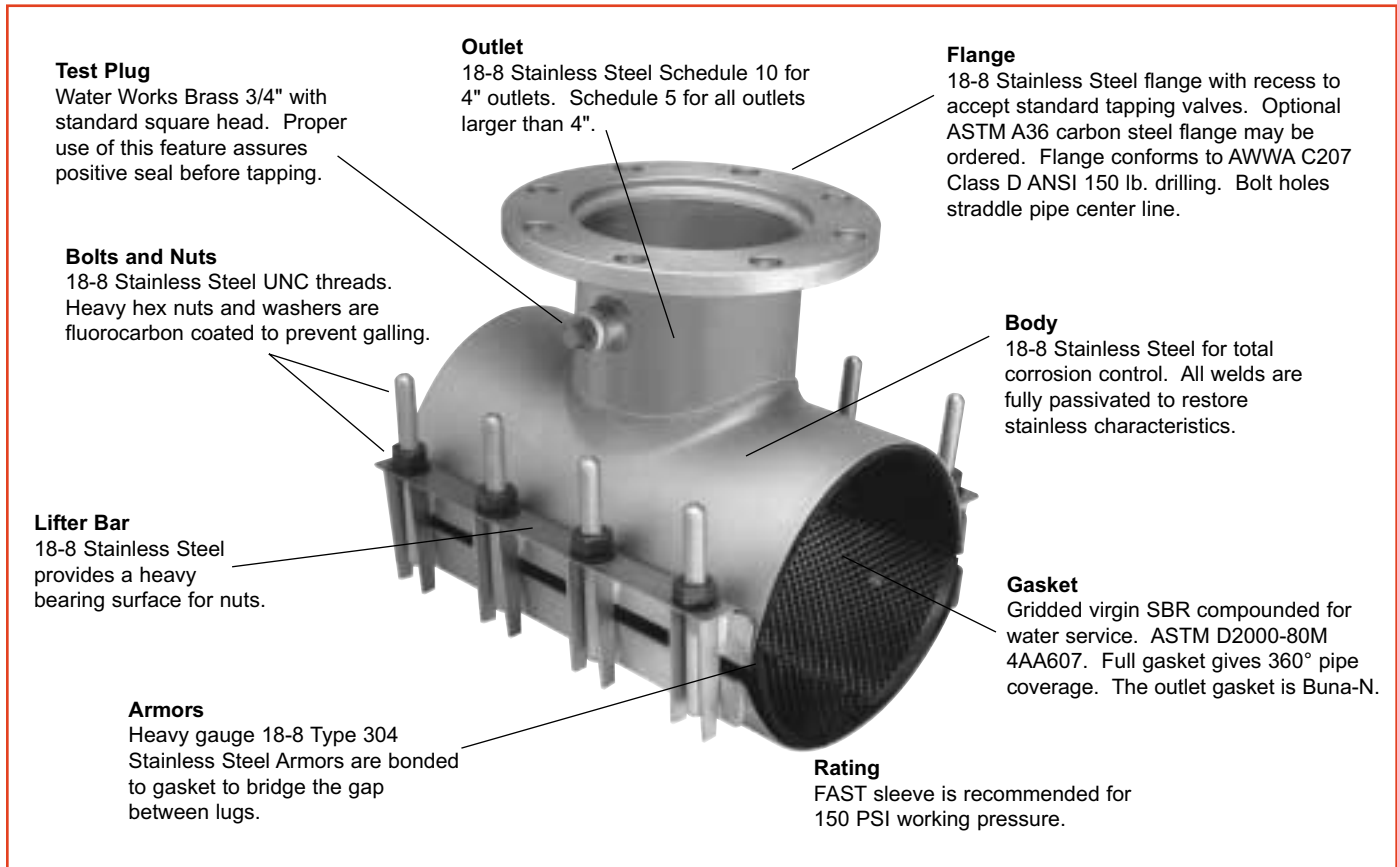
Tapping Sleeves of fabricated steel and stainless steel round out the Ford line of tapping devices. Each sleeve has a flange outlet conforming to AWWA C207 Class D-ANSI 150 lb. drilling and the standard sizes have been optimized for U.S. Pipe Standards. Flanges conforming to alternate AWWA or international specifications are also available upon request. The FAST Sleeve is featured in this catalog section and details may be found on pages 4 and 5.

# Specifications

## Ford Tapping Sleeves Style FAST

Ford FAST Tapping Sleeves take the guesswork out of large pipe taps. A gridded gasket surrounds the pipe and not only cushions the pipe during the tap but also provides protection in case the pipe breaks. The flange outlet is double welded inside and out.

The sleeve is constructed of Grade 18-8 type 304 Stainless Steel to provide corrosion protection and is easy to handle. Sleeves are available in pipe sizes 4" through 24", with flange outlets from 4" through 12". Detailed specifications and critical dimensions are outlined below.



## FAST Dimensions



| NOM. PIPE SIZE | FLANGE SIZE | A        | B       | C       | D   | STUD SIZE | NO. OF STUDS | DESIGN STYLE |
|----------------|-------------|----------|---------|---------|-----|-----------|--------------|--------------|
| 4" thru 12"    | 4"          | 5-1/32"  | 4-1/4"  | 5-3/16" | 15" | 5/8"      | 8            | 2 pc.        |
|                | 6"          | 7-1/32"  | 6-3/8"  | 5-1/2"  | 15" | 5/8"      | 8            | 2 pc.        |
|                | 8"          | 9-1/32"  | 8-5/16" | 5-5/8"  | 20" | 5/8"      | 12           | 2 pc.        |
|                | 10"         | 11-1/32" | 10-1/4" | 6-1/8"  | 20" | 3/4"      | 12           | 2 pc.        |
|                | 12"         | 13-1/32" | 12-1/4" | 6-1/4"  | 24" | 3/4"      | 14           | 2 pc.        |
| 14"            | 4"          | 5-1/32"  | 4-1/4"  | 5-3/16" | 16" | 3/4"      | 10           | 2 pc.        |
|                | 6"          | 7-1/32"  | 6-3/8"  | 5-1/2"  | 16" | 3/4"      | 10           | 2 pc.        |
|                | 8"          | 9-1/32"  | 8-5/16" | 5-5/8"  | 20" | 3/4"      | 12           | 2 pc.        |
|                | 10"         | 11-1/32" | 10-1/4" | 6-1/8"  | 20" | 3/4"      | 12           | 2 pc.        |
|                | 12"         | 13-1/32" | 12-1/4" | 6-1/4"  | 24" | 3/4"      | 14           | 2 pc.        |
| 16" - 18"      | 4"          | 5-1/32"  | 4-1/4"  | 5-3/16" | 16" | 5/8"      | 15           | 3 pc.        |
|                | 6"          | 7-1/32"  | 6-3/8"  | 5-1/2"  | 16" | 5/8"      | 15           | 3 pc.        |
|                | 8"          | 9-1/32"  | 8-5/16" | 5-5/8"  | 20" | 5/8"      | 18           | 3 pc.        |
|                | 10"         | 11-1/32" | 10-1/4" | 6-1/8"  | 20" | 3/4"      | 18           | 3 pc.        |
|                | 12"         | 13-1/32" | 12-1/4" | 6-1/4"  | 24" | 3/4"      | 21           | 3 pc.        |
| 20" - 24"      | 4"          | 5-1/32"  | 4-1/4"  | 5-3/16" | 16" | 3/4"      | 15           | 3 pc.        |
|                | 6"          | 7-1/32"  | 6-3/8"  | 5-1/2"  | 16" | 3/4"      | 15           | 3 pc.        |
|                | 8"          | 9-1/32"  | 8-5/16" | 5-5/8"  | 20" | 3/4"      | 18           | 3 pc.        |
|                | 10"         | 11-1/32" | 10-1/4" | 6-1/8"  | 20" | 3/4"      | 18           | 3 pc.        |
|                | 12"         | 13-1/32" | 12-1/4" | 6-1/4"  | 24" | 3/4"      | 21           | 3 pc.        |

# Ford Stainless Tapping Sleeve

## Style FAST Tapping Sleeve with Stainless Steel or Carbon Steel Flange

**To Order:** Select the Catalog Sleeve Number for the desired range and complete the Catalog Number by adding the Flange Code. Example: The complete Catalog Number for a 6" Ductile Iron pipe (6.90 O.D.) with a 4" Stainless Steel Flange is FAST-730-4. The FAST-700-4 with a range of 6.60 to 7.00 could also be used on 6.90 O.D. pipe. Please call for prices and delivery on pipe O.D. sizes not covered by our standard range.

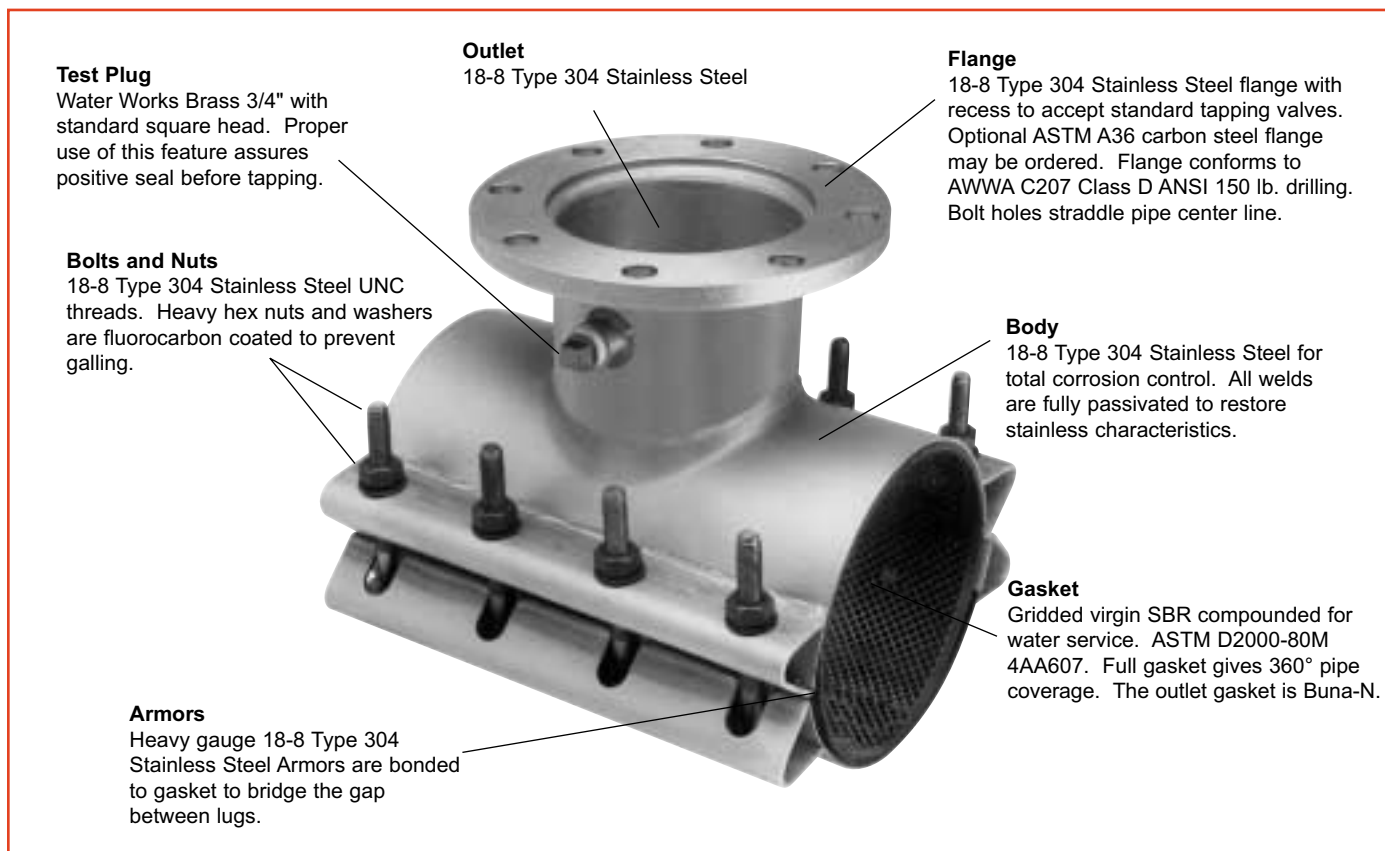
| NOM.<br>PIPE<br>SIZE | SLEEVE<br>O.D.<br>RANGE | SLEEVE<br>NUMBER | BY | STAINLESS<br>STEEL SIZE<br>FLANGE CODE | OPTIONAL<br>CARBON STEEL<br>FLANGE CODE | APPROX.<br>WT. LBS. |  |
|----------------------|-------------------------|------------------|----|--|---|---------------------|--|
| 4"                   | 4.50-4.80               | FAST-480         |    | 4                                      | 4A                                      | 36                  |  |
|                      | 4.80-5.10               | FAST-510         |    |  |   |                     |  |
|                      | 5.05-5.30               | FAST-530         |    |  |   |                     |  |
| 6"                   | 6.60-7.00               | FAST-700         |    | 4                                      | 4A                                      | 39                  |  |
|                      | 6.90-7.30               | FAST-730         |    | 6                                      | 6A                                      | 43                  |  |
|                      | 7.10-7.50               | FAST-750         |    |  |   |                     |  |
| 8"                   | 8.63-9.05               | FAST-905         |    | 4                                      | 4A                                      | 43                  |  |
|                      | 9.05-9.45               | FAST-945         |    | 6                                      | 6A                                      | 47                  |  |
|                      | 9.30-9.70               | FAST-970         |    | 8                                      | 8A                                      | 64                  |  |
| 10"                  | * 10.75-11.15           | * FAST-1115      |    | 4                                      | 4A                                      | 46                  |  |
|                      | 11.05-11.45             | FAST-1145        |    | 6                                      | 6A                                      | 50                  |  |
|                      | 11.75-12.15             | FAST-1215        |    | 8                                      | 8A                                      | 68                  |  |
|                      |                         |                  |    | 10                                     | 10A                                     | 73                  |  |
| 12"                  | * 12.75-13.20           | * FAST-1320      |    | 4                                      | 4A                                      | 49                  |  |
|                      | 13.10-13.50             | FAST-1350        |    | 6                                      | 6A                                      | 53                  |  |
|                      |                         |                  |    | 8                                      | 8A                                      | 72                  |  |
|                      |                         |                  |    | 10                                     | 10A                                     | 77                  |  |
|                      | 14.00-14.40             | FAST-1440        |    | 12                                     | 12A                                     | 107                 |  |
| 14"                  | 15.30-15.70             | FAST-1570        |    | 4                                      | 4A                                      | 70                  |  |
|                      | 15.80-16.20             | FAST-1620        |    | 6                                      | 6A                                      | 74                  |  |
|                      |                         |                  |    | 8                                      | 8A                                      | 93                  |  |
|                      |                         |                  |    | 10                                     | 10A                                     | 98                  |  |
|                      | 16.48-16.88             | FAST-1688        |    | 12                                     | 12A                                     | 132                 |  |
| 16"                  | 17.40-17.80             | FAST-1780        |    | 4                                      | 4A                                      | 75                  |  |
|                      | 17.75-18.15             | FAST-1815        |    | 6                                      | 6A                                      | 79                  |  |
|                      |                         |                  |    | 8                                      | 8A                                      | 100                 |  |
|                      |                         |                  |    | 10                                     | 10A                                     | 105                 |  |
|                      | 18.60-19.00             | FAST-1900        |    | 12                                     | 12A                                     | 141                 |  |
| 18"                  | 19.50-19.92             | FAST-1992        |    | 4                                      | 4A                                      | 77                  |  |
|                      | 19.80-20.20             | FAST-2020        |    | 6                                      | 6A                                      | 81                  |  |
|                      |                         |                  |    | 8                                      | 8A                                      | 103                 |  |
|                      |                         |                  |    | 10                                     | 10A                                     | 108                 |  |
|                      |                         |                  |    | 12                                     | 12A                                     | 144                 |  |
| 20"                  | 20.20-20.60             | FAST-2060        |    | 4                                      | 4A                                      | 87                  |  |
|                      | 21.20-21.60             | FAST-2160        |    | 6                                      | 6A                                      | 91                  |  |
|                      |                         |                  |    | 8                                      | 8A                                      | 115                 |  |
|                      |                         |                  |    | 10                                     | 10A                                     | 120                 |  |
|                      | 21.86-22.26             | FAST-2226        |    | 12                                     | 12A                                     | 158                 |  |
| 24"                  | 23.80-24.20             | FAST-2420        |    | 4                                      | 4A                                      | 93                  |  |
|                      |                         |                  |    | 6                                      | 6A                                      | 97                  |  |
|                      |                         |                  |    | 8                                      | 8A                                      | 121                 |  |
|                      | 25.60-26.00             | FAST-2600        |    | 10                                     | 10A                                     | 127                 |  |
|                      |                         |                  |    | 12                                     | 12A                                     | 167                 |  |

\* Size on size FAST for this range is not available; see FTSS.

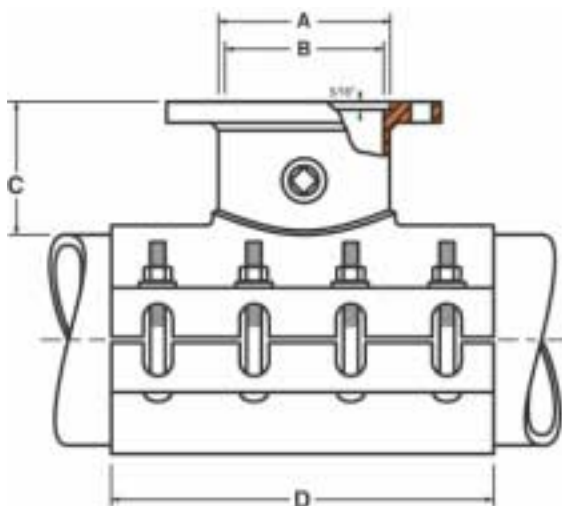
# Specifications

## Ford All Stainless Tapping Sleeve with Removable Bolts and 360° Gasket Style FTSS

Ford FTSS Tapping Sleeves have a heavy gauge stainless steel body with removable bolts. A gridded gasket surrounds the pipe, which cushions the pipe and helps prevent pipe breaks. All welds are chemically passivated to ensure maximum corrosion protection.



### FTSS Dimensions



| NOM. PIPE SIZE | FLANGED OUTLET SIZE | A        | B       | C       | D   | SIZE BOLT | NUMBER OF BOLTS |
|----------------|---------------------|----------|---------|---------|-----|-----------|-----------------|
| 4" thru 12"    | 4"                  | 5-1/32"  | 4-1/4"  | 5-3/16" | 15" | 5/8"      | 8               |
|                | 6"                  | 7-1/32"  | 6-3/8"  | 5-1/2"  | 15" | 5/8"      | 8               |
|                | 8"                  | 9-1/32"  | 8-5/16" | 5-5/8"  | 20" | 5/8"      | 12              |
|                | 10"                 | 11-1/32" | 10-1/4" | 6-1/8"  | 20" | 3/4"      | 12              |
|                | 12"                 | 13-1/32" | 12-1/4" | 6-1/4"  | 24" | 3/4"      | 14              |
| 14" thru 16"   | 4"                  | 5-1/32"  | 4-1/4"  | 5-3/16" | 16" | 3/4"      | 10              |
|                | 6"                  | 7-1/32"  | 6-3/8"  | 5-1/2"  | 16" | 3/4"      | 10              |
|                | 8"                  | 9-1/32"  | 8-5/16" | 5-5/8"  | 20" | 3/4"      | 12              |
|                | 10"                 | 11-1/32" | 10-1/4" | 6-1/8"  | 20" | 3/4"      | 12              |
|                | 12"                 | 13-1/32" | 12-1/4" | 6-1/4"  | 24" | 3/4"      | 14              |
| 18" thru 24"   | 4"                  | 5-1/32"  | 4-1/4"  | 5-3/16" | 16" | 3/4"      | 10              |
|                | 6"                  | 7-1/32"  | 6-3/8"  | 5-1/2"  | 16" | 3/4"      | 10              |
|                | 8"                  | 9-1/32"  | 8-5/16" | 5-5/8"  | 20" | 3/4"      | 14              |
|                | 10"                 | 11-1/32" | 10-1/4" | 6-1/8"  | 20" | 3/4"      | 14              |
|                | 12"                 | 13-1/32" | 12-1/4" | 6-1/4"  | 24" | 3/4"      | 16              |

# Ford Stainless Tapping Sleeve with Removable Bolts

## Style FTSS Tapping Sleeve with Stainless Steel or Carbon Steel Flange

**To Order:** Select the Sleeve Number for the desired pipe material and range; complete the Catalog Number by adding the Flange Code. **Example:** The complete FTSS Catalog Number for a 6" Ductile Iron Pipe (6.90 OD) with a Stainless Steel Flange is FTSS-710-4.

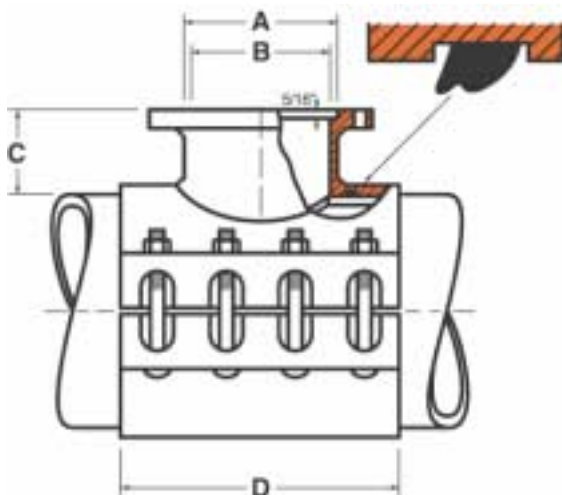
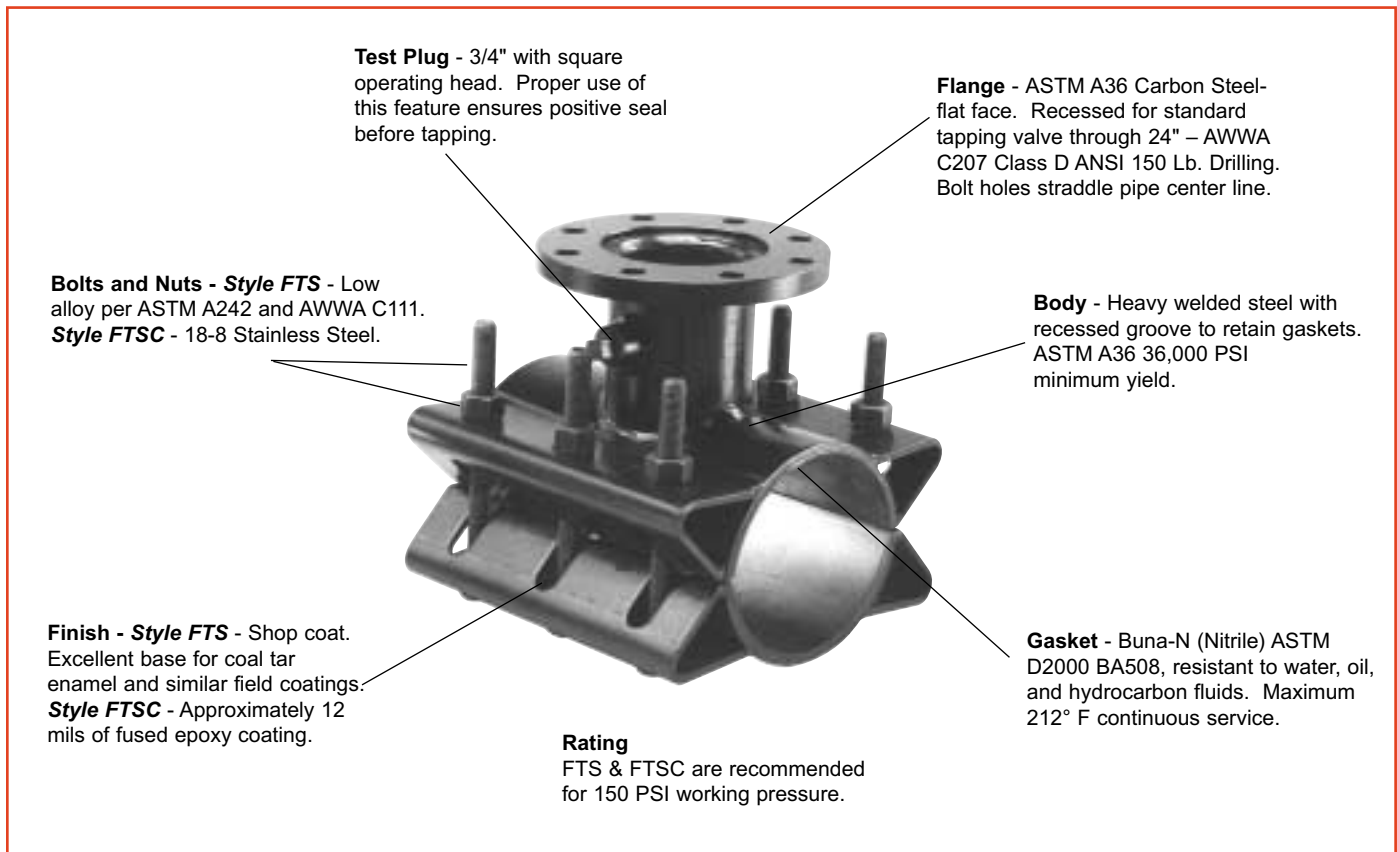
| NOM.<br>PIPE<br>SIZE | SLEEVE O.D. RANGE | SLEEVE<br>NUMBER | BY | STAINLESS<br>STEEL SIZE<br>FLANGE CODE | OPTIONAL<br>CARBON STEEL<br>FLANGE CODE | APPROX.<br>WT.<br>LBS. |
|----------------------|-------------------|------------------|----|--|---|------------------------|
| 4"                   | 4.50              | FTSS-450-        |    | 4                                      | 4A                                      | 38                     |
|                      | 4.80-5.00         | FTSS-500-        |    |  |   |                        |
|                      | 5.10-5.30         | FTSS-530-        |    |  |   |                        |
|                      | 5.20-5.40         | FTSS-540-        |    |  |   |                        |
| 6"                   | 6.90-7.10         | FTSS-710-        |    | 4                                      | 4A                                      | 40                     |
|                      | 7.10-7.30         | FTSS-730-        |    | 6                                      | 6A                                      | 45                     |
|                      | 7.30-7.50         | FTSS-750-        |    |  |   |                        |
| 8"                   | 8.63              | FTSS-863-        |    | 4                                      | 4A                                      | 53                     |
|                      | 9.05-9.30         | FTSS-930-        |    | 6                                      | 6A                                      | 58                     |
|                      | 9.30-9.60         | FTSS-960-        |    |  |   |                        |
|                      | 9.45-9.75         | FTSS-975-        |    | 8                                      | 8A                                      | 78                     |
| 10"                  | 10.75             | FTSS-1075-       |    | 4                                      | 4A                                      | 56                     |
|                      | 11.10-11.40       | FTSS-1140-       |    | 6                                      | 6A                                      | 60                     |
|                      | 11.40-11.70       | FTSS-1170-       |    | 8                                      | 8A                                      | 85                     |
|                      | 11.85-12.15       | FTSS-1215-       |    | 10                                     | 10A                                     | 96                     |
| 12"                  | 12.75             | FTSS-1275-       |    | 4                                      | 4A                                      | 62                     |
|                      | 13.20-13.50       | FTSS-1350-       |    | 6                                      | 6A                                      | 66                     |
|                      | 13.50-13.80       | FTSS-1380-       |    | 8                                      | 8A                                      | 90                     |
|                      | 14.10-14.40       | FTSS-1440-       |    | 10                                     | 10A                                     | 105                    |
| 14"                  |                   |                  |    | 12                                     | 12A                                     | 142                    |
|                      | 15.30-15.70       | FTSS-1570-       |    | 4                                      | 4A                                      | 80                     |
|                      |                   |                  |    | 6                                      | 6A                                      | 85                     |
|                      | 15.80-16.20       | FTSS-1620-       |    | 8                                      | 8A                                      | 114                    |
| 16"                  |                   |                  |    | 10                                     | 10A                                     | 150                    |
|                      | 16.48-16.88       | FTSS-1688-       |    | 12                                     | 12A                                     | 171                    |
|                      | 17.40-17.80       | FTSS-1780-       |    | 4                                      | 4A                                      | 90                     |
|                      | 17.75-18.15       | FTSS-1815-       |    | 6                                      | 6A                                      | 94                     |
| 18"                  | 18.15-18.60       | FTSS-1860-       |    | 8                                      | 8A                                      | 126                    |
|                      | 18.80-19.20       | FTSS-1920-       |    | 10                                     | 10A                                     | 163                    |
|                      |                   |                  |    | 12                                     | 12A                                     | 182                    |
|                      | 19.50-19.92       | FTSS-1992-       |    | 4                                      | 4A                                      | 128                    |
| 20"                  |                   |                  |    | 6                                      | 6A                                      | 132                    |
|                      | 19.80-20.20       | FTSS-2020-       |    | 8                                      | 8A                                      | 162                    |
|                      |                   |                  |    | 10                                     | 10A                                     | 211                    |
|                      |                   |                  |    | 12                                     | 12A                                     | 239                    |
| 22"                  | 20.20-20.60       | FTSS-2060-       |    | 4                                      | 4A                                      | 146                    |
|                      |                   |                  |    | 6                                      | 6A                                      | 150                    |
|                      | 21.20-21.60       | FTSS-2160-       |    | 8                                      | 8A                                      | 182                    |
|                      |                   |                  |    | 10                                     | 10A                                     | 238                    |
| 24"                  |                   |                  |    | 12                                     | 12A                                     | 269                    |
|                      | 23.80-24.20       | FTSS-2420-       |    | 4                                      | 4A                                      | 175                    |
|                      |                   |                  |    | 6                                      | 6A                                      | 180                    |
|                      | 25.60-26.00       | FTSS-2600-       |    | 8                                      | 8A                                      | 212                    |
| 26"                  |                   |                  |    | 10                                     | 10A                                     | 277                    |
|                      | 26.20-26.60       | FTSS-2660-       |    | 12                                     | 12A                                     | 313                    |

# Specifications

## Ford Tapping Sleeves Styles FTS and FTSC

Ford Tapping Sleeves feature a simple design that can easily be installed without special tools, welding, or caulking. Most sleeves have a range that allows for installation on more than one pipe diameter. The large gasket has a broad cross-section to resist rolling and to provide a dependable seal. Ford Tapping Sleeves are recommended for use on commonly used water mains such as asbestos-cement, cast or ductile iron, and/or PVC pipe.

Inquiries regarding emergency orders are welcome and orders can normally be shipped within 24 to 48 hours.



### FTS Dimensions

| FLANGED<br>OUTLET<br>SIZE | NOMINAL DIMENSIONS - INCHES |         |         |     | No.<br>OF<br>BOLTS |
|---------------------------|-----------------------------|---------|---------|-----|--------------------|
|                           | A                           | B       | C       | D   |                    |
| 4"                        | 5-1/32"                     | 4-1/4"  | 5-3/16" | 12" | 6                  |
| 6"                        | 7-1/32"                     | 6-5/16" | 5-3/16" | 12" | 6                  |
| 8"                        | 9-1/32"                     | 8-1/4"  | 5-3/16" | 16" | 8                  |
| 10"                       | 11-1/32"                    | 10-1/4" | 5-3/16" | 20" | 10                 |
| 12"                       | 13-1/32"                    | 12-1/4" | 5-3/16" | 24" | 12                 |
| 16"                       | 17-19/64"                   | 15-1/2" | 6-1/4"  | 32" | 16                 |

**Note:** Smaller size on size units may require 1/2" undersize cutter. See notes on next page. Use 1" undersize cutter for flanges 14" and larger. Over-sized outlets, B dimension, are available by special request.

See Catalog Section N for Style FWS Ford Steel Weld-On Tapping Sleeves.

# Ford Steel Tapping Sleeves

## Styles FTS and FTSC (Epoxy Coated) Tapping Sleeves

The FTS Style Tapping Sleeve is furnished with low alloy steel bolts and with a shop coat suitable for most field applied coatings. Stainless steel bolts may be substituted for low alloy bolts by adding "-SH" to the FTS Catalog Number. For maximum corrosion resistance the FTSC Style has approximately 12 mils of fusion applied epoxy and stainless steel bolts.

**To Order:** Add Flange size to the appropriate Sleeve number. For example: A 4" Flange on 6" cast iron pipe would be FTS-716-4.

**Option: SH** Standard FTS with **Stainless Steel nuts and bolts:** add "-SH" to the Catalog Number. Example: FTS-716-4-SH.

| NOM.<br>PIPE<br>SIZE | SLEEVE<br>O.D.<br>RANGE   | SLEEVE<br>NUMBER  | EPOXY<br>COATED<br>SLEEVE  | BY | FLANGE<br>SIZE<br>CODE | APPROX.<br>WT. LBS. |
|----------------------|---|---|--|----|------------------------|---------------------|
| 4"                   | 4.50<br>4.80  | * FTS-480   | * FTSC-480   |    | 4                      | 45                  |
| 6"                   | 6.57-6.73<br>6.83-7.16<br>7.20-7.60<br>7.40-7.73                        | * FTS-673<br>FTS-716<br>FTS-760<br>FTS-773                  | * FTSC-673<br>FTSC-716<br>FTSC-760<br>FTSC-773                   |    | 4                      | 70                  |
|                      |   |   |  |    | 6                      | 75                  |
| 8"                   | 7.95-8.05<br>8.36-8.75<br>8.73-9.12<br>8.89-9.37<br>9.27-9.69           | ** FTS-805<br>* FTS-875<br>FTS-912<br>FTS-937<br>FTS-969    | ** FTSC-805<br>* FTSC-875<br>FTSC-912<br>FTSC-937<br>FTSC-969    |    | 4                      | 76                  |
|                      |   |   |  |    | 6                      | 86                  |
|                      |   |   |  |    | 8                      | 93                  |
| 10"                  | 9.95-10.10<br>10.45-10.88<br>11.03-11.47<br>11.36-11.80                 | ** FTS-1010<br>FTS-1088<br>FTS-1147<br>FTS-1180             | ** FTSC-1010<br>FTSC-1088<br>FTSC-1147<br>FTSC-1180              |    | 4                      | 84                  |
|                      |   |   |  |    | 6                      | 93                  |
|                      |   |   |  |    | 8                      | 130                 |
|                      |   |   |  |    | 10                     | 139                 |
| 12"                  | 11.76-12.20<br>12.42-12.88<br>13.13-13.60<br>13.60-14.09<br>14.10-14.58 | ** FTS-1220<br>FTS-1288<br>FTS-1360<br>FTS-1409<br>FTS-1458 | ** FTSC-1220<br>FTSC-1288<br>FTSC-1360<br>FTSC-1409<br>FTSC-1458 |    | 4                      | 92                  |
|                      |   |   |  |    | 6                      | 100                 |
|                      |   |   |  |    | 8                      | 140                 |
|                      |   |   |  |    | 10                     | 190                 |
|                      |   |   |  |    | 12                     | 199                 |
| 14"-16"              | 14.59-15.08<br>15.23-15.72<br>15.73-16.22<br>16.30-16.73<br>16.74-17.26 | FTS-1508<br>FTS-1572<br>FTS-1622<br>FTS-1673<br>FTS-1726    | FTSC-1508<br>FTSC-1572<br>FTSC-1622<br>FTSC-1673<br>FTSC-1726    |    | 4                      | 99                  |
|                      |   |   |  |    | 6                      | 110                 |
|                      |   |   |  |    | 8                      | 152                 |
|                      |   |   |  |    | 10                     | 203                 |
|                      |   |   |  |    | 12                     | 228                 |
| 16"-18"              | 17.33-17.87<br>17.88-18.43<br>18.46-19.03<br>18.87-19.45<br>19.41-20.01 | FTS-1787<br>FTS-1843<br>FTS-1903<br>FTS-1945<br>FTS-2001    | FTSC-1787<br>FTSC-1843<br>FTSC-1903<br>FTSC-1945<br>FTSC-2001    |    | 4                      | 105                 |
|                      |   |   |  |    | 6                      | 116                 |
|                      |   |   |  |    | 8                      | 162                 |
|                      |   |   |  |    | 10                     | 215                 |
|                      |   |   |  |    | 12                     | 240                 |
|                      |   |   |  |    | 16                     | 270                 |
| 18"-20"              | 19.88-20.48<br>20.29-20.92<br>20.93-21.57<br>21.51-22.15<br>22.16-22.81 | FTS-2048<br>FTS-2092<br>FTS-2157<br>FTS-2215<br>FTS-2281    | FTSC-2048<br>FTSC-2092<br>FTSC-2157<br>FTSC-2215<br>FTSC-2281    |    | 4                      | 120                 |
|                      |   |   |  |    | 6                      | 135                 |
|                      |   |   |  |    | 8                      | 185                 |
|                      |   |   |  |    | 10                     | 240                 |
|                      |   |   |  |    | 12                     | 270                 |
|                      |   |   |  |    | 16                     | 300                 |
| 20"-24"              | 22.78-23.45<br>23.46-24.16<br>24.15-24.85<br>24.82-25.52                | FTS-2345<br>FTS-2416<br>FTS-2485<br>FTS-2552                | FTSC-2345<br>FTSC-2416<br>FTSC-2485<br>FTSC-2552                 |    | 4                      | 131                 |
|                      |   |   |  |    | 6                      | 142                 |
|                      |   |   |  |    | 8                      | 196                 |
|                      |   |   |  |    | 10                     | 257                 |
|                      |   |   |  |    | 12                     | 283                 |
|                      |   |   |  |    | 16                     | 313                 |
| 24"                  | 25.71-26.41<br>26.55-27.25<br>27.26-27.96<br>28.14-28.84                | FTS-2641<br>FTS-2725<br>FTS-2796<br>FTS-2884                | FTSC-2641<br>FTSC-2725<br>FTSC-2796<br>FTSC-2884                 |    | 4                      | 147                 |
|                      |   |   |  |    | 6                      | 155                 |
|                      |   |   |  |    | 8                      | 217                 |
|                      |   |   |  |    | 10                     | 284                 |
|                      |   |   |  |    | 12                     | 300                 |
|                      |   |   |  |    | 16                     | 330                 |
| 30"                  | 29.78-30.48<br>30.48-31.18<br>31.52-32.22                               | FTS-3048<br>FTS-3118<br>FTS-3222                            | FTSC-3048<br>FTSC-3118<br>FTSC-3222                              |    | 4                      | 152                 |
|                      |   |   |  |    | 6                      | 160                 |
|                      |   |   |  |    | 8                      | 222                 |
|                      |   |   |  |    | 10                     | 290                 |
|                      |   |   |  |    | 12                     | 308                 |
|                      |   |   |  |    | 16                     | 338                 |

**Note:** Use 1" undersize cutter for flanges 14" and larger. Oversized outlets are available by special request P.O.A.

\* These units for size on size taps may require a 1/2" under size cutter.

\*\* Size on size for this range not available.

# S70, S71 Specifications

## Ford Brass Saddles

### Hinged S70

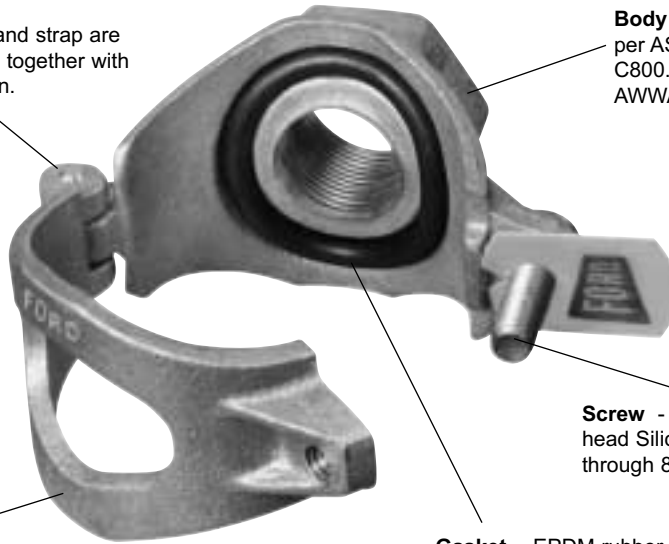
**Hinge Pin** - Body and strap are permanently joined together with a Silicon Bronze pin.

**Body** - 85-5-5-5 Brass Alloy as per ASTM B-62 and AWWA C800. Threads may be FIP, AWWA, or BSP.

**Screw** - 5/16" Diameter, Slotted 1/2" hex head Silicon Bronze bolt used on 1-1/2" through 8".

**Strap** - 85-5-5-5 Brass Alloy as per ASTM B62 and AWWA C800. Bottom strap is tapped to eliminate need for nut.

**Gasket** - EPDM rubber, ASTM D2000 O-ring design.



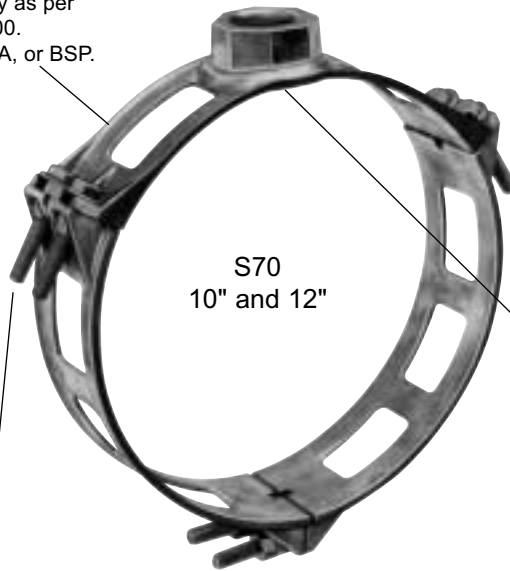
### Bolted S70

**Body** - 85-5-5-5 Brass Alloy as per ASTM B62 and AWWA C800. Threads may be FIP, AWWA, or BSP.

S70  
10" and 12"

**Gasket** - O-ring Design or EPDM rubber, ASTM D2000

**Bolts** - 1/2" (3/4" hex head) Silicon Bronze Bolts, Nuts and Washers.



# Ford Brass Saddles Style S70

**For Standard PVC Pipe**

Ford Saddles are cast from certified 85-5-5-5 waterworks brass and machined to rigid specifications. Their ample width and preformed radius provides greater distribution of clamping pressures to avoid crushing the pipe.

Design "A" (hinged) saddles install as a single unit with no loose parts to lose in the ditch. (Designs may vary, see below.) The upper and lower castings are permanently hinged together with silicon bronze pin and the silicon bronze bolt has a retainer on it to prevent loss during shipment and installation. The retainer tag identifies the tap style and size. The lower casting is tapped to accept the bolt so that nuts are not required. PVC pipe may expand under high pressure causing damage to over-tightened saddles. BSP, British Standard Pipe, threads are available by request.

Ford's convenient marking system quickly and easily identifies the type of thread in the boss. For AWWA tapered thread the top edge of the boss has a machined groove around the top outside edge while the boss for iron pipe thread is smooth.

**Design A**



**Design B**



**Design C**



| PVC PIPE SIZE | ACTUAL PIPE O.D. | AWWA CAT. NO. S70 | IP TAP CAT. NO. S71 | TAP SIZE | DESIGN | APPROX. WT. LBS. | STD. PKG. QTY. |
|---------------|------------------|-------------------|---------------------|----------|--------|------------------|----------------|
| 1-1/2"        | 1.900            | S70-153           | S71-153             | 3/4"     | A      | 1.0              | 10             |
| 2"            | 2.375            | S70-201           | S71-201             | 1/2"     | A      | 1.4              | 6              |
|               |                  | S70-203           | S71-203             | 3/4"     | A      | 1.1              | 6              |
|               |                  | S70-204           | S71-204             | 1"       | A      | 1.0              | 6              |
|               |                  | S70-205           | S71-205             | 1-1/4"   | B      | 3.6              | -              |
|               |                  | S70-206           | S71-206             | 1-1/2"   | B      | 3.4              | -              |
| 2-1/2"        | 2.875            | S70-253           | S71-253             | 3/4"     | A      | 1.7              | 10             |
|               |                  | S70-254           | S71-254             | 1"       | A      | 1.6              | 10             |
|               |                  | S70-255           | S71-255             | 1-1/4"   | B      | 3.8              | -              |
|               |                  | S70-256           | S71-256             | 1-1/2"   | B      | 3.6              | -              |
|               |                  | S70-301           | S71-301             | 1/2"     | A      | 1.9              | 4              |
| 3"            | 3.500            | S70-303           | S71-303             | 3/4"     | A      | 1.8              | 4              |
|               |                  | S70-304           | S71-304             | 1"       | A      | 1.7              | 4              |
|               |                  | -                 | S71-307             | 2"       | B      | 3.5              | 4              |
|               |                  | S70-401           | S71-401             | 1/2"     | A      | 2.2              | 2              |
|               |                  | S70-403           | S71-403             | 3/4"     | A      | 2.1              | 2              |
| 4"            | 4.500            | S70-404           | S71-404             | 1"       | A      | 2.0              | 2              |
|               |                  | S70-406           | S71-406             | 1-1/2"   | A      | 4.1              | 4              |
|               |                  | S70-407           | S71-407             | 2"       | A      | 4.8              | 6              |
|               |                  | S70-503           | S71-503             | 3/4"     | A      | 2.6              | 4              |
|               |                  | S70-504           | S71-504             | 1"       | A      | 2.5              | 4              |
| 5"            | 5.563            | S70-601           | S71-601             | 1/2"     | A      | 2.9              | 6              |
|               |                  | S70-603           | S71-603             | 3/4"     | A      | 2.8              | 6              |
|               |                  | S70-604           | S71-604             | 1"       | A      | 2.8              | 6              |
|               |                  | S70-606           | S71-606             | 1-1/2"   | A      | 5.9              | 4              |
|               |                  | S70-607           | S71-607             | 2"       | A      | 5.1              | 4              |
| 6"            | 6.625            | S70-803           | S71-803             | 3/4"     | A      | 3.6              | 6              |
|               |                  | S70-804           | S71-804             | 1"       | A      | 3.6              | 6              |
|               |                  | S70-806           | S71-806             | 1-1/2"   | A      | 5.8              | 4              |
|               |                  | S70-807           | S71-807             | 2"       | A      | 5.6              | 4              |
|               |                  | S70-1003          | S71-1003            | 3/4"     | C      | 7.0              | 5              |
| 8"            | 8.625            | S70-1004          | S71-1004            | 1"       | C      | 7.0              | 5              |
|               |                  | S70-1006          | S71-1006            | 1-1/2"   | C      | 10.4             | 2              |
|               |                  | S70-1007          | S71-1007            | 2"       | C      | 10.7             | 2              |
|               |                  | S70-1203          | S71-1203            | 3/4"     | C      | 8.1              | 3              |
|               |                  | S70-1204          | S71-1204            | 1"       | C      | 7.8              | 3              |
| 10"           | 10.75            | S70-1206          | S71-1206            | 1-1/2"   | C      | 11.3             | 2              |
|               |                  | S70-1207          | S71-1207            | 2"       | C      | 10.9             | 2              |
|               |                  |                   |                     |          |        |                  |                |

**Saddle Style, Design and Bolt Chart**

| SADDLE STYLE | PVC PIPE SIZE  | TAP SIZE          | DESIGN  | No. OF BOLTS | BOLT CAT. No.       |
|--------------|----------------|-------------------|---------|--------------|---------------------|
| S70 / S71    | 1-1/2" thru 8" | 3/4" and 1"       | Hinged  | 1 per saddle | SADDLE-SCREW-800181 |
|              | 2" and 2-1/2"  | 1-1/4" and 1-1/2" | 2 Piece | 2 per piece  | SADDLE-SCREW-800181 |
|              | 3"             | 2"                | 2 Piece | 2 per piece  | SADDLE-BOLT-800224  |
|              | 4" thru 8"     | 1-1/2" and 2"     | Hinged  | 2 per saddle | SADDLE-SCREW-800181 |
|              | 10" and 12"    | 3/4" and 1"       | 3 Piece | 1 per piece  | SADDLE-BOLT-800287  |
|              | 10" and 12"    | 1-1/2" and 2"     | 3 Piece | 2 per piece  | SADDLE-BOLT-800287  |

**Saddle Bolt Sizes**

SADDLE-SCREW-800181: 5/16" x 1-1/2"  
 SADDLE-BOLT-800287: 1/2" x 3"  
 SADDLE-BOLT-800224: 3/8" x 1-1/2"

# S90, S91 Specifications

## Ford Brass Saddles

### Hinged S90

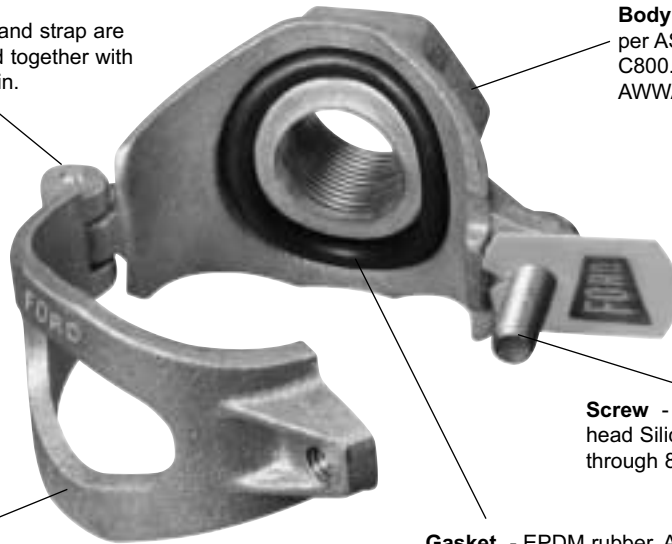
**Hinge Pin** - Body and strap are permanently joined together with a Silicon Bronze pin.

**Body** - 85-5-5-5 Brass Alloy as per ASTM B62 and AWWA C800. Threads may be FIP, AWWA, or BSP.

**Screw** - 5/16" Diameter, Slotted 1/2" hex head Silicon Bronze bolt used on 1-1/2" through 8".

**Strap** - 85-5-5-5 Brass Alloy as per ASTM B62 and AWWA C800. Bottom strap is tapped to eliminate need for nut.

**Gasket** - EPDM rubber, ASTM D2000 O-ring design.



### Bolted S90

**Body** - 85-5-5-5 Brass Alloy as per ASTM B62 and AWWA C800. Threads may be FIP, AWWA, or BSP.

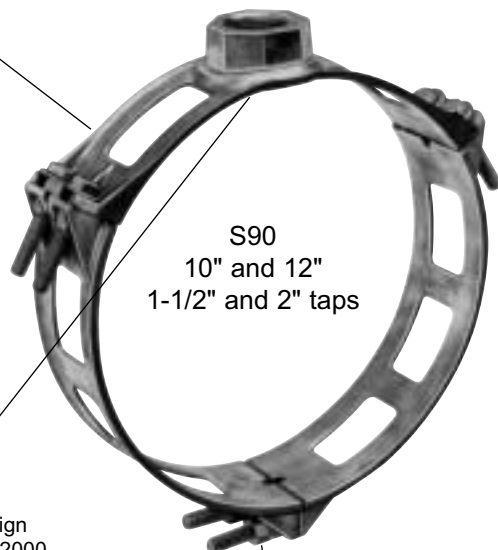
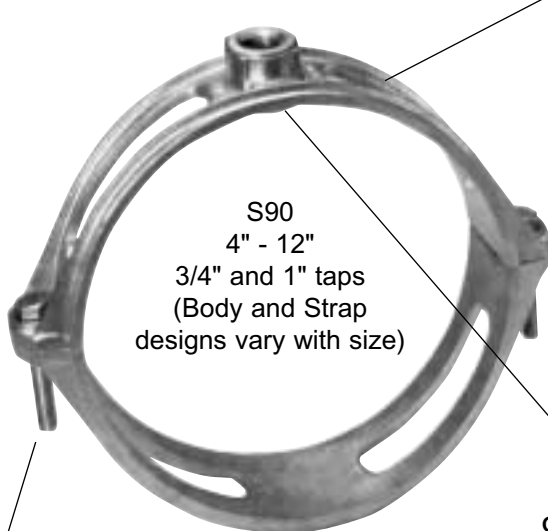
S90  
4" - 12"  
3/4" and 1" taps  
(Body and Strap  
designs vary with size)

S90  
10" and 12"  
1-1/2" and 2" taps

**Gasket** - O-ring Design  
EPDM rubber, ASTM D2000.

**Bolts** - 1/2" (3/4" hex head) or 3/8" (9/16" hex head) Silicon Bronze Bolts. Body casting tapped to eliminate need for separate nut.

**Bolts** - 1/2" diameter (3/4" hex head) Silicon Bronze Bolts, Nuts and Washers.



# Ford Brass Saddles Style S90




**For C900 PVC Pipe**

Ford Saddles are cast from certified 85-5-5-5 waterworks brass and machined to rigid specifications. Their ample width and preformed radius provides greater distribution of clamping pressures to avoid crushing the pipe.

Design "A" (hinged) saddles install as a single unit with no loose parts to lose in the ditch. (Designs may vary, see below.) The upper and lower castings are permanently hinged together with silicon bronze pin and the silicon bronze bolt has a retainer on it to prevent loss during shipment and installation. The retainer tag identifies the tap style and size. The lower casting is tapped to accept the bolt so that nuts are not required. PVC pipe may expand under high pressure causing damage to over-tightened saddles. BSP, British Standard Pipe, threads are available by request.

Ford's convenient marking system quickly and easily identifies the type of thread in the boss. For AWWA tapered thread the top edge of the boss has a machined groove around the top outside edge while the boss for iron pipe thread is smooth.

## S90 and S91 Saddles for C900 PVC Pipe

|  | PVC PIPE SIZE | ACTUAL PIPE O.D. | AWWA CAT. NO. S90 | IP TAP CAT. NO. S91 | TAP SIZE | DESIGN | APPROX. WT. LBS. | STD. PKG. QTY. |
|--|---------------|------------------|-------------------|---------------------|----------|--------|------------------|----------------|
| <b>Design A</b><br><br><br><b>Hinged Design</b>           | 2"            | 2.50             | S90-201           | S91-201             | 1/2"     | A      | .9               | 6              |
|  |               |                  | S90-203           | S91-203             | 3/4"     | A      | 1.1              | 6              |
|  | 4"            | 4.80             | S90-401           | S91-401             | 1/2"     | A      | -                | -              |
|  |               |                  | S90-403           | S91-403             | 3/4"     | A      | 1.8              | 10             |
|  |               |                  | S90-404           | S91-404             | 1"       | A      | 2.0              | 6              |
|  |               |                  | S90-406           | S91-406             | 1-1/2"   | A      | 6.5              | 6              |
|  |               |                  | S90-407           | S91-407             | 2"       | A      | 6.4              | 6              |
| <b>Design B</b><br><br><br><b>2-Piece Bolted Design</b>  | 6"            | 6.90             | S90-601           | -                   | 1/2"     | A      | -                | -              |
|  |               |                  | S90-603           | S91-603             | 3/4"     | A      | 2.6              | 5              |
|  |               |                  | S90-604           | S91-604             | 1"       | A      | 2.6              | 5              |
|  |               |                  | S90-606           | S91-606             | 1-1/2"   | A      | 8.9              | 3              |
|  |               |                  | S90-607           | S91-607             | 2"       | A      | 7.3              | 3              |
|  | 8"            | 9.05             | S90-803           | S91-803             | 3/4"     | A      | 2.8              | 5              |
|  |               |                  | S90-804           | S91-804             | 1"       | A      | 3.2              | 5              |
|  |               |                  | S90-806           | S91-806             | 1-1/2"   | A      | 8.0              | 3              |
|  |               |                  | S90-807           | S91-807             | 2"       | A      | 8.5              | 3              |
|  | 10"           | 11.10            | S90-1003          | S91-1003            | 3/4"     | B      | 9.3              | 5              |
|  |               |                  | S90-1004          | S91-1004            | 1"       | B      | 9.2              | 5              |
|  |               |                  | S90-1006          | S91-1006            | 1-1/2"   | C      | 10.5             | 2              |
|  |               |                  | S90-1007          | S91-1007            | 2"       | C      | 10.5             | 2              |
| <b>Design C</b><br><br><br><b>3-Piece Bolted Design</b> | 12"           | 13.20            | S90-1203          | S91-1203            | 3/4"     | B      | 11.1             | 3              |
|  |               |                  | S90-1204          | S91-1204            | 1"       | B      | 11.0             | 3              |
|  |               |                  | S90-1206          | S91-1206            | 1-1/2"   | C      | 11.5             | 2              |
|  |               |                  | S90-1207          | S91-1207            | 2"       | C      | 11.0             | 2              |

## S902 and S912 Two-Piece Bolted Saddles for C900 PVC Pipe

|    |      |          |          |      |   |     |   |
|----|------|----------|----------|------|---|-----|---|
| 4" | 4.80 | S902-403 | S912-403 | 3/4" | B | 3.2 | 5 |
|    |      | S902-404 | S912-404 | 1"   | B | 2.9 | 5 |
| 6" | 6.90 | S902-603 | S912-603 | 3/4" | B | 4.6 | 5 |
|    |      | S902-604 | S912-604 | 1"   | B | 4.5 | 5 |
| 8" | 9.05 | S902-803 | S912-803 | 3/4" | B | 5.5 | 5 |
|    |      | S902-804 | S912-804 | 1"   | B | 5.4 | 5 |

Note: 10" and 12" S90 and S91 Saddles with 3/4" and 1" Taps are also a Two-Piece Bolted Design  
Larger saddles, Style 202BS, designed for C900 PVC are listed on page 17.

## Saddle Style, Design and Bolt Chart

| SADDLE STYLE | PVC PIPE SIZE | TAP SIZE      | DESIGN  | NO. OF BOLTS | SADDLE SCREW AND BOLT SIZES | BOLT CAT. No.       |
|--------------|---------------|---------------|---------|--------------|-----------------------------|---------------------|
| S90 / S91    | 2" thru 8"    | 3/4" and 1"   | Hinged  | 1 per saddle | 5/16" x 1-1/2"              | SADDLE-SCREW-800181 |
|              | 4" thru 8"    | 1-1/2" and 2" | Hinged  | 2 per saddle | 5/16" x 1-1/2"              | SADDLE-SCREW-800181 |
|              | 10" and 12"   | 3/4" and 1"   | 2 Piece | 1 per piece  | 1/2" x 3"                   | SADDLE-BOLT-800287  |
|              | 10" and 12"   | 1-1/2" and 2" | 3 Piece | 2 per piece  | 1/2" x 3"                   | SADDLE-BOLT-800287  |
| S902 / S912  | 4" thru 8"    | 3/4" and 1"   | 2 Piece | 1 per piece  | 3/8" x 2"                   | SADDLE-SCREW-800344 |

# 101B, 202B Specifications

For 3/4" through 2" Taps

## 101B

**Body** - 85-5-5-5 Brass Alloy as per ASTM B62 and AWWA C800. Threads may be FIP, AWWA, or BSP.

**Nuts** - 5/8" 85-5-5-5 Brass Alloy as per ASTM B62 and AWWA C800 with integral washers.

One side of Saddle Body has a closed bolt lug for easy installation.

**Strap** - 5/8" high quality silicon bronze flattened to provide a wider bearing surface against pipe.

**Gasket** - Buna-N rubber. ASTM D2000

## 202B

**Nuts** - 5/8" 85-5-5-5 Brass Alloy as per ASTM B62 and AWWA C800 with integral washers.

One side of Saddle Body has closed bolt lugs for easy installation.

**Straps** - 5/8" high quality silicon bronze flattened to provide a wider bearing surface against pipe.

**Body** - 85-5-5-5 Brass Alloy as per ASTM B62 and AWWA C800. Threads may be FIP, AWWA, or BSP.

**Gasket** - Buna-N rubber. ASTM-D2000

### OUTLET THREAD TAP CODE

| CC (AWWA) THREAD |          | FIP THREAD |          | BSP THREAD |          |
|------------------|----------|------------|----------|------------|----------|
| THREAD           | CODE NO. | THREAD     | CODE NO. | THREAD     | CODE NO. |
| 3/4" CC          | CC3      | 3/4" IP    | IP3      | 3/4" BSP   | BSP3     |
| 1" CC            | CC4      | 1" IP      | IP4      | 1" BSP     | BSP4     |
| 1-1/2" CC        | CC6      | 1-1/2" IP  | IP6      | 1-1/2" BSP | BSP6     |
| 2" CC            | CC7      | 2" IP      | IP7      | 2" BSP     | BSP7     |

# Ford Brass Saddles Styles 101B and 202B

**For 3/4" through 2" Taps**

Ford's single strap 101B and double strap 202B brass saddles are designed with built-in flexibility to cover asbestos-cement and/or cast iron size pipe. The body of the saddle is sized to fit class 200 asbestos-cement but will bend during installation to conform to the smaller size cast iron or ductile iron material. This eliminates double inventory and guess work when going to the job site.

The body and the nuts of Ford brass saddles are cast from certified 85-5-5-5 water works brass conforming to the AWWA C800 standard. The straps are high quality silicon bronze flattened to provide a wide bearing surface against the pipe. The large Buna-N rubber gasket is grooved to conform to the pipe surface and bonded in place for easy installation.

Ford's convenient marking system quickly and easily identifies the type of thread in the boss. For AWWA tapered thread the boss has a machined groove around the top outside edge while the boss for iron pipe thread is smooth.

## Style 101B Single Strap Brass Saddles

**For 3/4" and 1" Taps**



| NOM. PIPE SIZE | O.D. RANGE  | CATALOG NUMBER       | APPROX. WT. LBS. | STD. PKG. QTY. |
|----------------|-------------|----------------------|------------------|----------------|
| 4"             | 4.80-5.40   | <b>101B-540-Tap</b>  | 3.0              | 10             |
| 6"             | 6.90-7.50   | <b>101B-750-Tap</b>  | 3.8              | 10             |
| 8"             | 9.05-9.62   | <b>101B-962-Tap</b>  | 4.4              | 10             |
| 10"            | 11.10-12.12 | <b>101B-1212-Tap</b> | 5.4              | 1              |
| 12"            | 13.20-14.38 | <b>101B-1438-Tap</b> | 5.9              | 1              |

**To Order:** Add Tap Code Number from the table at the bottom of page 14 to the Catalog Number. For example, a saddle for 6" cast iron pipe with a 3/4" CC tap would be 101B-750-CC3. A saddle for 8" cast iron pipe with 1" iron pipe tap would be a 101B-962-IP4.

## Style 202B Double Strap Brass Saddles

**For 3/4" through 2" Taps**



| NOM. PIPE SIZE | O.D. RANGE  | CATALOG NUMBER       | APPROX. WT. LBS. 3/4" & 1" TAPS | STD. PKG. QTY. | APPROX. WT. LBS. 1-1/2" | STD. PKG. QTY. | APPROX. WT. LBS. 2" | STD. PKG. QTY. |
|----------------|-------------|----------------------|---------------------------------|----------------|-------------------------|----------------|---------------------|----------------|
| * 4"           | 4.80-5.40   | <b>202B-540-Tap</b>  | 6.6                             | 5              | 7.1                     | 6              | N/A                 | N/A            |
|                | 4.80-5.10   | <b>202B-510-Tap</b>  | N/A                             | N/A            | N/A                     | N/A            | 7.3                 | 6              |
|                | 5.10-5.40   | <b>202B-540-Tap</b>  | N/A                             | N/A            | N/A                     | N/A            | 7.3                 | 6              |
| 6"             | 6.90-7.50   | <b>202B-750-Tap</b>  | 7.7                             | 4              | 7.9                     | 4              | 8.4                 | 4              |
| 8"             | 9.05-9.62   | <b>202B-962-Tap</b>  | 8.8                             | 5              | 9.3                     | 4              | 9.4                 | 4              |
| 10"            | 11.10-12.12 | <b>202B-1212-Tap</b> | 10.7                            | 6              | 11.3                    | 4              | 11.3                | 4              |
| 12"            | 13.20-14.38 | <b>202B-1438-Tap</b> | 11.8                            | 3              | 11.9                    | 3              | 13.3                | 3              |
| 14"            | 15.30-16.25 | <b>202B-1625-Tap</b> | 18.0                            | 1              | 17.5                    | 1              | 17.5                | 1              |
|                | 16.30-17.25 | <b>202B-1725-Tap</b> | 19.1                            | 1              | 18.6                    | 1              | 18.6                | 1              |
| 16"            | 17.40-18.40 | <b>202B-1840-Tap</b> | 23.0                            | 1              | 22.5                    | 1              | 22.5                | 1              |
|                | 18.50-19.25 | <b>202B-1925-Tap</b> | 24.0                            | 1              | 23.5                    | 1              | 23.5                | 1              |
| 18"            | 19.50-20.50 | <b>202B-2050-Tap</b> | 25.0                            | 1              | 24.5                    | 1              | 24.5                | 1              |
| 20"            | 21.20-22.20 | <b>202B-2220-Tap</b> | 25.5                            | 1              | 25.0                    | 1              | 25.0                | 1              |
|                | 22.50-23.50 | <b>202B-2350-Tap</b> | 25.7                            | 1              | 25.2                    | 1              | 25.2                | 1              |
| 24"            | 23.80-24.80 | <b>202B-2480-Tap</b> | 26.0                            | 1              | 25.5                    | 1              | 25.5                | 1              |
|                | 25.60-26.50 | <b>202B-2650-Tap</b> | 26.5                            | 1              | 26.0                    | 1              | 26.0                | 1              |
| 30"            | 31.74-32.74 | <b>202B-3274-Tap</b> | 27.0                            | 1              | 26.5                    | 1              | 26.5                | 1              |

\* **Please Note:** 4" saddles with 2" taps have limited range as listed above, i.e. 4.80-5.10 and 5.10-5.40. All other tap sizes have a standard range of 4.80-5.40.

**To Order:** Add Tap Code Number from the table at the bottom of page 14 to the Catalog Number. For example, a saddle for 12" cast iron pipe with 1" CC tap would be 202B-1438-CC4.

# 101BS, 202BS Specifications

For 3/4" through 2" Taps

## 101BS

**Nuts and Washers** - 5/8" fluorocarbon coated heavy hex nuts and washers made from 18-8 type 304 Stainless Steel.

**Body** - 85-5-5-5 Brass Alloy as per ASTM B62 and AWWA C800. Threads may be FIP, AWWA, or BSP.

One side of Saddle Body has a closed bolt lug for easy installation.

**Gasket** - Buna-N rubber. ASTM-D2000

**Band and Bolts** - Wide band and 5/8" UNC threaded bolts of 18-8 Stainless Steel. Welds are fully passivated for corrosion resistance.

2" Minimum width.

## 202BS

**Nuts and Washers** - 5/8" fluorocarbon coated heavy hex nuts and washers made from 18-8 type 304 Stainless Steel.

**Body** - 85-5-5-5 Brass Alloy as per ASTM B62 and AWWA C800. Threads may be FIP, AWWA, or BSP.

One side of Saddle Body has closed bolt lugs for easy installation.

**Gasket** - Buna-N rubber. ASTM-D2000

**Band and Bolts** - Wide band and 5/8" UNC threaded bolts of 18-8 Stainless Steel. Welds are fully passivated for corrosion resistance.

3-1/4" Minimum width.

### OUTLET THREAD TAP CODE

| CC (AWWA) THREAD |          | FIP THREAD |          | BSP THREAD |          |
|------------------|----------|------------|----------|------------|----------|
| THREAD           | CODE No. | THREAD     | CODE No. | THREAD     | CODE No. |
| 3/4" CC          | CC3      | 3/4" IP    | IP3      | 3/4" BSP   | BSP3     |
| 1" CC            | CC4      | 1" IP      | IP4      | 1" BSP     | BSP4     |
| 1-1/2" CC        | CC6      | 1-1/2" IP  | IP6      | 1-1/2" BSP | BSP6     |
| 2" CC            | CC7      | 2" IP      | IP7      | 2" BSP     | BSP7     |

# Ford Brass Saddles Styles 101BS and 202BS

**With Stainless Steel Band and Bolts For C900 PVC Pipe  
For 3/4" through 2" Taps**

The 101BS and 202BS style service saddles incorporate stainless steel bands in place of the standard silicon bronze straps. This combination of brass and stainless provides the perfect answer for strength and flexibility. The stainless easily conforms to the surface of PVC pipe and the brass provides the required strength to support service lines. The 101BS and 202BS style saddles are ideally suited for tapping C900 PVC pipe. These saddles conform to the recommendation of Uni-Bell and AWWA.

## Style 101BS Single Band Saddles for C900 PVC Pipe For 3/4" and 1" Taps

**To Order:** Add Tap Code Number from the table at the bottom of page 16 to Catalog Number.  
Example: A saddle for 12" C900 PVC with 1" CC tap would be 101BS-1320-CC4.



| NOM.<br>PIPE<br>SIZE | PIPE<br>O.D. | CATALOG<br>NUMBER | APPROX.<br>WT.<br>LBS. | STD.<br>PKG.<br>QTY. |
|----------------------|--------------|-------------------|------------------------|----------------------|
| 4"                   | 4.80         | 101BS-480-Tap     | 3.0                    | 10                   |
| 6"                   | 6.90         | 101BS-690-Tap     | 3.8                    | 10                   |
| 8"                   | 9.05         | 101BS-905-Tap     | 4.4                    | 10                   |
| 10"                  | 11.10        | 101BS-1110-Tap    | 5.4                    | 1                    |
| 12"                  | 13.20        | 101BS-1320-Tap    | 5.9                    | 1                    |

## Style 202BS Double Band Saddles for C900 PVC Pipe For 3/4" through 2" Taps

**To Order:** Add Tap Code Number from the table at the bottom of page 16 to Catalog Number.  
Example: A saddle for 12" C900 PVC with 1" CC tap would be 202BS-1320-CC4.



| NOM.<br>PIPE<br>SIZE | PIPE<br>O.D. | CATALOG<br>NUMBER | APPROX.<br>WT. LBS.<br>3/4" & 1" TAPS | STD.<br>PKG.<br>QTY. | APPROX.<br>WT. LBS.<br>1-1/2" & 2" TAPS | STD.<br>PKG.<br>QTY. |
|----------------------|--------------|-------------------|---------------------------------------|----------------------|---|----------------------|
| 4"                   | 4.80         | 202BS-480-Tap     | 6.6                                   | 5                    | 7.6                                     | 6                    |
| 6"                   | 6.90         | 202BS-690-Tap     | 7.7                                   | 4                    | 8.8                                     | 4                    |
| 8"                   | 9.05         | 202BS-905-Tap     | 8.8                                   | 5                    | 9.8                                     | 4                    |
| 10"                  | 11.10        | 202BS-1110-Tap    | 10.7                                  | 4                    | 12.2                                    | 4                    |
| 12"                  | 13.20        | 202BS-1320-Tap    | 11.8                                  | 3                    | 13.3                                    | 3                    |
| 14"                  | 15.30        | 202BS-1530-Tap    | 18.0                                  | 1                    | 17.5                                    | 1                    |
| 16"                  | 17.40        | 202BS-1740-Tap    | 23.0                                  | 1                    | 22.5                                    | 1                    |
| 18"                  | 19.50        | 202BS-1950-Tap    | 25.0                                  | 1                    | 24.5                                    | 1                    |
| 20"                  | 21.60        | 202BS-2160-Tap    | 25.5                                  | 1                    | 25.0                                    | 1                    |
| 24"                  | 25.80        | 202BS-2580-Tap    | 26.0                                  | 1                    | 25.5                                    | 1                    |
| 30"                  | 32.00        | 202BS-3200-Tap    | 27.0                                  | 1                    | 26.5                                    | 1                    |

## Style 202BS Double Band Brass Saddles For 3/4" through 2" Taps

**To Order:** Add Tap Code Number from the table at the bottom of page 16 to the Catalog Number.  
For example, a saddle for 20" cast iron pipe with 1" CC tap would be 202B-2220-CC4.



| NOM.<br>PIPE<br>SIZE | O.D.<br>RANGE | CATALOG<br>NUMBER | APPROX.<br>WT. LBS.<br>3/4" & 1" TAPS | STD.<br>PKG.<br>QTY. | APPROX.<br>WT. LBS.<br>1-1/2" & 2" TAPS | STD.<br>PKG.<br>QTY. |
|----------------------|---------------|-------------------|---------------------------------------|----------------------|---|----------------------|
| 14"                  | 15.30-16.25   | 202BS-1625-Tap    | 18.0                                  | 1                    | 17.5                                    | 1                    |
|                      | 16.30-17.25   | 202BS-1725-Tap    | 19.1                                  | 1                    | 18.6                                    | 1                    |
| 16"                  | 17.40-18.40   | 202BS-1840-Tap    | 23.0                                  | 1                    | 22.5                                    | 1                    |
|                      | 18.50-19.25   | 202BS-1925-Tap    | 24.0                                  | 1                    | 23.5                                    | 1                    |
| 18"                  | 19.50-20.50   | 202BS-2050-Tap    | 25.0                                  | 1                    | 24.5                                    | 1                    |
|                      | 21.20-22.20   | 202BS-2220-Tap    | 25.5                                  | 1                    | 25.0                                    | 1                    |
| 20"                  | 22.50-23.50   | 202BS-2350-Tap    | 25.7                                  | 1                    | 25.2                                    | 1                    |
|                      | 23.80-24.80   | 202BS-2480-Tap    | 26.0                                  | 1                    | 25.5                                    | 1                    |
| 24"                  | 25.60-26.50   | 202BS-2650-Tap    | 26.5                                  | 1                    | 26.0                                    | 1                    |
|                      | 31.74-32.74   | 202BS-3274-Tap    | 27.0                                  | 1                    | 26.5                                    | 1                    |

# Specifications

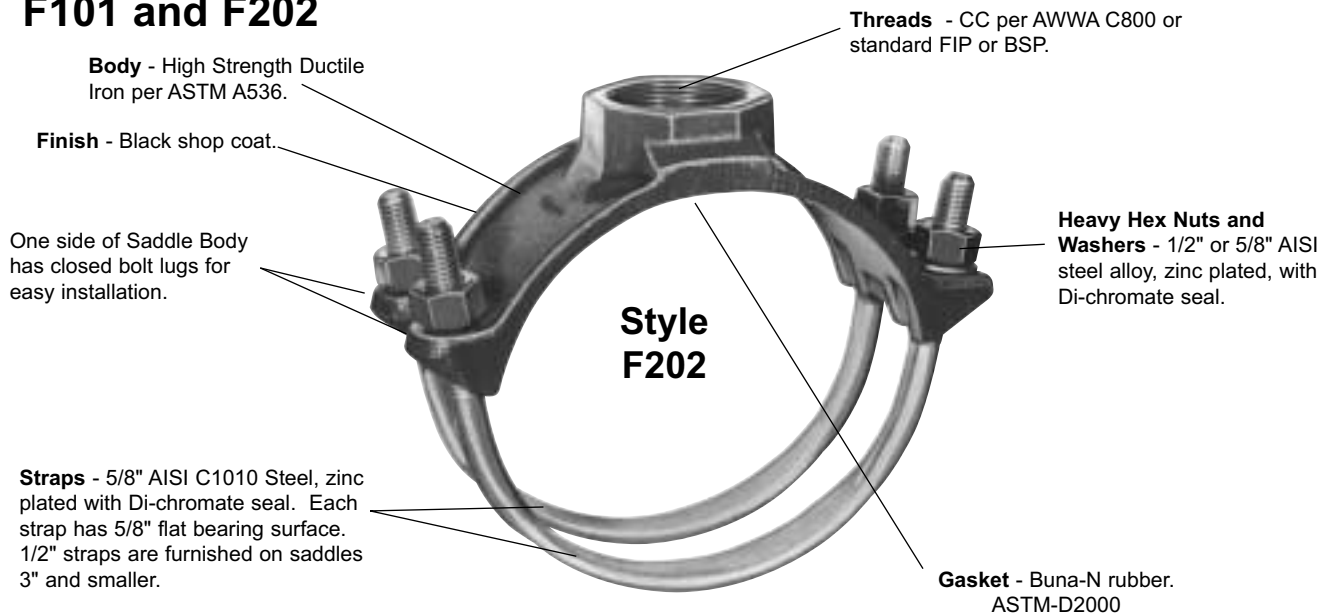
## Ford Iron Service Saddles

Ford Iron Service Saddles have a wide range and are designed for use on asbestos-cement, cast or ductile iron and PVC pipe. They offer a simple yet satisfactory means of tapping water main pipe. The FS and FC Styles are recommended for use in highly corrosive areas and the stainless steel bands are especially recommended for use on PVC. Ford Style FS and FC Saddles should be pre-sized when used on C900 PVC pipe. Pre-sized saddles will conform to the pipe O.D. without placing undue stress on the PVC pipe. The Ford Meter Box Company endorses full compliance with the standard tapping practices and recommended material requirements for tapping PVC pipe outlined in the Uni-Bell Handbook of PVC Pipe and the AWWA Manual M23.

One side of the saddle has closed lugs to allow pre-assembly of the saddle straps to facilitate installation. The heavy duty gasket maintains a positive seal in excess of the pipe rating.

Ford's convenient marking system quickly and easily identifies the type of thread in the boss. For AWWA tapered thread the top edge of the boss has a groove around the outside edge while the boss for iron pipe thread is smooth. Some epoxy coated saddles (FC101 Style) might have an ink stamp only to designate AWWA tapered threads.

### F101 and F202



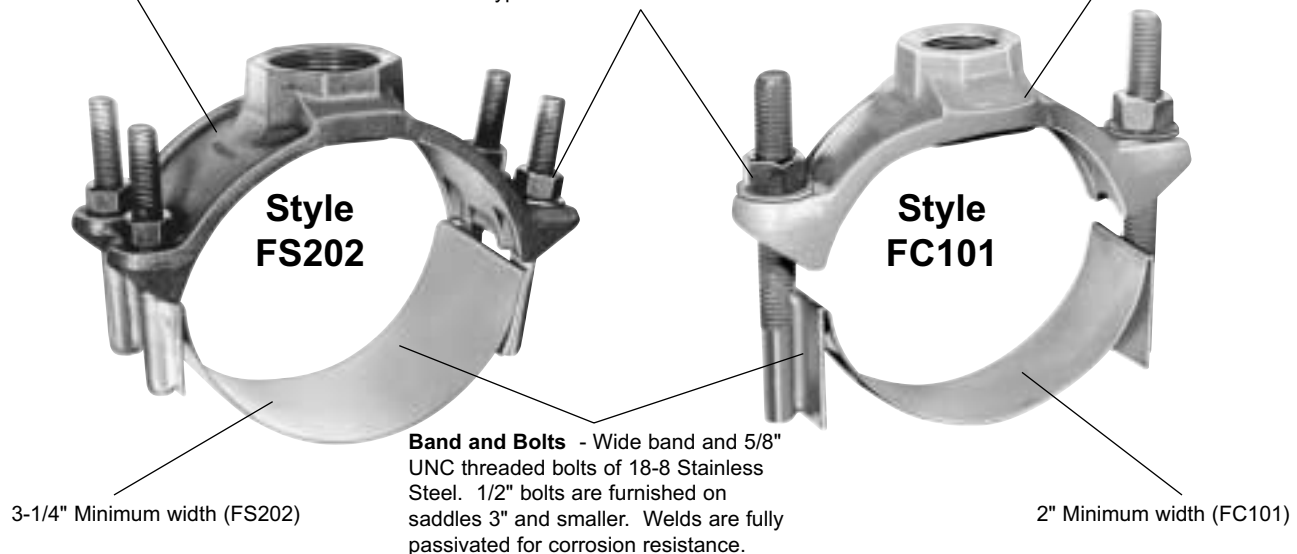
### FS101 and FS202

**Finish** - Black shop coat.

**Nuts and Washers** - 1/2" or 5/8" fluorocarbon coated heavy hex nuts and washers made from 18-8 type 304 Stainless Steel.

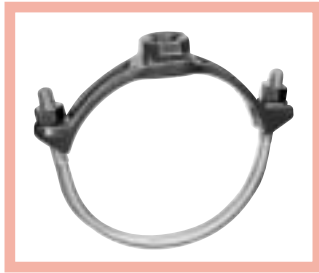
### FC101 and FC202

**Finish** - Approximately 12 mils of fusion applied epoxy coating.

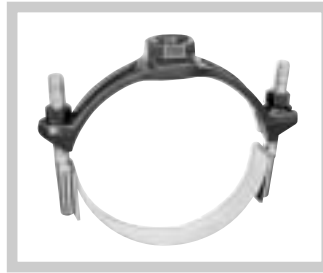


# Ford Iron Service Saddles Styles F101, FS101 & FC101

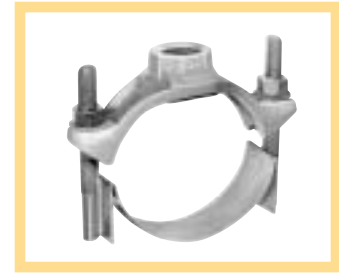
Single Strap for 3/4" and 1" Taps



F101 Standard Strap



FS101 (with Stainless Steel Band and Bolts)



FC101 (Epoxy Coated with Stainless Steel Band and Bolts)

**To Order:** Select the Catalog Number for the desired pipe range and complete Catalog Number by adding the Tap Code Number.  
Example: A standard single strap saddle for 6.90 Ductile Iron Pipe with a 3/4" CC thread would be F101-760-CC3.

| NOM. PIPE SIZE | PIPE O.D. RANGE | CATALOG NUMBER STANDARD STRAP | CATALOG NUMBER STAINLESS BAND | CATALOG NUMBER EPOXY COATED | STD. PKG. QTY. | APPROX. WT. LBS. |
|----------------|-----------------|-------------------------------|-------------------------------|-----------------------------|----------------|------------------|
| 2"             | 2.35-2.50       | F101-250-Tap                  | FS101-250-Tap                 | FC101-250-Tap               | 10             | 1.8              |
| 2-1/2"         | 2.75-2.90       | F101-290-Tap                  | FS101-290-Tap                 | FC101-290-Tap               | 8              | 2.0              |
| 3"             | 3.46-3.80       | F101-380-Tap                  | FS101-380-Tap                 | FC101-380-Tap               | 8              | 2.1              |
|                | 3.80-4.25       | F101-425-Tap                  | FS101-425-Tap                 | FC101-425-Tap               | 6              | 2.4              |
| 4"             | 4.26-4.73       | F101-473-Tap                  | FS101-473-Tap                 | FC101-473-Tap               | 6              | 2.8              |
|                | 4.74-5.26       | F101-526-Tap                  | * FS101-526-Tap               | * FC101-526-Tap             | 12             | 3.0              |
| 6"             | 5.94-6.69       | F101-669-Tap                  | FS101-669-Tap                 | FC101-669-Tap               | 10             | 3.5              |
|                | 6.63-6.90       | F101-690-Tap                  | * FS101-690-Tap               | * FC101-690-Tap             | -              | -                |
|                | 6.84-7.60       | F101-760-Tap                  | FS101-760-Tap                 | FC101-760-Tap               | 6              | 3.6              |
| 8"             | 7.93-8.71       | F101-871-Tap                  | * FS101-871-Tap               | * FC101-871-Tap             | 6              | 3.8              |
|                | 8.99-9.79       | F101-979-Tap                  | FS101-979-Tap                 | FC101-979-Tap               | 6              | 4.3              |
| 10"            | 10.00-10.75     | F101-1075-Tap                 | FS101-1075-Tap                | FC101-1075-Tap              | 8              | 4.4              |
|                | 11.10-12.12     | F101-1212-Tap                 | FS101-1212-Tap                | FC101-1212-Tap              | 8              | 4.8              |
| 12"            | 12.00-12.75     | F101-1275-Tap                 | FS101-1275-Tap                | FC101-1275-Tap              | 8              | 5.9              |
|                | 13.20-14.38     | F101-1438-Tap                 | FS101-1438-Tap                | FC101-1438-Tap              | 8              | 6.7              |

## FS101 and FC101 Saddles Sized for C900 PVC

**To Order:** Select the Catalog Number for the desired pipe O.D. and complete the Catalog Number by adding the Tap Code Number. Example: An FS101 Style Saddle for 12" C900 PVC with a 3/4" CC thread tap would be FS101-1320-CC3

| NOM. PIPE SIZE | PIPE O.D. | CATALOG NUMBER STAINLESS BAND | CATALOG NUMBER EPOXY COATED | STD. PKG. QTY. | APPROX. WT. LBS. |
|----------------|-----------|-------------------------------|-----------------------------|----------------|------------------|
| 4"             | 4.80      | *FS101-480-Tap                | *FC101-480-Tap              | 12             | 3.0              |
| 6"             | 6.90      | *FS101-690-Tap                | *FC101-690-Tap              | 6              | 3.6              |
| 8"             | 9.05      | *FS101-905-Tap                | *FC101-905-Tap              | 6              | 4.3              |
| 10"            | 11.10     | FS101-1110-Tap                | FC101-1110-Tap              | 8              | 4.8              |
| 12"            | 13.20     | FS101-1320-Tap                | FC101-1320-Tap              | 8              | 6.7              |

\* These saddles are available with 1-1/4", 1-1/2", and 2" taps.

## OUTLET THREAD TAP CODE

| CC (AWWA) THREAD |          | FIP THREAD |          | BSP THREAD |          |
|------------------|----------|------------|----------|------------|----------|
| THREAD           | CODE NO. | THREAD     | CODE NO. | THREAD     | CODE NO. |
| 3/4" CC          | CC3      | 3/4" IP    | IP3      | 3/4" BSP   | BSP3     |
| 1" CC            | CC4      | 1" IP      | IP4      | 1" BSP     | BSP4     |
| 1-1/4" CC        | CC5      | 1-1/4" IP  | IP5      | 1-1/4" BSP | BSP5     |
| 1-1/2" CC        | CC6      | 1-1/2" IP  | IP6      | 1-1/2" BSP | BSP6     |
| 2" CC            | CC7      | 2" IP      | IP7      | 2" BSP     | BSP7     |

# Ford Iron Service Saddles

## Styles F202, FS202 & FC202

### Double Strap Saddles for 3/4" through 2-1/2" Taps

Ford Double Strapped or Banded Saddles are recommended for larger taps and for use on larger O.D. pipe. Double strap saddles equalize the pressure on the pipe and can be used on asbestos-cement, cast or ductile iron pipe.

The FS and FC styles are recommended for use in highly corrosive areas and the stainless steel bands are especially recommended for use on PVC pipe. Ford Styles FS and FC Saddles should be pre-sized when used on PVC pipe. Pre-sized saddles will conform to the pipe O.D. without placing undue stress on the PVC pipe. A separate listing of FS202 and FC202 Saddles sized for C900 PVC is shown on page 21. The Ford Meter Box Company endorses full compliance with the standard tapping practices and recommended material requirements for tapping PVC pipe outlined in Uni-Bell Handbook of PVC Pipe and AWWA Manual M23.

The open and closed lug design allows pre-assembly of the straps, thus ensuring a safe yet simple installation. The heavy duty gasket assures the saddle will maintain pressure in excess of the pipe rating.

Ford's convenient marking system quickly and easily identifies the type of thread in the boss. For AWWA tapered thread the top edge of the boss has a groove around the outside edge while the boss for iron pipe thread is smooth. Some epoxy coated saddles (FC202 Style) might have an ink stamp only to designate AWWA tapered threads.



**Standard Straps**



**Stainless Band**



**Stainless Band & Epoxy Coated**

**To Order:** Select the Catalog Number below for the desired pipe O.D. Range and complete the Catalog Number by adding the Outlet Thread Tap Code from the bottom of page 21. Example: A standard Double Strap Saddle for 6.90 Ductile Iron Pipe with a 2" CC thread tap would be F202-760-CC7.

| NOM. PIPE SIZE | PIPE O.D. RANGE | CATALOG NUMBER<br>STANDARD STRAP | CATALOG NUMBER<br>STAINLESS BAND | CATALOG NUMBER<br>EPOXY COATED | PKG. QTY.<br>3/4" & 1" TAPS | PKG. QTY.<br>1-1/4" - 2-1/2" TAPS | APPROX. WT. LBS. |
|----------------|-----------------|----------------------------------|----------------------------------|--------------------------------|-----------------------------|-----------------------------------|------------------|
| 2"             | 2.35-2.50       | F202-250-Tap                     | FS202-250-Tap                    | FC202-250-Tap                  | 8                           | -                                 | 2.8              |
| 2-1/2"         | 2.75-2.90       | F202-290-Tap                     | FS202-290-Tap                    | FC202-290-Tap                  | 8                           | -                                 | 2.8              |
| 3"             | * 3.46-3.80     | F202-380-Tap                     | FS202-380-Tap                    | FC202-380-Tap                  | 6                           | * 6                               | 4.8              |
|                | * 3.80-4.25     | F202-425-Tap                     | FS202-425-Tap                    | FC202-425-Tap                  | 6                           | * 6                               | 5.5              |
| 4"             | * 4.26-4.73     | F202-473-Tap                     | FS202-473-Tap                    | FC202-473-Tap                  | 6                           | * 6                               | 5.4              |
|                | ** 4.50-4.80    | F202-480-Tap                     | FS202-480-Tap                    | FC202-480-Tap                  | 6                           | 6                                 | 5.4              |
| 6"             | 4.74-5.26       | F202-526-Tap                     | FS202-526-Tap                    | FC202-526-Tap                  | 6                           | 6                                 | 5.4              |
|                | 5.94-6.69       | F202-669-Tap                     | FS202-669-Tap                    | FC202-669-Tap                  | 5                           | 4                                 | 5.7              |
|                | 6.63-6.90       | F202-690-Tap                     | FS202-690-Tap                    | FC202-690-Tap                  | 4                           | 4                                 | 5.7              |
|                | 6.84-7.60       | F202-760-Tap                     | FS202-760-Tap                    | FC202-760-Tap                  | 4                           | 4                                 | 6.7              |
| 8"             | 7.93-8.71       | F202-871-Tap                     | FS202-871-Tap                    | FC202-871-Tap                  | 4                           | 4                                 | 6.8              |
|                | ▲ 8.63-9.05     | F202-905-Tap                     | FS202-905-Tap                    | FC202-905-Tap                  | 5                           | 5                                 | 8.2              |
|                | 8.99-9.79       | F202-979-Tap                     | FS202-979-Tap                    | FC202-979-Tap                  | 5                           | 5                                 | 8.4              |
| 10"            | 10.00-10.75     | F202-1075-Tap                    | FS202-1075-Tap                   | FC202-1075-Tap                 | 3                           | 5                                 | 9.4              |
|                | 10.75-11.10     | F202-1110-Tap                    | FS202-1110-Tap                   | FC202-1110-Tap                 | 4                           | 4                                 | 9.0              |
|                | 11.10-12.12     | F202-1212-Tap                    | FS202-1212-Tap                   | FC202-1212-Tap                 | 3                           | 3                                 | 10.8             |
| 12"            | 12.00-12.75     | F202-1275-Tap                    | FS202-1275-Tap                   | FC202-1275-Tap                 | 3                           | 3                                 | 11.0             |
|                | ** 12.75-13.20  | F202-1320-Tap                    | FS202-1320-Tap                   | FC202-1320-Tap                 | 3                           | 3                                 | 11.5             |
| 14"            | 13.20-14.38     | F202-1438-Tap                    | FS202-1438-Tap                   | FC202-1438-Tap                 | 3                           | 3                                 | 12.8             |
|                | 15.30-16.25     | F202-1625-Tap                    | FS202-1625-Tap                   | FC202-1625-Tap                 | 1                           | 1                                 | 11.9             |
|                | 16.30-17.25     | F202-1725-Tap                    | FS202-1725-Tap                   | FC202-1725-Tap                 | 1                           | 1                                 | 12.9             |
| 16"            | 17.40-18.40     | F202-1840-Tap                    | FS202-1840-Tap                   | FC202-1840-Tap                 | 1                           | 2                                 | 13.1             |
|                | 18.50-19.25     | F202-1925-Tap                    | FS202-1925-Tap                   | FC202-1925-Tap                 | 1                           | 1                                 | 12.9             |
| 18"            | 19.50-20.50     | F202-2050-Tap                    | FS202-2050-Tap                   | FC202-2050-Tap                 | 1                           | 1                                 | 13.1             |
| 20"            | 21.20-22.20     | F202-2220-Tap                    | FS202-2220-Tap                   | FC202-2220-Tap                 | 1                           | 1                                 | 13.2             |
|                | 22.50-23.50     | F202-2350-Tap                    | FS202-2350-Tap                   | FC202-2350-Tap                 | 1                           | 1                                 | 13.3             |
| 24"            | 23.80-24.80     | F202-2480-Tap                    | FS202-2480-Tap                   | FC202-2480-Tap                 | 1                           | 1                                 | 13.4             |
|                | 25.60-26.50     | F202-2650-Tap                    | FS202-2650-Tap                   | FC202-2650-Tap                 | 1                           | 1                                 | 13.9             |
| 30"            | 31.74-32.74     | F202-3274-Tap                    | FS202-3274-Tap                   | FC202-3274-Tap                 | 1                           | 1                                 | 14.8             |

\* Saddles for this pipe range are not available with 2" CC or 2-1/2" IP threads.

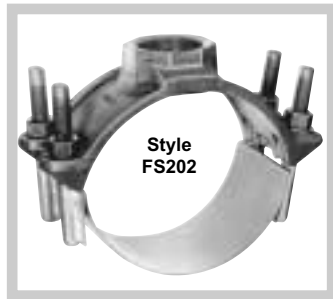
\*\* These saddles with 1-1/4" - 2-1/2" taps fit the top of the listed range only. Example: F202-1320-CC7 fits 13.20 Pipe O.D. only.

▲ This Saddle with 2" CC or 2-1/2" IP fits 9.05" O.D. Pipe only.

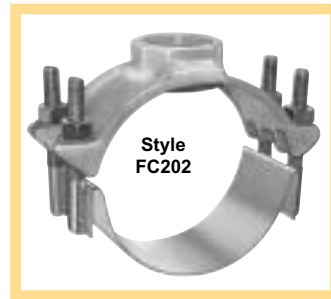
**Note:** The table of Outlet Thread Tap Codes for Double Strap Saddles and for Double Strap Saddles for C900 PVC pipe is at the bottom of the next page.

# Ford Iron Service Saddles Styles FS202 & FC202 For C900 PVC

Double Strap Saddles for 3/4" through 2-1/2" Taps



Stainless Band



Stainless Band  
& Epoxy Coated

## FS202 and FC202 Saddles Sized for C900 PVC

**To Order:** Select the Catalog Number for the desired pipe O.D. and complete the Catalog Number by adding the Outlet Thread Tap Code. Example: An FS202 Style Saddle for 12" C900 PVC with a 2" CC thread would be FS202-1320-CC7.

| NOM.<br>PIPE<br>SIZE | PIPE<br>O.D. | CATALOG<br>NUMBER<br>STAINLESS STEEL | CATALOG<br>NUMBER<br>EPOXY COATED | PKG. QTY<br>3/4" & 1"<br>TAPS | PKG. QTY.<br>1-1/4" - 2-1/2"<br>TAPS | APPROX.<br>WT.<br>LBS. |
|----------------------|--------------|--------------------------------------|-----------------------------------|-------------------------------|--------------------------------------|------------------------|
| 4"                   | 4.80         | FS202-480-Tap                        | FC202-480-Tap                     | 6                             | 6                                    | 5.4                    |
| 6"                   | 6.90         | FS202-690-Tap                        | FC202-690-Tap                     | 5                             | 4                                    | 5.7                    |
| 8"                   | 9.05         | FS202-905-Tap                        | FC202-905-Tap                     | 6                             | 4                                    | 8.2                    |
| 10"                  | 11.10        | FS202-1110-Tap                       | FC202-1110-Tap                    | 3                             | 3                                    | 9.0                    |
| 12"                  | 13.20        | FS202-1320-Tap                       | FC202-1320-Tap                    | 3                             | 3                                    | 11.5                   |
| 14"                  | 15.30        | FS202-1530-Tap                       | FC202-1530-Tap                    | 1                             | 1                                    | 11.9                   |
| 16"                  | 17.40        | FS202-1740-Tap                       | FC202-1740-Tap                    | 1                             | 1                                    | 13.1                   |
| 18"                  | 19.50        | FS202-1950-Tap                       | FC202-1950-Tap                    | 1                             | 1                                    | 13.1                   |
| 20"                  | 21.60        | FS202-2160-Tap                       | FC202-2160-Tap                    | 1                             | 1                                    | 13.2                   |
| 24"                  | 25.80        | FS202-2580-Tap                       | FC202-2580-Tap                    | 1                             | 1                                    | 13.9                   |
| 30"                  | 32.00        | FS202-3200-Tap                       | FC202-3200-Tap                    | 1                             | 1                                    | 14.8                   |

## OUTLET THREAD TAP CODE

| CC (AWWA) THREAD |          | FIP THREAD |          | BSP THREAD |          |
|------------------|----------|------------|----------|------------|----------|
| THREAD           | CODE NO. | THREAD     | CODE NO. | THREAD     | CODE NO. |
| 3/4" CC          | CC3      | 3/4" IP    | IP3      | 3/4" BSP   | BSP3     |
| 1" CC            | CC4      | 1" IP      | IP4      | 1" BSP     | BSP4     |
| 1-1/4" CC        | CC5      | 1-1/4" IP  | IP5      | 1-1/4" BSP | BSP5     |
| 1-1/2" CC        | CC6      | 1-1/2" IP  | IP6      | 1-1/2" BSP | BSP6     |
| 2" CC            | CC7      | 2" IP      | IP7      | 2" BSP     | BSP7     |
| -                | -        | 2-1/2"     | IP8      | -          | -        |

# Fabricated Steel Saddles Styles FS202 & F202

## For 3" and 4" Taps

Fabricated Steel Saddles are specifically designed and manufactured for applications requiring a 3" and 4" iron pipe service tap. These products are available with an 18-8 stainless steel band or with zinc plated C1010 steel straps. Ford Fabricated Steel Saddles have a 150 PSI working pressure rating, dependent upon the use of industry standard support and backfill practices.

Ford recommends special Fabricated FTS Tapping Sleeves for air release or vacuum valve applications above 150 PSI. Contact Ford Meter Box Customer Service for more information.

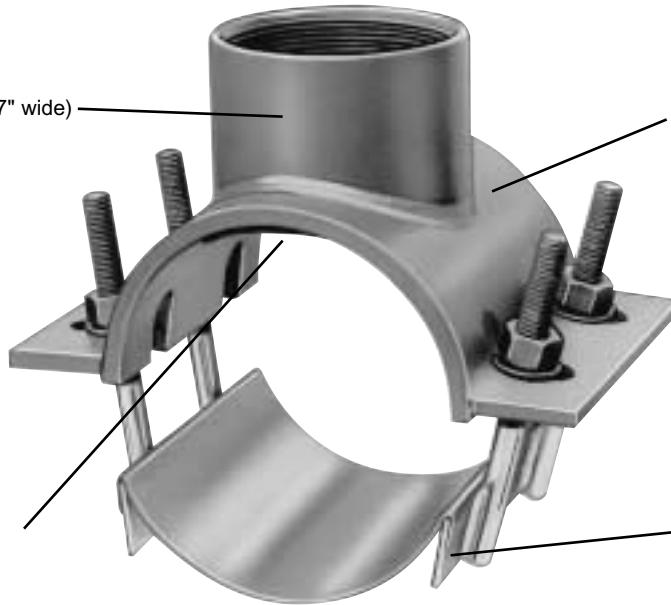
### FS202

**Body** - Fabricated Steel. (7" wide)

**Finish** - Black alkyd enamel shop coat

**Gasket** - Buna-N rubber  
ASTM-D2000.

**Band** - 18-8 type 304  
Stainless Steel.



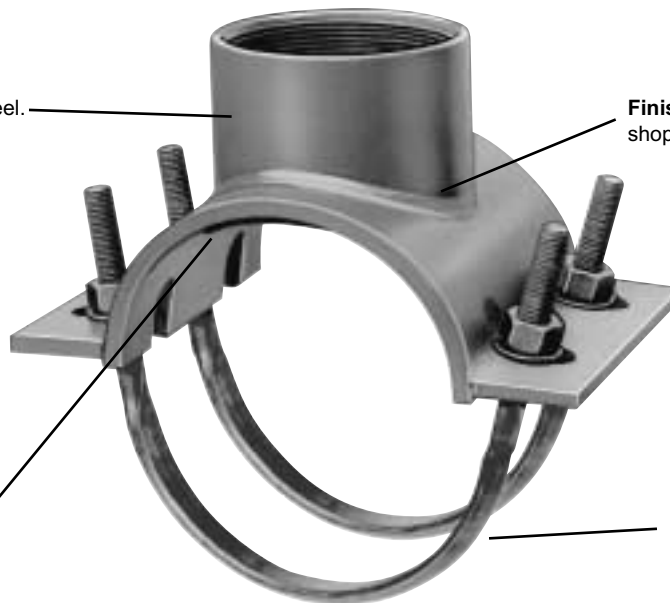
### F202

**Body** - Fabricated Steel.

**Finish** - Black alkyd enamel shop coat

**Gasket** - Buna-N rubber  
ASTM-D2000.

**Straps** - 5/8" AISI C1010  
steel, zinc plated with  
di-chromate seal.



# Fabricated Steel Saddles Styles FS202 & F202

For 3" and 4" Taps

| NOM.<br>PIPE<br>SIZE | ACTUAL<br>PIPE<br>O.D. | TAP<br>SIZE | STAINLESS BAND<br>CATALOG<br>NUMBER | STEEL STRAPS<br>CATALOG<br>NUMBER | CTN.<br>QTY. | APPROX.<br>WT.<br>LBS. |
|----------------------|------------------------|-------------|-------------------------------------|-----------------------------------|--------------|------------------------|
| 6"                   | 6.00                   | 3"          | FS202-600-IP9                       | F202-600-IP9                      | 1            | 15.7                   |
|                      | 6.00                   | 4"          | FS202-600-IP11                      | F202-600-IP11                     | 1            | 16.1                   |
|                      | 6.63                   | 3"          | FS202-663-IP9                       | F202-663-IP9                      | 1            | 16.0                   |
|                      | 6.63                   | 4"          | FS202-663-IP11                      | F202-663-IP11                     | 1            | 16.3                   |
|                      | 6.90                   | 3"          | FS202-690-IP9                       | F202-690-IP9                      | 1            | 16.4                   |
|                      | 6.90                   | 4"          | FS202-690-IP11                      | F202-690-IP11                     | 1            | 16.7                   |
| 8"                   | 8.00                   | 3"          | FS202-800-IP9                       | F202-800-IP9                      | 1            | 16.6                   |
|                      | 8.00                   | 4"          | FS202-800-IP11                      | F202-800-IP11                     | 1            | 17.0                   |
|                      | 8.63                   | 3"          | FS202-863-IP9                       | F202-863-IP9                      | 1            | 16.9                   |
|                      | 8.63                   | 4"          | FS202-863-IP11                      | F202-863-IP11                     | 1            | 17.3                   |
|                      | 9.05                   | 3"          | FS202-905-IP9                       | F202-905-IP9                      | 1            | 17.2                   |
|                      | 9.05                   | 4"          | FS202-905-IP11                      | F202-905-IP11                     | 1            | 17.5                   |
| 10"                  | 10.00                  | 3"          | FS202-1000-IP9                      | F202-1000-IP9                     | 1            | 18.0                   |
|                      | 10.00                  | 4"          | FS202-1000-IP11                     | F202-1000-IP11                    | 1            | 19.1                   |
|                      | 10.75                  | 3"          | FS202-1075-IP9                      | F202-1075-IP9                     | 1            | 18.4                   |
|                      | 10.75                  | 4"          | FS202-1075-IP11                     | F202-1075-IP11                    | 1            | 19.5                   |
|                      | 11.10                  | 3"          | FS202-1110-IP9                      | F202-1110-IP9                     | 1            | 18.8                   |
|                      | 11.10                  | 4"          | FS202-1110-IP11                     | F202-1110-IP11                    | 1            | 19.7                   |
| 12"                  | 12.00                  | 3"          | FS202-1200-IP9                      | F202-1200-IP9                     | 1            | 20.0                   |
|                      | 12.00                  | 4"          | FS202-1200-IP11                     | F202-1200-IP11                    | 1            | 21.0                   |
|                      | 12.75                  | 3"          | FS202-1275-IP9                      | F202-1275-IP9                     | 1            | 20.5                   |
|                      | 12.75                  | 4"          | FS202-1275-IP11                     | F202-1275-IP11                    | 1            | 21.1                   |
|                      | 13.20                  | 3"          | FS202-1320-IP9                      | F202-1320-IP9                     | 1            | 20.8                   |
|                      | 13.20                  | 4"          | FS202-1320-IP11                     | F202-1320-IP11                    | 1            | 22.1                   |
| 14"                  | 14.00                  | 3"          | FS202-1400-IP9                      | N/A                               | 1            | 22.0                   |
|                      | 14.00                  | 4"          | FS202-1400-IP11                     | N/A                               | 1            | 23.0                   |
|                      | 15.30                  | 3"          | FS202-1530-IP9                      | N/A                               | 1            | 22.6                   |
|                      | 15.30                  | 4"          | FS202-1530-IP11                     | N/A                               | 1            | 23.4                   |
| 16"                  | 16.00                  | 3"          | FS202-1600-IP9                      | N/A                               | 1            | 23.5                   |
|                      | 16.00                  | 4"          | FS202-1600-IP11                     | N/A                               | 1            | 23.9                   |
|                      | 17.40                  | 3"          | FS202-1740-IP9                      | N/A                               | 1            | 23.7                   |
|                      | 17.40                  | 4"          | FS202-1740-IP11                     | N/A                               | 1            | 24.6                   |
|                      | 17.80                  | 3"          | FS202-1780-IP9                      | N/A                               | 1            | 23.8                   |
|                      | 17.80                  | 4"          | FS202-1780-IP11                     | N/A                               | 1            | 24.1                   |
| 18"                  | 18.00                  | 3"          | FS202-1800-IP9                      | N/A                               | 1            | 24.0                   |
|                      | 18.00                  | 4"          | FS202-1800-IP11                     | N/A                               | 1            | 24.4                   |
|                      | 19.50                  | 3"          | FS202-1950-IP9                      | N/A                               | 1            | 24.5                   |
|                      | 19.50                  | 4"          | FS202-1950-IP11                     | N/A                               | 1            | 24.9                   |
| 20"                  | 20.00                  | 3"          | FS202-2000-IP9                      | N/A                               | 1            | 24.9                   |
|                      | 20.00                  | 4"          | FS202-2000-IP11                     | N/A                               | 1            | 25.4                   |
|                      | 21.60                  | 3"          | FS202-2160-IP9                      | N/A                               | 1            | 25.0                   |
|                      | 21.60                  | 4"          | FS202-2160-IP11                     | N/A                               | 1            | 25.8                   |
| 24"                  | 24.00                  | 3"          | FS202-2400-IP9                      | N/A                               | 1            | 25.9                   |
|                      | 24.00                  | 4"          | FS202-2400-IP11                     | N/A                               | 1            | 26.3                   |
|                      | 25.80                  | 3"          | FS202-2580-IP9                      | N/A                               | 1            | 27.0                   |
|                      | 25.80                  | 4"          | FS202-2580-IP11                     | N/A                               | 1            | 27.5                   |
| 30"                  | 30.00                  | 3"          | FS202-3000-IP9                      | N/A                               | 1            | 28.3                   |
|                      | 30.00                  | 4"          | FS202-3000-IP11                     | N/A                               | 1            | 28.7                   |
|                      | 32.00                  | 3"          | FS202-3200-IP9                      | N/A                               | 1            | 29.9                   |
|                      | 32.00                  | 4"          | FS202-3200-IP11                     | N/A                               | 1            | 30.4                   |

# Ford Stainless Steel Saddles

## Style FS303 for Standard and/or C900 PVC Pipe

### Stainless Steel Bolts and Nuts

18-8 type 304 Stainless Steel Bolts.  
Heavy hex nuts are fluorocarbon coated to prevent galling.

### Stainless Taps

18-8 type 304 Stainless Steel TIG welded to shell. Available with AWWA, FIP., or BSP threads 3/4" thru 2".

### Washers

Special Nylatron GS\* washers are also provided for added lubrication.

### Gasket

Buna-N ASTM D2000 rubber. Coined Body with recessed O-ring (4", 6", 8", 10" and 12" with 3/4" and 1" taps) or Flush Body with tapered gasket.

### Stainless Band

Heavy gauge 18-8 type 304 Stainless Steel. 4" wide on 2" and 3" sizes. 6" wide on 4" through 12" sizes. All welds are fully passivated to restore stainless steel characteristics.

### Pressure Rating

The Ford FS303 is rated for 150 psi.

### Bolt Chart

| NOM. PIPE<br>SIZE | TAP SIZE       |                     |
|-------------------|----------------|---------------------|
|                   | 3/4" & 1"      | 1-1/4", 1-1/2" & 2" |
| 2" - 3"           | One 1/2" Bolt  | -                   |
| 4"                | Two 1/2" Bolts | Two 1/2" Bolts      |
| 5" - 8"           | Two 5/8" Bolts | Two 5/8" Bolts      |
| 10" - 12"         | Two 5/8" Bolts | Four 5/8" Bolts     |

\*Nylatron GS is a registered trademark of the Polymer Corporation.

**To Order:** Add Tap Code Number to Catalog Number. For example: a saddle for 8" PVC with a 1" CC tap would be FS303-905-CC4.

| NOM.<br>PIPE<br>SIZE | O.D.<br>RANGE | CATALOG<br>NUMBER     | BOLT<br>SIZE | APPROX.<br>WT. LBS. | APPROX.<br>WT. LBS.     |
|----------------------|---------------|-----------------------|--------------|---------------------|-------------------------|
|                      |               |                       |              | 3/4" & 1" TAP       | 1-1/4", 1-1/2" & 2" TAP |
| 2"                   | 2.38          | <b>FS303-238-Tap</b>  | 1/2"         | 1.7                 | -                       |
| 2-1/2"               | 2.88          | <b>FS303-288-Tap</b>  | 1/2"         | 1.7                 | -                       |
| 3"                   | 3.50          | <b>FS303-350-Tap</b>  | 1/2"         | 2.0                 | -                       |
| 4"                   | 4.50-4.80     | <b>FS303-480-Tap</b>  | 1/2"         | 2.4                 | 4.2                     |
| 5"                   | 5.56          | <b>FS303-556-Tap</b>  | 5/8"         | 2.7                 | 4.8                     |
| 6"                   | 6.63-6.90     | <b>FS303-690-Tap</b>  | 5/8"         | 2.9                 | 5.1                     |
| 8"                   | 8.63-9.05     | <b>FS303-905-Tap</b>  | 5/8"         | 3.3                 | 5.6                     |
| 10"                  | 10.75-11.10   | <b>FS303-1110-Tap</b> | 5/8"         | 6.2                 | 8.6                     |
| 12"                  | 12.75-13.20   | <b>FS303-1320-Tap</b> | 5/8"         | 6.8                 | 9.1                     |

### OUTLET THREAD TAP CODE

| CC (AWWA) THREAD |            | FIP THREAD |            | BSP THREAD |             |
|------------------|------------|------------|------------|------------|-------------|
| THREAD           | CODE NO.   | THREAD     | CODE NO.   | THREAD     | CODE NO.    |
| 3/4" CC          | <b>CC3</b> | 3/4" IP    | <b>IP3</b> | 3/4" BSP   | <b>BSP3</b> |
| 1" CC            | <b>CC4</b> | 1" IP      | <b>IP4</b> | 1" BSP     | <b>BSP4</b> |
| 1-1/4" CC        | <b>CC5</b> | 1-1/4" IP  | <b>IP5</b> | 1-1/4" BSP | <b>BSP5</b> |
| 1-1/2" CC        | <b>CC6</b> | 1-1/2" IP  | <b>IP6</b> | 1-1/2" BSP | <b>BSP6</b> |
| 2" CC            | <b>CC7</b> | 2" IP      | <b>IP7</b> | 2" BSP     | <b>BSP7</b> |

# Ford Repair Saddles

## Style FRS202 Double Band

**Body** - 7-1/2" wide, 18-8 Type 304 Stainless Steel for total corrosion control. All welds are fully passivated to restore stainless steel characteristics.

**Taps** - 18-8 Stainless Steel available in 3/4" through 2" FIP, AWWA or BSP threads.

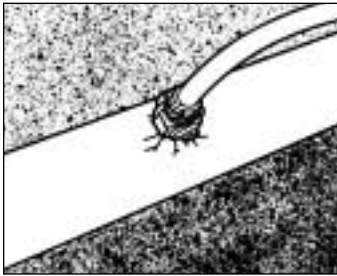
**Bolts and Nuts** - 18-8 Type 304 Stainless Steel 5/8" UNC threads. Heavy hex nuts are fluorocarbon coated to prevent galling. Special Nylatron GS\* washers are also provided for added lubrication.

**Lifter Bar** - 18-8 Stainless Steel provides a heavy bearing surface for nuts.

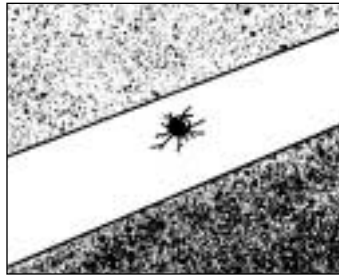
**Gasket** - Tapered Buna-N with circular grid as per ASTM D2000.

**Pressure Rating** - The Ford FRS Stainless Steel Tapping Saddle is rated for 150 PSI.

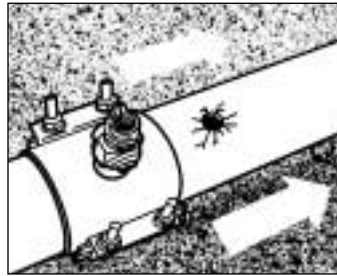
\*Nylatron GS is a registered trademark of the Polymer Corporation.



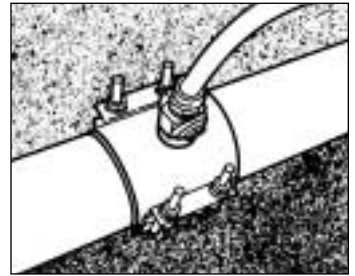
Confirm the leak location by cleaning and examining pipe.



Shut off the water supply and remove the Corporation Stop from the pipe.



Install the Corporation Stop into the Saddle and position loosely on the pipe next to the hole.



Center the Saddle over the damaged pipe hole and tighten the Saddle onto the pipe.

**To Order:** Add tap code number to Catalog Number. For example, a repair saddle for use on 9.05 iron pipe with a 2" CC tap would be FRS202-979-CC7.

| NOM.<br>PIPE<br>SIZE | O.D.<br>RANGE | CATALOG<br>NUMBER      | APPROX.<br>WT.<br>LBS. | BAND     |       |
|----------------------|---------------|------------------------|------------------------|----------|-------|
|                      |               |                        |                        | QUANTITY | WIDTH |
| 4"                   | 4.75-5.35     | <b>FRS202-535-Tap</b>  | 7.5                    | 2        | 2"    |
| 6"                   | 6.85-7.60     | <b>FRS202-760-Tap</b>  | 8.0                    | 2        | 2"    |
| 8"                   | 9.00-9.79     | <b>FRS202-979-Tap</b>  | 8.8                    | 2        | 2"    |
|                      | 11.00-11.80   | <b>FRS202-1180-Tap</b> | 11.0                   | 2        | 2"    |
| 10"                  | 11.50-12.25   | <b>FRS202-1225-Tap</b> | 12.3                   | 2        | 2"    |
|                      | 13.10-13.90   | <b>FRS202-1390-Tap</b> | 13.9                   | 2        | 2"    |
| 12"                  | 13.60-14.40   | <b>FRS202-1440-Tap</b> | 14.5                   | 2        | 2"    |
| 14"                  | 15.20-16.00   | <b>FRS202-1600-Tap</b> | —                      | 2        | 2"    |
| 16"                  | 17.20-18.00   | <b>FRS202-1800-Tap</b> | —                      | 2        | 2"    |
| 18"                  | 19.20-20.00   | <b>FRS202-2000-Tap</b> | —                      | 1        | 7"    |
| 20"                  | 21.40-22.20   | <b>FRS202-2220-Tap</b> | —                      | 1        | 7"    |
| 24"                  | 23.20-24.00   | <b>FRS202-2400-Tap</b> | —                      | 1        | 7"    |
|                      | 25.60-26.40   | <b>FRS202-2640-Tap</b> | —                      | 1        | 7"    |

### OUTLET THREAD TAP CODE

| CC (AWWA) THREAD |            | FIP THREAD |            | BSP THREAD |             |
|------------------|------------|------------|------------|------------|-------------|
| THREAD           | CODE NO.   | THREAD     | CODE NO.   | THREAD     | CODE NO.    |
| 3/4" CC          | <b>CC3</b> | 3/4" IP    | <b>IP3</b> | 3/4" BSP   | <b>BSP3</b> |
| 1" CC            | <b>CC4</b> | 1" IP      | <b>IP4</b> | 1" BSP     | <b>BSP4</b> |
| 1-1/4" CC        | <b>CC5</b> | 1-1/4" IP  | <b>IP5</b> | 1-1/4" BSP | <b>BSP5</b> |
| 1-1/2" CC        | <b>CC6</b> | 1-1/2" IP  | <b>IP6</b> | 1-1/2" BSP | <b>BSP6</b> |
| 2" CC            | <b>CC7</b> | 2" IP      | <b>IP7</b> | 2" BSP     | <b>BSP7</b> |

# O.D. Chart

| PIPE<br>SIZE | PVC<br>(STEEL SIZE) | PVC<br>C900 | CAST IRON         |                       |                         | ASBESTOS-CEMENT |                         |                                   | STEEL |       |
|--------------|---------------------|-------------|-------------------|-----------------------|-------------------------|-----------------|-------------------------|-----------------------------------|-------|-------|
|              | O.D.                | O.D.        | CLASSES           |                       | O.D.                    | CLASS           | MACHINED<br>END<br>O.D. | ROUGH BARREL<br>O.D.<br>MIN - MAX | TYPE  | O.D.  |
|              |                     |             | PIT               | SPUN                  |                         |                 |                         |                                   |       |       |
| 1/2"         | .84                 |             |                   |                       |                         |                 |                         |                                   | STD.  | .84   |
| 3/4"         | 1.05                |             |                   |                       |                         |                 |                         |                                   | STD.  | 1.05  |
| 1"           | 1.32                |             |                   |                       |                         |                 |                         |                                   | STD.  | 1.32  |
| 1 1/4"       | 1.66                |             |                   |                       |                         |                 |                         |                                   | STD.  | 1.66  |
| 1 1/2"       | 1.90                |             |                   |                       |                         |                 |                         |                                   | STD.  | 1.90  |
| 2"           | 2.38                | 2.50        |                   |                       | 2.50                    |                 |                         |                                   | STD.  | 2.38  |
| 2 1/2"       | 2.88                |             |                   |                       |                         |                 |                         |                                   | STD.  | 2.88  |
| 3"           | 3.50                |             | A<br>B,C,D        | 50 - 350              | 3.80<br>3.96            | 100             | 3.74                    | 4.00                              | O.D.  | 3.00  |
|              |                     |             |                   |                       |                         | 150             | 3.84                    | 4.10                              | STD.  | 3.50  |
|              |                     |             |                   |                       |                         | 200             | 3.84                    | 4.29                              |       |       |
| 3 1/2"       |                     |             |                   |                       |                         |                 |                         |                                   | STD.  | 4.00  |
| 4"           | 4.50                | 4.80        | A<br>B,C,D        | 50 - 350              | 4.80<br>5.00            | 100             | 4.64                    | 4.79 - 5.14                       | O.D.  | 4.00  |
|              |                     |             |                   |                       |                         | 150             | 4.81                    | 4.97 - 5.27                       | STD.  | 4.50  |
|              |                     |             |                   |                       |                         | 200             | 4.81                    | 5.22 - 5.57                       |       |       |
| 4 1/2"       |                     |             |                   |                       |                         |                 |                         |                                   | STD.  | 5.00  |
| 5"           |                     |             |                   |                       |                         |                 |                         |                                   | STD.  | 5.56  |
| 6"           | 6.63                | 6.90        | A<br>B,C,D<br>E,F | 50 - 350              | 6.90<br>7.10<br>7.22    | 100             | 6.91                    | 7.05 - 7.40                       | O.D.  | 6.00  |
|              |                     |             |                   |                       |                         | 150             | 6.91                    | 7.07 - 7.37                       | STD.  | 6.63  |
|              |                     |             |                   |                       |                         | 200             | 6.91                    | 7.26 - 7.56                       |       |       |
| 7"           |                     |             |                   |                       |                         |                 |                         |                                   | STD.  | 7.63  |
| 8"           | 8.63                | 9.05        | A,B<br>C,D<br>E,F | 50 - 300<br>350       | 9.05<br>9.30<br>9.42    | 100             | 9.11                    | 9.22 - 9.57                       | O.D.  | 8.00  |
|              |                     |             |                   |                       |                         | 150             | 9.11                    | 9.27 - 9.57                       | STD.  | 8.63  |
|              |                     |             |                   |                       |                         | 200             | 9.11                    | 9.39 - 9.74                       |       |       |
| 9"           |                     |             |                   |                       |                         |                 |                         |                                   | STD.  | 9.63  |
| 10"          | 10.75               | 11.10       | A,B<br>C,D<br>E,F | 50 - 200<br>250 - 350 | 11.10<br>11.40<br>11.60 | 100             | 11.24                   | 11.42 - 11.77                     | O.D.  | 10.00 |
|              |                     |             |                   |                       |                         | 150             | 11.66                   | 11.82 - 12.12                     | STD.  | 10.75 |
|              |                     |             |                   |                       |                         | 200             | 11.66                   | 11.77 - 12.12                     |       |       |
| 12"          | 12.75               | 13.20       | A,B<br>C,D<br>E,F | 50 - 200<br>250 - 350 | 13.20<br>13.50<br>13.76 | 100             | 13.44                   | 13.69 - 14.04                     | O.D.  | 12.00 |
|              |                     |             |                   |                       |                         | 150             | 13.92                   | 14.08 - 14.38                     | STD.  | 12.75 |
|              |                     |             |                   |                       |                         | 200             | 13.92                   | 14.03 - 14.38                     |       |       |
| 14"          |                     |             | A,B<br>C,D<br>E,F | 50 - 100<br>150 - 300 | 15.30<br>15.65<br>15.98 | 100             | 15.07                   | 15.40 - 15.80                     | O.D.  | 14.00 |
|              |                     |             |                   |                       |                         | 150             | 16.22                   | 16.38 - 16.73                     |       |       |
|              |                     |             |                   |                       |                         | 200             | 16.22                   | 16.48 - 16.88                     |       |       |
| 16"          |                     |             | A,B<br>C,D<br>E,F | 50 - 100<br>150 - 300 | 17.40<br>17.80<br>18.16 | 100             | 17.14                   | 17.54 - 17.94                     | O.D.  | 16.00 |
|              |                     |             |                   |                       |                         | 150             | 18.46                   | 18.62 - 18.97                     |       |       |
|              |                     |             |                   |                       |                         | 200             | 18.46                   | 18.79 - 19.19                     |       |       |
| 18"          |                     |             | A,B<br>C,D        | 50 - 100<br>150 - 250 | 19.50<br>19.92          | 100             | 19.90                   | 20.44                             | STD.  | 18.00 |
|              |                     |             |                   |                       |                         | 150             | 20.94                   | 21.20                             |       |       |
| 20"          |                     |             | A,B<br>C,D        | 50 - 100<br>150 - 250 | 21.60<br>22.06          | 100             | 22.12                   | 22.50                             | STD.  | 20.00 |
|              |                     |             |                   |                       |                         | 150             | 23.28                   | 23.54                             |       |       |
| 22"          |                     |             |                   |                       |                         |                 |                         |                                   | STD.  | 22.00 |
| 24"          |                     |             | A,B<br>C,D        | 50 - 100<br>150 - 250 | 25.80<br>26.32          | 100             | 26.48                   | 27.17                             | STD.  | 24.00 |
|              |                     |             |                   |                       |                         | 150             | 27.96                   | 28.22                             |       |       |

**Note:** Due to variations in outside diameters and specifications, dimensions listed above are approximate. For this reason, determine the exact pipe O.D. before ordering Ford Pipe Repair Products, Tapping Sleeves and Saddles.

# Section AA

## Ford Service Saddles and Tapping Sleeves

### Warranty

All merchandise is warranted to be free from defects in material and factory workmanship. We will provide, free of charge, new products in equal quantities for any that prove defective within one year from date of shipment from our factory. Manufacturer shall not be liable for any loss, damage, or injury, direct or consequential, arising out of the use of or the inability to use the product. Before using, user shall determine the suitability of the product for his intended use and user assumes all risk and liability whatever in connection therewith. No claims for labor or consequential damage will be allowed. The foregoing may not be changed except by agreement signed by an officer of the manufacturer.

#### **Please Note:**

The Ford Meter Box Company considers the information in this catalog to be correct at the time of publication. Items and option availability, including specifications, are subject to change without notice. Please verify that your product information is current.

The Ford Meter Box Company, Inc. manufacturing facilities are at the following locations:

1. The Ford Meter Box Company, Inc. - Main Office  
775 Manchester Avenue, P.O. Box 443  
Wabash, Indiana 46992-0443
2. The Ford Meter Box Company, Inc. - Pipe Products Division  
815 Miles Parkway  
Pell City, Alabama 35125  
Phone: 205-884-4480 FAX: 205-884-4484



**The Ford Meter Box Co., Inc.** 775 Manchester Avenue, P.O. Box 443, Wabash, Indiana, USA 46992-0443  
Telephone: 219/563-3171 FAX: 1-800-826-3487 Overseas FAX: 219/563-0167 <http://www.fordmeterbox.com>