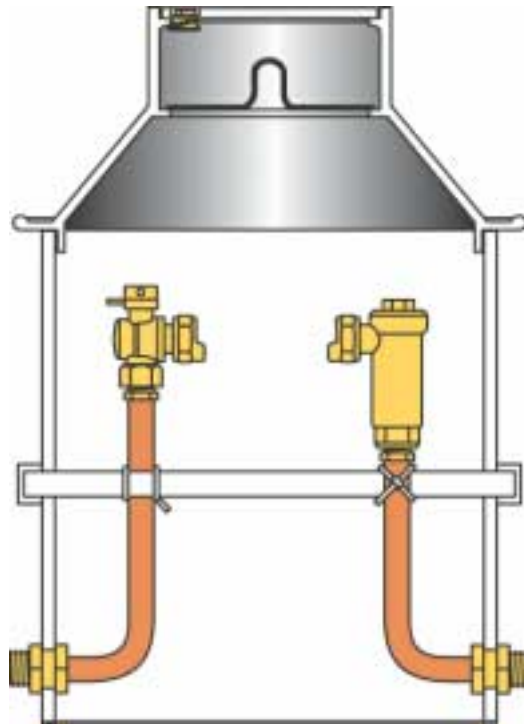


Section FA

6/2002

Ford Plastic Pit Setter

For Single, Tandem
and Dual Settings



The Ford Meter Box Co., Inc. 775 Manchester Avenue, P.O. Box 443, Wabash, Indiana, USA 46992-0443
Telephone: 260/563-3171 FAX: 1-800-826-3487 Overseas FAX: 260/563-0167 <http://www.fordmeterbox.com>

Contents

	Page
Introduction	2
Principles of Meter Pit Design	3
5/8", 5/8" x 3/4", 3/4" and 1" Plastic Pit Setter for Moderate to Cold Climates	
Single Lid Type (Vertical Measurements)	4
Double Lid Type (Vertical Measurements)	5
How to Order a Plastic Pit Setter	6, 7
1-1/2" and 2" Plastic Pit Setters	8
Monitor Lid Pit Setters (Vertical Measurements) ..	8
Single Lid Pit Setters (Vertical Measurements)	9
Double Lid Pit Setters (Vertical Measurements) ...	9
How to Order a 1-1/2" or 2" Pit Setter	10, 11
How to Order a Cover	12, 13
Style "K" Pit Setter for Mild Climates (5/8" x 3/4" Meter)	
The Standard 15" Diameter Style "K"	14
The 15" Diameter Style "K" for Dual Meter Setting	15
Warranty	16

Introduction

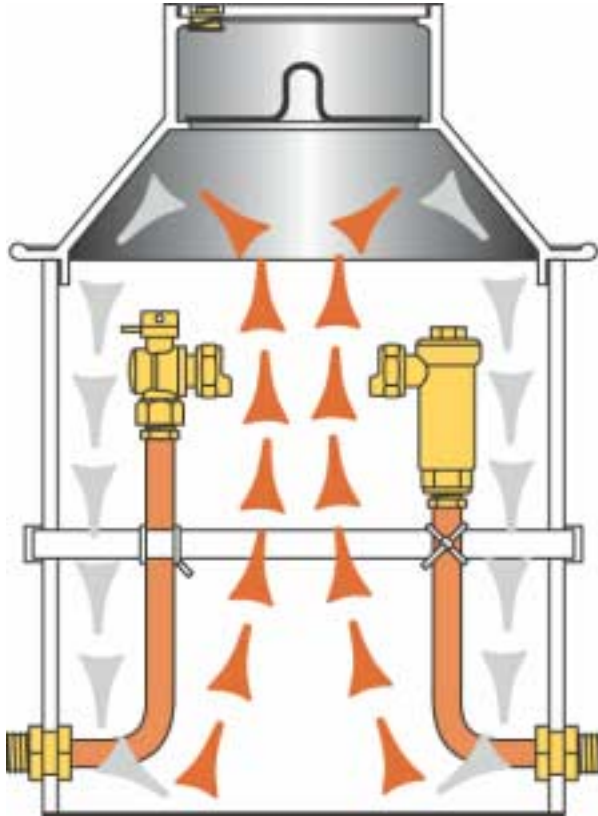
The setting of meters outdoors in covered pits is an idea that dates back to the late 19th century when Edwin Ford, founder of The Ford Meter Box Company, Inc., first utilized this principle to meter the town of Hartford City, Indiana. Mr. Ford's idea has been modified extensively over the intervening years, but the pit setting remains one of the most popular ways of installing meters.

Outdoor meter pit settings offer the utility a number of advantages, including easy access to the meter, protection and control of the meter setting device and a clear cut division of responsibility for maintaining the utility and the customer service line. However, cost considerations have led many utilities to install pit settings that have been less than satisfactory and which become maintenance and freeze-up problems.

The Ford Plastic Pit Setter offers a real cost-saving alternative to the standard "build-your-own" pit setting. Constructed of high-quality 15", 18" or 20" PVC pipe, the Plastic Pit Setter has the service lines attached firmly to the pit walls, with all the valves and meter coupling materials necessary to install the meter as part of the total package. It's a meter pit setting that you can install by simply digging an appropriately sized hole, connecting your inlet and outlet piping to the connections at the bottom of the box and, by placing a cover on top, complete the job of installing a meter setting.

In the pages that follow, we will describe the principles of a good meter setting device and offer engineering drawings of standard plastic pit type settings. Bear in mind, however, that our production methods allow us to custom build plastic pit settings for practically any conceivable requirement; we are not limited to the styles and sizes shown in this catalog section.

Principles of Meter Pit Design



One of the most important jobs of a meter pit setting in northern climates is to prevent meter and service line freeze-ups during the winter months. Several factors affect freezing in meter pits. These are air temperature, snow cover, the type of soil, the temperature of the service water, and the frequency of customer water consumption. The theory of pit design is that the depth of the service shall be below that of the lowest frost line and the heat from the base of the meter pit shall circulate and keep the meter setting above it from freezing. If the base of the meter pit is above the frost line, the only thing that would keep the meter from freezing is the continuous use of the service during the winter months.

Not only should meter pits be deep, but they also should be sufficiently wide. Larger diameter pits may allow a greater loss of heat through the pit walls, but that is more than compensated for by the increased amount of warm air generated by warm soil exposed at the base of the pit. Furthermore, the large diameter provides greater clearance between the cold pit walls and the riser pipes. If these pipes are allowed to touch the walls, the pipes will freeze, the flow of water will be stopped and meter damage will be the likely result. In the Ford Plastic Pit Setter, the service lines are kept a minimum of 2" from the pit wall, thus providing this important protection.

The top of the pit is equally important. In colder climates, a double lid cover such as our Wabash Cover is desirable, as it provides a dead air space between the top lid and the interior of the pit. This "dead air" acts as an insulator, retaining pit heat and keeping outside cold from entering. The Ford Plastic Pit Setter offers the Wabash Cover as an option, also available are single lid iron covers or single lid plastic covers for climates that are less severe. Most Ford covers are "hat shaped" (wider at the base than at the top) which exposes as little surface area as possible to the cold outside air. Flat cast iron covers, for mild climates, are also available. See Ford Catalog Section D.

In summary, the basic points of meter pit design provided by Ford Plastic Pit Setters are as follows: (1) Keep the meter pit depth below the deepest frost penetration line; (2) Keep the meter pit diameter sufficiently large to provide a good base of warm soil as well as to prevent riser pipe freezing due to "frost jump" from the pit walls; (3) Use a hat shaped meter pit cover, with an inner lid where necessary.

These pit setting principles have been proven in over a half century of outdoor pit design. The Ford Plastic Pit Setter is designed around these conservative principles in order that you, the utility customer, will not be faced with the expense of frozen services and unhappy customers. Remember—don't cut corners with pit settings that are too shallow or too small in diameter.

Plastic Pit Setter Design for Single Lid Type (Cover with a 4" depth)



(Pit Diameter is 18" or 20")

PIT DEPTH	SERVICE LINE DEPTH "A"	PVC CYLINDER LENGTH "B"	TOTAL PIT DEPTH "C"
3 Ft. Pit	36"	34"	38"
4 Ft. Pit	48"	46"	50"
5 Ft. Pit	60"	58"	62"
6 Ft. Pit	72"	70"	74"

Diagram illustrating the installation of the Ford BA13-232W Angle Ball Valve and Ford HHCA31-323 Angle Cartridge Dual Check Valve assembly. The assembly is shown within a 18" or 20" PVC Cylinder. Key dimensions and components are labeled:

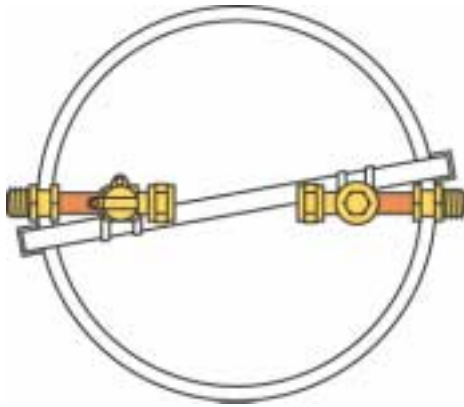
- Dimensions:**
 - 4" (Height from top flange to the top of the valve assembly)
 - 10" (Height from the top of the valve assembly to the top of the cylinder)
 - 2" (Height from the bottom of the cylinder to the bottom of the valve assembly)
 - A, B, C (Vertical dimensions for the valve assembly height)
- Components:**
 - Ford BA13-232W Angle Ball Valve
 - Ford HHCA31-323 Angle Cartridge Dual Check Valve (U.S. PAT. NO. 5148828)
 - Copper Tube Risers
 - Inlet

The drawing above shows a Plastic Pit Setter with optional Inlet Angle Ball Valve and Outlet Angle Cartridge Dual Check Valve.

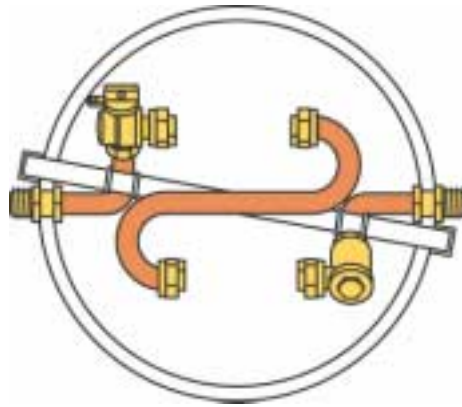
Plastic Pit Setter for Cold Climates

For 5/8", 5/8" x 3/4", 3/4" and 1" Meters

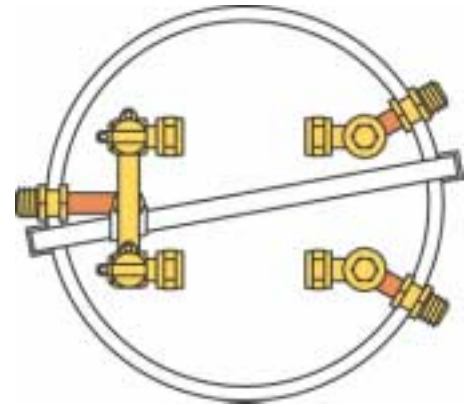
Plastic Pit Setter Design for Double Lid Type (Cover with a 10" depth)



Single Meter Setting



Tandem Setting

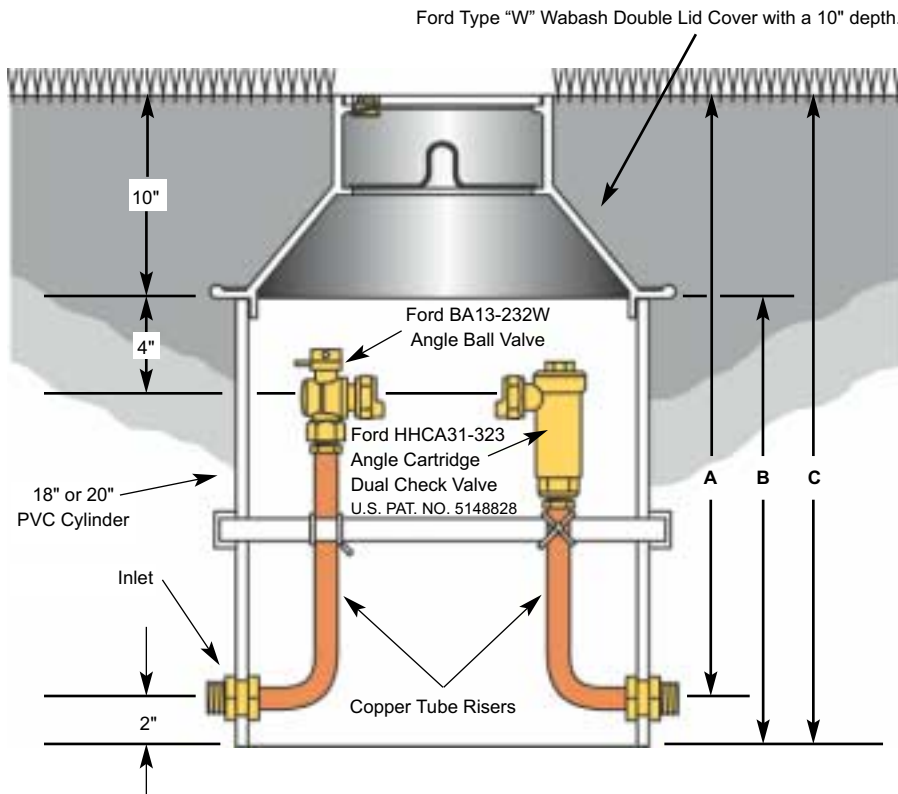


Dual Setting

Vertical Measurements

(Pit Diameter is 18" or 20")

PIT DEPTH	SERVICE LINE DEPTH "A"	PVC CYLINDER LENGTH "B"	TOTAL PIT DEPTH "C"
3 Ft. Pit	36"	28"	38"
4 Ft. Pit	48"	40"	50"
5 Ft. Pit	60"	52"	62"
6 Ft. Pit	72"	64"	74"



The drawing above shows a Plastic Pit Setter with optional Inlet Angle Ball Valve and Outlet Angle Cartridge Dual Check Valve.

Plastic Pit Setter for Moderate to Cold Climates

For 5/8", 5/8" x 3/4", 3/4" and 1" Meters

How To Order A Plastic Pit Setter

To order a Plastic Pit Setter refer to the drawing on the opposite page and answer each of the following questions to create a Catalog Number for the **Plastic Pit Setter** that meets your setting requirements.

Example: PSBH-222-18-72 = a standard single lid style Plastic Pit Setter with an angle ball valve inlet, outlet angle check valve, for a 5/8" x 3/4" meter, inlet and outlet connections for flared copper, 18" x 72" pit diameter and depth.

NOTE: To maintain the frost protection principles of meter pit design select a 20" pit diameter for 3/4" and 1" single meter settings and for 5/8" x 3/4" tandem meter settings.

NOTE: **Covers** for Plastic Pit Setters *are listed and sold separately in Catalog Section D*. A modest selection of covers is shown on pages 12 and 13 of this catalog section.

① What type of pit setting is required? _____

+

TYPE OF SETTING	CODE
Standard for Single Lid Cover	PS
Standard for Double Lid Cover	PD
** Tandem for Single Lid Cover	PTS
** Tandem for Double Lid Cover	PTD
*** Dual Service Line for Single Lid Cover	PDS
*** Dual Service Line for Double Lid Cover	PDD

② What type of inlet valve is required? _____

+

INLET VALVE TYPE	CODE
Angle Key Valve	V
Angle Ball Valve	B
Angle Compression Valve	G
No Inlet Valve	-

③ What type of outlet valve is required? _____

+ (Insert Dash)

OUTLET VALVE TYPE	CODE
Angle Key Valve	V
Angle Compression Valve	G
Angle Check Valve	H
Angle Dual Check Valve	HH
Angle Cartridge Dual Ck Valve	HC
No Outlet Valve	-

④ What meter size is required? _____

+

METER SIZE	CODE
5/8" Meter	1
5/8 x 3/4" Meter	2
3/4" Meter	3
1" Meter	4

⑤ What type of inlet connection is required? _____
(see note below)

+

TYPE OF INLET	CODE
Flared Copper	2
PET/CTS Pack Joint*	4
Male Iron Pipe	8

⑥ What type of outlet connection is required? _____
(see note below)

+ (Insert Dash)

TYPE OF OUTLET	CODE
Flared Copper	2
PET/CTS Pack Joint*	4
Male Iron Pipe	8

⑦ What pit diameter and depth is required? _____

Depth is measured from ground level to service line.

The service line is 2" higher than bottom of pit setter.

PIT DIAMETER AND DEPTH	CODE
18" x 36"	18-36
18" x 48"	18-48
18" x 60"	18-60
18" x 72"	18-72
20" x 36"	20-36
20" x 48"	20-48
20" x 60"	20-60
20" x 72"	20-72

NOTE: Inlet and outlet connections are 3/4" in size, for 5/8", 5/8" x 3/4" and 3/4" meter settings, and 1" for 1" meter settings, unless otherwise specified.

A variety of inlet and outlet couplings for Copper, PEP, PVC, and Lead are available. See Catalog Section J.

Engineering Drawings are available for standard and/or custom pit setter designs.

***Grip Joint** - for CTS is available. Add "-G" to the Catalog Number.

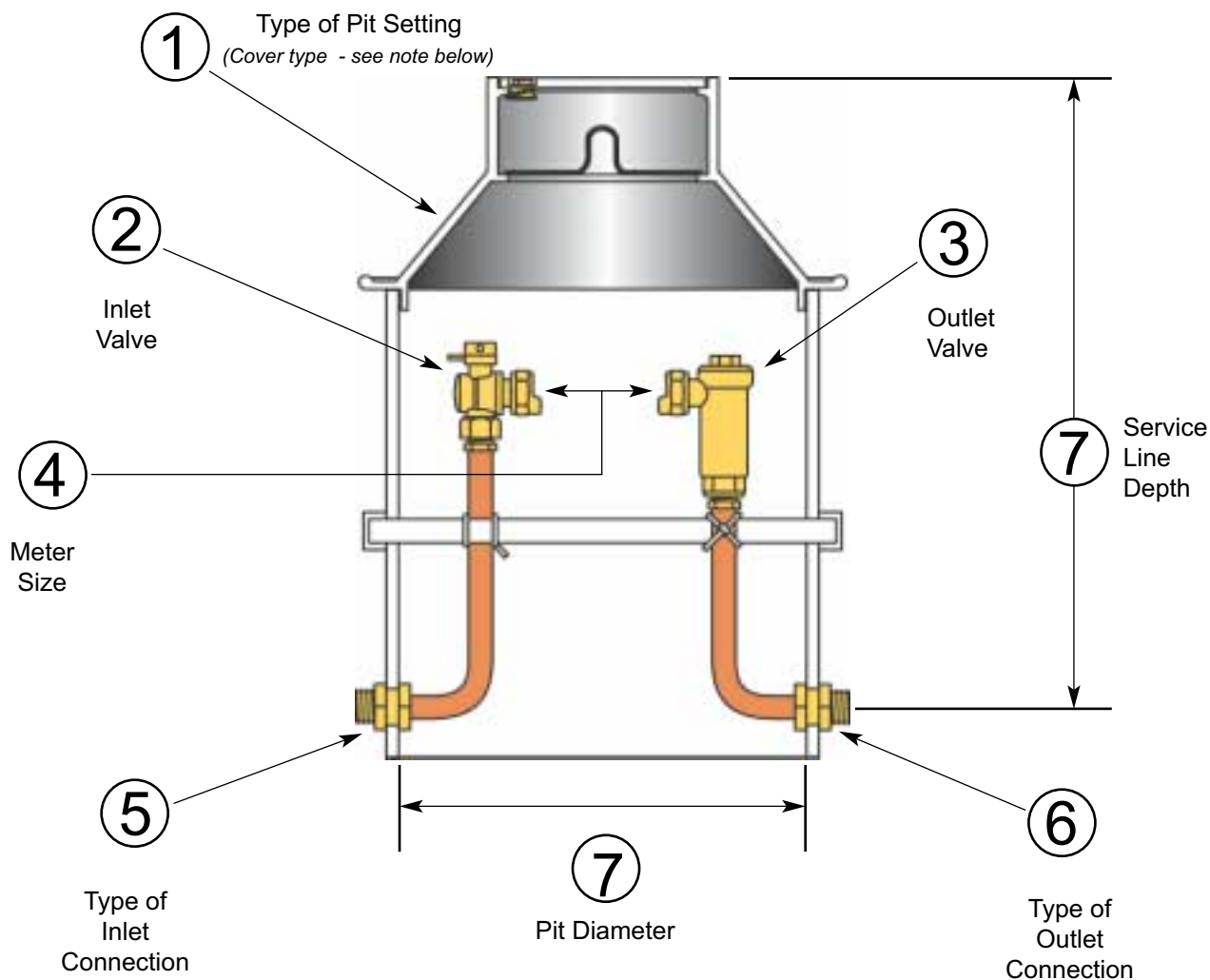
**Not available for 1" meter. Ford recommends a 20" pit diameter with 5/8" and 5/8" x 3/4" tandem and dual meter settings.

***Not available for 3/4" or 1" meters.

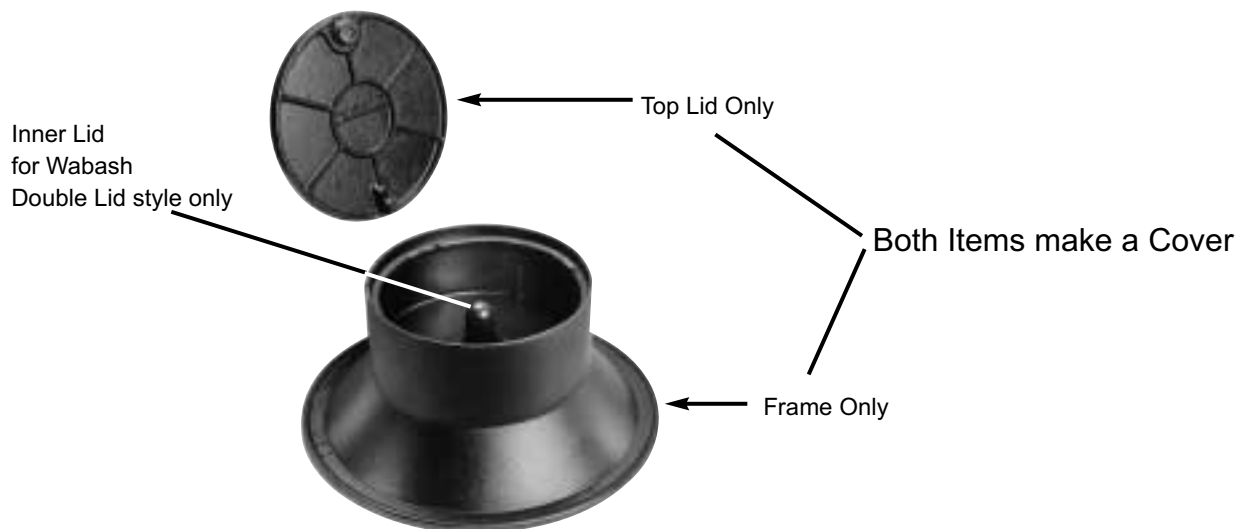
Plastic Pit Setter for Moderate to Cold Climates

For 5/8", 5/8" x 3/4", 3/4" and 1" Meters

How To Order A Plastic Pit Setter



NOTE: A wide variety of 18" and 20" covers can be purchased for Plastic Pit Setters. A complete selection of covers with their specifications and available options are listed in Ford Catalog Section D and must be ordered separately. An abbreviated selection of covers is shown on pages 12 and 13 of this catalog section.



Plastic Pit Setters for 1½" and 2" Meters

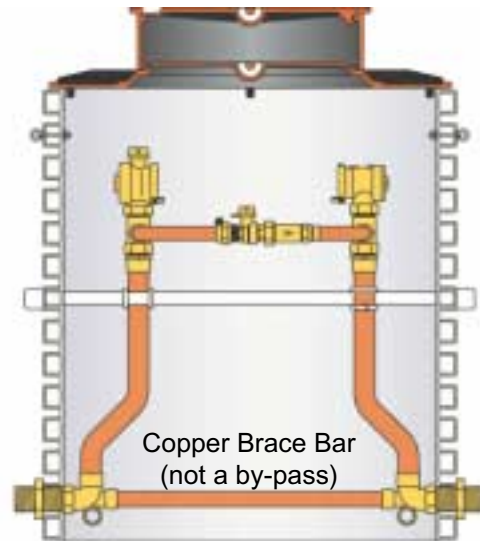
For Flanged Meter Settings

The Ford Plastic Pit Setter is extremely popular with water companies across the nation due to its light weight, durable construction, and ease of installation. The new Plastic Pit Setter for 1½" and 2" water meters extends this design to large meters. You can now set larger meters with the same ease and assurance as smaller meters and receive the same benefits offered by our original Pit Setters.

The Ford Plastic Pit Setter for 1½" and 2" meters features a pit constructed from heavy duty corrugated plastic for lighter weight and extra strength. Like our regular sized Pit Setters, the 1½" and 2" sizes offer a full range of inlet and outlet couplings for a variety of service line materials. A variety of inlet and outlet valves are also available. The risers are anchored to a sturdy PVC brace pipe to prevent shifting inside the setting. A copper brace bar (not a by-pass) spans the lower structure, supporting the entire Pit Setter and riser assembly, providing superb structural integrity.

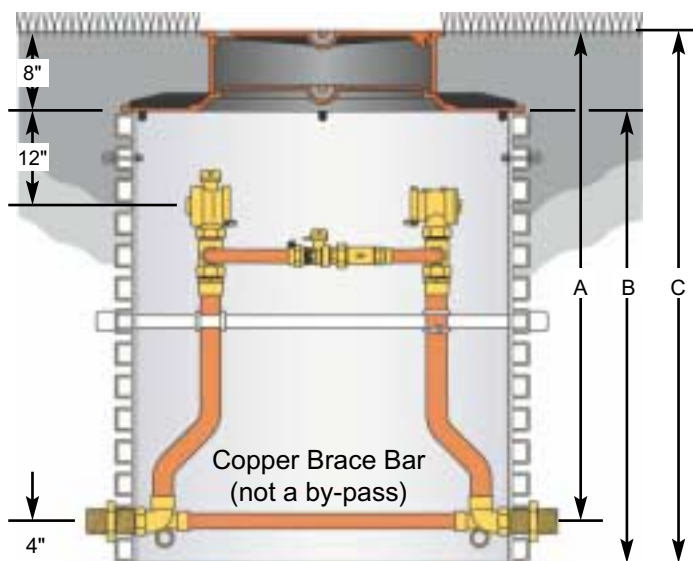
The pit has an open bottom to allow warm air from below the frost line to circulate within the pit setting, preventing freeze-ups. The pit is designed with adequate distance between the side wall and riser to prevent frost jump. See "Principles of Meter Pit Design" on page 3.

Ford Meter Box offers a special lid with precast holes for a remote electronic meter reading module. This lid is specially configured for this purpose, and it is manufactured so that the electronic meter reading module will seat against a flat surface. See *Catalog Section D* for details.



Shown with optional Dual Check Valve in By-Pass, optional Inlet Angle Ball Valve, and optional Outlet Angle Dual Check Valve.

Monitor Lid Pit Setter - Monitor Cover Shown



Shown with optional Dual Check Valve in By-Pass, optional Inlet Angle Ball Valve, and optional Outlet Angle Dual Check Valve.

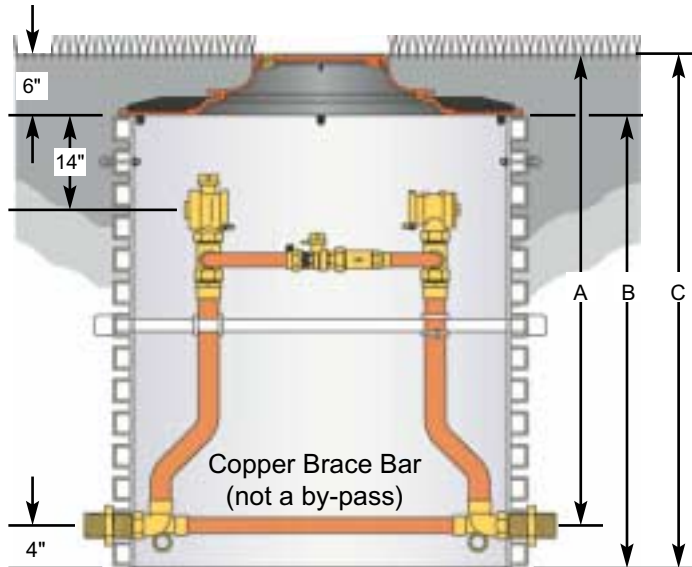
Approximate Vertical Measurements (Pit Diameter is 36")

SERVICE LINE DEPTH "A"	PVC CYLINDER LENGTH "B"	TOTAL PIT DEPTH "C"
36"	32"	40"
42"	38"	46"
48"	44"	52"
54"	50"	58"
60"	56"	64"
66"	62"	70"
72"	68"	76"
78"	74"	82"

Plastic Pit Setters for 1½" and 2" Meters

For Flanged Meter Settings

Single Lid Pit Setter - Type C Cover and Extension Ring (EXT-5) Shown



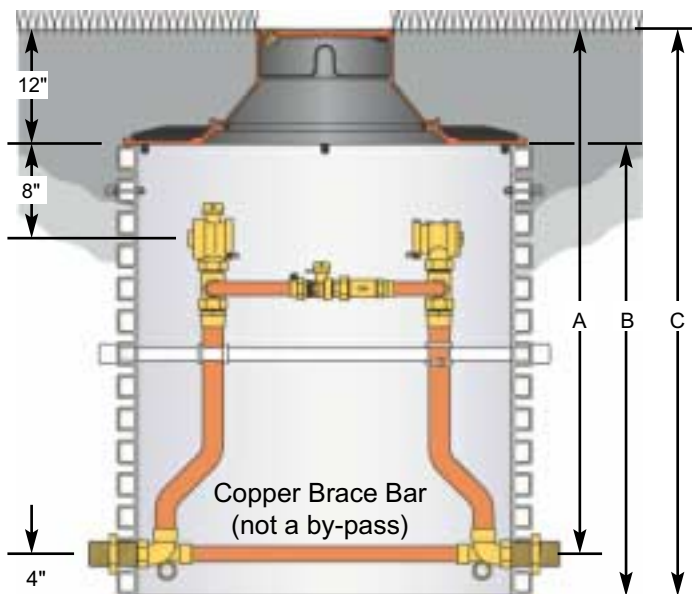
Shown with optional Dual Check Valve in By-Pass, optional Inlet Angle Ball Valve, and optional Outlet Angle Dual Check Valve.

Approximate Vertical Measurements

(Pit Diameter is 36")

SERVICE LINE DEPTH "A"	PVC CYLINDER LENGTH "B"	TOTAL PIT DEPTH "C"
36"	34"	40"
42"	40"	46"
48"	46"	52"
54"	52"	58"
60"	58"	64"
66"	64"	70"
72"	70"	76"
78"	76"	82"

Double Lid Pit Setter - Wabash Cover and Extension Ring (EXT-5) Shown



Shown with optional Dual Check Valve in By-Pass, optional Inlet Angle Ball Valve, and optional Outlet Angle Dual Check Valve.

Approximate Vertical Measurements

(Pit Diameter is 36")

SERVICE LINE DEPTH "A"	PVC CYLINDER LENGTH "B"	TOTAL PIT DEPTH "C"
36"	28"	40"
42"	34"	46"
48"	40"	52"
54"	46"	58"
60"	52"	64"
66"	58"	70"
72"	64"	76"
78"	70"	82"

Plastic Pit Setters for 1½" and 2" Meters

For Flanged Meter Settings

To order a Plastic Pit Setter refer to the drawing on the opposite page and answer each of the following questions to create a Catalog Number for the Plastic Pit Setter that meets your setting requirements.

Example: PMBHH-688-36HB-60 = a Standard Monitor Cover style plastic pit setter with an Inlet Angle Ball Valve, Outlet Angle Dual Check Valve, 1½" Meter, 1½" Inlet connection for Male Iron Pipe, 1½" Outlet Connection for Male Iron Pipe, High By-Pass and an approximate Pit diameter and depth of 36" x 60".

1½" and 2" Pit Setters are standard with a High By-Pass (2" Pit Setters have the By-Pass on the opposite side). The By-Pass can be deleted by omitting the "HB" from the catalog number. Example: PMBHH-688-36-60. For optional Dual Check Valve in by-pass, insert "HC" into the Catalog Number. Example: PMBHH-688-36HBHC-60.

Note: Covers and Extension Rings for Plastic Pit Setters are listed and sold separately in Catalog Section D. A modest selection of covers is shown on pages 12 and 13 of this catalog section.

① *What type of pit setting is required? _____

+

② What type of inlet valve is required? _____

+

③ What type of outlet valve is required? _____

+ (Insert Dash)

④ What meter size is required? _____

+

⑤ What type of inlet connection is required? _____

+ (see note below)

⑥ What type of outlet connection is required? _____

+ (Insert dash) (see note below)

⑦ What pit depth is required? _____

(Depth is measured from ground level to service line.
The service line is approximately 4" higher than bottom
of pit setter.)

Note: Inlet and outlet connections are 1-1/2" in size, for 1-1/2" meter settings, 2" for 2" meters. Female iron pipe by Pack Joint couplings are used to provide PET, PEP or PVC inlet/outlet combinations (see Catalog Section J) and are sold separately.

* Meter Flange S-Tube is supplied. Provide PRV length and connection type with order. PRV Adapters are ordered separately.

** For optional Cartridge Style Dual Check Valve in by-pass insert "HC" into the Code. Example: 36HBHC-36.

SETTING TYPE	CODE
Standard for Monitor Cover	PM
Standard for Single Lid Cover	PS
Standard for Double Lid Cover	PD
* Tandem for Monitor Cover	PTM
* Tandem for Single Lid Cover	PTS
* Tandem for Double Lid Cover	PTD

INLET VALVE TYPE	CODE
Angle Key Valve	V
Angle Ball Valve	B

OUTLET VALVE TYPE	CODE
Angle Ball Valve	B
Angle Key Valve	V
Angle Check Valve	H
Angle Dual Check Valve	HH
No outlet Valve (no by-pass)	-

METER SIZE	CODE
1-1/2" Meter (13" Spacing)	6
2" Meter (17" Spacing)	7

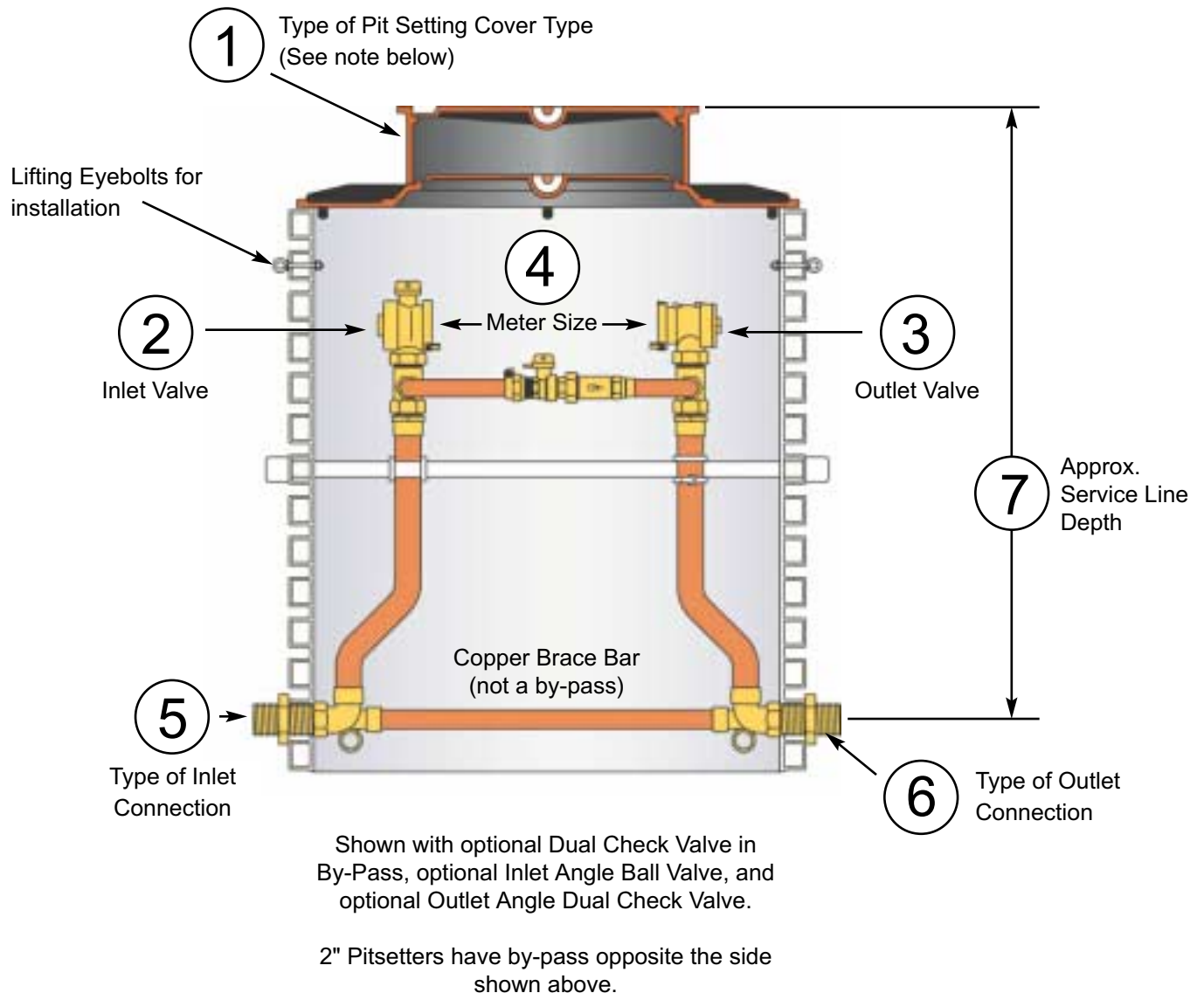
INLET TYPE	CODE
Male Iron Pipe	8

OUTLET TYPE	CODE
Male Iron Pipe	8

APPROX. PIT DIA. AND DEPTH	**CODE
36" x 36"	36HB-36
36" x 42"	36HB-42
36" x 48"	36HB-48
36" x 54"	36HB-54
36" x 60"	36HB-60
36" x 66"	36HB-66
36" x 72"	36HB-72
36" x 78"	36HB-78

Plastic Pit Setters for 1½" and 2" Meters

For Flanged Meter Settings



NOTE: A wide variety of covers can be purchased for Plastic Pit Setters. A complete selection of covers with their specifications and available options are listed in Catalog Section D and must be ordered and priced separately. An abbreviated selection of covers is shown on pages 12 and 13 of this catalog section.

How to Order a Cover

Covers for Plastic Pit Setters are sold and listed separately in **Ford Catalog Section D**. A modest selection of popular covers is listed below. For a complete listing of available lids and covers with their options please refer to **Ford Catalog Section D**. Installation instructions and precautions for lids and covers are in **Ford Catalog Section D**.

Covers with a 10" depth and *inset* lids - The Wabash Double Lid Cover

Inset lids provide an installation that is flush with the surface of the sidewalk or lawn. The inner lid provides greater frost protection for meters. These cast iron covers are 10" in depth and include the lifter Worm Lock with a standard Pentagon Bolt unless a larger bolt is specified.



CATALOG NUMBER	DESCRIPTION		APPROX. WT. LBS.
	LID SIZE*	TILE I.D.	
COVER WITH LOCKING LID			
W2	9-1/2"	18"	42.0
W32	11-1/2"	18"	50.0
W3	11-1/2"	20"	55.0
COVER WITH LOCKLESS LID			
W32-LL	11-1/2"	18"	50.0
W3-LL	11-1/2"	20"	55.0
COVER WITH LOCKING ELECTRONIC METER READING LID			
W2-T	9-1/2"	18"	42.0
W32-T	11-1/2"	18"	50.0
W3-T	11-1/2"	20"	55.0
COVER WITH LOCKING DOUBLE ELECTRONIC METER READING LID			
W32-TT	11-1/2"	18"	50.0
W3-TT	11-1/2"	20"	55.0
EXTRA HEAVY COVER WITH LOCKING LID			
W3H	11-1/2"	20"	89.0
EXTRA HEAVY COVER WITH LOCKING ELECTRONIC METER READING LID			
W3H-T	11-1/2"	20"	89.0

Covers with a 4" depth and *inset* lids - The Type A Single Lid Cover

Inset lids provide an installation that is flush with the surface of the sidewalk or lawn. These cast iron covers are 4" in depth and include the lifter Worm Lock with a standard Pentagon Bolt unless a larger bolt is specified.



CATALOG NUMBER	DESCRIPTION		APPROX. WT. LBS.
	LID SIZE*	TILE I.D.	
TYPE A COVER WITH LOCKING LID			
A2	9-1/2"	18"	30.0
A32	11-1/2"	18"	32.0
A3	11-1/2"	20"	37.0
TYPE A COVER WITH LOCKLESS LID			
A32-LL	11-1/2"	18"	32.0
A3-LL	11-1/2"	20"	37.0
TYPE A COVER WITH LOCKING ELECTRONIC METER READING LID			
A2-T	9-1/2"	18"	30.0
A32-T	11-1/2"	18"	32.0
A3-T	11-1/2"	20"	37.0
TYPE A COVER WITH LOCKING DOUBLE ELECTRONIC METER READING LID			
A32-TT	11-1/2"	18"	32.0
A3-TT	11-1/2"	20"	37.0
EXTRA HEAVY TYPE A COVER WITH LOCKING LID			
A3H	11-1/2"	20"	54.0
EXTRA HEAVY TYPE A COVER WITH LOCKING ELECTRONIC METER READING LID			
A3H-T	11-1/2"	20"	54.0

How to Order a Cover

Covers with a 4" depth and *overlapping* lids - The Type C Single Lid Cover

Overlapping style lid is primarily for installation in lawns. Locking lids have a standard Pentagon Bolt unless a larger size bolt is specified.



CATALOG NUMBER	DESCRIPTION		APPROX. WT. LBS.
	LID SIZE*	TILE I.D.	
COVER WITH LOCKING LID			
C2	9-1/2"	18"	27.0
C12	8"	18"	27.0
C32	11-1/2"	18"	29.0
C52	15"	18"	39.0
C3	11-1/2"	20"	34.0
COVER WITH LOCKLESS LID			
C32-LL	11-1/2"	18"	29.0
C3-LL	11-1/2"	20"	34.0
COVER WITH LOCKING ELECTRONIC METER READING LID			
C12-T	8"	18"	27.0
C32-T	11-1/2"	18"	29.0
C52-T	15"	18"	39.0
C3-T	11-1/2"	20"	34.0
C53-T	15"	20"	47.0
EXTRA HEAVY COVER WITH LOCKING LID			
C32H	11-1/2"	18"	46.0
C3H	11-1/2"	20"	52.0

Cover with a 4" depth and *overlapping* lid - The Ford PMBC-3 Plastic Meter Box Cover

The Ford PMBC-3 plastic meter box cover is an economical alternative to iron covers. Its light weight means reduced shipping costs and easier installation. Constructed of high strength polypropylene, which resists chemical attack and the weakening effect of ultraviolet light, the PMBC-3 fits both 18" and 20" meter pits. As plastic is an excellent insulator, the PMBC-3 provides superior protection against meter pit freeze-ups in all but the harshest climates.



CATALOG NUMBER	DESCRIPTION		APPROX. WT. LBS.
	LID SIZE*	TILE I.D.	
LOCKING LID			
PMBC-3	11"	18" and 20"	8.0

* Lid size indicates pit access opening; lid diameter is approximately 1" larger.

Covers for 1-1/2" and 2" Pit Setters - The Ford Monitor Cover

Monitor Covers are designed for use on large tiles where a large lid opening is desired. Each Monitor Cover consists of a flange casting to fit on the tile, a ring, which is centered in place on the flange by a circular bead, and the top lid with a Lifter Worm Lock. An optional inner lid provides added protection against frost damage in cold climates. The Monitor Cover is not designed to withstand traffic, but heavier lids are available for driveway installations where only light traffic is likely.



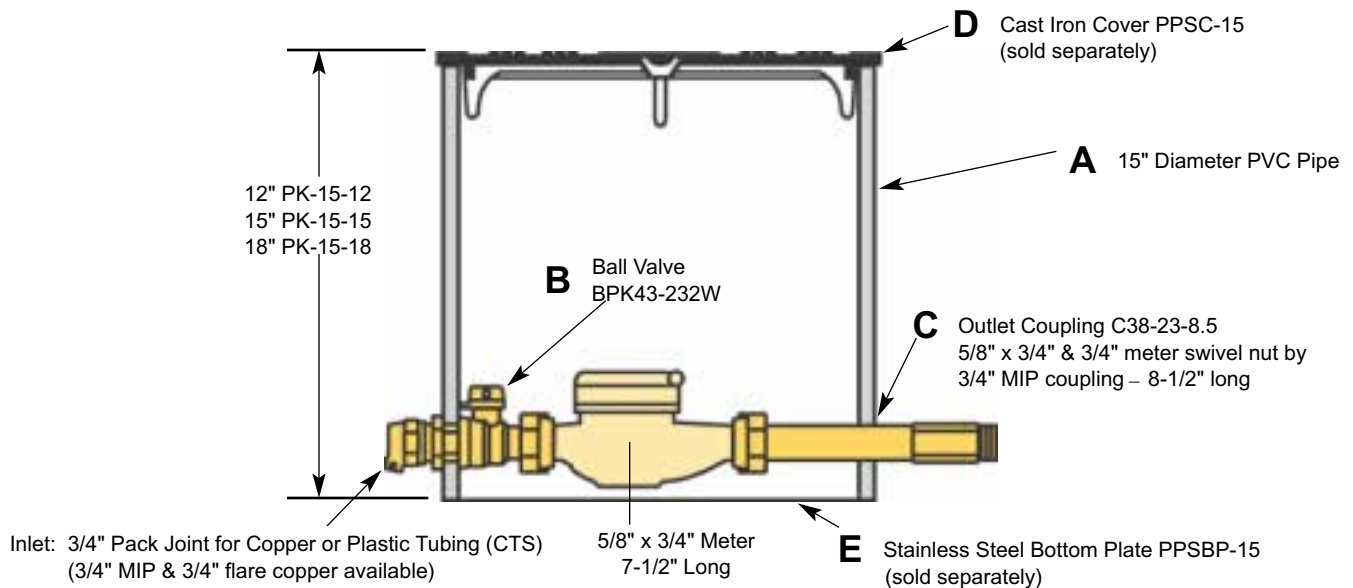
CATALOG NUMBER	DESCRIPTION		APPROX. WT. LBS.
	LID SIZE*	TILE I.D.	
LOCKING LID			
MC-36	20"	36"	185.0
LOCKLESS LID			
MC-36-LL	20"	36"	185.0
LOCKING LID WITH INNER LID			
MC-36-MB	20"	36"	208.0
LOCKING ELECTRONIC METER READING LID WITH INNER LID			
MC-36-MB-T	20"	36"	208.0

* Lid size indicates pit access opening; lid diameter is approximately 1" larger.

Smaller lids for 20" I.D. tile will fit 1-1/2" and 2" Pit Setters by using an EXT-5 Extension Ring, which adapts 20" covers to 36" tile.

The Standard 15" Diameter Style "K" Pit Setter

For 5/8" x 3/4" and 3/4" Meters



3/4" MALE IRON PIPE INLET BY 3/4" MALE IRON PIPE OUTLET

CATALOG NUMBER	DESCRIPTION	HEIGHT
PK288-15-12	Standard Pit Setter (less Lid and Bottom Plate)	12"
PK288-15-15	Standard Pit Setter (less Lid and Bottom Plate)	15"
PK288-15-18	Standard Pit Setter (less Lid and Bottom Plate)	18"

3/4" FLARED COPPER INLET BY 3/4" MALE IRON PIPE OUTLET

CATALOG NUMBER	DESCRIPTION	HEIGHT
PK228-15-12	Standard Pit Setter (less Lid and Bottom Plate)	12"
PK228-15-15	Standard Pit Setter (less Lid and Bottom Plate)	15"
PK228-15-18	Standard Pit Setter (less Lid and Bottom Plate)	18"

3/4" PACK JOINT FOR COPPER OR PLASTIC TUBING INLET* BY 3/4" MALE IRON PIPE OUTLET

CATALOG NUMBER	DESCRIPTION	HEIGHT
PK248-15-12	Standard Pit Setter (less Lid and Bottom Plate)	12"
PK248-15-15	Standard Pit Setter (less Lid and Bottom Plate)	15"
PK248-15-18	Standard Pit Setter (less Lid and Bottom Plate)	18"

NOTE: Cast Iron Cover and Stainless Steel Bottom Plate must be ordered separately.

"K" Pit Setter Components

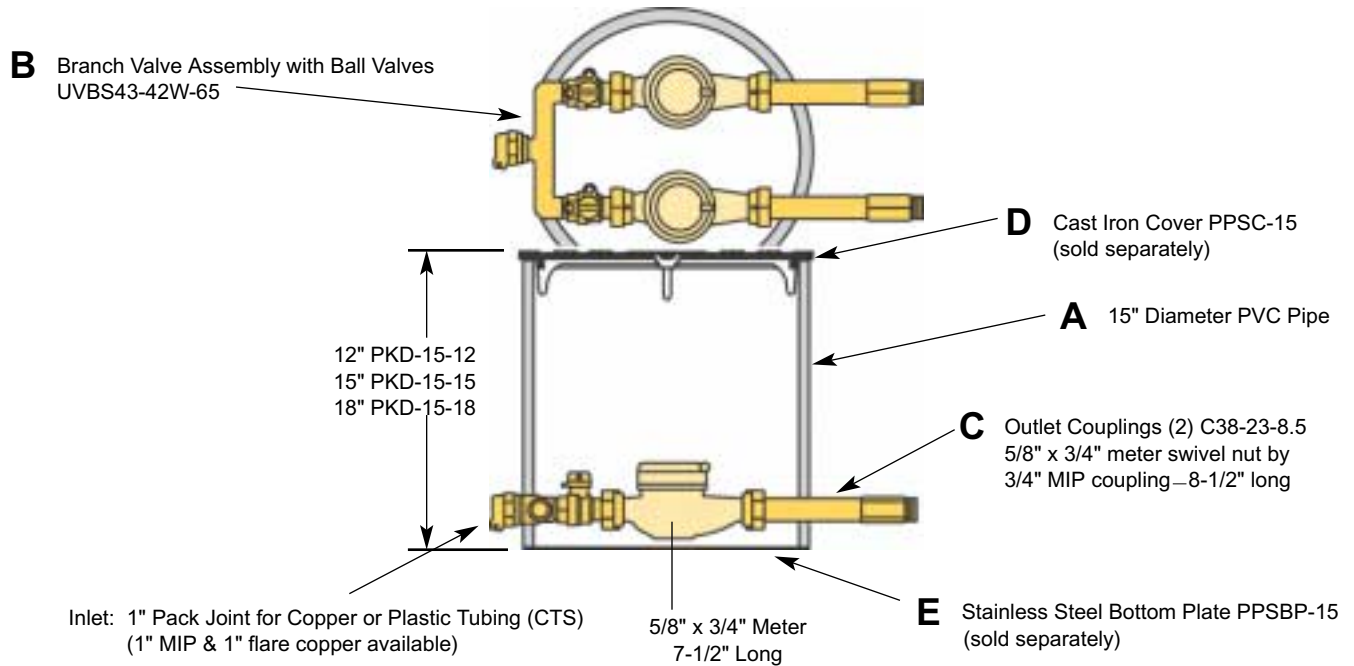
CATALOG NUMBER	COMPONENT CATEGORY	DESCRIPTION
PK-15-12	A	Plastic Pit Only - 12" High
PK-15-15	A	Plastic Pit Only - 15" High
PK-15-18	A	Plastic Pit Only - 18" High
BPK23-232W	B	Ball Valve for 3/4" Flared Copper
BPK43-232W	B	Ball Valve for 3/4" Pack Joint for CTS*
BPK83-232W	B	Ball Valve for 3/4" Male Iron Pipe
C38-23-8.5	C	5/8" x 3/4" & 3/4" Meter by MIP Coupling – 8-1/2" Long
PPSC-15	D	One Piece Flat Cast Iron Cover (No Separate Top Lid)
PPSBP-15	E	Stainless Steel Bottom Plate
Add "R" to Catalog Number		360 Degree turn Ball Valve

Component parts in categories A, B, and C are standard. Components in categories D and E, as well as 360° turning Ball Valves are optional and must be ordered separately.

*Grip Joint - for CTS is available. Add "-G" to the Catalog Number.

The 15" Diameter Style "K" Pit Setter

For Dual 5/8" x 3/4" Meter Settings



1" MALE IRON PIPE INLET BY 3/4" MALE IRON PIPE OUTLET

CATALOG NUMBER	DESCRIPTION	HEIGHT
PKD288-15-12	Dual Pit Setter (less Lid and Bottom Plate)	12"
PKD288-15-15	Dual Pit Setter (less Lid and Bottom Plate)	15"
PKD288-15-18	Dual Pit Setter (less Lid and Bottom Plate)	18"

1" FLARED COPPER INLET BY 3/4" MALE IRON PIPE OUTLET

CATALOG NUMBER	DESCRIPTION	HEIGHT
PKD228-15-12	Dual Pit Setter (less Lid and Bottom Plate)	12"
PKD228-15-15	Dual Pit Setter (less Lid and Bottom Plate)	15"
PKD228-15-18	Dual Pit Setter (less Lid and Bottom Plate)	18"

1" PACK JOINT FOR COPPER OR PLASTIC TUBING INLET* BY 3/4" MALE IRON PIPE OUTLET

CATALOG NUMBER	DESCRIPTION	HEIGHT
PKD248-15-12	Dual Pit Setter (less Lid and Bottom Plate)	12"
PKD248-15-15	Dual Pit Setter (less Lid and Bottom Plate)	15"
PKD248-15-18	Dual Pit Setter (less Lid and Bottom Plate)	18"

"K" Pit Setter for Dual Meter Setting Components

CATALOG NUMBER	COMPONENT CATEGORY	DESCRIPTION
PKD-15-12	A	Plastic Pit Only - 12" High
PKD-15-15	A	Plastic Pit Only - 15" High
PKD-15-18	A	Plastic Pit Only - 18" High
UVBS23-42W-65	B	Branch Valve assembly with Ball Valves 1" Flared Copper to 5/8" x 3/4" Meter
UVBS43-42W-65	B	Branch Valve assembly with Ball Valves 1" Pack Joint for CTS* to 5/8" x 3/4" Meter
UVBS83-42W-65	B	Branch Valve assembly with Ball Valves 1" Male Iron Pipe to 5/8" x 3/4" Meter
C38-23-8.5	C	5/8" x 3/4" Meter by MIP Coupling - 8-1/2" Long
PPSC-15	D	One-Piece Flat Cast Iron Cover (No Separate Top Lid)
PPSBP-15	E	Stainless Steel Bottom Plate
Add "R" to Catalog Number		360 Degree turn Ball Valve

Component parts in categories A, B, and C are standard. Components in categories D and E, as well as 360° turning Ball Valves are optional and must be ordered separately.

*Grip Joint - for CTS is available. Add "-G" to the Catalog Number.

Section FA

Ford Plastic Pit Setters

Warranty

All merchandise is warranted to be free from defects in materials and factory workmanship. We will provide, free of charge, new products in equal quantities for any that prove defective within one year from date of shipment from our factory. Manufacturer shall not be liable for any loss, damage, or injury, direct or consequential, arising out of the use of or the inability to use the product. Before using, user shall determine the suitability of the product for his intended use and user assumes all risk and liability whatever in connection therewith. No claims for labor or consequential damage will be allowed. The foregoing may not be changed except by agreement signed by an officer of the manufacturer.

Please Note:

The Ford Meter Box Company considers the information in this catalog to be correct at the time of publication. Items and option availability, including specifications, are subject to change without notice. Please verify that your product information is current.



The Ford Meter Box Co., Inc. 775 Manchester Avenue, P.O. Box 443, Wabash, Indiana, USA 46992-0443
Telephone: 260/563-3171 FAX: 1-800-826-3487 Overseas FAX: 260/563-0167 <http://www.fordmeterbox.com>