

# Section D

3/2002

# Ford Meter Box Covers



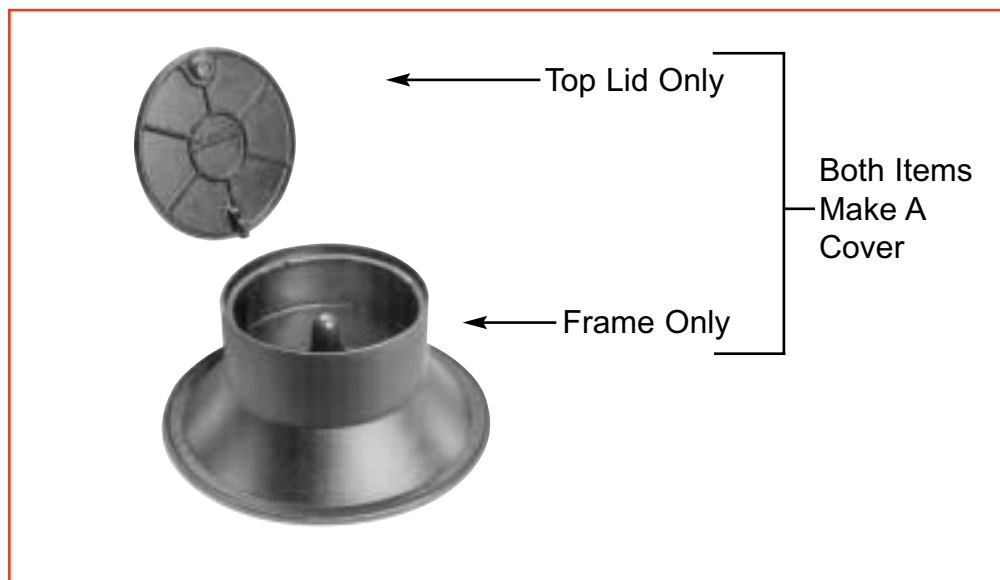
**The Ford Meter Box Co., Inc.** 775 Manchester Avenue, P.O. Box 443, Wabash, Indiana, USA 46992-0443  
Telephone: 260/563-3171 FAX: 1-800-826-3487 Overseas FAX: 260/563-0167 <http://www.fordmeterbox.com>

# Contents

	Page
Meter Box Numbering System .....	3
Meter Box Cover Installation .....	4
Ford Electronic Meter Read Covers .....	4
Ford Lifter Worm Locks .....	5
Pentagon Bolts .....	5
Ford Meter Box Cover and Valve Keys .....	5
Meter Pit Insulating Discs and Blankets .....	5
Ford Wabash Double Lid Covers .....	6
Ford Type A Single Lid Covers .....	7
Ford Type C Single Lid Covers .....	8
Ford Type X Single Lid Covers .....	9
Ford PMBC-3 Plastic Meter Box Cover .....	9
Ford Extension Rings .....	10
Ford Elevator Rings .....	10
Ford Flat Meter Box Covers .....	11
Ford Monitor Covers for Large Settings .....	12
Ford Rectangular Meter Pit Covers .....	13
Ford Round Pit Ring and Lid .....	14
Special Spiked Covers .....	14
Ford Adjustable Cover .....	14
Warranty .....	16



Lids and frames are manufactured from cast iron meeting ASTM A48, Class 25 (25,000 PSI Tensile Strength).



# Ford Meter Box Cover Numbering System

## 15" - 21" Meter Pit Covers

### TYPE OF COVER

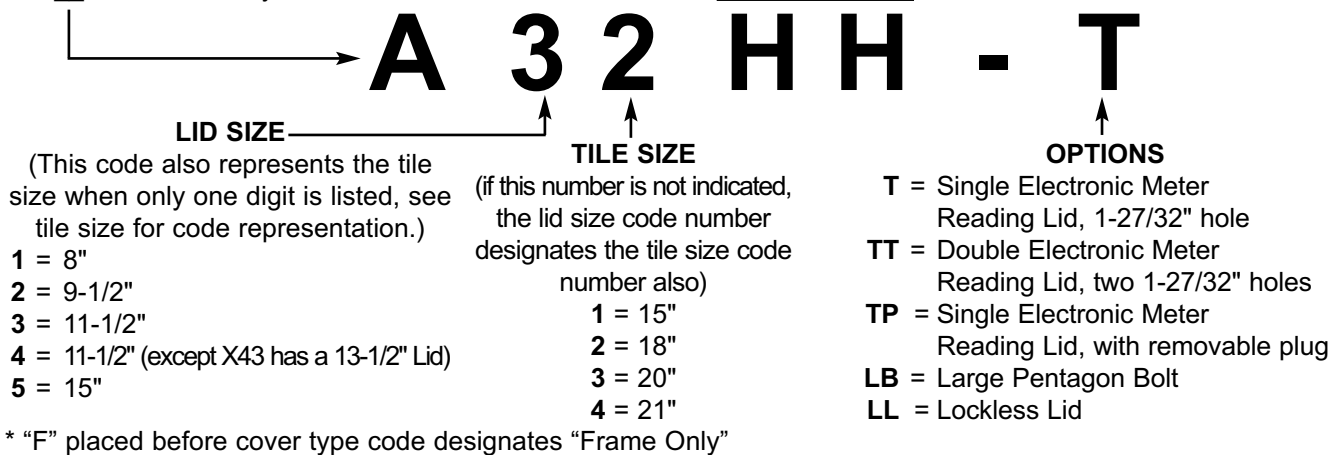
- W** = Wabash Double Lid Cover (10" Depth)
- A** = Recessed Single Lid Cover (4" Depth)
- C** = Overlapping Single Lid Cover (4" Depth)
- X** = Overlapping Single Lid Hinged Cover (4" Depth)
- PMBC** = Overlapping Single Lid Plastic Cover (4" Depth)
- KA** = Flat Cover with inset lid
- A32C** = Spiked Cover 11-1/2" Lid, 18" Pit diameter
- 32B** = Adjustable Cover 11-1/2" Lid, 18" Pit diameter

### TYPE OF TOP LID

- WA** = Wabash, Type "A", Type "KA" Top Lid *ONLY*
- C3** = Special Spiked & Adjustable Top Lid *ONLY*
- \*F** = Frame Only

### LID ONLY AND/OR LID THICKNESS

- L** = Lid only \*
  - H** = Extra Heavy Lid
  - HH** = Double Extra Heavy lid
  - A** = Aluminum Inner Lid with W3 cover instead of plastic
  - D** = Recessed Plastic Inner Lid for W3 Cover
- \* "L" indicates lid only, without frame. The "L" will need to appear with all LID ONLY part numbers.



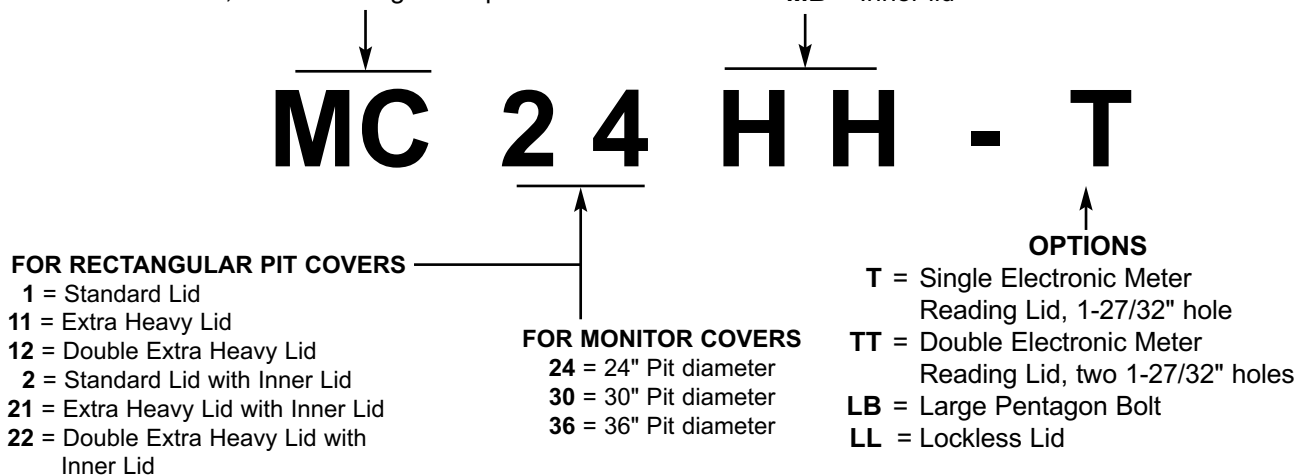
## 24" and Larger Meter Pit Covers

### TYPE OF LID

- MC** = Monitor Covers
- RM** = Rectangular Meter Pit Covers for 2' x 3' Pits
- RML** = Monitor, Pit & Rectangular Top Lid *ONLY*

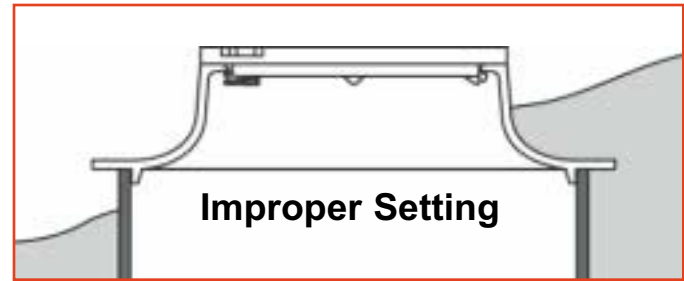
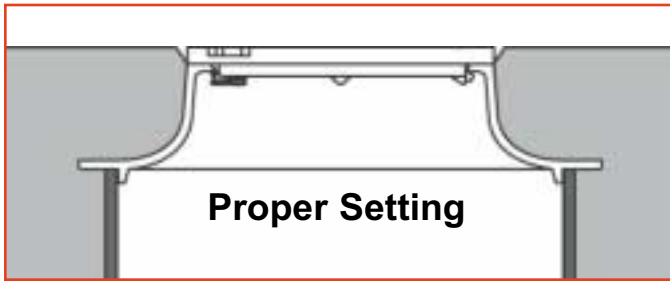
### INNER LID AND LID THICKNESS

- H** = Extra Heavy Lid
- HH** = Double Extra Heavy lid
- MB** = Inner lid



Note: See item listings in catalog section to assure that desired sizes and options are available

# Meter Box Cover Installation



1. Make sure the cover, which consists of a frame and lid, fits securely onto the meter pit. Ford frames have positioning lugs extended from the bottom of the frame to prevent the cover from sliding off of the meter pit.
2. Backfill around the frame and make certain the grade is level with the top of the cover. This will help avoid a tripping hazard.
3. Install lid onto the cover frame and lock securely into place. Locking style lids are preferred to prevent unauthorized removal which could cause a safety hazard. If a lockless style lid is specified, make certain it is placed properly into the frame to prevent sliding or tipping out of position. Ford lockless lids have extra long alignment lugs to help ensure the lid is in place.
4. Lids and frames are designed as a unit and it is not a good practice to intermingle lids and frames from various manufacturers. User assumes all risk of mixing Ford lids with another manufacturer's frame.
5. Check on a regular basis to ensure proper operation of locking devices and to make certain the meter box lid remains at ground level. Always make sure lids are seated properly after each use.

## Ford Electronic Meter Reading Covers

Special lids for a number of Ford cover styles are available with precast holes for a remote electronic meter reading module. These lids are especially configured for this purpose, and are manufactured so that the electronic meter reading module will seat against a flat surface.

Simply drilling a hole in a standard lid to accommodate an electronic meter reading module is not practical for many older lids, as the existing cover support ribs will interfere with the module flanges, and the drilled hole may seriously weaken the lid. Always use a special Ford lid when installing an electronic meter reading module.

**To Order:** For Single Hole Electronic Meter Reading Covers, add one Catalog Number Suffix letter (see table at bottom of page) to the Catalog Number. For example, to add a Single Hole to a Wabash W32 Cover, for the installation of a single module, the Catalog Number would be **W32-T**. Add two T's for a Double Hole Electronic Meter Reading Cover. For example, **W32-TT**. See product listings in this catalog to ensure desired options are available.

A plastic inner lid with a 2" recess is available for taller modules (see page 6) used in Wabash Style Covers with an 11-1/2" opening. Insert "-D" into the Catalog Number. Example: W32-D-T.

An optional cast iron plug, removable for future electronic meter reading module installations, is available for all electronic meter reading lids. This option is designated with a "-TP" for a single hole cover, or a "-TTP" for a double hole cover.



Single Hole



Double Hole

### Ford Cover and Lid Options for Electronic Meter Read Modules

MANUFACTURER	TRADE NAME	METER PIT LID HOLE SIZE	*MODULE HEIGHT AND (DIAMETER)	FORD CATALOG NUMBER OPTION CODE	
				SINGLE HOLE	HOLE WITH PLUG
ABB/Kent Meters, Inc.	Scan Coder	1-27/32"	2-1/2" (1-7/16")	-T	-TP
Badger Meter, Inc.	Dialog®	1-27/32"	3-1/3" (1-3/4")	-T	-TP
Badger Meter, Inc.	Trace®	1-27/32"	4-9/10" (1-3/4" to 3-3/5")	-T	-TP
Neptune	Maxi Pit Pro Read	1-27/32"	4-3/8" (1-3/4" to 2-5/8")	-T	-TP
Neptune	Pit Pro Read	**	***	-NPR	-
Invensys	TouchRead	1-27/32"	4-3/4" (1-3/4" to 2-3/4")	-T	-TP

\* These measurements approximate the module space requirements inside the meter pit. Height measurement is from top of lid to bottom of module. Lid thickness determines the exact module extension into the meter pit.

\*\* Two 5/16" holes with an additional hole for the wire.

\*\*\* Height is adjustable, depending on bolt length.

## Ford Lifter Worm Lock



All locking lids feature a unique "worm" type lock. Two things happen as the key is turned and the lid is opened:

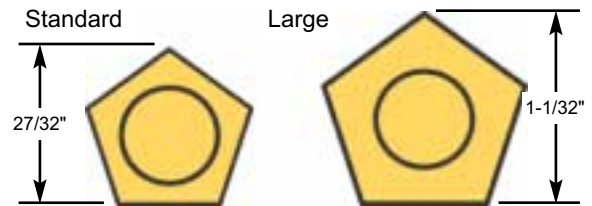
1. The hard cast iron worm rotates, applying a powerful screw-jack action between the lid and cover to break any seal of ice or dirt,

**and**

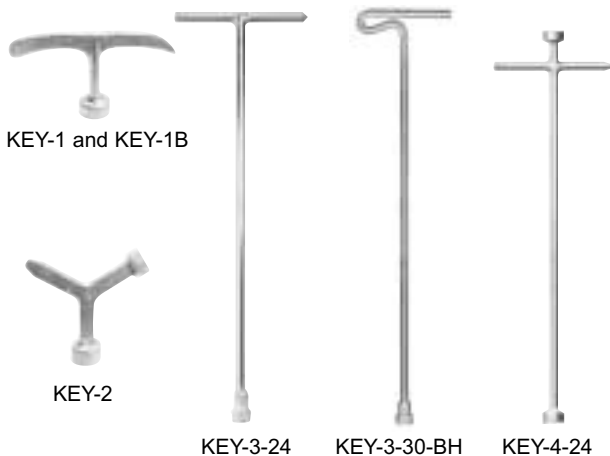
2. The key attaches itself to the forged silicon bronze pentagon bolt, forming a lifter handle for the lid, then automatically disengages from the lid as the cover is locked.

## Pentagon Bolts

Ford supplies Pentagon Bolts in two sizes. The small size, known as the standard waterworks pentagon, is used on all locking covers unless the larger size is specified. To order the large bolt, add "-LB" to the Catalog Number. Add "-LL" for a lockless lid.



# Ford Meter Box Cover and Valve Keys



All keys are cast steel with zinc plating or red shop coat. They attach automatically to bolts of Lifter Worm Locks for lifting the lid. Curb Box Keys for use with Curb Boxes are listed in the Ford Curb Box Catalog Section GA. **Note:** KEY-3 and KEY-4 valve keys will **NOT** work with 1" and 1-1/4" upper section curb boxes. See Catalog Section GA for curb box accessories.

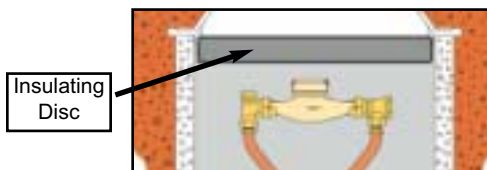
CATALOG NUMBER	DESCRIPTION
KEY-1	No. 1 Key for standard pentagon
KEY-1B	No. 1 Key for large pentagon
KEY-2	Key for standard and large pentagon
KEY-3-24	24" long key for standard pentagon
KEY-3-30-BH	30" long key for standard pentagon, bent handle
KEY-3-36	36" long key for standard pentagon
KEY-3-72	72" long key for standard pentagon
KEY-4-24	24" long key for standard pentagon one end and large pentagon on other Tee end

**Note:** Number 3 and Number 4 keys are slotted for valve operation.

## Closed Cell Insulating Discs

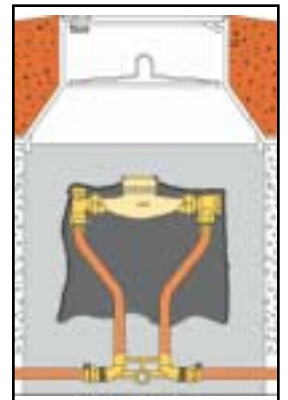
Insulating Discs provide extra protection against meter freeze-ups. The flexible Ford Insulating Discs are 1-1/2 inches thick and have a tie strap handle to assist removal. The close cell material resists moisture absorption.

CATALOG NUMBER	METER PIT DIAMETER
CCID-18	18"
CCID-20	20"
CCID-24	24"



## Meter Pit Insulating Blankets - FIB

The Ford Insulating Blanket helps to prevent meter freeze-ups by trapping heat from the base of the meter pit and concentrating this heat around the meter. Made of 3/32" thick minicel crosslinked polyethylene, the 4 foot by 4 foot blanket is designed to be placed on top of the meter and allowed to drape over the setting. It is an effective, yet inexpensive way of protecting meters in pits that are prone to freezing problems.



# Ford Wabash Double Lid Covers



The inner lid provides greater frost protection for meters. Extra depth, sloping skirt, and a 4" dead air space combine to reduce heat loss. An optional W3BPD Plastic Recessed Inner Lid, for the 11-1/2" size only, is available to accommodate taller electronic meter reading modules. All of the Double Lid Covers with iron top lids have inset lids, which enhance lid stability and allows flush installations with a lawn or cement surface. An optional Plastic Top Lid is available (sets 3/8" above the top of the frame) to allow better radio frequency travel. Lifter Worm Lock has standard size pentagon bolt unless larger size is specified. Inner lids are plastic in 11-1/2" size only; aluminum is optional. WA3L Iron Lid is available with the word "Sewer" marked on it at no extra charge.

CATALOG NUMBERS					LID SIZE*	TILE SIZE I.D.	APPROX. Wt. LBS.
COVER WITH LOCKING IRON LID	COVER WITH LOCKING PLASTIC LID	COVER WITH LOCKLESS IRON LID	COVER WITH LOCKING ELECTRONIC METER READING IRON LID (1-3/4" HOLE)				
			SINGLE HOLE LID	DOUBLE HOLE LID			
W1	—	—	—	—	8"	15"	34.0
W31	W31P	W31-LL	W31-T	W31-TT	11-1/2"	15"	45.0
W2	—	—	W2-T	—	9-1/2"	18"	42.0
W32	W32P	W32-LL	W32-T	W32-TT	11-1/2"	18"	50.0
W3	W3P	W3-LL	W3-T	W3-TT	11-1/2"	20"	55.0
W4	—	W4-LL	W4-T	W4-TT	11-1/2"	21"	56.0
EXTRA HEAVY COVERS							
W3H	—	—	W3H-T	W3H-TT	11-1/2"	20"	89.0

To order covers (11-1/2" size only) with optional Plastic 2" Recessed Inner Lid, add "-D" to the Catalog Number. Examples: W3-D, W3P-D, or W3-D-TT.

## Top Lids Only for Wabash Covers

LID SIZE*	CATALOG NUMBERS				APPROX. WT. LBS.
	LOCKING LID	LOCKLESS LID	LOCKING ELECTRONIC METER READING LID (1-3/4" Hole)		
			SINGLE HOLE LID	DOUBLE HOLE LID	
8" Iron	WA1L	—	WA1L-T	—	5.0
8" Heavy Iron	WA1LH	—	—	—	8.5
9-1/2" Iron	WA2L	—	WA2L-T	—	6.5
11-1/2" Iron	WA3L	WA3L-LL	WA3L-T	WA3L-TT	9.5
11-1/2" Heavy Iron	WA3LH	—	WA3LH-T	WA3LH-TT	22.0
11-1/2" Plastic	WA3LP	—	—	—	—

## Inner Lids Only for Wabash Covers



W3BPD Plastic Inner Lid



Aluminum Inner Lid

CATALOG NUMBER	SIZE	MATERIAL	APPROX. Wt. Lbs.
W1BA	8"	Aluminum	—
W2BA	9-1/2"	Aluminum	—
W3BA	11-1/2"	Aluminum	—
W3BP	11-1/2"	Plastic	—
W3BPD	11-1/2"	Plastic w/ 2" recess	—

**NOTE:** Locking Lids are supplied with a Standard Pentagon Bolt. For an optional Large Bolt, add "-LB" to the Catalog Number. For example, a W3-LB is a W3 Cover with a Large Bolt on the Locking Lid.

\* Lid Size indicates approximate pit access opening; actual lid diameter is approximately 1" larger.



# Ford Type A Single Lid Covers



Inset lids enhance lid stability and allow flush installations with the surface of the sidewalk or lawn. These cast iron covers are 4" in depth and include the lifter Worm Lock with a standard Pentagon Bolt unless a larger bolt is specified. An optional Plastic Top Lid is available (sets 3/8" above the top of the frame) to allow better radio frequency travel. WA3L Iron Lid is available marked "Sewer" at no extra charge.

CATALOG NUMBERS					LID SIZE*	TILE SIZE I.D.	APPROX. Wt. LBS.
COVER WITH LOCKING IRON LID	COVER WITH LOCKING PLASTIC LID	COVER WITH LOCKLESS IRON LID	COVER WITH LOCKING ELECTRONIC METER READING IRON LID (1-3/4" HOLE)				
			SINGLE HOLE LID	DOUBLE HOLE LID			
A1	—	—	—	—	8"	15"	27.0
A31	A31P	A31-LL	A31-T	A31-TT	11-1/2"	15"	28.0
A2	—	—	A2-T	—	9-1/2"	18"	30.0
A32	A32P	A32-LL	A32-T	A32-TT	11-1/2"	18"	32.0
A3	A3P	A3-LL	A3-T	A3-TT	11-1/2"	20"	37.0
A4	—	A4-LL	A4-T	A4-TT	11-1/2"	21"	40.0
—	—	—	A53-T	A53-TT	15"	20"	—
EXTRA HEAVY COVERS							
A1H	—	—	—	—	8"	15"	45.0
A3H	—	—	A3H-T	—	11-1/2"	20"	54.0
DOUBLE EXTRA HEAVY COVERS							
A32HH	—	—	A32HH-T	—	11-1/2"	18"	64.0

## Top Lids Only for Type A Covers

LID SIZE*	CATALOG NUMBERS				APPROX. WT. LBS.
	LOCKING LID	LOCKLESS LID	LOCKING ELECTRONIC METER READING LID (1-3/4" Hole)		
			SINGLE HOLE LID	DOUBLE HOLE LID	
8" Iron	WA1L	—	WA1L-T	—	5.0
8" Heavy Iron	WA1LH	—	—	—	8.5
9-1/2" Iron	WA2L	—	WA2L-T	—	6.5
11-1/2" Iron	WA3L	WA3L-LL	WA3L-T	WA3L-TT	9.5
11-1/2" Heavy Iron	WA3LH	—	WA3LH-T	—	22.0
11-1/2" Plastic	WA3P	—	—	—	—
15" Iron	WA5L	—	WA5L-T	WA5L-TT	—

**NOTE:** Locking Lids are supplied with a Standard Pentagon Bolt. For an optional Large Bolt, add "-LB" to the Catalog Number. For example, an A3-LB is an A3 Cover with a Large Bolt on the Locking Lid.

\* Lid Size indicates approximate pit access opening; actual lid diameter is approximately 1" larger.

# Ford Type C Single Lid Covers



Overlapping style lid is primarily for installation in lawns. Locking lids have a standard Pentagon Bolt unless a larger size bolt is specified when ordering. Numbers C31, C32, C3 and C4 can be furnished with lids marked "GAS" at no extra charge. Other special lid markings are available. Contact your Ford Field Service Representative for details.

CATALOG NUMBERS				LID SIZE*	TILE SIZE I.D.	APPROX. Wt. LBS.
COVER WITH LOCKING LID	COVER WITH LOCKLESS LID	COVER WITH LOCKING ELECTRONIC METER READING LID (1-3/4" HOLE)				
		SINGLE HOLE LID	DOUBLE HOLE LID			
C1	—	C1-T	—	8"	15"	21.0
C21	—	—	—	9-1/2"	15"	25.0
C31	C31-LL	C31-T	C31-TT	11-1/2"	15"	24.0
C12	—	C12-T	—	8"	18"	27.0
C32	C32-LL	C32-T	C32-TT	11-1/2"	18"	29.0
C52	—	C52-T	—	15"	18"	39.0
C3	C3-LL	C3-T	C3-TT	11-1/2"	20"	34.0
C53	—	C53-T	C53-TT	15"	20"	47.0
C4	C4-LL	C4-T	—	11-1/2"	21"	40.0
EXTRA HEAVY COVERS						
C31H	—	—	—	11-1/2"	15"	38.0
C32H	—	C32H-T	C32H-TT	11-1/2"	18"	46.0
C3H	—	C3H-T	—	11-1/2"	20"	52.0

## Top Lids Only for Type C Covers

LID SIZE*	CATALOG NUMBERS				APPROX. WT. LBS.
	LOCKING LID	LOCKLESS LID	LOCKING ELECTRONIC METER READING LID (1-3/4" HOLE)		
			SINGLE HOLE LID	DOUBLE HOLE LID	
8"	C1L	—	C1L-T	—	5.0
9-1/2"	C2L	—	—	—	8.0
11-1/2"	C3L	C3L-LL	C3L-T	C3L-TT	10.0
11-1/2" Heavy	C3LH	—	C3LH-T	—	17.0
15"	C5L	—	C5L-T	C5L-TT	21.0

**NOTE:** Locking Lids are supplied with a Standard Pentagon Bolt. For an optional Large Bolt, add "-LB" to the Catalog Number. For example, a C3-LB is a C3 Cover with a Large Bolt on the Locking Lid.

\* Lid Size indicates approximate pit access opening; actual lid diameter is approximately 1" larger.



# Ford Type X Single Lid Covers



Overlapping style lid (as Type C Covers) but with a specially designed hinge to support the lid when open. The lid is removable. All lids are locking type only, and have standard size pentagon bolts unless larger size bolt is specified. All Type X lids can be marked "GAS" at no extra charge.

CATALOG NUMBERS			LID SIZE*	TILE SIZE I.D.	APPROX. Wt. LBS.
COVER WITH LOCKING LID	COVER WITH LOCKING ELECTRONIC METER READING LID (1-3/4" HOLE)				
	SINGLE HOLE LID	DOUBLE HOLE LID			
X31	X31-T	—	11-1/2"	15"	25.0
X32	X32-T	X32-TT	11-1/2"	18"	29.0
X3	X3-T	—	11-1/2"	20"	35.0
X43	X43-T	—	13-1/2"	20"	39.0
X4	X4-T	X4-TT	11-1/2"	21"	41.0

## Top Lids Only for Type X Covers

LID SIZE*	CATALOG NUMBERS			APPROX. WT. LBS.
	LOCKING LID	LOCKING ELECTRONIC METER READING LID (1-3/4" HOLE)		
		SINGLE HOLE LID	DOUBLE HOLE LID	
11-1/2"	X3L	X3L-T	X43LH-TT	10.5
11-1/2" Heavy	X3LH	-	-	16.5
13-1/2"	X43L	X43L-T	X43L-TT	10.5

**Note:** Locking Lids are supplied with a Standard Pentagon Bolt. For an optional Large Bolt, add "-LB" to the Catalog Number. For example, an X3-LB is an X3 Cover with a Large Bolt on the Locking Lid.

# Ford PMBC-3 Plastic Meter Box Cover

The Ford PMBC-3 plastic meter box cover is an economical alternative to iron covers. Its light weight means reduced shipping costs and easier installation. Constructed of high strength polypropylene, which resists chemical attack and the weakening effect of ultra-violet light, the PMBC-3 fits both 18" and 20" meter pits. Plastic is an excellent insulator; the PMBC-3 provides superior protection against meter pit freeze-ups in all but the harshest climates.

CATALOG NUMBER	LID SIZE*	TILE SIZE I.D.	APPROX. Wt. LBS.
PMBC-3	11"	18" and 20"	8.0

**NOTE:** For plastic meter box cover with a large Pentagon Bolt, add "-LB" to Catalog Number (PMBC-3-LB). Not available with Lockless Lid or TouchRead feature.



\* Lid Size indicates approximate pit access opening; actual lid diameter is approximately 1" larger.

# Extension Rings

For Wabash, A, C, or X Covers



Extension Rings adapt 18" and 20" covers to fit 24", 30" or 36" meter pits.

CATALOG NUMBERS	EXTENSION RING SIZE	APPROX. WT. LBS.
EXT-1	adapts 18" covers to 24" tile	24.0
EXT-2	adapts 20" covers to 24" tile	21.0
EXT-3	adapts 18" covers to 30" tile	49.0
EXT-4	adapts 20" covers to 30" tile	48.0
EXT-5	adapts 20" covers to 36" tile	105.0

## Elevator Rings



Nos. ER15CX and  
ER3CX Rings for  
Types C and X Covers



No. ER25AW and  
ER4AW Rings for Types  
A and Wabash Covers

Elevator Rings raise 11-1/2" diameter lids of Types A, C and X Single Lid Covers and Wabash Double Lid Covers. The ring for Types C and X Covers is attached by three bronze hooks which are included. The ring for Types A and Wabash Covers is held in place by integral cast lugs with locking bolts. In all cases, the lid from the cover fits the ring. Elevator Rings may be stacked for a desired height. Examples: an ER15CX and an ER3CX have a combined height of 4-1/2"; an ER25AW and an ER4AW have a 6-1/2" combined height.

CATALOG NUMBERS	HEIGHT	STYLE COVERS	APPROX. WT. LBS.
ER15CX	1-1/2"	C and X	7.0
ER3CX	3"	C and X	9.0
ER25AW	2-1/2"	A and Wabash	9.0
ER4AW	4"	A and Wabash	12.0

# Ford Flat Meter Box Covers

Ford Flat Meter Box Covers are designed for shallow settings, where the insulation properties of a "hat shaped" design are not necessary. These covers offer the protection of sturdy cast iron construction at an economical price.



## Flat Covers with Lids

CATALOG NUMBERS				LID SIZE*	TILE SIZE I.D.	APPROX. WT. LBS.
COVER WITH LOCKING LID	COVER WITH LOCKLESS LID	COVER WITH LOCKING ELECTRONIC METER READING LID (1-3/4" HOLE)				
		SINGLE HOLE LID	DOUBLE HOLE LID			
KA31	KA31-LL	KA31-T	KA31-TT	11-1/2"	15"	31.0
KA32	KA32-LL	KA32-T	KA32-TT	11-1/2"	18"	37.0

## Top Lid Only for Flat Covers

LID SIZE*	CATALOG NUMBERS				APPROX. WT. LBS.
	LOCKING LID	LOCKLESS LID	LOCKING ELECTRONIC METER READING LID (1-3/4" HOLE)		
			SINGLE HOLE LID	DOUBLE HOLE LID	
11-1/2"	WA3L	WA3L-LL	WA3L-T	WA3L-TT	9.5

## One-piece Flat Covers (no separate top lid)

CATALOG NUMBERS			TILE SIZE I.D.	APPROX. WT. LBS.
COVER	COVER WITH ELECTRONIC METER READING LID (1-3/4" HOLE)			
	SINGLE HOLE LID	DOUBLE HOLE LID		
PPSC-15	PPSC-15-T	PPSC-15-TT	15"	13.0
PPSC-18	PPSC-18-T	PPSC-18-TT	18"	20.0

**NOTE:** Locking Lids are supplied with a Standard Pentagon Bolt. For an optional Large Bolt, add "-LB" to the Catalog Number. For example, a KA31-LB is a KA31 Cover with a Large Bolt on the Locking Lid.

\* Lid Size indicates approximate pit access opening; actual lid diameter is approximately 1" larger.

# Ford Monitor Covers

## For Large Settings

Monitor Covers are designed for use on large tiles where a large lid opening is desired. They are satisfactory for 1-1/2" and 2" meters, or for two or more smaller meters. Each Monitor Cover consists of a flange casting to fit on the tile, a ring which is centered in place on the flange by a circular bead, and a top lid with a Lifter Worm Lock. An optional inner lid provides added protection against frost damage in cold climates. The Monitor Cover is not designed to withstand traffic, but heavier lids are available for driveway installations where only light traffic is likely.



CATALOG NUMBERS				LID SIZE* (DEPTH)	TILE SIZE I.D.	APPROX. Wt. LBS.
COVER WITH LOCKING LID	COVER WITH LOCKLESS LID	COVER WITH LOCKING ELECTRONIC METER READING LID (1-3/4" HOLE)				
		SINGLE HOLE LID	DOUBLE HOLE LID			
MC-24	MC-24-LL	MC-24-T	MC-24-TT	20" (7-1/2")	24"	103.0
MC-30	MC-30-LL	MC-30-T	MC-30-TT	20" (7-1/2")	30"	131.0
MC-36	MC-36-LL	MC-36-T	MC-36-TT	20" (8")	36"	185.0
WITH INNER LIDS						
MC-24-MB	MC-24-MB-LL	MC-24-MB-T	MC-24-MB-TT	20" (7-1/2")	24"	126.0
MC-30-MB	MC-30-MB-LL	MC-30-MB-T	MC-30-MB-TT	20" (7-1/2")	30"	154.0
MC-36-MB	MC-36-MB-LL	MC-36-MB-T	MC-36-MB-TT	20" (8")	36"	208.0

## Top Lids Only for Monitor, Pit and Rectangular Covers

LID SIZE*	CATALOG NUMBERS				APPROX. WT. LBS.
	LOCKING LID	LOCKLESS LID	LOCKING ELECTRONIC METER READING LID (1-3/4" HOLE)		
			SINGLE HOLE LID	DOUBLE HOLE LID	
20"	RML-1	RML-1-LL	RML-1-T	RML-1-TT	32.0
20" Extra Heavy	RML-11	-	RML-11-T	—	56.0
20" Double Extra Heavy		RML-12	RML-12-T	RML-12-TT	65.0

## Parts for Monitor Covers

CATALOG NUMBERS	DESCRIPTION	APPROX. Wt. LBS.
MB	Inner Lid (optional)	23.0
PR	Ring (with lid recess) 6" in height	50.0
FL-24	Flange for 24" I.D. tile	22.0
FL-30	Flange for 30" I.D. tile	49.0
FL-36	Flange for 36" I.D. tile	105.0
PRR-2	2" Riser Ring for Monitor Cover Raised Lid Opening 2"	20.0

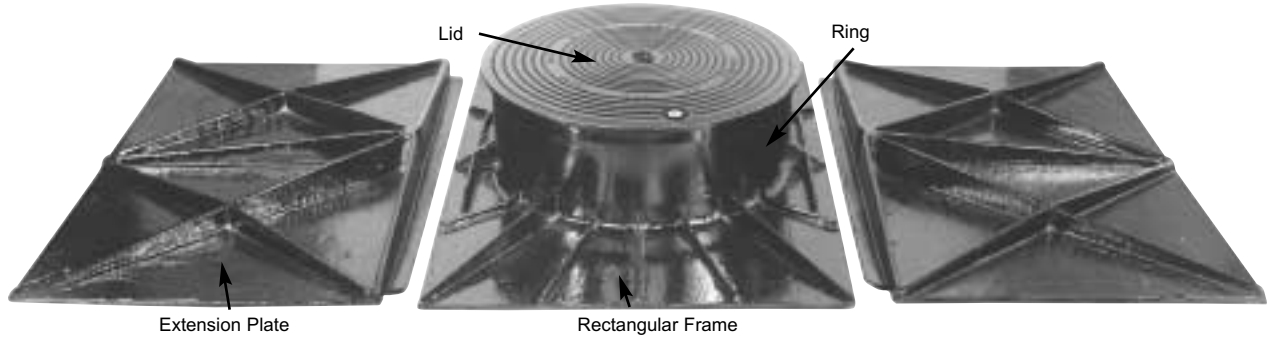
**NOTE:** Locking Lids are supplied with a Standard Pentagon Bolt. For an optional Large Bolt, add "-LB" to the Catalog Number. For example, a MC-30-LB is a MC-30 Cover with a Large Bolt on the Locking Lid.

\* Lid Size indicates approximate pit access opening; actual lid diameter is approximately 1" larger.

# Ford Rectangular Meter Pit Covers

The Rectangular Pit Cover consists of a heavy frame to fit a meter pit 2' x 3', a ring mounted on the frame, a 20" top lid and an optional inner lid. The assembled cover depth is 9". The Rectangular Pit Cover is sturdy but is not recommended to withstand vehicular traffic. Extra heavy and double extra heavy top lids are optional for use under light traffic.

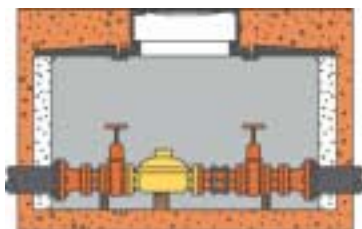
One or two Extension Plates, 2' x 3', will cover pits measuring 3' x 4' or 3' x 6'. The walls of such pits can be precast concrete, poured on the job, or laid up of bricks or blocks.



CATALOG NUMBERS				APPROX. WT. LBS.
COVER WITH LOCKING LID	COVER WITH LOCKLESS LID	COVER WITH LOCKING ELECTRONIC METER READING LID (1-3/4" HOLE)		
		SINGLE HOLE LID	DOUBLE HOLE LID	
RM-1	RM-1-LL	RM-1-T	RM-1-TT	196.0
RM-11 Extra Heavy Top Lid	—	RM-11-T	—	220.0
RM-12 Double Extra Heavy Top Lid	—	RM-12-T	—	229.0
WITH INNER LIDS				
RM-2	RM-2-LL	RM-2-T	RM-2-TT	219.0
RM-21 Extra Heavy Top Lid	—	RM-21-T	—	243.0
RM-22 Double Extra Heavy Top Lid	—	RM-22-T	—	252.0

## Top Lids Only for Rectangular Meter Pit Covers

CATALOG NUMBERS	DESCRIPTION	APPROX. WT. LBS.
RML-1	Standard weight top lid	32.0
RML-11	Extra heavy top lid	56.0
RML-12	Double extra heavy top lid	65.0



Cut-away side view drawing of a typical 3' x 6' rectangular meter pit setting using Extension Plates on each side of the frame.

## Parts for Rectangular Meter Pit Covers

CATALOG NUMBERS	DESCRIPTION	APPROX. WT. LBS.
PR	Ring (with lid recess) for Rectangular Pit Cover 6" in height	50.0
PC	Rectangular frame for Pit Cover	105.0
XP	Extension plate for Rectangular Pit 2' x 3'	134.0
PRR-2	2" Riser Ring for Rectangular Cover Raised Lid Opening 2"	20.0
PB	Iron inner lid (optional)	25.0
RR-1	Ring Casting with standard weight top lid	82.0
RR-11	Ring Casting with extra heavy top lid	106.0
RR-12	Ring Casting with double extra heavy top lid	115.0

Rectangular Meter Pit Covers are available with optional Lockless Lids.

# Round Pit Ring and Lid

The Round Pit Ring and Lid comprises a flanged ring 26" in diameter with a 20" lid. The depth of the ring is 3". The standard weight lid is not intended to withstand traffic, but extra heavy lids are optional and will withstand light traffic.



CATALOG NUMBERS				APPROX. WT. LBS.
RING WITH LOCKING LID	RING WITH LOCKLESS LID	RING WITH LOCKING ELECTRONIC METER READING LID (1-3/4" HOLE)		
		SINGLE HOLE LID	DOUBLE HOLE LID	
10	10-LL	10-T	10-TT	67.0
11 Extra Heavy Top Lid	—	11-T	—	91.0
12 Double Extra Heavy Top Lid	—	12-T	—	101.0

## Round Pit Ring Parts

CATALOG NUMBER	DESCRIPTION	APPROX. WT. LBS.
RPR	Ring for Round Pit Ring	32.0
PRR-2	2" Riser Ring for Round Pit Cover - raised lid opening 2"	20.0

Round Pit Rings are available with Lockless Lids. For Lids only, order style RML from "Parts for Monitor Covers."

# Special Spiked Cover

This Cover with inset lid fits an 18" I.D. meter box barrel. It is 4" in depth with a lid opening of 11-1/2". Lids are interchangeable with Type C lids but are inset, not overlapping. Integral cast iron anchor spikes on frame prevent settling when installed in a concrete walk or driveway.



CATALOG NUMBERS	LID SIZE*	TILE SIZE	APPROX. WT. LBS.
A32C	11-1/2"	18"	34.0
A32CH	11-1/2" Heavy	18"	42.0

# Ford Adjustable Cover

The Adjustable Cover is ideal for grade changes after the initial meter pit installation. This cover fits an 18" I.D. barrel and will adjust from 1-1/2" to 5" above the top of the barrel. The lid is interchangeable with Type C lids (11-1/2" lid opening) but is inset, not overlapping. Two cut-away drawings at right show extremes of adjustability. In the far right drawing, the flange casting is inverted to place lid in as low a position as possible.



CATALOG NUMBERS	LID SIZE*	TILE SIZE	APPROX. WT. LBS.
32B	11-1/2"	18"	46.0

\* Lid Size indicates approximate pit access opening; actual lid diameter is approximately 1" larger.

# Section D

# Ford Meter Box Covers

## Warranty

All merchandise is warranted to be free from defects in material and factory workmanship. We will provide, free of charge, new products in equal quantities for any that prove defective within one year from date of shipment from our factory. Manufacturer shall not be liable for any loss, damage, or injury, direct or consequential, arising out of the use of or the inability to use the product. Before using, user shall determine the suitability of the product for his intended use and user assumes all risk and liability whatever in connection therewith. No claims for labor or consequential damage will be allowed. The foregoing may not be changed except by agreement signed by an officer of the manufacturer.

### **Please Note:**

The Ford Meter Box Company considers the information in this catalog to be correct at the time of publication. Items and option availability, including specifications, are subject to change without notice. Please verify that your product information is current.



**The Ford Meter Box Co., Inc.** 775 Manchester Avenue, P.O. Box 443, Wabash, Indiana, USA 46992-0443  
Telephone: 260/563-3171 FAX: 1-800-826-3487 Overseas FAX: 260/563-0167 <http://www.fordmeterbox.com>