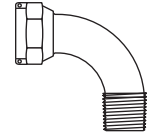
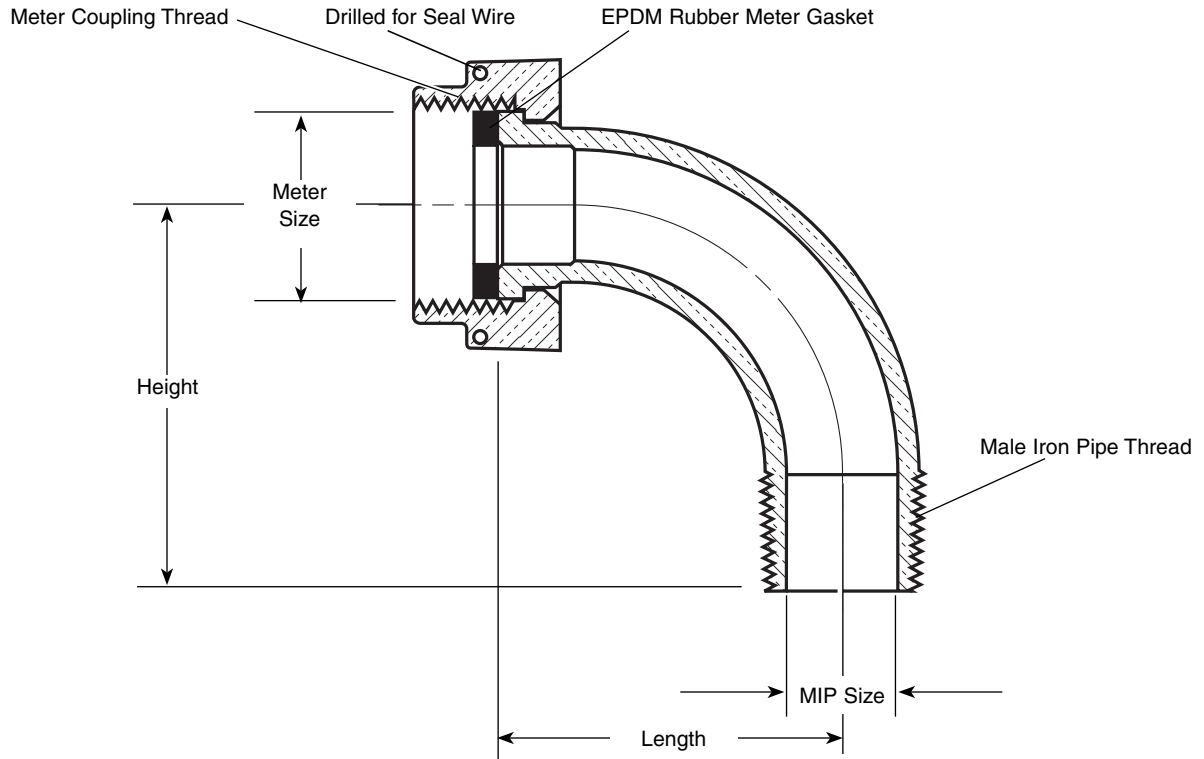


SUBMITTAL INFORMATION

Angle Meter Coupling - (L38-xx style)



METER SWIVEL NUT BY MALE IRON PIPE THREAD



DESCRIPTION		HEIGHT	LENGTH	APPROX. WT. LBS	PART NUMBER	✓ SUBMITTED ITEM(S)
METER SIZE	MIP SIZE					
5/8"	1/2"	1-1/2"	2-3/8"	.5	▼ L38-11	
5/8"x3/4" & 3/4"	3/4"	2-1/4"	2-1/2"	.8	▼ L38-23	
5/8"x3/4" & 3/4"	1"	1-9/16"	1-13/16"	.7	▼ L38-24	
1"	1"	2"	2-9/16"	1.1	▼ L38-44	
1-1/2"	1-1/2"	3"	3-1/2"	3.0	▼▼ L38-66	



▼ UL Classified to ANSI/NSF Standard 61.

▼▼ Add "-K" to end of catalog number for item to be UL classified to ANSI/NSF Standard 61.

FEATURES

- All brass conforms to AWWA Standard C800 (ASTM B-62 and ASTM B-584, UNS NO C83600 - 85-5-5-5)
- Conforms to AWWA C700 for Meter Threads.

The Ford Meter Box Company considers the information in this submittal form to be correct at the time of publication. Item and option availability, including specifications, are subject to change without notice. Please verify that your product information is current.



The Ford Meter Box Company, Inc.

P.O. Box 443, Wabash, Indiana U.S.A. 46992-0443

Phone: 260-563-3171 / Fax: 800-826-3487

Overseas Fax: 260-563-0167

<http://www.fordmeterbox.com>

07/06/04

Submitted By: