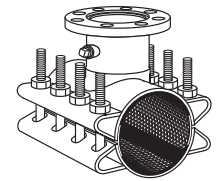


SUBMITTAL INFORMATION

Stainless Steel Tapping Sleeve 4"-12" - (FTSS-xxx-x style)



TAPPING SLEEVE WITH STAINLESS STEEL OR CARBON STEEL FLANGE

Flange - 18-8 stainless steel with recess to accept standard tapping valves. Flange conforms to AWWA C228 Class D ANSI 150# drilling. Optional carbon steel flange, per AWWA C207, is available.

Bolts, Nuts, & Washers - ASTM A240 stainless steel. Heavy hex nuts and washers are coated to prevent galling and maximize bolt efficiency.

Outlet Pipe - Schedule 5. ASTM A240 stainless steel except 4" is Schedule 10

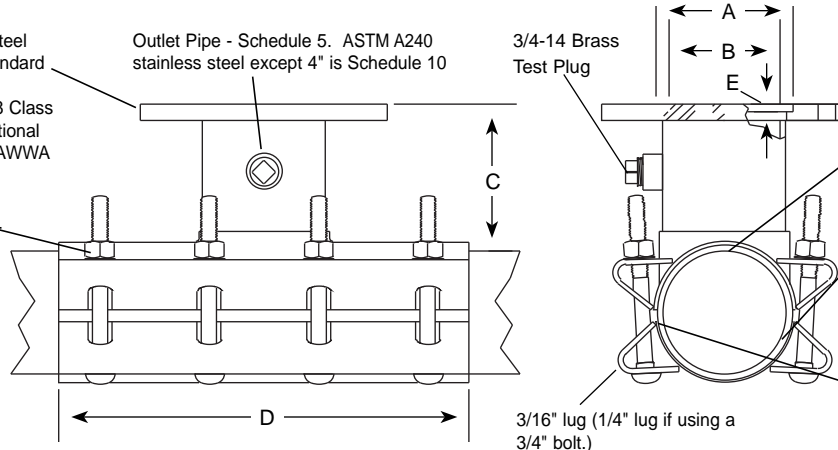
3/4-14 Brass Test Plug



Outlet Gasket - Gridded virgin Buna-N compounded for water service, per ASTM D2000. Outlet gasket assures complete seal of outlet area.

Full Gasket - Gridded virgin SBR compounded for water service, per ASTM D2000. Full gasket gives 360° pipe coverage.

Armors - Heavy gage ASTM A240 stainless steel are vulcanized to gasket and recessed to bridge the gap between lugs.



NOM. PIPE SIZE	SLEEVE O.D. RANGE	CATALOG NUMBER	FLANGED OUTLET SIZE*	APPROX. WT.	NOMINAL DIMENSIONS - INCHES					SADDLE THICKNESS (GAGE)	STRAP THICKNESS (GAGE)	BOLT SIZE	No. BOLTS	✓ SUBMITTED ITEM(S)
					A	B	C	D	E					
4"	4.50-4.80	▼ FTSS-480-	4"	38	5-1/32	4-1/4	5-3/16	15	.28	.105" (12)	.075" (14)	5/8"x6-1/2"	8	
	4.80-5.00	▼ FTSS-500-												
	5.10-5.30	▼ FTSS-530-												
	5.20-5.40	▼ FTSS-540-												
6"	6.63-7.00	▼ FTSS-700-	4"	42	5-1/32	4-1/4	5-3/16	15	.28	.105" (12)	.075" (14)	5/8"x6-1/2"	8	
	6.90-7.10	▼ FTSS-710-		47										
	7.10-7.30	▼ FTSS-730-	6"	47	7-1/32	6-3/8	5-1/2	15	.34	.105" (12)	.075" (14)	5/8"x6-1/2"	8	
	7.30-7.50	▼ FTSS-750-		47										
8"	8.63-9.05	▼ FTSS-905-	4"	42	5-1/32	4-1/4	5-3/16	15	.28	.105" (12)	.075" (14)	5/8"x6-1/2"	8	
	9.05-9.30	▼ FTSS-930-	6"	49										
	9.30-9.60	▼ FTSS-960-		75										
	9.45-9.75	▼ FTSS-975-	8"	75								5/8"-6-1/2"	12	
10"	10.75-11.10	▼ FTSS-1110-	4"	47	5-1/32	4-1/4	5-3/16	15	.28	.105" (12)	.075" (14)	5/8"x6-1/2"	8	
	11.10-11.40	▼ FTSS-1140-	6"	53										
	11.40-11.70	▼ FTSS-1170-	8"	79										
	11.85-12.15	▼ FTSS-1215-	10"	99								3/4"x8-1/2"	12	
12"	12.75-13.20	▼ FTSS-1320-	4"	50	5-1/32	4-1/4	5-3/16	15	.28	.105" (12)	.075" (14)	5/8"x6-1/2"	8	
	13.20-13.50	▼ FTSS-1350-	6"	55										
	13.50-13.80	▼ FTSS-1380-	8"	86										
	14.10-14.40	▼ FTSS-1440-	10"	104								3/4"x8-1/2"	12	
			12"	138								3/4"x8-1/2"	14	

* To order: Add Flanged Outlet Size to catalog number. Example: The complete FTSS catalog number for a 6" pipe (6.90 O.D.) with a 4" stainless steel flange is FTSS-710-4. For a carbon steel flange, add "A" to the catalog number. Example: FTSS-710-4A

▼ UL Classified to ANSI/NSF Standard 61.

FEATURES

- Body, Straps and UNC threaded bolts are made of ASTM A240 stainless steel. Flange can be either Stainless Steel or ASTM A36 Carbon Steel. All welds are fully passivated for corrosion resistance.
- Outlet gasket is Buna-N rubber (ASTM 2000).

The Ford Meter Box Company considers the information in this submittal form to be correct at the time of publication. Item and option availability, including specifications, are subject to change without notice. Please verify that your product information is current.



The Ford Meter Box Company, Inc.
P.O. Box 443, Wabash, Indiana U.S.A. 46992-0443
Phone: 260-563-3171 / Fax: 800-826-3487
Overseas Fax: 260-563-0167
<http://www.fordmeterbox.com>

10/21/08

Submitted By: