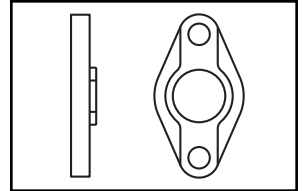
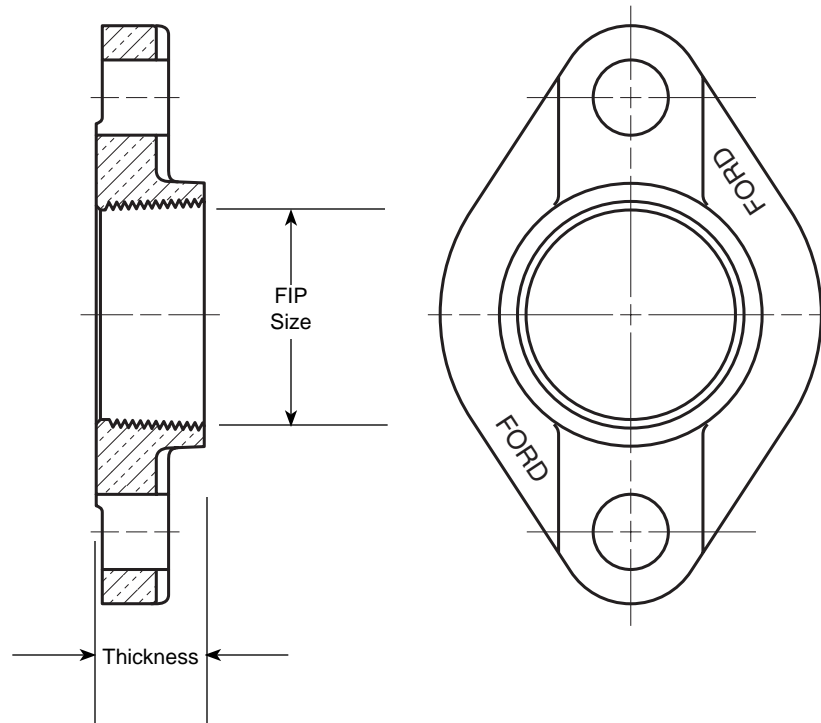


# SUBMITTAL INFORMATION

## Meter Flange - (CF31-xx style)



### METER FLANGE BY FEMALE IRON PIPE THREAD



| DESCRIPTION                               | THICKNESS | APPROX. WT. LBS | PART NUMBER | ✓ SUBMITTED ITEM(S) |
|---|-----------|-----------------|-------------|---------------------|
| 1-1/2" Meter Flange x 1-1/2" Female IP    | 1"        | 2.4             | ▼ CF31-66   |                     |
| 1-1/2" Meter Flange x 2" Female IP Thread | 1"        | 1.9             | ▼ CF31-67   |                     |
| 2" Meter Flange x 2" Female IP Thread     | 1-1/8"    | 3.0             | ▼ CF31-77   |                     |
| 2" Meter Flange x 2-1/2" Female IP Thread | 1-1/8"    | 2.6             | CF31-78     |                     |

▼ UL Classified to ANSI/NSF Standard 61.



## FEATURES

- All brass conforms to AWWA Standard C800 (ASTM B-62 and ASTM B-584, UNS NO C83600 - 85-5-5-5)
- Drop-in meter gaskets are included with all 1-1/2" and 2" meter flanges.

Optional slotted bolt holes on 2" flanges to accomodate 1-1/2" meters.

The Ford Meter Box Company considers the information in this submittal form to be correct at the time of publication. Item and option availability, including specifications, are subject to change without notice. Please verify that your product information is current.



### The Ford Meter Box Company, Inc.

P.O. Box 443, Wabash, Indiana U.S.A. 46992-0443

Phone: 260-563-3171 / Fax: 800-826-3487

Overseas Fax: 260-563-0167

<http://www.fordmeterbox.com>

07/01/04

Submitted By: