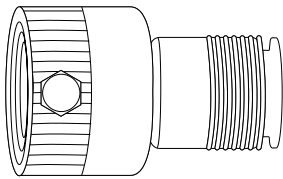


# SPECIFICATION SHEET MODEL 730 ( 3/4" )

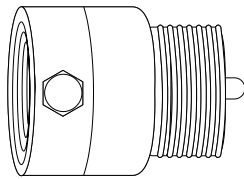


## Hose Bibb Vacuum Breaker



### Self Draining

Model 730 DSB - Brass



### Manual Draining

Model 730 DMB - Brass  
Model 730 DBC - Chrome

## Features

The Model 730 Hose Bibb Vacuum Breaker is fitted directly to the valve, before the hose connection. The operating principle is very easy: a special membrane inside ensures the water flows from the valve to the pipe only; when the flow tries to return to the line, the membrane opens the venting slits on the body of the Vacuum Breaker, thus allowing the discharge of the water outside.

The prominence of the membrane on the lower part of the Vacuum Breaker is used during the winter period to discharge the water remaining inside, avoiding the risk of freezing.

## Description

The Model 730 Hose Bibb Vacuum Breaker is used in all water connections to distribution lines using flexible plastic pipes. Its function is to avoid the polluted water returning to the line, i.e. a garden watered by a pipe connected to a drain valve with hose connection; when in a condition of low pressure upstream or counterpressure at the drain point, there could be a return of unhealthy water to the line.

A typical example is when a pipe is used to fill up water tanks containing stagnant water or chemical products for agricultural treatment. A Vacuum breaker for garden valves is able to eliminate any kind of pollution risk, thus avoiding great damage to the mains which could be reflected on the community.

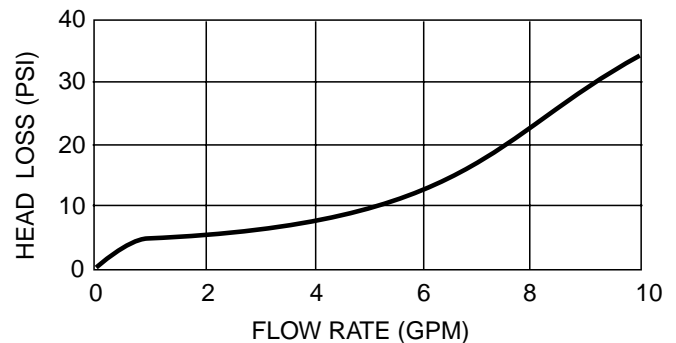
## Agency Compliance

ASSE Listed 1012

## Characteristics

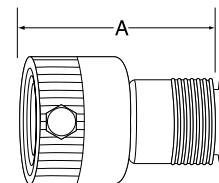
Size:	3/4" x 3/4"
Maximum working pressure:	145 PSI (1000 kPa)
Working Temperature:	40° - 194° F (4° - 90° C)

## Flow Characteristics



## Dimensions and Weights

Model 730 DSB



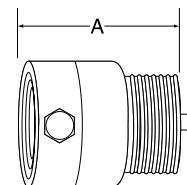
U.S. Inches (Metric)

SIZE	A	lbs. (kgs)
3/4"	1 3/4 (44)	.5 (.23)

Note: Dimensions are nominal. Allowances must be made for normal manufacturing tolerances.

Model 730 DMB

Model 730 DMC



U.S. Inches (Metric)

SIZE	A	lbs. (kgs)
3/4"	1 1/6 (30)	.5 (.23)

Note: Dimensions are nominal. Allowances must be made for normal manufacturing tolerances.

**FEBCO Backflow Prevention**  
P.O. Box 8070 • Fresno, CA 93747-8070  
559 252-0791 • Fax: 559 453-9030 • [www.cmb-ind.com](http://www.cmb-ind.com) • [www.FEBCOonline.com](http://www.FEBCOonline.com)

SS730 02/01 Copyright 2001 CMB Industries, Inc.



**CMB Industries, Inc.**  
A United Dominion Company

ISO 9001 Certified