

# SPECIFICATION SHEET MODEL TC1



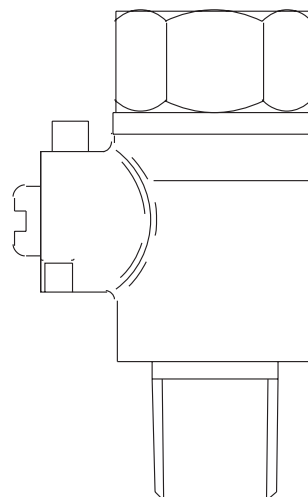
## Bronze, Full Port Test Cock

### Ball Valve Shut-off Typical Applications

- Test cock for backflow preventers
- Isolation valve for gauges
- Balancing Valve for gauges

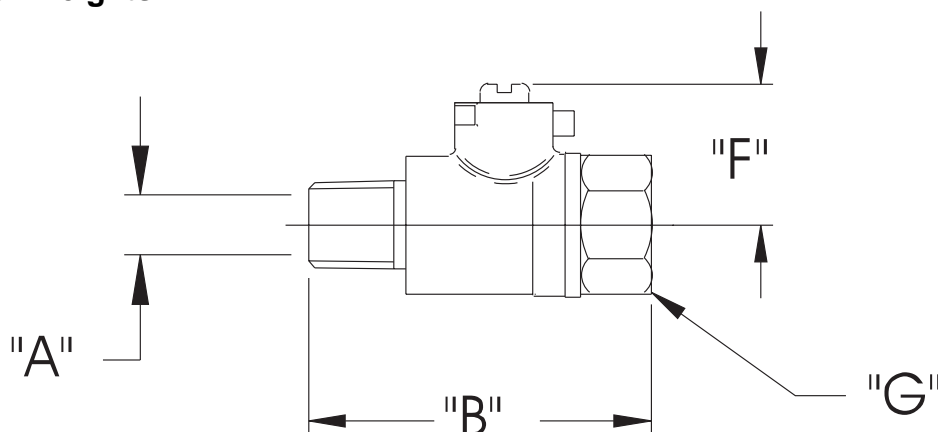
### Features

- Bronze body
- Full port design for low pressure drop.
- PTFE stem packing seal, thrust washer and seat.
- Quarter turn open or close with slot for coin or screw driver to operate.
- Ideal for throttling and balancing applications of non-abrasive fluids where minimum flow is 20% to 100% of valve capacity.
- Low operating torque.



**MODEL TC1**  
**Sizes 1/8M x 1/4F, 1/4M x 1/4F**

### Dimensions - Weights



SIZE	P/N	A		B		F		G		WEIGHT	
		in	mm	in	mm	in	mm	in	mm	lbs	kg
1/8M x 1/4F	781074	.12 x .25	3.0 x 6.4	1.75	44.5	0.66	16.8	0.68	17.3	0.06	0.03
1/4M x 1/4F	781075	0.25	6.4	1.88	47.8	0.66	16.8	0.68	17.3	0.06	0.03

