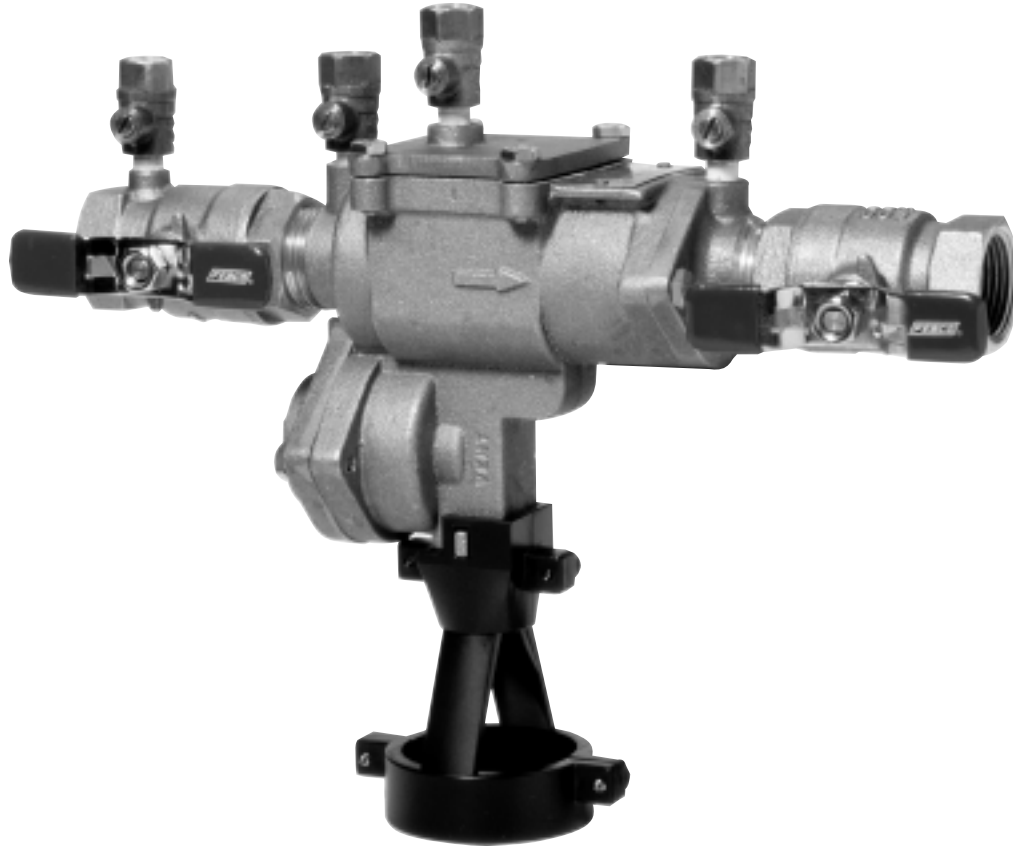


# SPECIFICATION SHEET MODEL 601 (1½" - 2")



## Air Gap Drain

*For Use with MasterSeries Model 860 / 860U / 860F / 880 / 880U (1½" - 2")*



### Features

- Reduces amount of water splashing in area around reduced pressure assemblies.
- Funnels moderate relief valve discharge into drain.
- Designed to fit standard 2" pipe.

### Operation

The air gap drain is designed to be installed under the 860 / 860U 1½"-2" reduced pressure assemblies to catch moderate relief valve discharge due to pressure fluctuations and/or minor check valve fouling.

**NOTE: The air gap drain is not designed to catch the maximum flows possible from the devices. Water line pressure, size and length of drain piping limits the amount of water handled by the AGD system.**

### Specifications

The air gap drain shall be corrosion resistant material with stainless steel mounting fasteners. The drain must be of a design that allows mounting by attachment of the drain to the relief valve of a reduced pressure assembly.

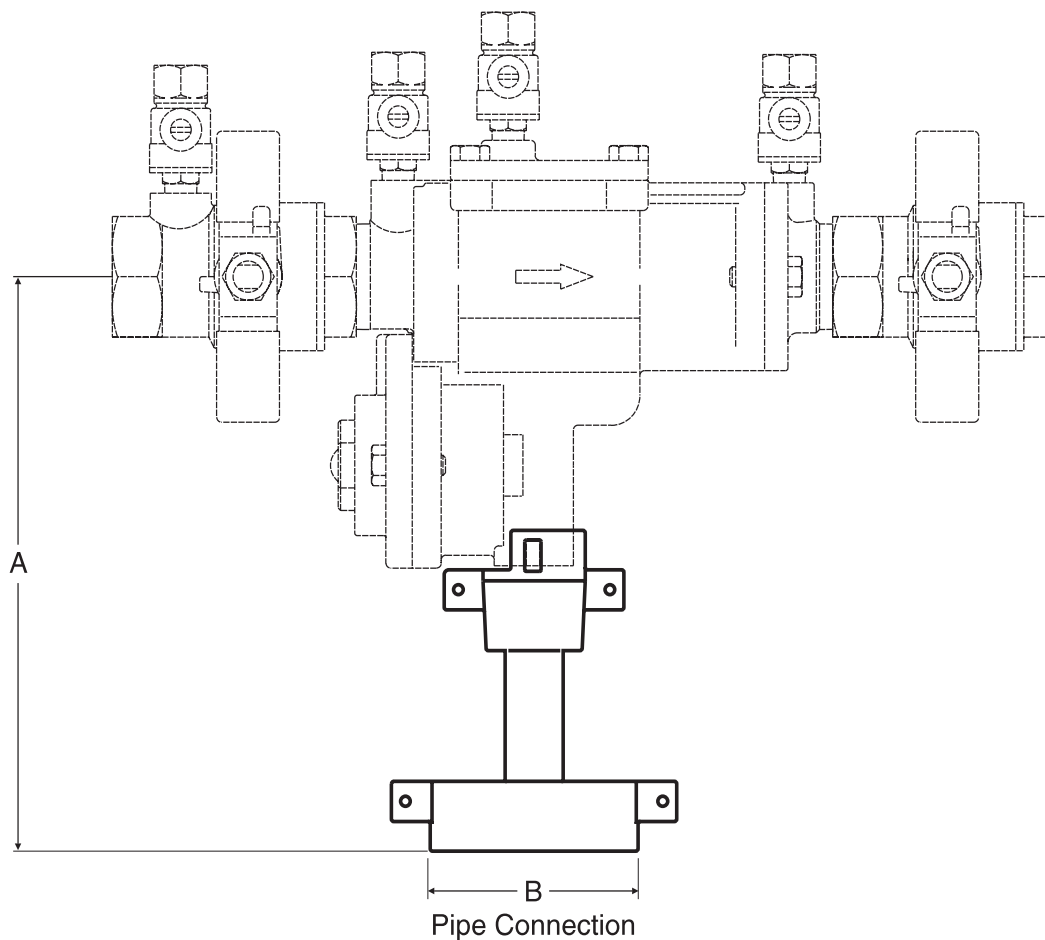
The air gap shall provide connection for a minimum drain size of 2" drain pipe. Smaller diameter drain pipe shall not be allowed in order to minimize potential overflow water damage. Larger diameter drains are acceptable by use of standard pipe connectors.

The air gap drain shall be FEBCO Model 601 (1½" - 2").

**NOTE: Consult local codes to insure drain installation meets all local requirements.**

### Materials

Corrosion resistant ABS funnel and stainless steel mounting fasteners.



## Installation Instructions

1. Before installation check local codes. This type of drain may not be approved for use in some areas.

**CAUTION: This drain is intended to catch moderate relief valve discharges due to line pressure fluctuations and minor check valve fouling. Under certain conditions relief valves can discharge water at rates greater than the drain capacity.**

2. If installed indoors, the assembly should be installed near a floor drain sized to adequately handle discharge.
3. After installation of backflow assembly and piping, attach drain funnel to relief as shown, using self tapping screws provided in kit to join drain funnel halves together, making sure that the slots in the drain funnel are located over tabs on relief valve port.

**NOTE: Discharge of drain funnel is a slip fit design. Drain funnel was not deigned to, nor is it able to support drainpipe weight.**

## Dimensions

Size in. (mm.)	A	B	P/N
1/2" (12)	7 1/8" (180.9)	2" PIPE	905-358
3/4" (20)	7 1/8" (180.9)	2" PIPE	905-358
1" (25)	7 1/4" (184.1)	2" PIPE	905-358
1 1/4" (30)	13" (330.2)	2" PIPE	905-359
1 1/2" (40)	13" (330.2)	2" PIPE	905-359
2" (50)	13" (330.2)	2" PIPE	905-359

