

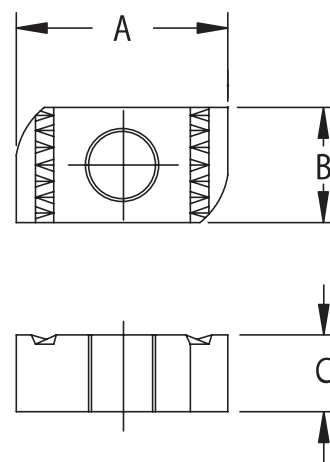
CHANNEL NUT NUT

Without Spring

- Size Range: #8, #10, 1/4", 5/16", 3/8", 1/2", 5/8", 3/4" and 7/8" thread sizes
- Surface Finish: Electro-zinc plated
- Fits 'A', 'B', 'D', 'E' and 'M' channels
- Also available in 304 Stainless Steel for 1/4", 3/8" and 1/2" sizes



Part Number	Thread Size	A	B	C
NUT0008EG	#8 – 32	1-3/8"	3/4"	1/4"
NUT0010EG	#10 – 24	1-3/8"	3/4"	1/4"
NUT0025EG	1/4" – 20	1-3/8"	3/4"	1/4"
NUT0031EG	5/16" – 18	1-3/8"	3/4"	1/4"
NUT0037EG	3/8" – 16	1-3/8"	3/4"	3/8"
NUT0050EG	1/2" – 13	1-3/8"	3/4"	1/2"
NUT0062EG	5/8" – 11	1-3/8"	1-1/8"	1/2"
NUT0075EG	3/4" – 10	1-3/8"	1-1/8"	1/2"
NUT0087EG	7/8" – 9	1-3/8"	1-1/8"	1/2"



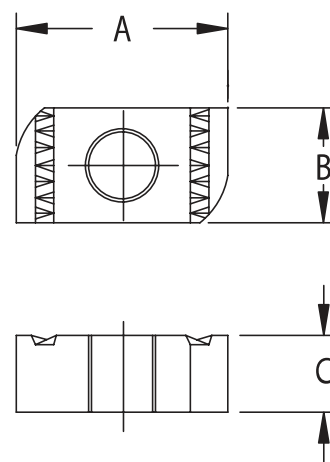
CHANNEL NUT NUTC

Without Spring

- Size Range: 1/2", 5/8", 3/4" and 7/8" thread sizes
- Surface Finish: Electro-zinc plated
- Fits 'C' channel
- Also available in 304 Stainless Steel for 1/4", 3/8" and 1/2" sizes



Part Number	Thread Size	A	B	C
NUTC0050EG	1/2 – 13	1-3/8"	3/4"	3/8"
NUTC0062EG	5/8 – 11	1-3/8"	1-1/8"	3/8"
NUTC0075EG	3/4 – 10	1-3/8"	1-1/8"	3/8"
NUTC0087EG	7/8 – 9	1-3/8"	1-1/8"	3/8"



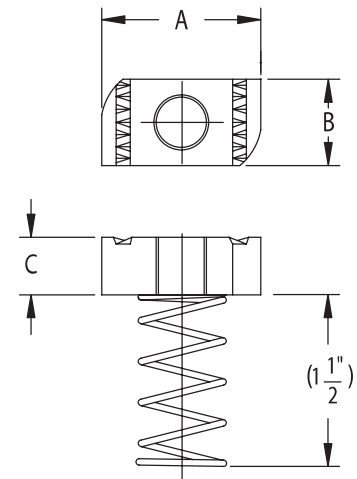
CHANNEL NUT SPRA

Spring Nut

- Size Range: #8, #10, 1/4", 5/16", 3/8", 1/2", 5/8", 3/4" and 7/8" thread sizes
- Surface Finish: Electro-zinc plated
- Fits 'A', 'B', and 'M' channels
- Also available in 304 Stainless Steel for 1/4", 3/8" and 1/2" sizes



Part Number	Thread Size	A	B	C
SPRA0008EG	#8 – 32	1-3/8"	3/4"	1/4"
SPRA0010EG	#10 – 24	1-3/8"	3/4"	1/4"
SPRA0025EG	1/4 - 20	1-3/8"	3/4"	1/4"
SPRA0031EG	5/16 – 18	1-3/8"	3/4"	1/4"
SPRA0037EG	3/8 – 16	1-3/8"	3/4"	3/8"
SPRA0050EG	1/2 - 13	1-3/8"	3/4"	1/2"
SPRA0062EG	5/8 – 11	1-3/8"	1-1/8"	1/2"
SPRA0075EG	3/4 - 10	1-3/8"	1-1/8"	1/2"
SPRA0087EG	7/8 – 9	1-3/8"	1-1/8"	1/2"



CHANNEL NUT SPRC

Spring Nut

- Size Range: #8, #10, 1/4", 5/16", 3/8", 1/2", 5/8", 3/4" and 7/8" thread sizes
- Surface Finish: Electro-zinc plated
- Fits 'C' & 'M' channels
- Also available in 304 Stainless Steel for 1/4", 3/8" and 1/2" sizes



Part Number	Thread Size	A	B	C
SPRC0008EG	#8 – 32	1-3/8"	3/4"	1/4"
SPRC0010EG	#10 – 24	1-3/8"	3/4"	1/4"
SPRC0025EG	1/4 - 20	1-3/8"	3/4"	1/4"
SPRC0031EG	5/16 – 18	1-3/8"	3/4"	1/4"
SPRC0037EG	3/8 – 16	1-3/8"	3/4"	3/8"
SPRC0050EG	1/2 - 13	1-3/8"	3/4"	3/8"
SPRC0062EG	5/8 – 11	1-3/8"	1-1/8"	3/8"
SPRC0075EG	3/4 - 10	1-3/8"	1-1/8"	3/8"
SPRC0087EG	7/8 – 9	1-3/8"	1-1/8"	3/8"

