

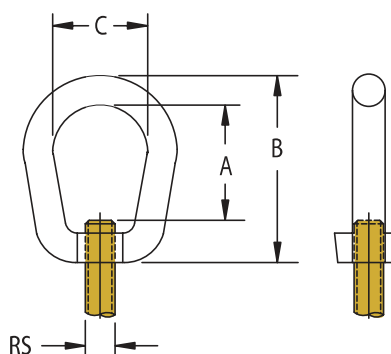
## HARDWARE EYE NUT 35

### Forged Steel Eye Nut

- Size Range: 3/8" thru 7/8" rod sizes
- Surface Finish: Plain
- Intermediate accessory for high temperature piping used in conjunction with Models: #320, #360, #361, #450, #451, #452 and #453
- Conforms with Federal Specification WW-H-171 (Type 17), Manufacturers Standardization Society MSS-SP-58 (Type 17); install in accordance with ANSI/MSS-SP-69



Part Number	RS	A	B	C	MRI	Max. Rec. Load (lbs)
0350037PL	3/8"	1-3/4"	3-1/8"	1"	5/8"	1250
0350050PL	1/2"	1-11/16"	3-1/8"	1-1/2"	3/4"	2250
0350062PL	5/8"	1-11/16"	3-1/8"	1-1/2"	3/4"	3600
0350075PL	3/4"	1-11/16"	3-1/8"	1-1/2"	3/4"	5200
0350087PL	7/8"	2-1/4"	4-3/8"	2"	1-1/8"	7200



## HARDWARE SWIVEL SWFF

### Swivel Female-Female

- Size Range: 3/8" and 1/2" rod sizes
- Surface Finish: Electro-zinc Plated
- Threaded rod attachment with the capability to swivel



Part Number	RS	A	Max. Rec. Load (lbs)
SWFF0037EG	3/8"	2-3/4"	1000
SWFF0050EG	1/2"	3"	1800

