

ELKAY[®]

SPECIFICATIONS

Gourmet Single Bowl Sinks Models PSR and PSRQ Series, and PSRADQ – A.D.A. Compliant Series

GENERAL

Fine quality sink formed of #20 gauge, type 304 (18-8) nickel bearing stainless steel. Top mount.

DESIGN FEATURES

Bowl Depth: 7-1/4" (184mm) (PSRS(Q)3322), 7-1/2" (191mm) (PSR(Q)2521 and PSR(Q)2522), 5-1/2" (140mm) (PSRADQ1919), 7-1/8" (181mm) (all others).

Coved Corners: 1-3/4" (44mm) vertical and horizontal radius.

Rim Height: 3/8" (10mm) PSR(Q)2522; 5/32" (4mm) all others

Finish: Exposed surfaces are polished to a Bright Satin finish.

Underside: Fully undercoated to dampen sound and reduce condensation.

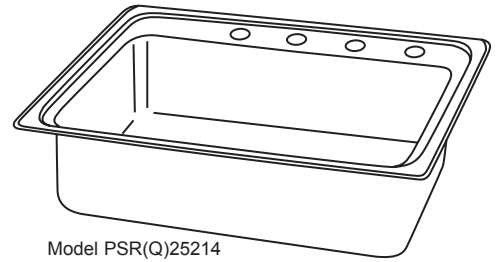
OTHER

Drain Opening: 3-1/2" (89mm) (see back page for location).

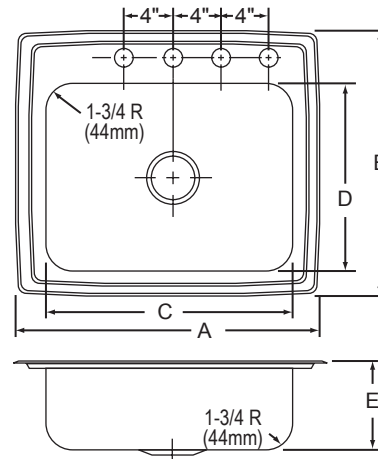
Sink complies with ASME A112.19.3-2008 / CSA B45.4-08.



These sinks are listed by the International Association of Plumbing and Mechanical Officials as meeting the requirements of the Uniform Plumbing Code.



Model PSR(Q)25214



SINK DIMENSIONS (INCHES)*

| U-Channel Model Number | Quick-Clip [®] Model Number | Overall | | Inside Each Bowl | | | Cutout in Countertop (1-1/2" (38mm) Radius Corners) | | No. of 1-1/2" (38mm) Dia. Faucet Holes 4" (102mm) Center | Minimum Cabinet Size |
|------------------------------|--|-------------------|-------------------|---------------------|-------------------|------------------|--|-------------------|--|----------------------------|
| | | L | W | L | W | D | L | W | | |
| | | A | B | C | D | E | | | | |
| PSR1517 | PSRQ1517 | 15 (381mm) | 17-1/2 (445mm) | 12 (305mm) | 12 (305mm) | 7-1/8 (181mm) | 14-3/8 (365mm) | 16-7/8 (429mm) | 1, 2, MR2 or 3 | 18 |
| PSR1716 | PSRQ1716 | 17 (432mm) | 16 (406mm) | 14 (356mm) | 10 (254mm) | 7-1/8 (181mm) | 16-3/8 (416mm) | 15-3/8 (391mm) | 1, 2, MR2, 3 or OS4 | 21 |
| PSR1720 | PSRQ1720 | 17 (432mm) | 20 (508mm) | 14 (356mm) | 14 (356mm) | 7-1/8 (181mm) | 16-3/8 (416mm) | 19-3/8 (492mm) | 1, 2, MR2, 3 or OS4 | 21 |
| PSR1722 | PSRQ1722 | 17 (432mm) | 22 (559mm) | 13-1/2 (343mm) | 16 (406mm) | 7-1/8 (181mm) | 16-3/8 (416mm) | 21-3/8 (543mm) | 1, 2, MR2, 3 or OS4 | 21 |
| PSR1918 | PSRQ1918 | 19 (483mm) | 18 (457mm) | 16 (406mm) | 11-1/2 (292mm) | 7-1/8 (181mm) | 18-3/8 (467mm) | 17-3/8 (441mm) | 1, 2, MR2, 3 or OS4 | 24 |
| PSR2219 | PSRQ2219 | 22 (559mm) | 19-1/2 (495mm) | 18 (457mm) | 14 (356mm) | 7-1/8 (181mm) | 21-3/8 (543mm) | 18-7/8 (479mm) | 1, 2, MR2, 3, 4 or 5 | 27 |
| PSR2222 | PSRQ2222 | 22 (559mm) | 22 (559mm) | 19 (483mm) | 16 (406mm) | 7-1/8 (181mm) | 21-3/8 (543mm) | 21-3/8 (543mm) | 1, 2, MR2, 3, 4 or 5 | 27 |
| PSR2521 | PSRQ2521 | 25 (635mm) | 21-1/4 (540mm) | 21 (533mm) | 15-3/4 (400mm) | 7-1/2 (191mm) | 24-3/8 (619mm) | 20-5/8 (524mm) | 1, 2, MR2, 3, 4 or 5 | 30 |
| PSR2522 | PSRQ2522 | 25 (635mm) | 22 (559mm) | 21 (533mm) | 15-3/4 (400mm) | 7-1/2 (191mm) | 24-3/8 (619mm) | 21-3/8 (543mm) | 1, 2, MR2, 3, 4 or 5 | 30 |
| PSR3122 | PSRQ3122 | 31 (787mm) | 22 (559mm) | 28 (711mm) | 16 (406mm) | 7-1/8 (181mm) | 30-3/8 (772mm) | 21-3/8 (543mm) | 1, 2, MR2, 3, 4 or 5 | 36 |
| Not Available | PSRADQ191955L | 19-1/2 (495mm) | 19 (483mm) | 16 (406mm) | 13-1/2 (343mm) | 5-1/2 (140mm) | 18-7/8 (479mm) | 18-3/8 (467mm) | 1, 2, MR2, 3 or OS4 | 24 |
| Not Available | PSRADQ191955R | 19-1/2 (495mm) | 19 (483mm) | 16 (406mm) | 13-1/2 (343mm) | 5-1/2 (140mm) | 18-7/8 (479mm) | 18-3/8 (467mm) | 1, 2, MR2, 3 or OS4 | 24 |
| PSRS3322 | PSRSQ3322 | 33 (838mm) | 22 (559mm) | 28 (711mm) | 16 (406mm) | 7-1/4 (184mm) | 32-3/8 (822mm) | 21-3/8 (543mm) | 1, 2, MR2, 3, 4 or 5 | 36 |

*Length is left to right. Width is front to back.

THIS PRODUCT AS CONSTRUCTED IS SUBJECT TO INTERPRETATION OF A.D.A. REQUIREMENTS.
THE UNOBSTRUCTED KNEE SPACE REQUIRED TO SATISFY A.D.A. STANDARDS MAY NOT BE DESIRABLE.

In keeping with our policy of continuing product improvement, Elkay reserves the right to change product specifications without notice.

This specification describes an Elkay product with design, quality and functional benefits to the user. When making a comparison of other producers' offerings, be certain these features are not overlooked.

Elkay

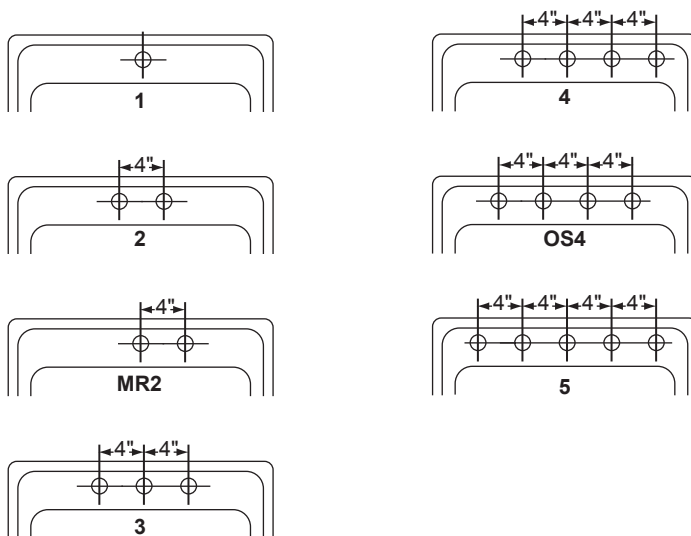
elkayusa.com

2222 Camden Court
Oak Brook, IL 60523

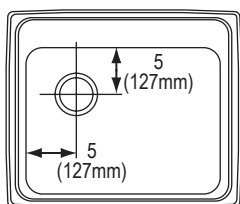
Printed in U.S.A.
©2010 Elkay

(Rev. 7/10) 1-187D

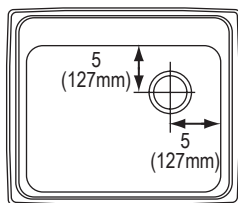
HOLE DRILLING CONFIGURATIONS



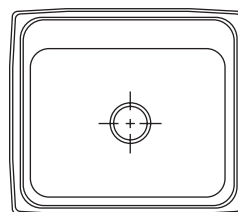
DRAIN OPENING LOCATIONS



Off-Centered Left
 PSRADQ191955L Model Only

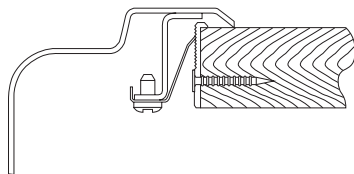


Off-Centered Right
 PSRADQ191955R Model Only



Centered
 (All Other Models)

Quick-Clip® Mounting System



U-Channel Type Mounting System

