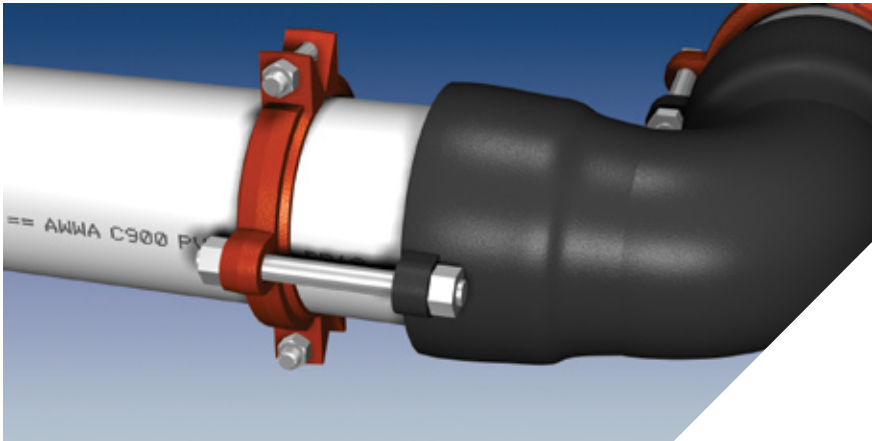
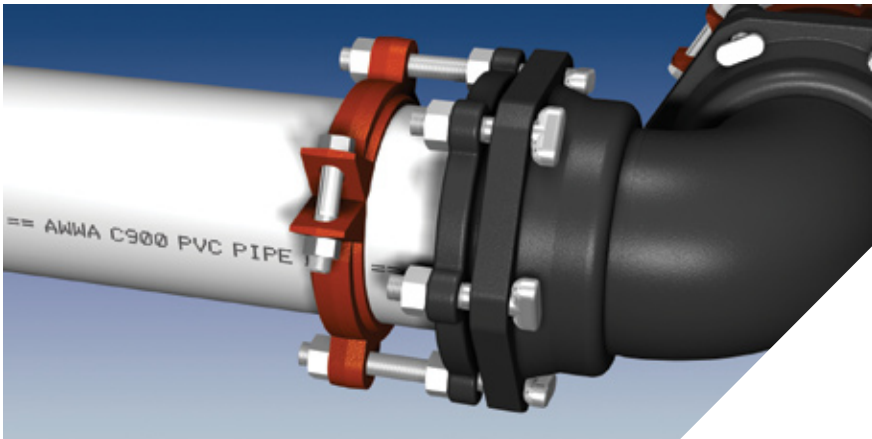


Series 15PF00 Series 15MJ00

Restraint for C900 PVC Pipe at Ductile Iron Fittings



Series 15PF06 restraining a push-on fitting with restraining ears.



Series 15MJ06 restraining a mechanical joint fitting with a mechanical joint gland.

Features and Applications:

- **15PF00**
 - For restraining AWWA C900 PVC pipe systems using push-on fittings with restraining ears
- **15MJ00**
 - For restraining AWWA C900 PVC pipe systems using mechanical joint fittings and mechanical joint gland
- **MEGA-BOND® Coating System**
For more information on MEGA-BOND, visit our website at www.ebaa.com
- Minimum 2 to 1 Safety Factor
- Split design for ease of installation
- Constructed of A536 Ductile Iron

For use on water or wastewater pipelines subject to hydrostatic pressure and tested in accordance with either AWWA C600, C605 or ASTM D2774.

Nominal Pipe Size	Series Number	Series Number	Approximate Shipping Weight	Pressure Ratings (PSI)		
				DR14 Class 200	DR18 Class 150	DR25 Class 100
4	15PF04	15MJ04	7.6	200	150	100
6	15PF06	15MJ06	10.6	200	150	100
8	15PF08	15MJ08	13.8	200	150	100
10	15PF10	15MJ10	27.2	200	150	100
12	15PF12	15MJ12	29.9	200	150	100

NOTE: For applications or pressures other than those shown, please contact EBAA for assistance. Derate pressure rating if not all connecting bolts were used.

Restraint Ring Tooth Impressions on PVC Pipe.



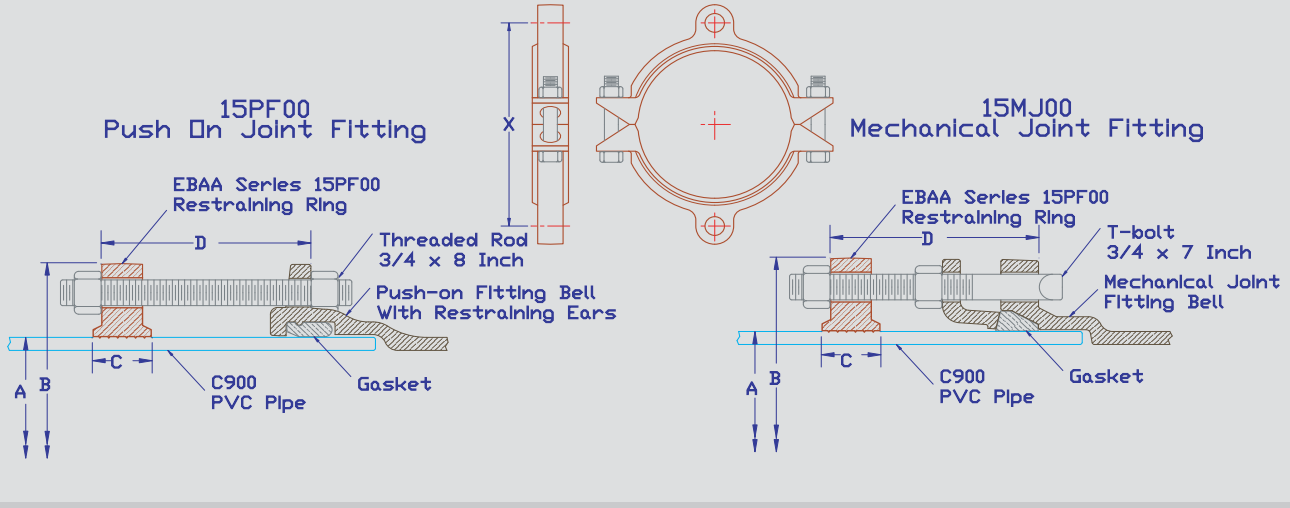
Sample Specification

Restraint for push-on bells supplied with restraint ears or mechanical joints in AWWA C900 PVC pipe systems shall consist of the following: The restraint shall be manufactured of ductile iron conforming to ASTM A536. A split serrated ring shall be used to grip the pipe in conjunction with a sufficient number of bolts connecting the serrated restraint to the joint. The combination shall have a minimum working pressure rating equivalent to the pipe. The restraint devices shall be coated with MEGA-BOND. (For complete specifications on MEGA-BOND visit www.ebaa.com.) The restraint for Push-On fittings shall be the Series 15PF00; The restraint for mechanical joint fittings shall be the Series 15MJ00, both as manufactured by EBAA Iron, Inc., or an approved equal.

Submittal Reference Drawing

EBAA IRON

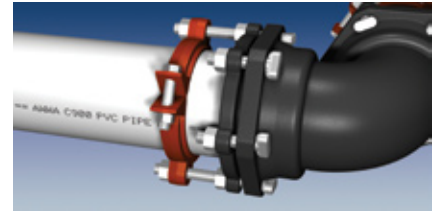
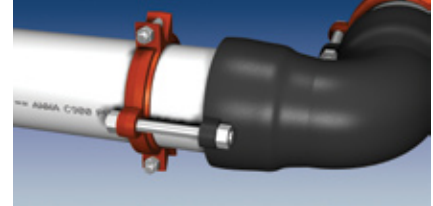
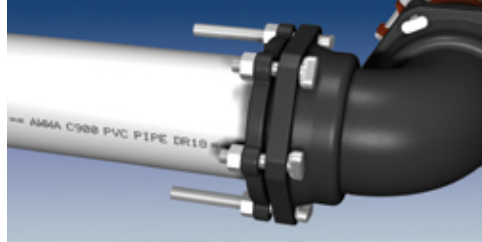
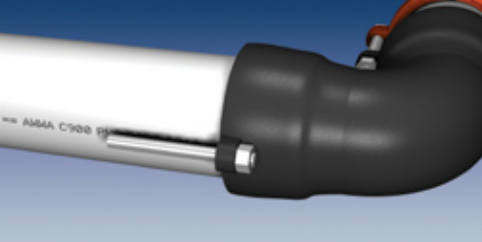
MADE IN USA



Nominal Pipe Size	Series Number	Series Number	A Pipe O.D.	B Max. Restraint O.D. (casing clearance)	C Restraint Ring Width	D Restraint Ring Location	* Thrust Bolt Quantity	X Thrust Bolt Circle (Min. - Max.)
4	15PF04	15MJ04	4.80	9.25	1.25	6	2	7.5
6	15PF06	15MJ06	6.90	11.25	1.63	6	2	9.5
8	15PF08	15MJ08	9.05	14.75	1.63	6	2	11.32 - 13.00
10	15PF10	15MJ10	11.1	16.85	2.15	6	4	13.48 - 14.94
12	15PF12	15MJ12	13.2	19.45	2.15	6	4	15.94 - 17.66

NOTE: Dimensions are in inches and are subject to change without notice.
*Derate pressure rating if not all connecting bolts were used.

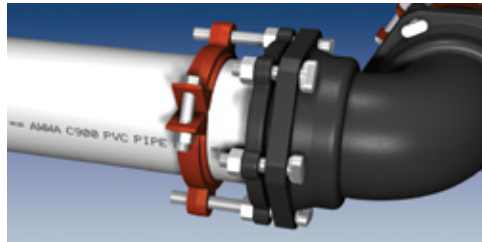
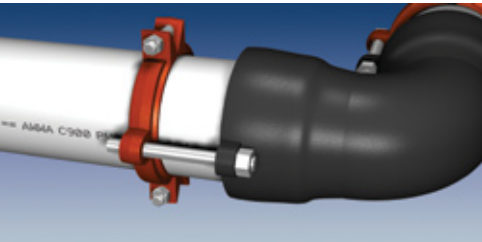
Installation Instructions



The Series 15PF00 is designed for restraining C900 PVC pipe at ductile iron fittings supplied with restraining ears. The Series 15MJ00 is designed for restraining C900 PVC pipe at ductile iron fittings supplied with mechanical joints. They have a split, serrated restraint ring on the spigot and attaches to the fitting with connecting thrust rods.

1. Assemble joint per the pipe and fitting manufacturer's instructions. In case of mechanical joint, create seal according to mechanical joint gland manufacturer's instructions.

3. Tighten the connecting thrust rods until snug; do not over tighten connecting thrust rods as to move the spigot further into the joint.



2. Using the connecting thrust rods to determine the proper restraint location, install both halves of the restraint by tapping them into place. Allow enough room on the connecting thrust rods to fully engage the nuts with several threads showing. Make sure the ID of the restraint is touching the pipe before installing and tightening of side bolts. Side bolts are to be evenly tightened to 110 ft-lbs of torque (60 ft-lbs on 4 inch and 6 inch). A torque indicating wrench will help facilitate this.

EBAA IRON Sales, Inc.

P.O. Box 857, Eastland, TX 76448

Tel: (254) 629-1731

Fax: (254) 629-8931

(800) 433-1716 within US and Canada

contact@ebaa.com

www.ebaa.com

