



Your Connection to the Future

# SERIES 15PF00

Restraint for C900 PVC  
Pipe at Ductile Iron Fittings



## Features and Application:

- For restraining AWWA C900 PVC pipe systems using either push on fittings with restraining ears or mechanical joint fittings.
- Minimum 3 to 1 Safety Factor.
- Split design for ease of installation.
- Constructed of ASTM A536, 65-45-12 Ductile Iron.
- For use on water or wastewater pipelines subject to hydrostatic pressure and tested in accordance with either AWWA C600 or ASTM D2774.



Nominal Pipe Size	Series Number	Approximate Shipping Weight	Pressure Ratings (C900)		
			DR 14 Class 200	DR 18 Class 150	DR 25 Class 100
4	15PF04	7.6	200	150	100
6	15PF06	10.6	200	150	100
8	15PF08	13.8	200	150	100
10	15PF10	27.2	200	150	100
12	15PF12	29.9	200	150	100

Note: For applications or pressures other than those shown, please contact EBAA for assistance.  
Derate pressure rating if not all connecting bolts were used.

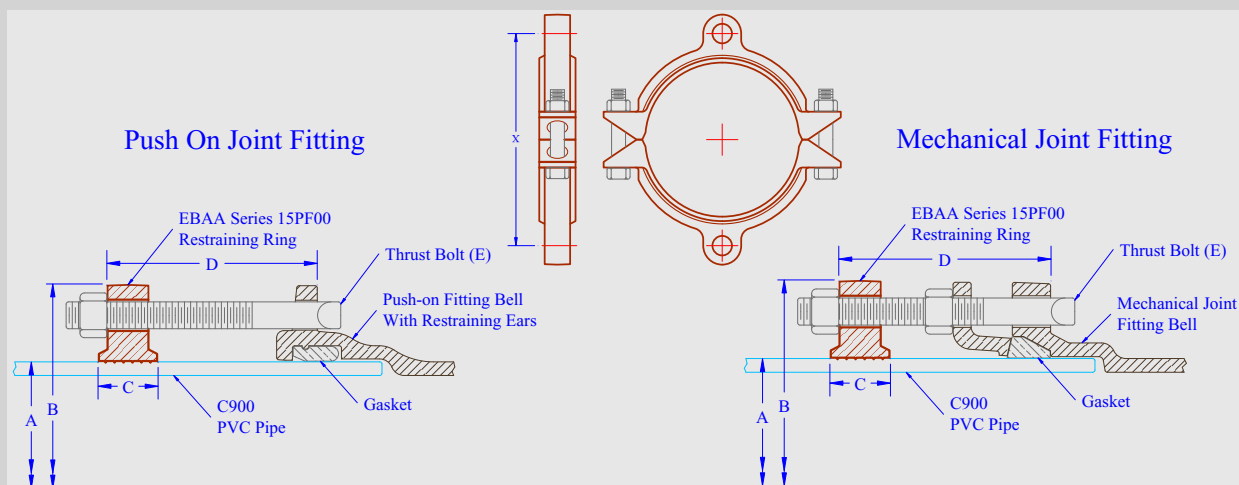


## Sample Specification

Restraint for push on bells supplied with restraint ears or mechanical joints in AWWA C900 PVC pipe systems shall consist of the following: The restraint shall be manufactured of ductile iron conforming to ASTM A536. A split serrated ring shall be utilized to grip the pipe in conjunction with a sufficient number of bolts connecting the serrated restraint to the joint. The combination shall have a minimum working pressure rating equivalent to the pipe. The restraint shall be the Series 15PF00 as manufactured by EBAA Iron, Inc. or approved equal.

## Series 15PF00 Submittal Reference Drawing

E B A A  
I R O N

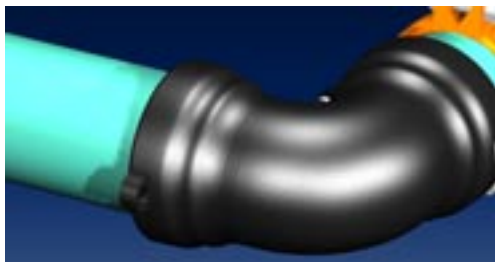


M a d e  
i n  
U S A

Nominal Pipe Size	Series Number	A Pipe O.D.	B Max. Restraint O.D. (Casing Clearance)	C Restraint Ring. Width	D Restraint Ring Location	E Thrust Bolt (Number - Size)	X Thrust Bolt Circle (Min. - Max)
4	15PF04	4.80	9.25	1.25	6	2 - 3/4 x 7	7.5
6	15PF06	6.90	11.25	1.63	6	2 - 3/4 x 7	9.5
8	15PF08	9.05	14.75	1.63	6	2 - 3/4 x 7	11.32 - 13.00
10	15PF10	11.10	16.85	2.15	6	4 - 3/4 x 7	13.48 - 14.94
12	15PF12	13.20	19.45	2.15	6	4 - 3/4 x 7	15.94 - 17.66

### Installation Instructions

Note: Dimensions are in inches and are subject to change without notice.



1. The Series 15PF00 is designed for restraining C900 PVC pipe bells supplied with restraining ears and mechanical joints. It has a split, serrated restraining ring on the spigot and attaches to the joint with connecting bolts.

2. Assemble joint per the pipe manufacturer's instructions. In case of mechanical joint, create seal according to manufacturer's instructions.



3. Using the connecting bolts to determine the proper restraint location, install both halves of the restraint by tapping them into place. Allow enough room on connecting bolts to fully engage the nuts. Make sure the complete ID of the restraint is touching the pipe before installing and tightening of side bolts. Side bolts are to be evenly tightened to 110 ft - lbs of torque (60 ft - lbs on 4" and 6").



### EBAA IRON Sales, Inc.

P.O. Box 857, Eastland, TX 76448

Tel: (254) 629-1731

Fax: (254) 629-8931

(800) 433-1716 within US and Canada

ebaa@eastland.net

www.ebaa.com



4. Tighten the connecting bolts until snug. Do not over tighten connecting bolts as to move the spigot further into the joint.