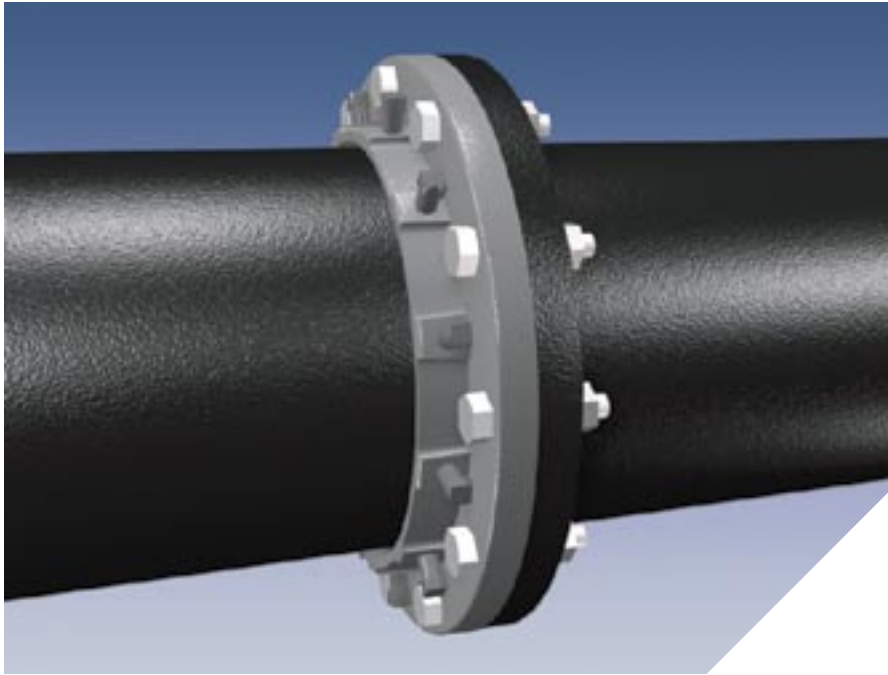


# SERIES 1000

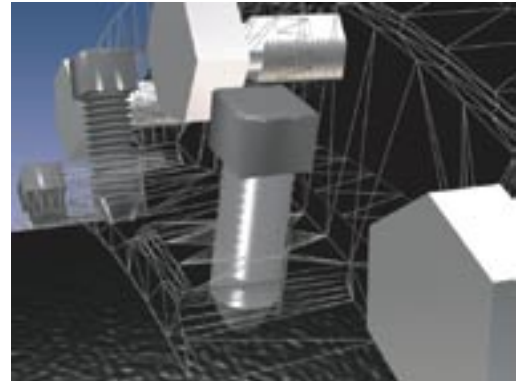
E-Z Flange  
Ductile Iron Flange Adapter



1012EZ on 12 pipe.

## Features and Application:

- For use on Ductile Iron Pipe at flanged joints.
- Minimum 2 to 1 Safety Factor.
- Set Screw design.
- Constructed of ASTM A536, 65-45-12 Ductile Iron.
- FM approved on all sizes.
- For use on water or wastewater pipelines subject to hydrostatic pressure and tested in accordance with either AWWA C600 or ASTM D2774.



Set Screw Design.

Nominal Pipe Size	Series Number	Approximate Shipping Weight	Pressure Ratings (PSI)
			Ductile Iron
3	1003	4.00	250
4	1004	6.30	250
6	1006	8.80	250
8	1008	12.99	250
10	1010	23.10	200
12	1012	29.50	200
14	1014	47.50	150
16	1016	73.60	150
18	1018	75.30	125
20	1020	87.00	100
24	1024	105.00	100

Note: For applications or pressures other than those shown, please contact EBAA for assistance.

Packaged items.

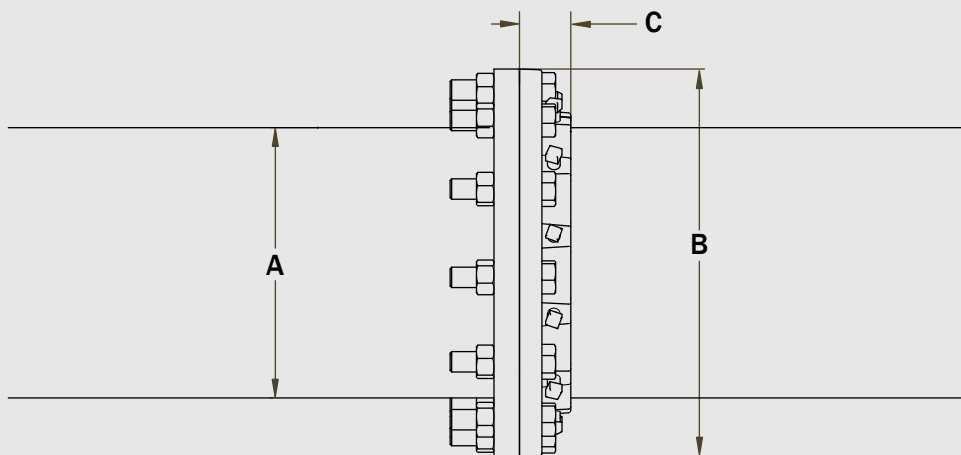


## Sample Specification

Flange adapters shall be used in lieu of threaded or welded flanges on plain end ductile and steel pipe. The restraints shall be manufactured of ductile iron conforming to ASTM A536. The bolt circles and bolt holes shall conform to ANSI/AWWA C110/A21.10. These flanged restraints shall have set screws manufactured from ductile iron. The screws shall have a Rockwell hardness of C40-45 converted from Brinnell. The flange adapter shall have a minimum working pressure rating as shown in the adjacent table. The restraint shall be the Series 1000 E-Z Flange as manufactured by EBAA Iron, Inc. or approved equal.

# Series 1000 Submittal Reference Drawing

**E  
B  
A  
A  
  
I  
R  
O  
N**

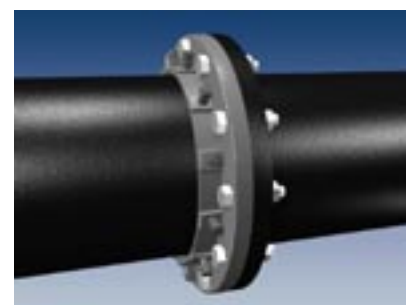
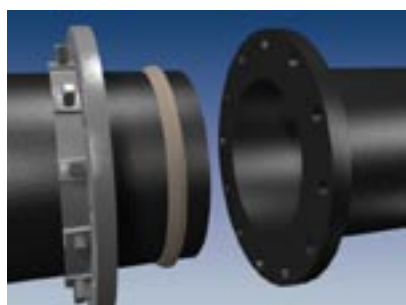


**M  
a  
d  
e  
  
i  
n  
  
U  
S  
A**

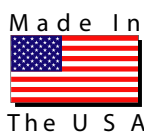
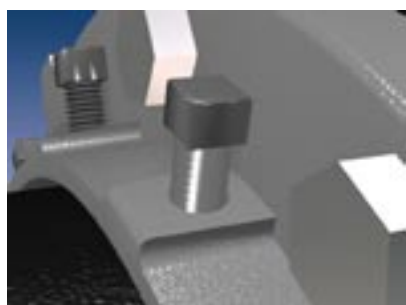
Nominal Pipe Size	Series Number	A Pipe O.D.	B Flange O.D.	C Flanged Adapter Length
3	1003	3.96	7.50	1.77
4	1004	4.8	9.00	1.96
6	1006	6.90	11.00	2.02
8	1008	9.05	13.50	2.39
10	1010	11.10	16.00	2.46
12	1012	13.20	19.00	2.52
14	1014	15.30	21.00	2.62
16	1016	17.40	23.50	3.71
18	1018	19.50	25.00	3.78
20	1020	21.60	27.50	3.68
24	1024	25.80	32.00	3.51

Note: Dimensions are in inches and are subject to change without notice.

## Installation Instructions



- The Series 1000 E-Z Flange is designed for joining plain end ductile iron pipe, conforming to ANSI/AWWA C151/A21.51 (class 50-56 thickness) to standard AWWA C110 (class 150 dimensions) flanges.
- The pipe ends must be cut smooth and square. (The E-Z Flange adapter should not be used on beveled end of the pipe). All surfaces must be cleaned. Back the set screws out of the flange to clear the pipe and slide onto the pipe. Install the E-Z Flange gasket on the pipe with the bevel of the gasket facing the E-Z Flange.
- Position the pipe end square against the adjacent flange. Slide the gasket and E-Z Flange toward the adjacent flange.
- Install and hand tighten the flange bolts keeping an equal gap around the flange.
- Tighten the flange bolts evenly to the proper range of torque. (45-60 ft-lbs for 3" and 4", 75-90 ft-lbs for 6" through 12", 100-120 ft-lbs for the 14" through 24")
- Tighten the set screws in a clockwise direction until all are in firm contact with the pipe surface. After all set screws are in firm contact with the pipe, continue tightening in an alternating manner until all are tightened to the proper range of torque. (45 ft-lbs for 3"-6" and 70 ft-lbs for 8" through 24")



**EBAA IRON Sales, Inc.**

P.O. Box 857, Eastland, TX 76448

Tel: (254) 629-1731

Fax: (254) 629-8931

(800) 433-1716 within US and Canada

ebaa@ebaa.com

www.ebaa.com