

# DAYTON

## SPECIFICATIONS

### Dayton® DXR Series Sink Models DXR2522, DXR3322 and DXR250R

#### GENERAL

Sink is formed of #18 gauge, 300 series, nickel-bearing stainless steel. Top mount.

#### DESIGN FEATURES

Bowl Depth: 8-1/8" (DXR250R), 8-3/16" (DXR2522, DXR3322).

Coved Corners: 3" vertical and 2-1/4" horizontal radius.

Faucet Deck: Raised 5/64" (DXR2522, DXR3322).

Finish: Exposed surfaces are polished to a satin finish.

Underside: Fully undercoated to prevent condensation and dampen sound.

#### OTHER

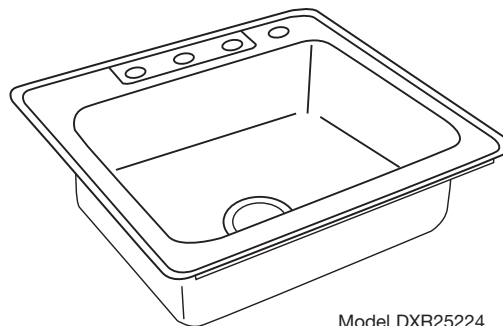
Drain Opening: 3-1/2".

Note: Unless otherwise specified, sink is furnished with 4 faucet holes as shown.

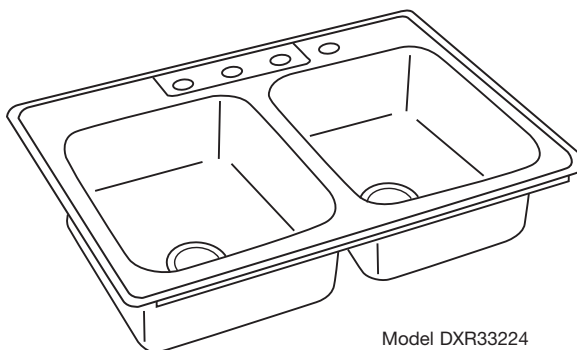
These sinks comply with ASME A112.19.3.



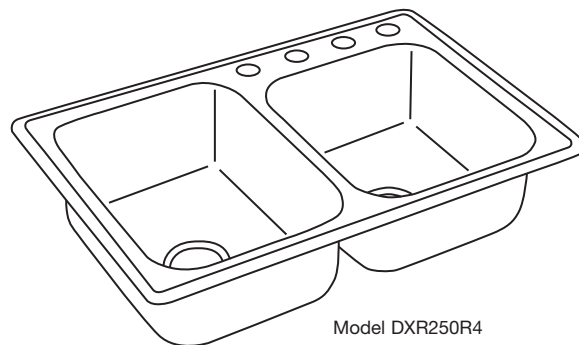
These sinks are listed by the International Association of Plumbing and Mechanical Officials as meeting the requirements of the Uniform Plumbing Code.



Model DXR25224

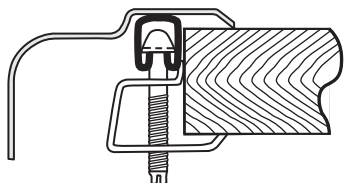


Model DXR33224

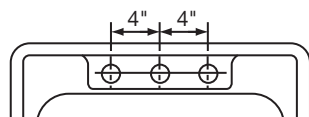


Model DXR250R4

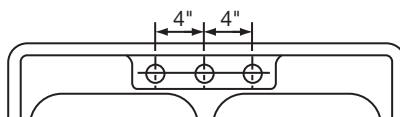
#### U-Channel Type Mounting System



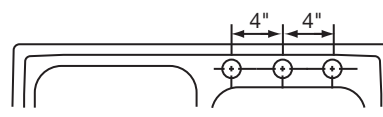
#### HOLE DRILLING CONFIGURATION



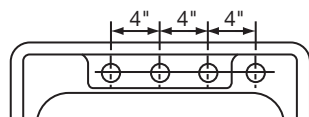
DXR25223



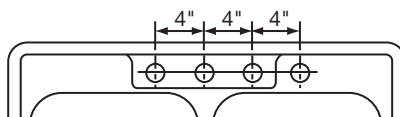
DXR33223



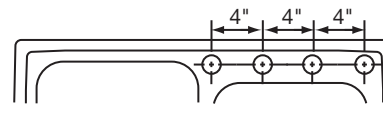
DXR250R3



DXR25224



DXR33224



DXR250R4

SEE OTHER SIDE FOR PRODUCT DIMENSIONS.

ALL DIMENSIONS IN INCHES, TO CONVERT TO MILLIMETERS MULTIPLY BY 25.4.

*In keeping with our policy of continuing product improvement, Elkay reserves the right to change product specifications without notice.*

*This specification describes an Elkay product with design, quality and functional benefits to the user. When making a comparison of other producers' offerings, be certain these features are not overlooked.*

**Elkay**

elkayusa.com

2222 Camden Court  
Oak Brook, IL 60523

Printed in U.S.A.  
©2008 Elkay

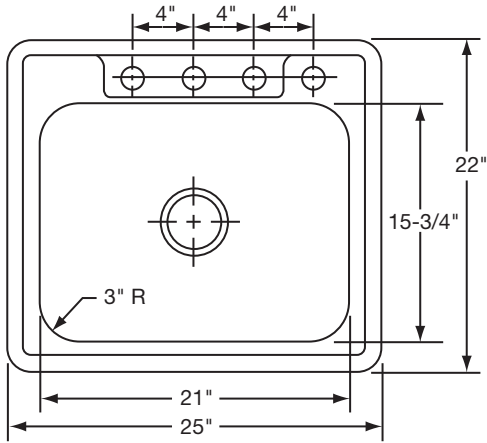
(Rev. 3/08) 2-34C

SINK DIMENSIONS (INCHES)\*

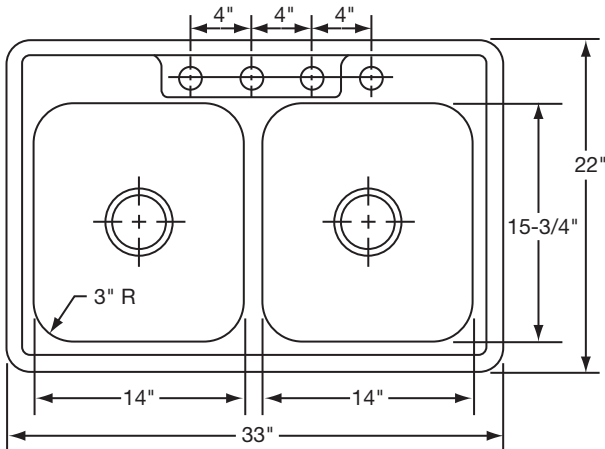
Model Number	Overall		Inside Each Bowl			Cutout in Countertop (1½" Radius Corners)		No. of 1½" Dia. Faucet Holes 4" Center	Minimum Cabinet Size
	L	W	L	W	D	L	W		
DXR2522	25	22	21	15¾	8⅜	24⅜	21⅜	3 or 4	30
DXR3322	33	22	14	15¾	8⅜	32⅜	21⅜	3 or 4	36

Model Number	Overall		Inside Left Bowl			Inside Right Bowl			Cutout in Countertop (1½" Radius Corners)	No. of 1½" Dia. Faucet Holes 4" Center	Minimum Cabinet Size
	L	W	L	W	D	L	W	D			
DXR250R	33	22	13½	18	8⅜	14	15¾	8⅜	32⅜	21⅜	36

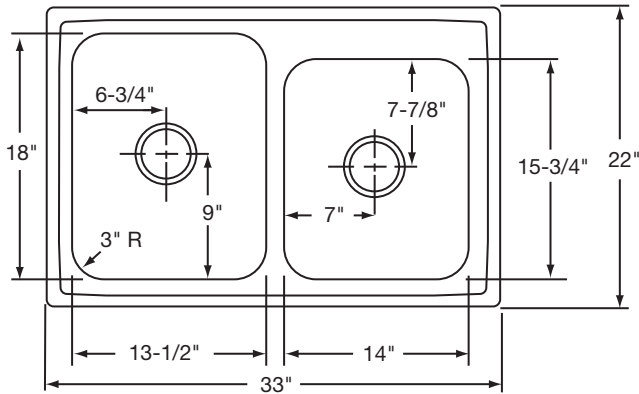
\*Length is left to right. Width is front to back.



Model DXR25224 Illustrated



Model DXR33224 Illustrated



Model DXR250R Illustrated