

DAYTON

SPECIFICATIONS

Dayton® Double Bowl Sink Models D, DJ, DD and DDJ Series

GENERAL

Sink is formed of #22 gauge, 300 series, nickel-bearing stainless steel. Top mount.

DESIGN FEATURES

Bowl Depth: See back.

Coved Corners: 3" vertical.

Faucet Deck: Raised (except D22519, D23317 and D23319 series).

Finish: Exposed surfaces are polished to a satin finish.

Underside: Undercoated on bottom of bowls.

OTHER

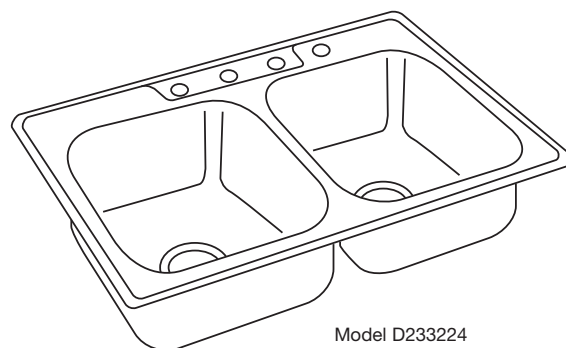
Drain Opening: 3-1/2".

Note: Unless otherwise specified, sink is furnished with 4 faucet holes as shown.

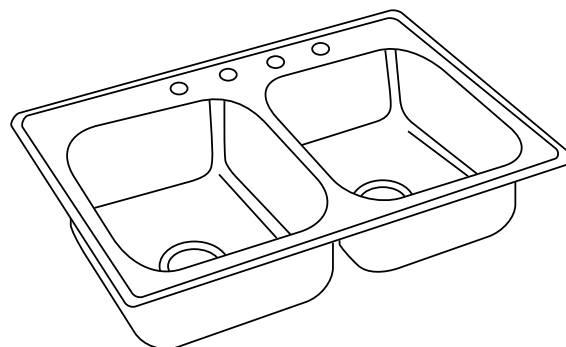
Select sinks comply with ASME A112.19.3 except Models DD23322 and DDJ 23322.



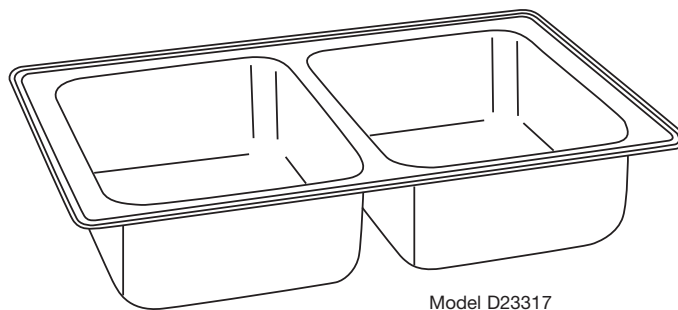
Select sinks except Models DD23322 and DDJ23322 are listed by the International Association of Plumbing and Mechanical Officials as meeting the requirements of the Uniform Plumbing Code.



Model D233224

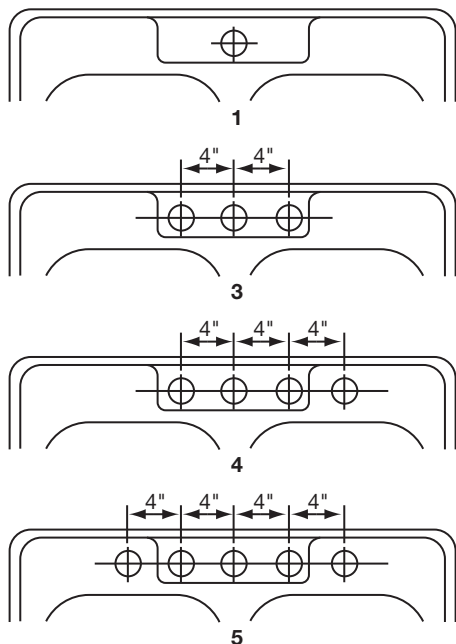


Model D233194

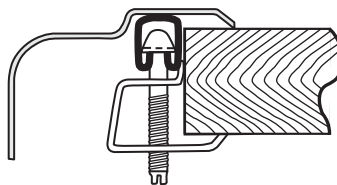


Model D23317

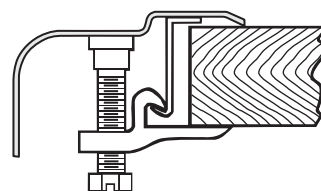
HOLE DRILLING CONFIGURATION



U-Channel Type Mounting System



J-Channel Type Mounting System



SEE OTHER SIDE FOR PRODUCT DIMENSIONS.

ALL DIMENSIONS IN INCHES, TO CONVERT TO MILLIMETERS MULTIPLY BY 25.4.

In keeping with our policy of continuing product improvement, Elkay reserves the right to change product specifications without notice.

This specification describes an Elkay product with design, quality and functional benefits to the user. When making a comparison of other producers' offerings, be certain these features are not overlooked.

Elkay

elkayusa.com

2222 Camden Court
Oak Brook, IL 60523

Printed in U.S.A.
©2008 Elkay

(Rev. 6/08) 2-14F

Dayton® Double Bowl Sink
Models D, DJ, DD and DDJ Series

DAYTON

SPECIFICATIONS

SINK DIMENSIONS (INCHES)*

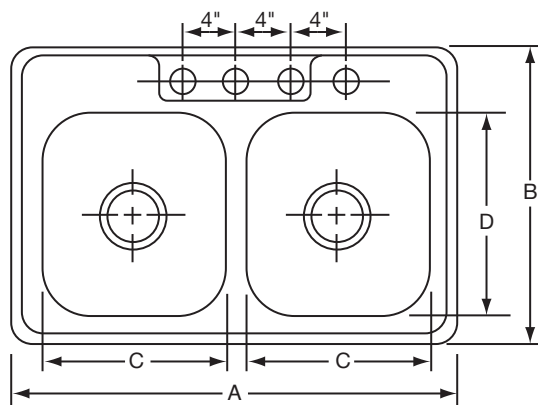
U-Channel Model Number	J-Channel Model Number	Master Pack	Overall		Inside Each Bowl			Cutout in Countertop (1½" Radius Corners)		No. of 1½" Dia. Faucet Holes	Minimum Cabinet Size	Comply with ASME A112.19.3 and UPC?
			L A	W B	L C	W D	D E	L	W			
D22519	—	1	25	19	10	14	6¼	24⅜	18⅜	1, 3 or 4	30	Yes
D23317	—	1	33	17	14	14	6	32⅜	16⅜	None	36	Yes
D23319	—	1	33	19	14	14	6⅞	32⅜	18⅜	1, 3 or 4	36	Yes
D23321	—	1	33	21¼	14	15¾	6½	32⅜	20⅝	3, 4 or 5	36	Yes
D23322	DJ23322	1	33	22	14	15¾	6½	32⅜	21⅜	3, 4 or 5	36	Yes
DD23322	DDJ23322	1	33	22	14	15¾	7⅞	32⅜	21⅜	1, 3 or 4	36	No
D623319	—	6	33	19	14	14	6⅞	32⅜	18⅜	1, 3 or 4	36	Yes
D623321	—	6	33	21¼	14	15¾	6½	32⅜	20⅝	3 or 4	36	Yes
D623322	DJ623322	6	33	22	14	15¾	6½	32⅜	21⅜	3, 4 or 5	36	Yes
D5023319	—	50	33	19	14	14	6⅞	32⅜	18⅜	3 or 4	36	Yes
D5023321	—	50	33	21¼	14	15¾	6½	32⅜	20⅝	3 or 4	36	Yes
D5023322	DJ5023322	50	33	22	14	15¾	6½	32⅜	21⅜	3 or 4	36	Yes

*Length is left to right. Width is front to back.

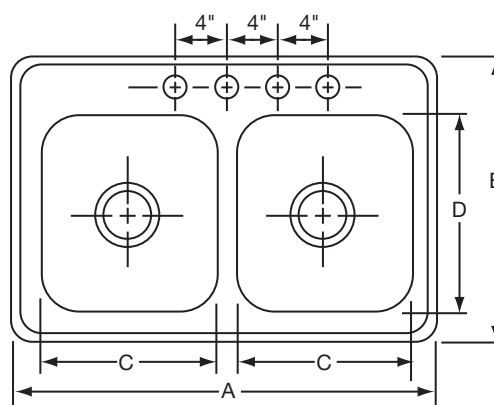
D-Prefix sinks are packed one per shipping carton.

D6-Prefix sinks are nested 6 units per shipping carton.

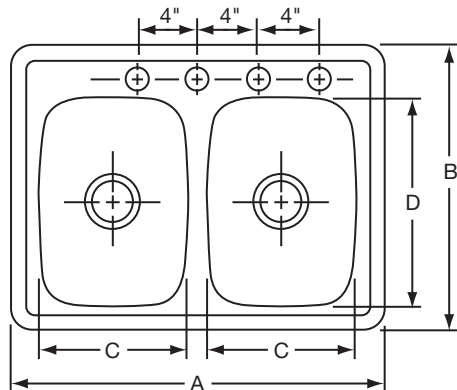
D50-Prefix sinks are nested 50 units per shipping carton.



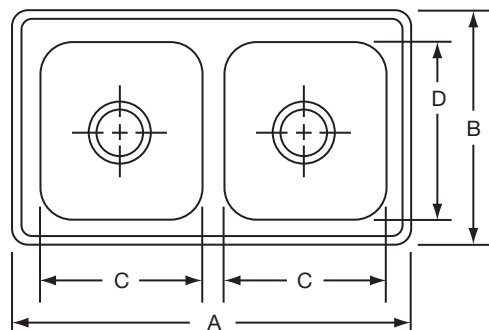
Bowl Depth is E
 Model D233224 Illustrated



Bowl Depth is E
 Model D233194 Illustrated



Bowl Depth is E
 Model D225194 Illustrated



E is Bowl Depth
 Model D23317 Illustrated