



## SERIES 40-300-M

### SPECIFICATIONS

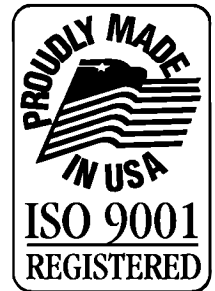
#### GENERAL SPECIFICATIONS

The Conbraco meter setter, 40-300-M series is designed to adapt existing water meter installations to include a dual check backflow preventer. This is accomplished without the expense of modifying existing piping or replacing the existing meter box. The standard configuration provides for the 300 series dual check to be installed on the outlet side of the water meter at a 45° angle which makes it easily accessible for testing and repair. The meter setter will accept a standard 5/8" or 5/8" x 3/4" water meter, 7 1/2" face to face. The meter setter shall be constructed of an 85-5-5-5 cast bronze body with a boss to accept other components such as a pressure relief valve, cast bronze union nuts drilled to accept sealing wire for tamper-proofing, heavy wall copper tubing bends and lead-free solder joints.

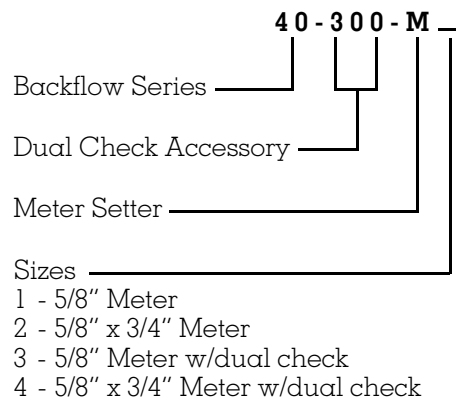
### FEATURES

- Maximum Working Pressure 175 PSI
- Operating Temperature Range 33-180° F
- Cast Bronze (85-5-5-5) body
- Bronze union nuts
- Heavy wall copper tubing bends
- Lead-free solder joints
- Low Head Loss
- Easy Installaion

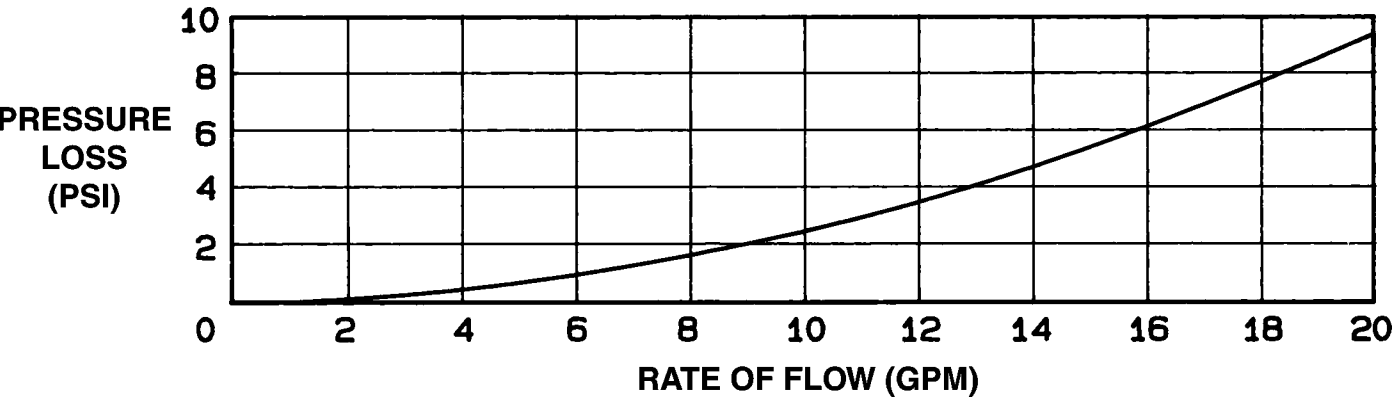
### Meter Setter



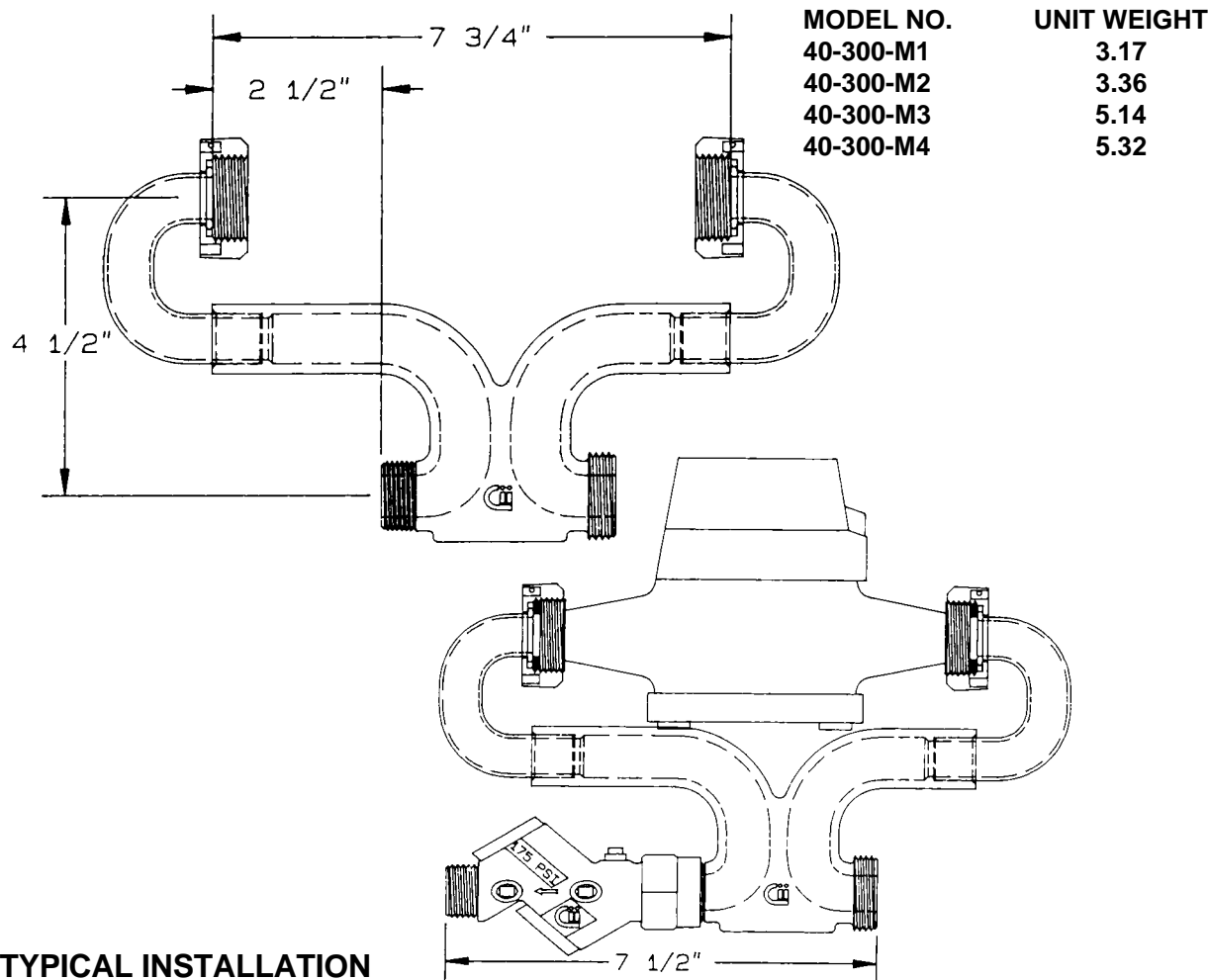
### ORDERING NUMBER



# FLOW CURVE



# DIMENSIONS (in.) – WEIGHTS (lbs.)



## BACKFLOW PRODUCTS DIVISION

Conbraco Industries, Inc. P.O. Box 247 Matthews, N.C. 28106 USA (704) 841-6000 FAX (704) 841-6020