



SPECIFICATIONS

GENERAL SPECIFICATIONS

The backflow preventer shall be a Double Check Detector Assembly consisting of two (2) independently acting, spring loaded check valves with inlet and outlet resilient-seated gate valves and a by-pass assembly. The by-pass assembly consists of a water meter and an approved double check valve assembly with shut-off valves and test cocks.

The backflow preventer shall be suitable for **supply pressure up to 175 psig and water temperatures from 33 to 140°F.**

The backflow preventer shall be designed to meet the requirements of the following standards: **ASSE 1048, UL and FM.**

CONBRACO SPECIFICATIONS

The Double Check Detector Assembly shall prevent backflow from a cross-connection of non-potable (non-hazardous) water into the safe drinking water system; and at the same time, it shall detect leakage or unauthorized use of water downstream of the assembly.

The **mainline** unit shall consist of two (2) independent, spring loaded, swing type check valve modules set in an epoxy-coated (FDA approved) ductile iron body with inlet and outlet resilient-seated gate valves, and four (4) test cocks. The seat of each check valve shall be replaceable. The loading of each swing check assembly shall be accomplished by a stainless steel compression spring retained in a thermoplastic holder and self contained as an assembly. The cover shall serve to secure the check assembly and as an access for easy repair and maintenance without removing the assembly from the line. Check assemblies and covers shall be interchangeable.

The **by-pass** assembly shall consist of a water meter, an approved double check valve (DC) assembly with (2) shut-off ball valves and four (4) test cocks. The by-pass DC shall have replaceable modular check valve inserts.

All parts of the Double Check Detector Assembly shall be made of corrosion resistant materials.

The backflow preventer shall be suitable for **supply pressure up to 175 psig and water temperatures from 33 to 140°F.**

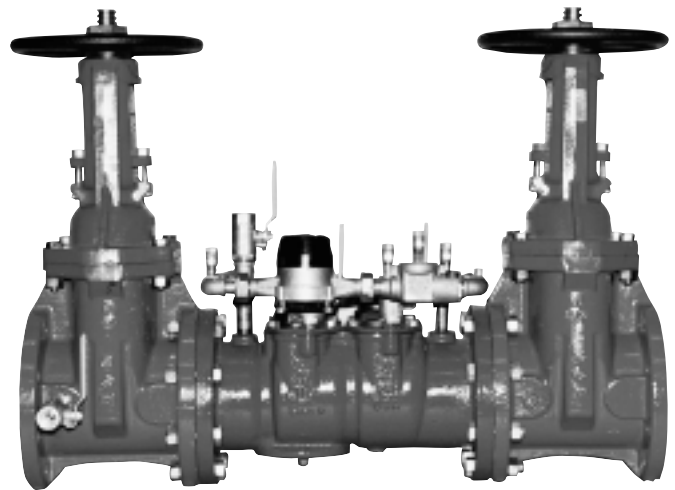
The assembly shall be designed to meet the requirements of the following standards: **ASSE 1048, UL and FM.**

The manufacturing facility shall be **ISO 9001 REGISTERED.**

The backflow preventer shall be manufactured by **CONBRACO INDUSTRIES, INC.**, Matthews, North Carolina.

Double Check Detector Assembly

Sizes 2-1/2" – 3" – 4" – 6"



FEATURES

- U.S. Patent #5,711,341
- Corrosion resistant
- Replaceable discs
- Low head loss
- Economical
- Short lay length
- Light weight
- Designed for easy maintenance
- Check valve assemblies interchangeable
- Maximum working pressure 175 PSI
- Operating temperature range 33-140°F

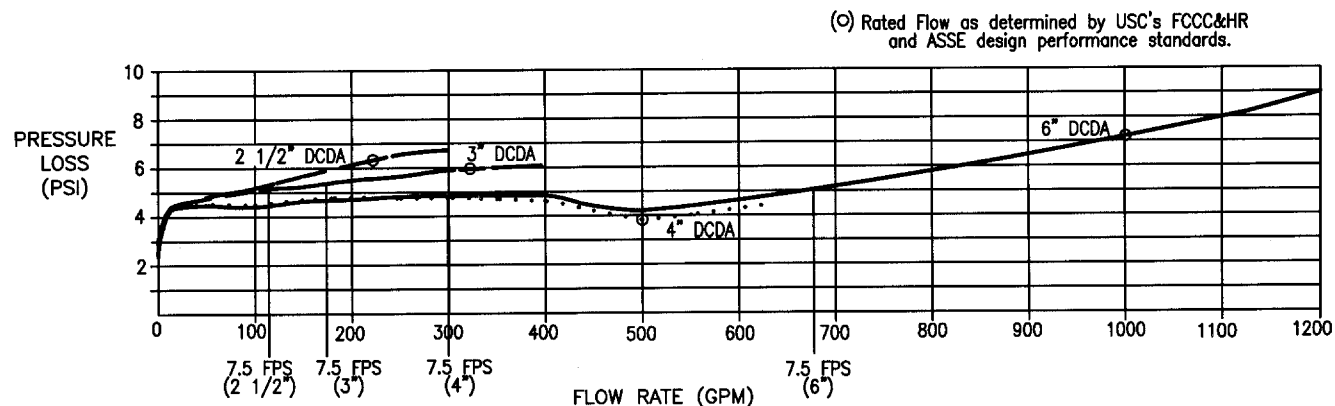


The Series DCDA is designed to comply with ASSE 1048, UL Classified and FM.



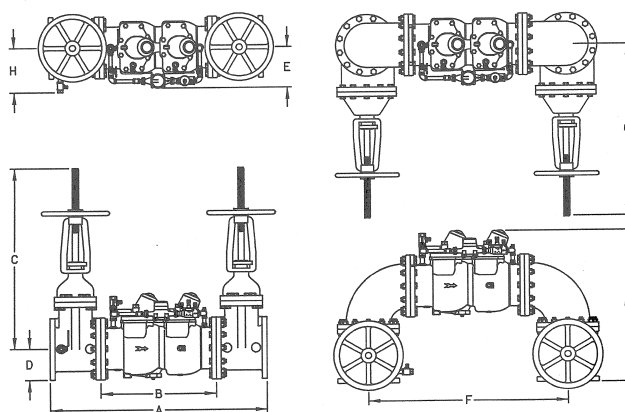
UL and FM approved backflow preventers must include OS&Y gate valves.

FLOW CURVES



DIMENSIONS (in.) – WEIGHTS (lbs.)

Size	2-1/2"	3"	4"	6"
A	32 1/8	33 1/8	35 1/8	39 1/8
B	17	17	17	18
C (OS&Y OPEN)	16 3/8	19	23 1/4	30 1/8
D	3 1/2	3 3/4	4 1/4	5 1/2
E	9	9	9	9
F	27 1/8	28 1/8	30 1/8	34 1/8
G	22	23	25	29
Test Cocks (mainline)	1/2 NPT	1/2 NPT	1/2 NPT	3/4 NPT
Test Cocks (by-pass)	1/4 NPT	1/4 NPT	1/4 NPT	1/4 NPT
Net. Wt. (Less Gate Valves)	70	75	83	92
Net. Wt. (w/OS&Y Valves)	176	206	278	404
Net. Wt. (w/Elbows & OS&Y Valves)	212	257	362	539
Net. Wt. (w/Post Indicator)	200	226	293	416
Shpg. Wt. (Less Gate Valves)	123	128	136	145
Shpg. Wt. (w/OS&Y Valves)	243	273	350	514
Shpg. Wt. (w/Elbows & OS&Y Vlbs)	279	324	434	649
Shpg. Wt. (w/Post Indicator)	267	293	365	526



MATERIALS

Body & Covers	Epoxy coated (FDA approved) Ductile iron (mainline) Bronze (by-pass)
Springs	Stainless steel
Seats	Thermoplastic
Seat Discs	EPDM
Fasteners	Stainless steel

ORDERING NUMBERS

4S-60X-XXX	
9 - 2 1/2"	U - U Flow
9 - 3"	1 - Less Gate Valves
A - 4"	3 - With OS&Y Gate Valves
C - 6"	6 - With Post Indicator
C - Cubic Feet	7 - With Flanged Inlet x Grooved Outlet
E - Gallons	8 - With Grooved x Grooved OS&Y gate valves
G - Less meter	

BACKFLOW PRODUCTS DIVISION

Conbraco Industries, Inc. P.O. Box 247 Matthews, N.C. 28106 (704) 841-6000 FAX (704) 841-6020-USA-

PRINTED IN USA
BFSSDCDA

COPYRIGHT © 2002 CONBRACO INDUSTRIES, INC

www.conbraco.com