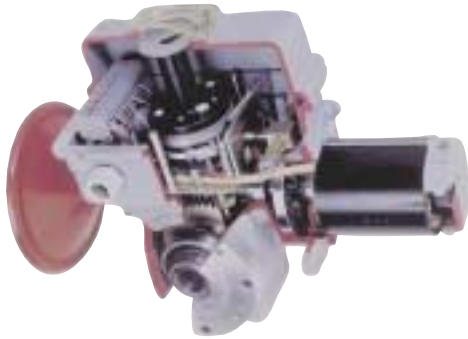


LB Series Electric Actuators



The LB-Series is available in several basic designs with a wide variety of configurations from which to select torque and speeds to meet specific application requirements. These rugged and uncomplicated actuators provide a practical and reliable method for turning any mechanism 90°. Torques range from 540 inch-pounds to 54,000 inch-pounds (6.25 to 625 kilogram-metres). Electrical models are available in 115 VAC-50/60 Hz single phase, 200 VAC-50/60 single phase; and 220/440 VAC-50/60 Hz three phase. Models are available for on/off modulating control.

Listed below are performance specifications for a limited sampling of LB-Series electric actuators. This product family is available with a such a variety of options and features that they can not be represented in this catalog. Options such as positioners, transmitters, special enclosure ratings, extra switches, or motor voltages are optionally available. Contact Conbraco's Actuator Engineering Department for the proper actuator to fit non standard or unique requirements.

LB Series Electric Actuator Performance Data							
L-B Series	Torque	Rotating		Power Requirements 30% Duty Cycle			
Model	Output	Speed (Sec/90°)		115VAC 1 Ph 60Hz460 VAC 3 Ph 60 HZ			
Number	Lb-In	Std	Opt	RATED	START	RATED	START
OA6	530	5		1.95	3.3	0.39	0.78
OA8	720	5		1.95	3.3	0.63	1.15
OA8	720	25	50	1.25	2	0.39	0.78
OA15	1,350	15	25	1.95	3.3	0.39	0.78
AT18	1,600	4		4.6	12	0.45	1.8
AT25	2,250		4	6.2	8	0.9	2
AT25	2,250	15		1.95	3.3	0.63	1.15
ATP25	2,250	25	50	1.95	3.3	0.39	0.78
AT50	4,500	25	50	4.6	12	0.63	1.15
AT80	7,000	25	50	6.2	8	0.63	1.15
BT50	4,500	8,1Ph	6,3Ph	5	7.5	0.85	2.6
BT50	4,500	16,1Ph	12,3Ph	4.6	12	0.63	1.15
BT100	9,000		25	6.2	8	0.63	1.15
BT	9,000	50		4.6	12	0.63	1.15
BT100	9,000		100	4.6	12	0.63	1.15

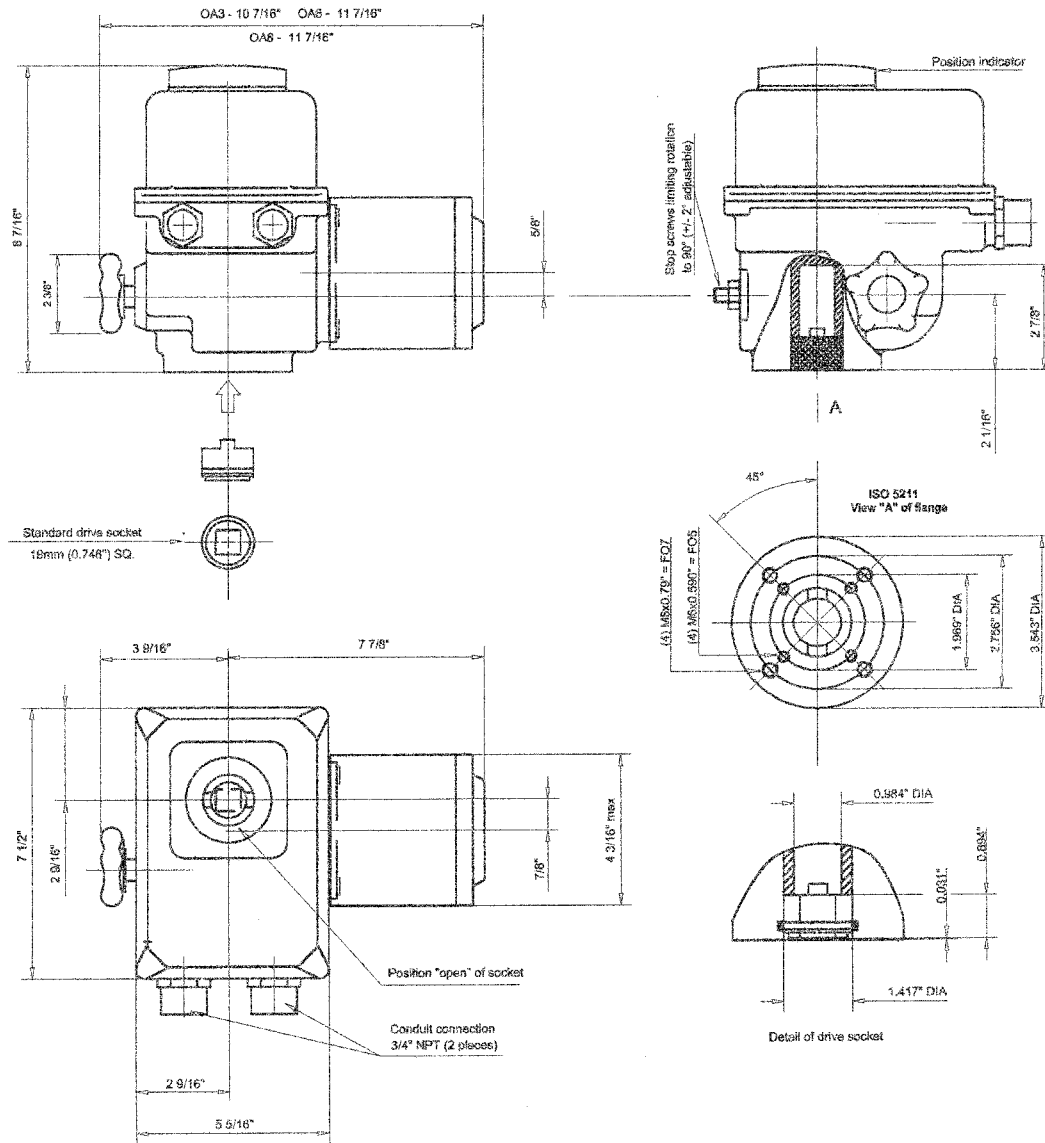
NOTES:

- Operating speed is based on an actuator operating at rated output torque. Actual operating speed will vary depending on actual output torque.
- All torque and speed ratings are based on a plus or minus 10% motor voltage variation.
- All torque ratings represent the maximum torque available during both breakaway (start) and run (dynamic) conditions.
- Each actuator is supplied, as standard, with a 30% duty cycle except for model Z3 which has a 20% duty cycle-10 minute operation, F insulation, TENV design motor rated for 360 starts per hour at 104°F.
- All actuators are NEMA 4 rated as standard. Many are optionally available with additional ratings, such as, explosion proof or submersible, etc., to meet special service requirements.
- All actuators utilize a self-locking gear train design and have provision for manual override.
- All actuators have both electrical and mechanical travel stop provisions.
- **FQ Series are Spring Return Failsafe models. Contact factory for model number and price.**

LB Series Electric Actuators

Types OA3, OA6 and OA8

Standard specification: Weatherproof to NEMA 4, fitted with two adjustable SPDT travel limit switches (one for each extreme position); without torque limiting device and with handwheel for manual operation. Includes built-in motor thermal cutouts. Duty rating 30%.



Female socket dimension = .748 square

Net Weight

OA3 - 12 lbs

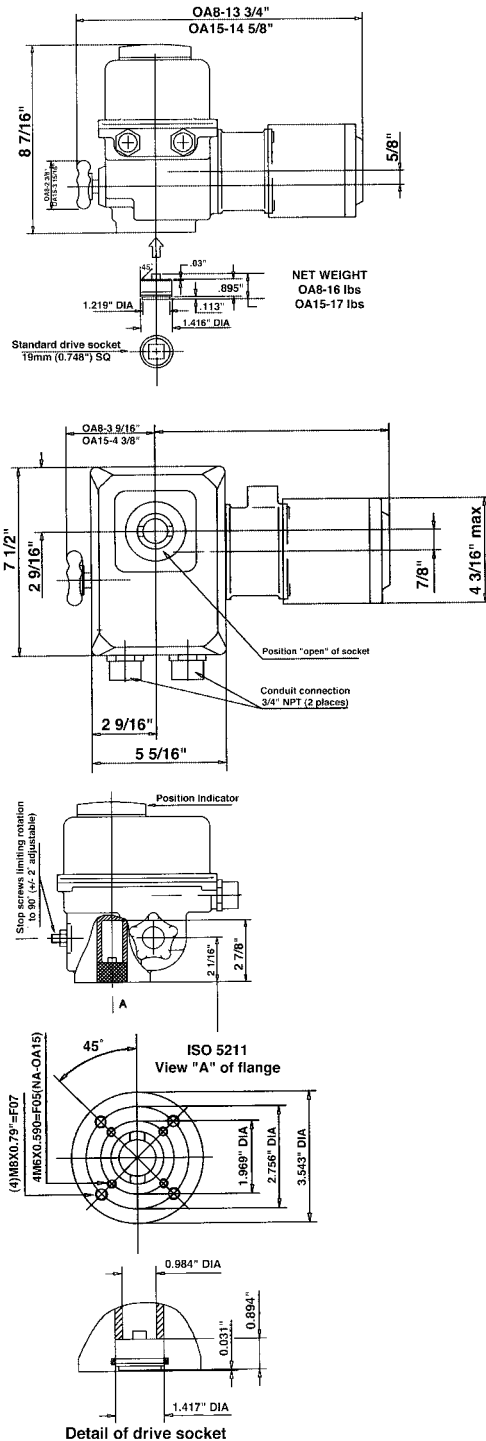
OA6 - 13 lbs

OA8 - 15 lbs

LB Series Dimensions

Types OA8 and OA15

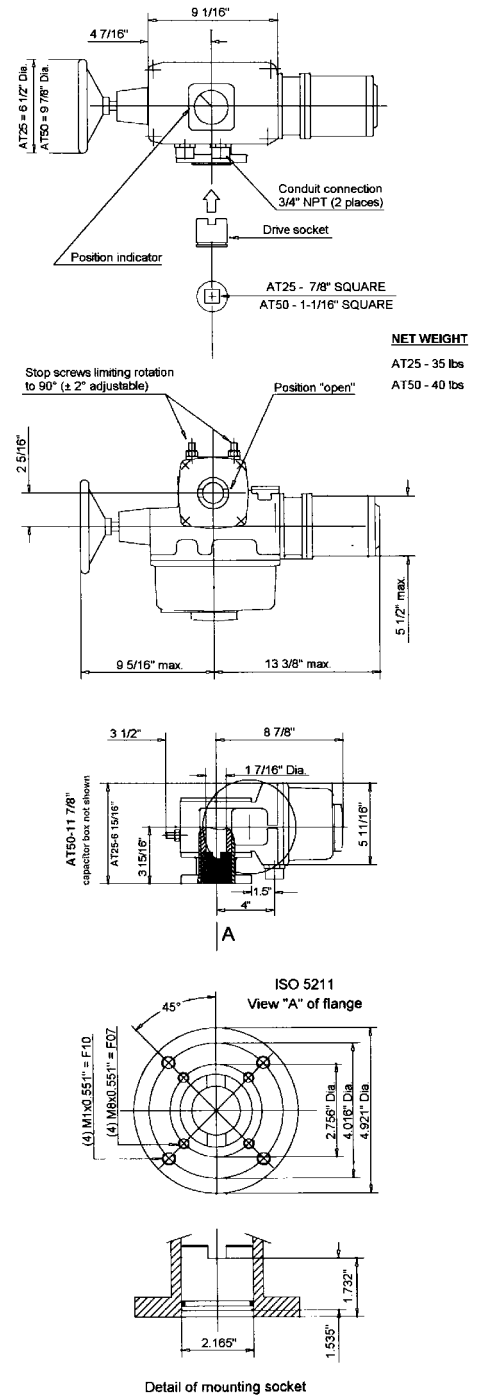
Standard specification: Weatherproof NEMA 4, with two adjustable SPDT limit switches; with built-in motor thermal cutouts, with handwheel for manual operation. Duty rating 30%.



Female socket dimension = .748 square

Types AT25 and AT50

Standard specification: Weatherproof to NEMA 4, fitted with two adjustable SPDT travel limit switches (one for each extreme position); two SPDT torque limit switches (one for each direction of rotation) and with handwheel for manual operation. Duty rating 30%. Net weight: 40 lbs.

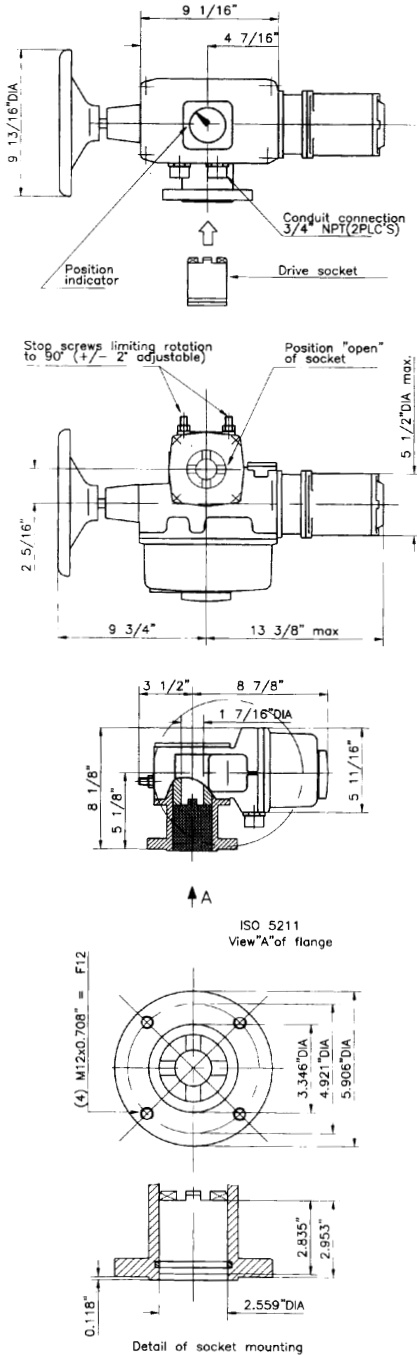


AT25 female socket dimension = .866 square
AT50 female socket dimension = 1.063 square

LB Series Dimensions

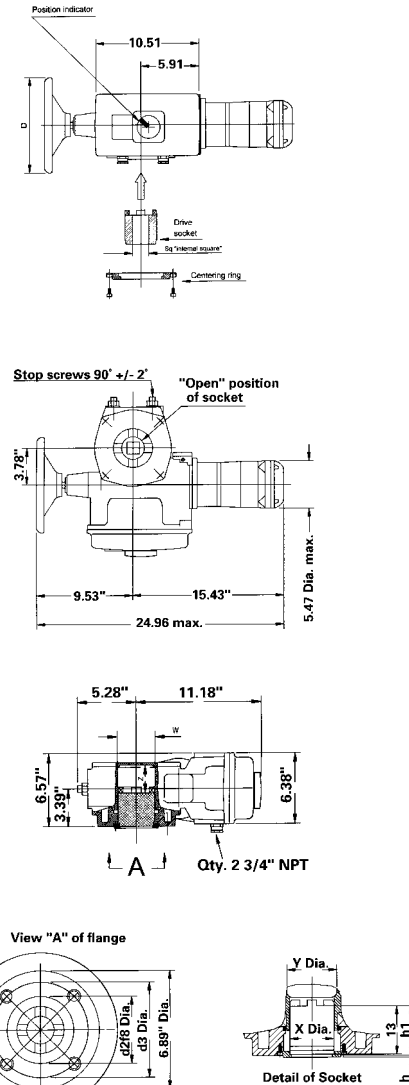
Type AT80

Standard specification: Weatherproof to NEMA 4, fitted with two adjustable SPDT travel limit switches (one for each extreme position); two SPDT torque limit switches (one for each direction of rotation) and with handwheel for manual operation. Duty rating 30%. Net weight: 44 lbs.



Types BT50, BT100, and BT150

Standard specification: Weatherproof to NEMA 4, fitted with two adjustable SPDT travel limit switches (one for each extreme position); two SPDT torque limit switches (one for each direction of rotation) and with handwheel for manual operation. Duty rating 30%.



Type	D	W	X	Y	Z	I3	h1
BT50	6.5	2.64	2.56	1.58	2.6	2.84	2.91
BT100	9.84	3.35	3.23	2.36	2.52	2.99	3.01
BT150	9.84	3.35	3.23	2.36	2.52	2.99	3.01
Type	h	d3	d2f8	d4	h2	Sq.	Weight
BT50	0.12	4.92	3.35	M12	0.59	1.063	60 lbs.
BT100	0.16	5.51	3.94	M16	0.79	1.417	60 lbs.
BT150	0.16	5.51	3.94	M16	0.79	1.417	64 lbs.

Female socket dimension = 1.063 square