



— MODEL — **X117D**

# Valve Position Transmitter



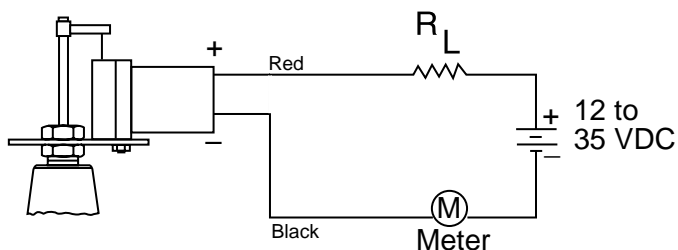
- **Accurately Monitors Valve Position**
- **Environmentally Sealed to IP-68**
- **Featured on Electronic Control Valves**
- **Easy Field Adjustments**
- **Compact and Rugged Construction**

The Cla-Val Model X117D Valve Position Transmitter is an accurate monitor of valve position. Through an industry standard 4-20 mA output, the X117D delivers the accuracy required for computer-guided control valve systems (SCADA type). The electronic components are enclosed in a rugged, sealed aluminum and stainless steel housing. The assembly is mounted externally on the cover of a Cla-Val main valve. An extension of the valve stem projects outside of the cover at the center boss and is mechanically linked to the electronic components with an extensible wire rope. As the valve stem rises and lowers, the X117D provides an output signal in direct proportion to the valves position. An internal spring maintains constant tension on the wire rope for virtually no hysteresis error throughout valve stroke.

## Wiring Diagram

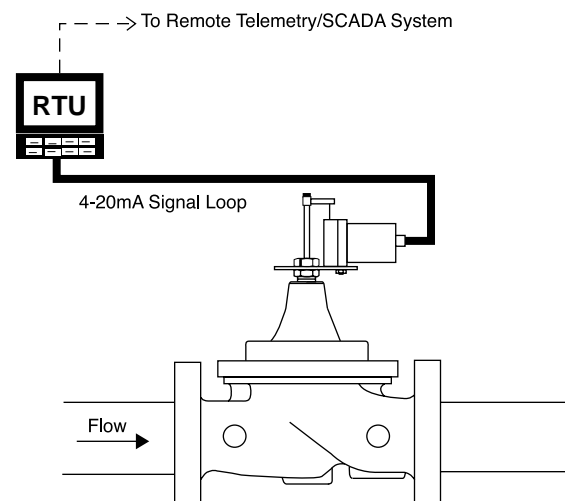
The signal from the position sensing mechanism wire rope is converted to a two-wire 4 to 20 mA current output. The voltage compliance range is 14 to 35 VDC. The required, but not supplied, maximum load resistance can be calculated using the following formula:

$$R_L \text{ Max.} = \frac{V_{\text{supply}} - 12.5}{.020}$$

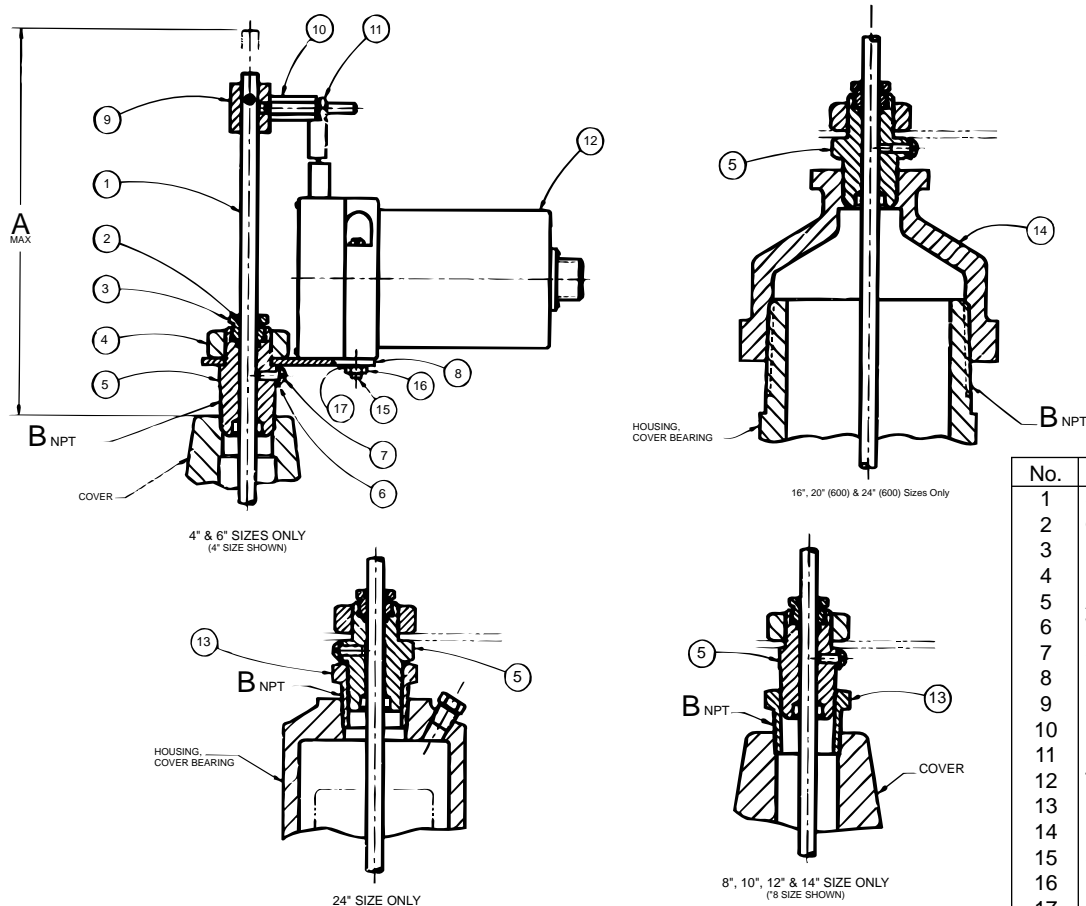


## Typical Installation

The X117D Valve Position Transmitter can be used to transmit valve position to the optional 131VC-3 Electronic Valve Controller.



## Dimensions



## Dimensions (In Inches)

VALVE SIZE	4"	6"	8"	10"	12"	14"	16"	20"	24"
A (MAX.)	10.00	10.00	10.42	10.75	11.44	12.75	12.75	12.75	14.75
B NPT	.75	.75	1.00	1.00	1.25	1.50	2.00	2.00	1.00

## Specifications

### Fits Valve Sizes

4" thru 24"

### Pressure Rating

400 psi Max.

### Temperature

-13° to 180° F

### Materials

Cast aluminum and stainless steel housing  
Steel bracket  
Brass adapter  
Stainless steel stem  
Buna-N® synthetic rubber seals  
Other materials available as extra cost option

### Electrical

Housing, weather sealed NEMA 6 (IP-68)

### Output Current: 4-20 mA

### Adjustment Range

At 4mA 0 to 30% of Range  
At 20mA 80% to 100% of Range

### Insulation

100 Meg Ohms min. at 100 VDC

### Repeatability ± 0.015% Full Scale

Protection for reversed polarity

### Wiring

Red wire for positive  
Black wire for negative

## When Ordering, Please Specify

- For New Valves – At time of order specify:  
"with X117D Installed".
- For Retrofitting existing valves give all nameplate data of valve to which X117D will be installed.



E-X117D (R-11/01)

## CLA-VAL

PO Box 1325 Newport Beach CA 92659-0325  
Phone: 949-722-4800 • Fax: 949-548-5441

### CLA-VAL CANADA, LTD.

4687 Christie Drive  
Beamsville, Ontario  
Canada LOR 1B4  
Phone: 905-563-4963  
Fax: 905-563-4040

©COPYRIGHT CLA-VAL 2001 Printed in USA  
Specifications subject to change without notice.

### CLA-VAL SA

Chemin des Mesanges 1  
CH-1032 Romanel/  
Lausanne, Switzerland  
Phone: 41-21-643-15-55  
Fax: 41-21-643-15-50

[www.cla-val.com](http://www.cla-val.com)

Represented By: